



ADA Compliant

This Space for Architect/Engineer Approval

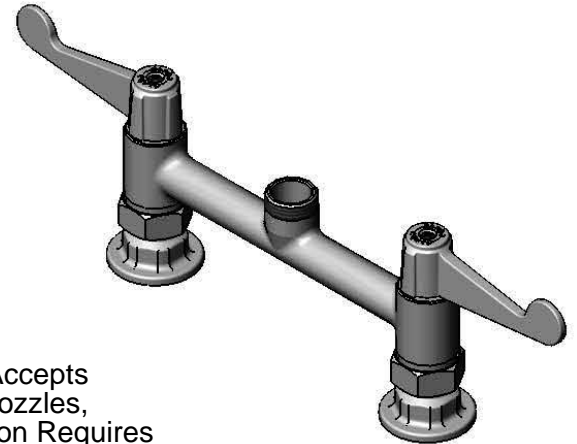
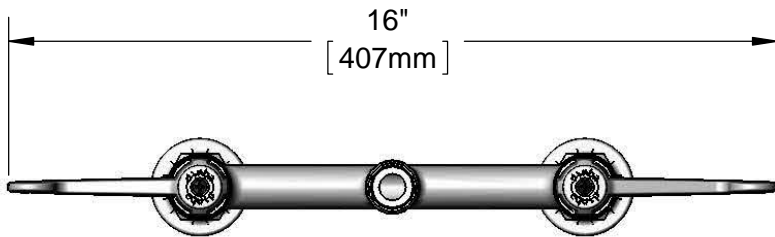
Job Name _____ Date _____

Model Specified _____ Quantity _____

Customer/Wholesaler _____

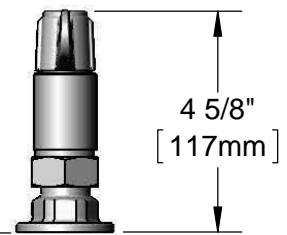
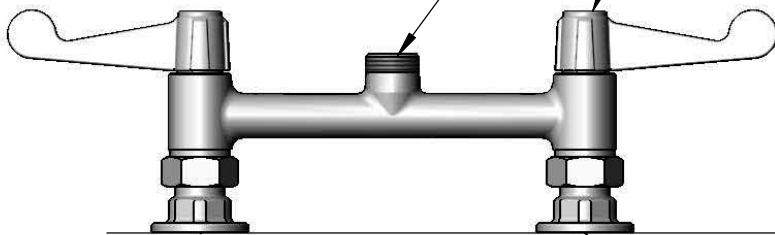
Contractor _____

Architect/Engineer _____



Swivel Outlet Accepts Equip Swing Nozzles, Rigid Conversion Requires 014200-45 Lock Washer (Sold Separately)

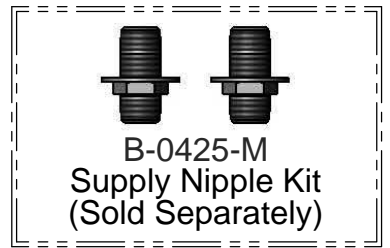
Ceramic Cartridges & equip 4" Wrist Action Handles w/ Color Coded Screws



Mounting Surface

8" [203mm]
Adjustable From 7 3/4" to 8 1/4" [197mm to 210mm]

00AA
Ø 2" [51mm]
Flanges w/ 1/2" NPT Female Inlets



Model Number
5F-8DWX00

Date
05/29/12

Scale
1:4

Drawn
DMH

Checked
KJG

Approved
JHB

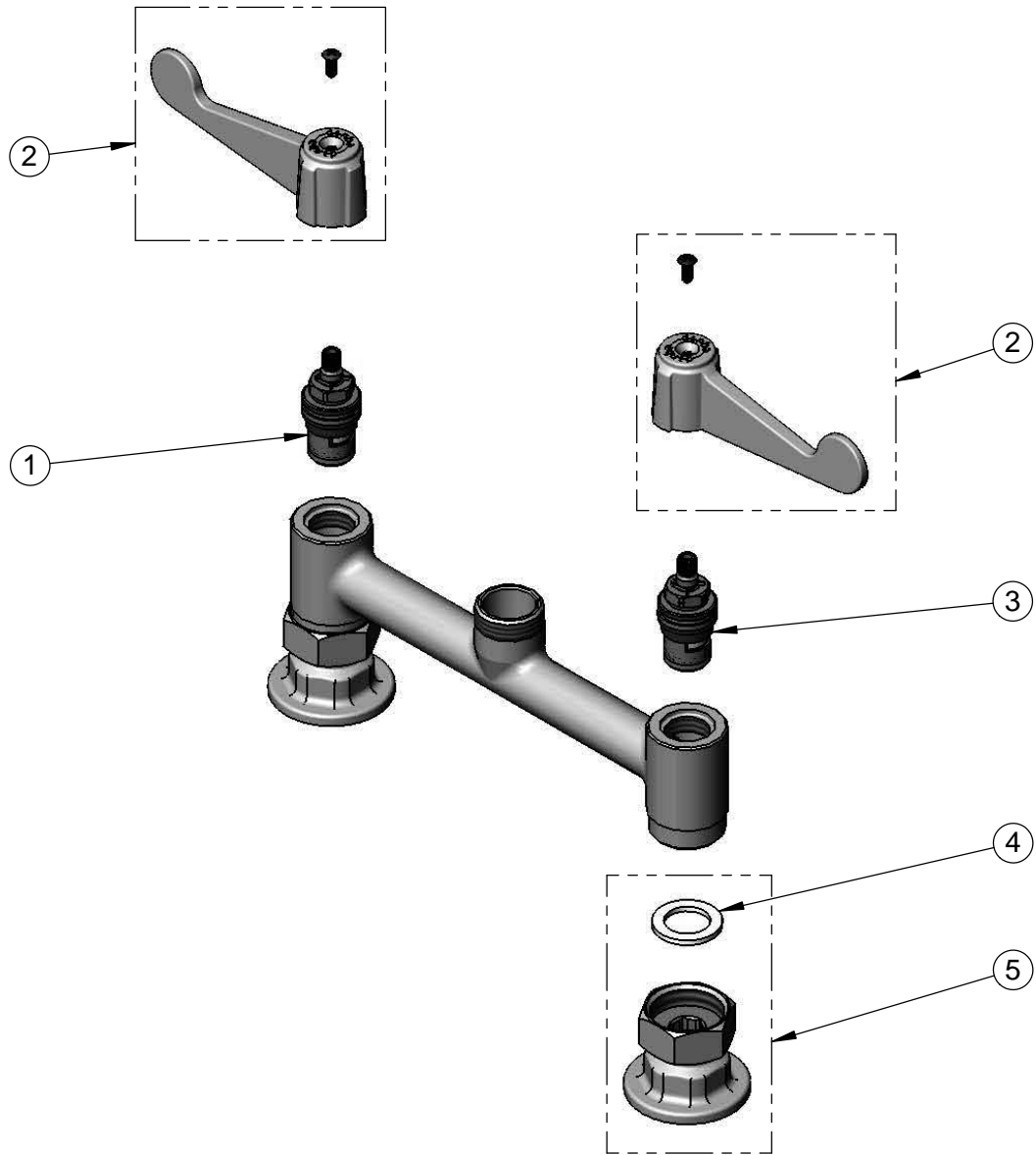
Product Specifications:

8" Deck Mount Mixing Faucet Less Swivel Gooseneck w/ equip 4" Wrist Action Handles & 1/2" NPT Supply Nipple Kits



equip Foodservice Accessories
2 Saddleback Cove, P.O. Box 1088
Travelers Rest, South Carolina 29690
Phone: 800.891.4808 Fax: 800.868.0084

ITEM NO.	SALES NO.	DESCRIPTION
1	013787-45	Ceramic Cartridge, RTC
2	5-HDL-W	"equip" 4" Wrist Action Handle (includes Blue & Red Screws)
3	013788-45	Ceramic Cartridge, LTC
4	001019-45	Coupling Nut Washer
5	00AA	1/2" NPT Inlet Flange



Model Number 5F-8DWX00	Date 05/29/12	Scale NTS	Drawn DMH	Checked KJG	Approved JHB
---------------------------	------------------	--------------	--------------	----------------	-----------------



Product Specifications:
8" Deck Mount Mixing Faucet Less Swivel Gooseneck
w/ equip 4" Wrist Action Handles & 1/2" NPT Supply Nipple Kits

equip Foodservice Accessories
2 Saddleback Cove, P.O. Box 1088
Travelers Rest, South Carolina 29690
Phone: 800.891.4808 Fax: 800.868.0084