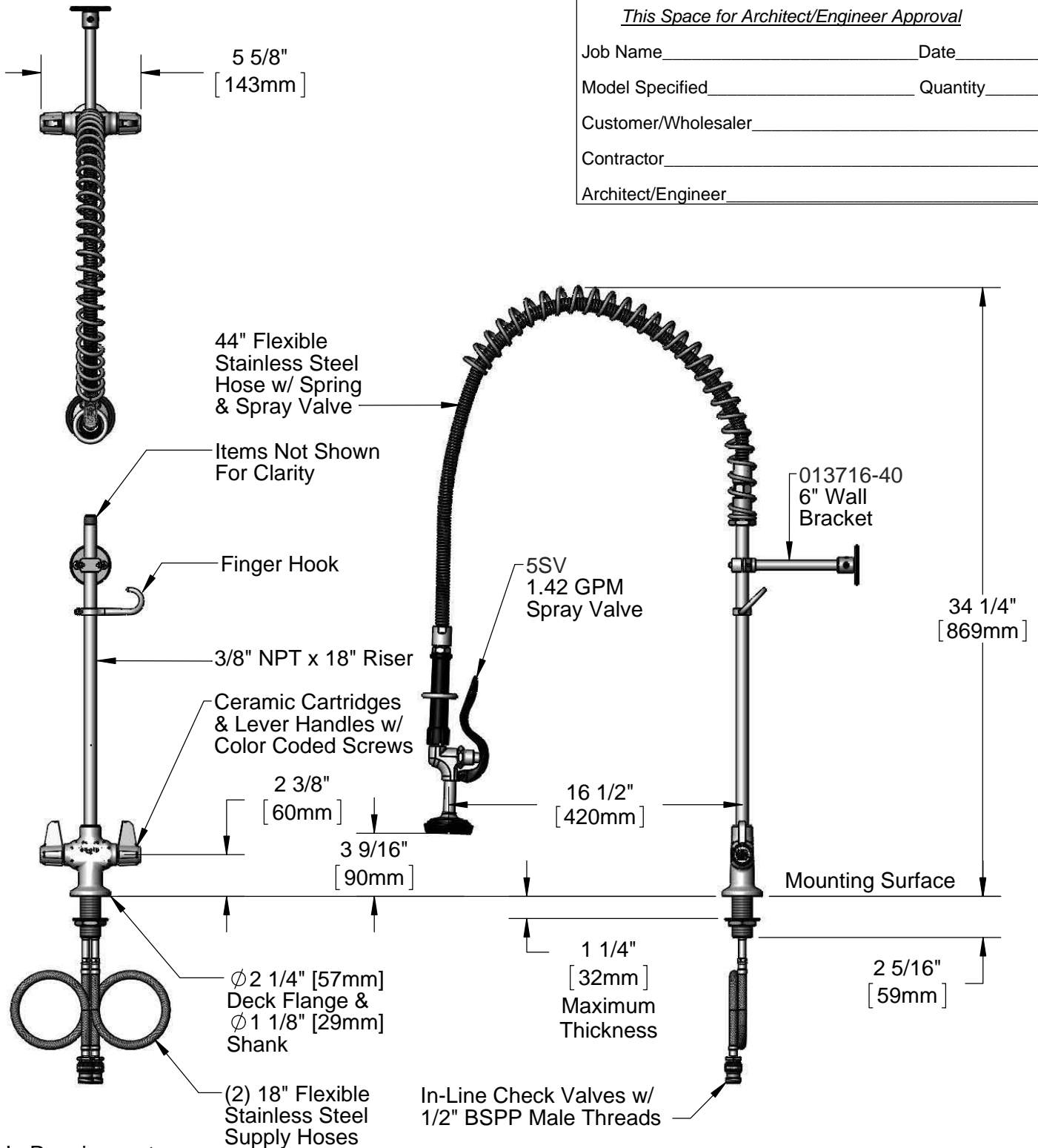


This Space for Architect/Engineer Approval

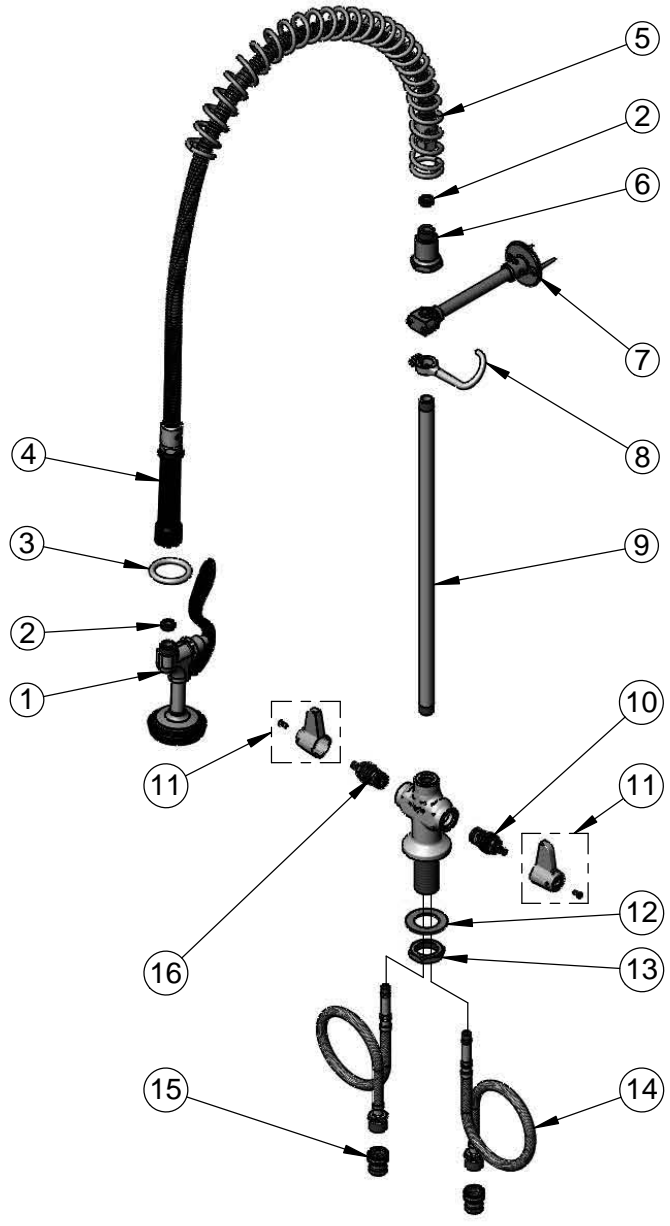
Job Name _____ Date _____
 Model Specified _____ Quantity _____
 Customer/Wholesaler _____
 Contractor _____
 Architect/Engineer _____



Rough-In Requirement:
 $\phi 1 \frac{1}{2}$ " [$\phi 38$ mm] Mounting Hole

| | |
|--|---|
| Model Number <h2 style="text-align: center;">5PR-2S00</h2> | Product Specifications: Pre-Rinse Unit: Single Hole Deck Mount Mixing Faucet, Ceramic Cartridges, Lever Handles, 44" Flexible Stainless Steel Hose, 1.42 GPM Spray Valve, 1/2" BSPP In-Line Check Valves, 6" Wall Bracket & (2) 18" Flexible Supply Hoses |
| Product Compliance: ASME A112.18.1 / CSA B125.1 NSF 61 - Section 9 NSF 372 (Low Lead Content) EPA Act 2005 (PRSV) | <div style="display: flex; justify-content: space-between; align-items: center;"> <div data-bbox="609 1906 738 1984"> equip Foodservice Accessories </div> <div data-bbox="747 1858 1096 2026"> </div> <div data-bbox="1104 1896 1550 1995"> 2 Saddleback Cove, P.O. Box 1088 Travelers Rest, South Carolina 29690 Phone: 800.891.4808 Fax: 800.868.0084 equip.tsbrass.com </div> </div> |

| ITEM NO. | SALES NO. | DESCRIPTION |
|----------|-----------|--|
| 1 | 5SV | equip 1.42 Spray Valve |
| 2 | 010476-45 | #27 Washer |
| 3 | 000907-45 | Spray Valve Hold Down Ring |
| 4 | 5HSE44 | equip 44" Flexible Stainless Steel Hose |
| 5 | 014068-45 | Overhead Spring |
| 6 | 000821-40 | Spring Body |
| 7 | 013716-40 | 6" Wall Bracket |
| 8 | 004R | Finger Hook |
| 9 | 000369-40 | 3/8" NPT x 18" Riser |
| 10 | 013788-45 | equip Ceramic Cartridge, LTC |
| 11 | 5-HDL-L | equip Lever Handle w/ Color Coded Screws |
| 12 | 002290-45 | Lock Washer |
| 13 | 000965-45 | Lock Nut |
| 14 | 012534-45 | 18" Flexible Supply Hose (2) |
| 15 | 010321-45 | 1/2" BSPP In-Line Check Valve |
| 16 | 013787-45 | equip Ceramic Cartridge, RTC |



Model Number
5PR-2S00

Product Compliance:
ASME A112.18.1 / CSA B125.1
NSF 61 - Section 9
NSF 372 (Low Lead Content)
EPA Act 2005 (PRSV)

Product Specifications:
Pre-Rinse Unit: Single Hole Deck Mount Mixing Faucet, Ceramic Cartridges, Lever Handles, 44" Flexible Stainless Steel Hose, 1.42 GPM Spray Valve, 1/2" BSPP In-Line Check Valves, 6" Wall Bracket & (2) 18" Flexible Supply Hoses

equip
Foodservice
Accessories



2 Saddleback Cove, P.O. Box 1088
Travelers Rest, South Carolina 29690
Phone: 800.891.4808 Fax: 800.868.0084
equip.tsbrass.com