

This Space for Architect/Engineer Approval

Job Name \_\_\_\_\_ Date \_\_\_\_\_

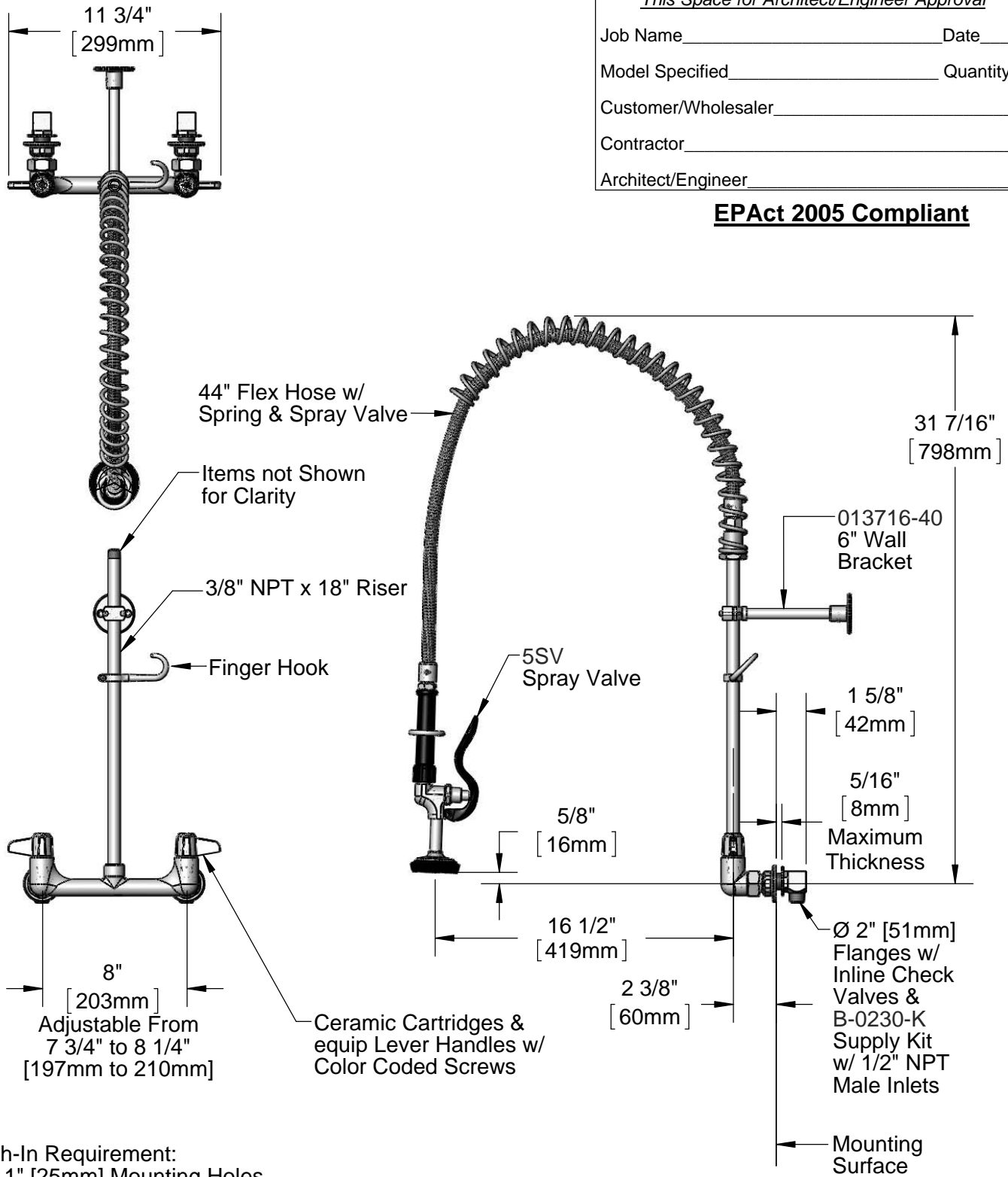
Model Specified \_\_\_\_\_ Quantity \_\_\_\_\_

Customer/Wholesaler \_\_\_\_\_

Contractor \_\_\_\_\_

Architect/Engineer \_\_\_\_\_

**EPAct 2005 Compliant**



**Rough-In Requirement:**  
(2) Ø 1" [25mm] Mounting Holes

|                            |                  |              |              |                |                 |
|----------------------------|------------------|--------------|--------------|----------------|-----------------|
| Model Number<br>5PR-8WLS00 | Date<br>08/08/12 | Scale<br>1:8 | Drawn<br>DHL | Checked<br>DMH | Approved<br>JHB |
|----------------------------|------------------|--------------|--------------|----------------|-----------------|

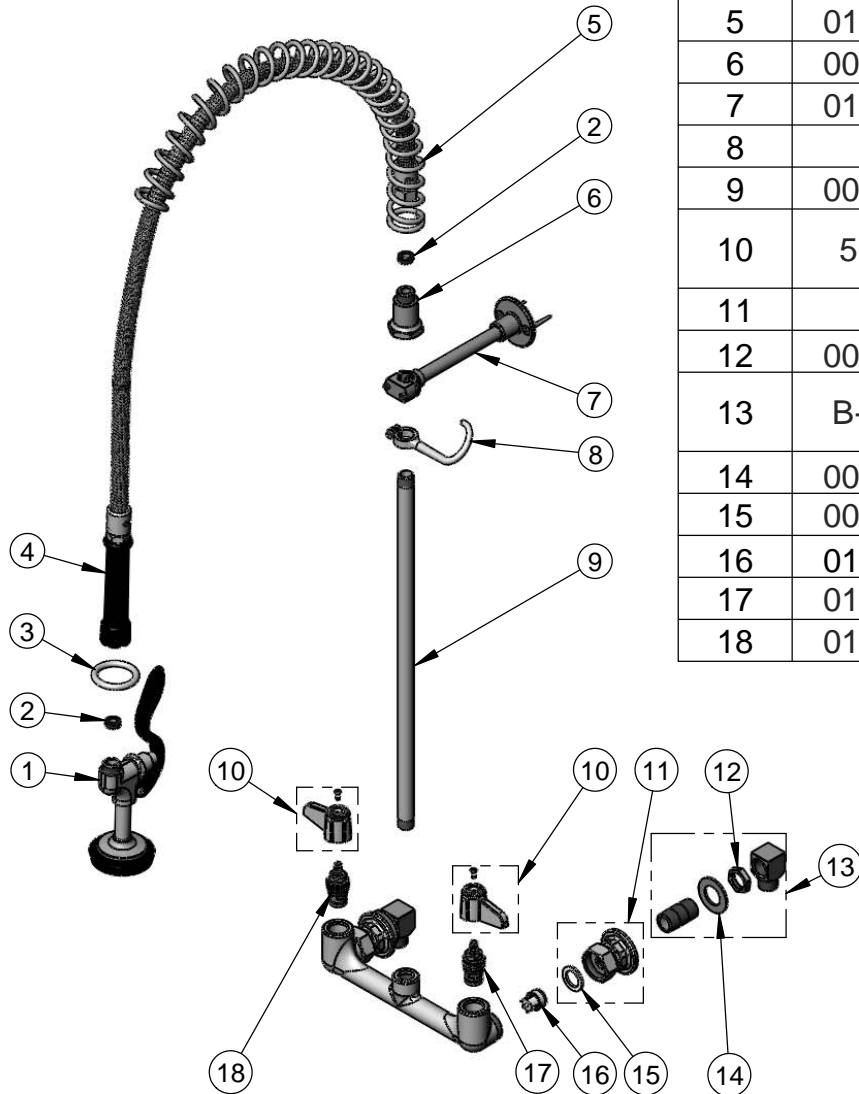
Product Specifications:

**Pre-Rinse Unit: 8" Wall Mount Mixing Faucet w/ 6" Wall Bracket, 5SV Spray Valve, In-Line Check Valves, 44" Flex Hose & B-0230-K Supply Kit w/1/2" NPT Male Inlets**



equip Foodservice Accessories  
2 Saddleback Cove, P.O. Box 1088  
Travelers Rest, South Carolina 29690  
Phone: 800.891.4808 Fax: 800.868.0084

| ITEM NO. | SALES NO. | DESCRIPTION                              |
|----------|-----------|--|
| 1        | 5SV       | Spray Valve Assembly                     |
| 2        | 010476-45 | #27 Washer                               |
| 3        | 000907-45 | Spray Valve Hold Down Ring               |
| 4        | 5HSE44    | 44" Flex Hose Assembly (Includes Washer) |
| 5        | 014068-45 | Overhead Spring                          |
| 6        | 000821-40 | Spring Body                              |
| 7        | 013716-40 | 6" Wall Bracket Assembly                 |
| 8        | 004R      | Finger Hook                              |
| 9        | 000369-40 | 3/8" NPT x 18" Long Riser                |
| 10       | 5-HDL-L   | equip Lever Handle w/ Color Coded Screws |
| 11       | 00AA      | 1/2" NPT Female Inlet Flange             |
| 12       | 002954-45 | Shank Lock Nut                           |
| 13       | B-0230-K  | Supply Kit w/ 1/2" NPT Male Inlet        |
| 14       | 000999-45 | Brass Lock Washer                        |
| 15       | 001019-45 | Coupling Nut Washer                      |
| 16       | 013840-45 | 20mm Check Valve (2)                     |
| 17       | 013788-45 | equip Ceramic Cartridge, LTC             |
| 18       | 013787-45 | equip Ceramic Cartridge, RTC             |



|                            |                  |              |              |                |                 |
|----------------------------|------------------|--------------|--------------|----------------|-----------------|
| Model Number<br>5PR-8WLS00 | Date<br>08/08/12 | Scale<br>NTS | Drawn<br>DHL | Checked<br>DMH | Approved<br>JHB |
|----------------------------|------------------|--------------|--------------|----------------|-----------------|



Product Specifications:

**Pre-Rinse Unit: 8" Wall Mount Mixing Faucet w/ 6" Wall Bracket, 5SV Spray Valve, In-Line Check Valves, 44" Flex Hose & B-0230-K Supply Kit w/1/2" NPT Male Inlets**

equip Foodservice Accessories  
 2 Saddleback Cove, P.O. Box 1088  
 Travelers Rest, South Carolina 29690  
 Phone: 800.891.4808 Fax: 800.868.0084