



T&S BRASS AND BRONZE WORKS, INC.
 2 Saddleback Cove / P.O. Box 1088
 Travelers Rest, SC 29690

Model No.
B-0101-ENP

Item No.

Travelers Rest, SC: 800-476-4103 • Simi Valley, CA: 800-423-0150 • Fax: 864-834-3518 • www.tsbrass.com

EPAct 2005 Non-Compliant

This Space for Architect/Engineer Approval

Job Name _____ Date _____

Model Specified _____ Quantity _____

Customer/Wholesaler _____

Contractor _____

Architect/Engineer _____



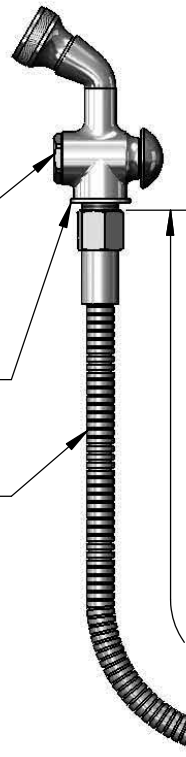
Ø 1 1/4"
 [32mm]
 Spray Face

Ø 2"
 [50mm]
 Flange

Push Button
 Spray Valve w/
 Rosespray Outlet

Stainless Steel
 Washer (For Use
 w/ B-KF Deck Flange)

28" Flexible Stainless
 Steel Hose



B-0104
 Wall Hook

2 5/16"
 [58mm]

1"
 [25mm]
 Maximum
 Thickness

90° Elbow
 w/ 3/8" NPT
 Female Inlet

B-0428
 3/8" NPT
 Supply Nipple

Mounting
 Surface

28"
 [711mm]

Rough-In Requirement:
 Ø 1" [25mm] Mounting Hole

Product Specifications:
 Spray Valve w/ 28" Flexible Stainless Steel Hose, Wall Hook,
 3/8" NPT Supply Nipple & 3/8" NPT Elbow

Drawn
KJG

Checked
DMH

Approved
JHB

Scale:
1:4

Date:
01/28/14



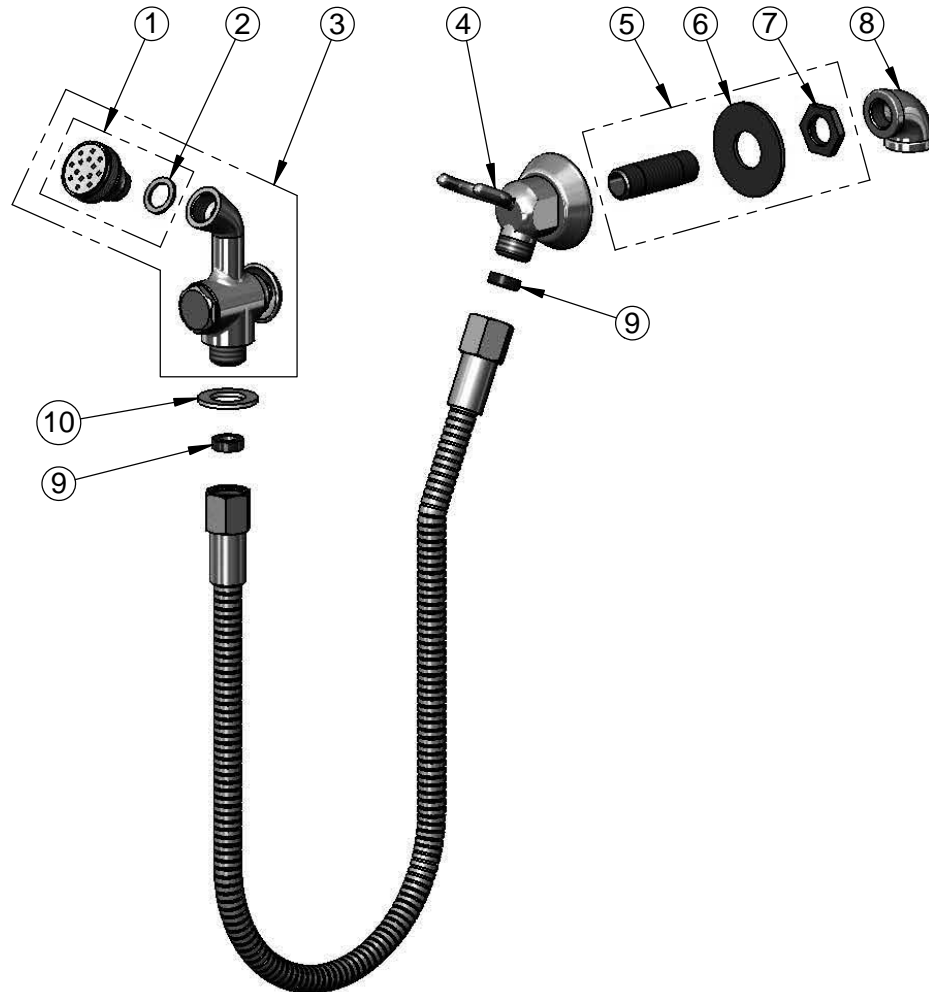
T&S BRASS AND BRONZE WORKS, INC.
 2 Saddleback Cove / P.O. Box 1088
 Travelers Rest, SC 29690

Model No.
B-0101-ENP

Item No.

Travelers Rest, SC: 800-476-4103 • Simi Valley, CA: 800-423-0150 • Fax: 864-834-3518 • www.tsbrass.com

ITEM NO.	SALES NO.	DESCRIPTION
1	B-0103	Spray Head
2	001043-45	Washer
3	002857-40	Spray Valve w/ Rosespray Outlet
4	B-0104	Wall Hook w/ 3/4-14UN Outlet
5	B-0428	3/8" NPT Supply Nipple
6	000998-45	Washer
7	000969-45	Nut, Lock, 3/8" NPSL, Brass
8	001355-40	Elbow, 3/8 NPT
9	010476-45	#27 Washer
10	001010-40	Washer, Stainless Steel



Product Specifications:
 Spray Valve w/ 28" Flexible Stainless Steel Hose, Wall Hook,
 3/8" NPT Supply Nipple & 3/8" NPT Elbow

Drawn KJG	Checked DMH	Approved JHB
Scale: NTS		Date: 01/28/14