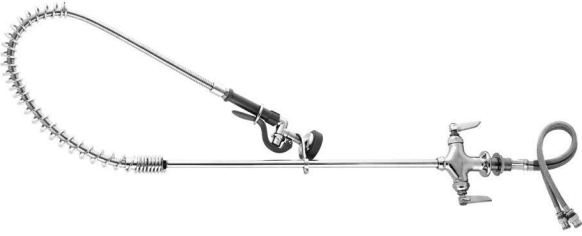




**RELIABILITY BUILT IN™**



**EasyInstall™**

**PRE-RINSE UNIT  
B-0113 Series  
(B-0113-B, Pre-Rinse  
Unit w/ Wall Bracket)**

## Installation and Maintenance Instructions

**Limited One Year Warranty**  
T&S warrants to the original purchaser (other than for purposes of resale) that such product is free from defects in material and workmanship for a period of one (1) year from the date of purchase. During this one-year warranty period, if the product is found to be defective, T&S shall, at its option, repair and/or replace it. To obtain warranty service, products must be returned to....

T&S Brass and Bronze Works, Inc.  
Attn: Warranty Repair Department  
2 Saddleback Cove  
Travelers Rest, SC 29690

Shipping, freight, insurance, and other transportation charges of the product to T&S and the return of repaired or replaced product to the purchaser are the responsibility of the purchaser. Repair and/or replacement shall be made within a reasonable time after receipt by T&S of the returned product. This warranty does not cover items which have received secondary finishing or have been altered or modified after purchase, or for defects caused by physical abuse to or misuse of the product, or shipment of the products.

Any express warranty not provided herein, and any remedy for Breach of Contract which might arise, is hereby excluded and disclaimed. Any implied warranties of merchantability or fitness for a particular purpose are limited to one year in duration. Under no circumstance shall T&S be liable for loss of use or any special consequential cost, expenses or damages.

Some states do not allow limitations on how long an implied warranty lasts or the exclusion or limitation of incidental or consequential damages, so the above limitations or exclusions may not apply to you. Specific rights under this warranty and other rights vary from state to state.

P/N: 098-01 4494-45 REV. 5  
DATE: 04-26-12  
DRAWN: TEH  
CHECKED: JRM 06-13-12  
APPROVED: JHB 06-21-12



**Step 1:**  
Insert flex line inlets and tighten by hand. Apply plumber's putty to underside of body and insert into mounting hole. With wrench, tighten the locking nut.



**Step 2:**  
Apply plumber's tape to top of riser threads and attach to spring assembly. Tighten with wrench.



**Step 3:**  
Make sure that the EasyInstall® locking washer is seated properly inside the faucet body.



**Step 4:**  
Grab riser assembly and lower the EasyInstall® end-fitting into faucet body. Press down until the end-fitting "pops" in.



**Step 5:**  
Lock the EasyInstall® locking nut in place. Tighten with wrench.

## Base Faucet Assembly

1	Base Faucet Assembly	014207-40
2	Faucet Body Assembly	015066-40
3	Asm, Spindle - Hot w/ Spring Check	002712-40
4	Hot Cartridge Only w/ Spring Check	012443-40
5	Asm, Spindle - Cold w/ Spring Check	002711-40
6	Cold Cartridge Only w/ Spring Check	012442-40
7	Cerama Cartridge w/ Check Valve, RTC	011311-25
8	Cerama Cartridge w/ Check Valve, LTC	011312-25
9	Handle, Lever - Blank	001638-45
10	Screw, Handle	000922-45
11	Index, Button - Hot (Red)	001661-45
12	Index, Button - Cold (Blue)	001660-45
13	Washer, Body	002290-45
14	Locknut, Shank	000965-45
15	Lock Washer, Easyinstall®	014200-45
16	Flexible Connector Hoses	012534-45

## Riser Assembly

11	Riser Assembly, 24"	000372-40
12	Nipple, 3/8" x 24"	EZ-K
13	Swivel Assembly, Easyinstall®	N/A
14	Swivel Piece	001065-45
15	O-Ring, Swivel Piece	004R
44	Asm, Finger Hook & Screw	B-0109-01
44	Wall Bracket, 6" (add -B to model no. for wall bracket)	

## Pre-Rinse Unit

16	Pre-Rinse Assembly	000821-40
17	Spring, Body	000888-45
18	Spring, Overhead	B-0044-H
19	Asm, Flex Stainless Steel Hose	B-0107
19	Asm, Spray Valve	

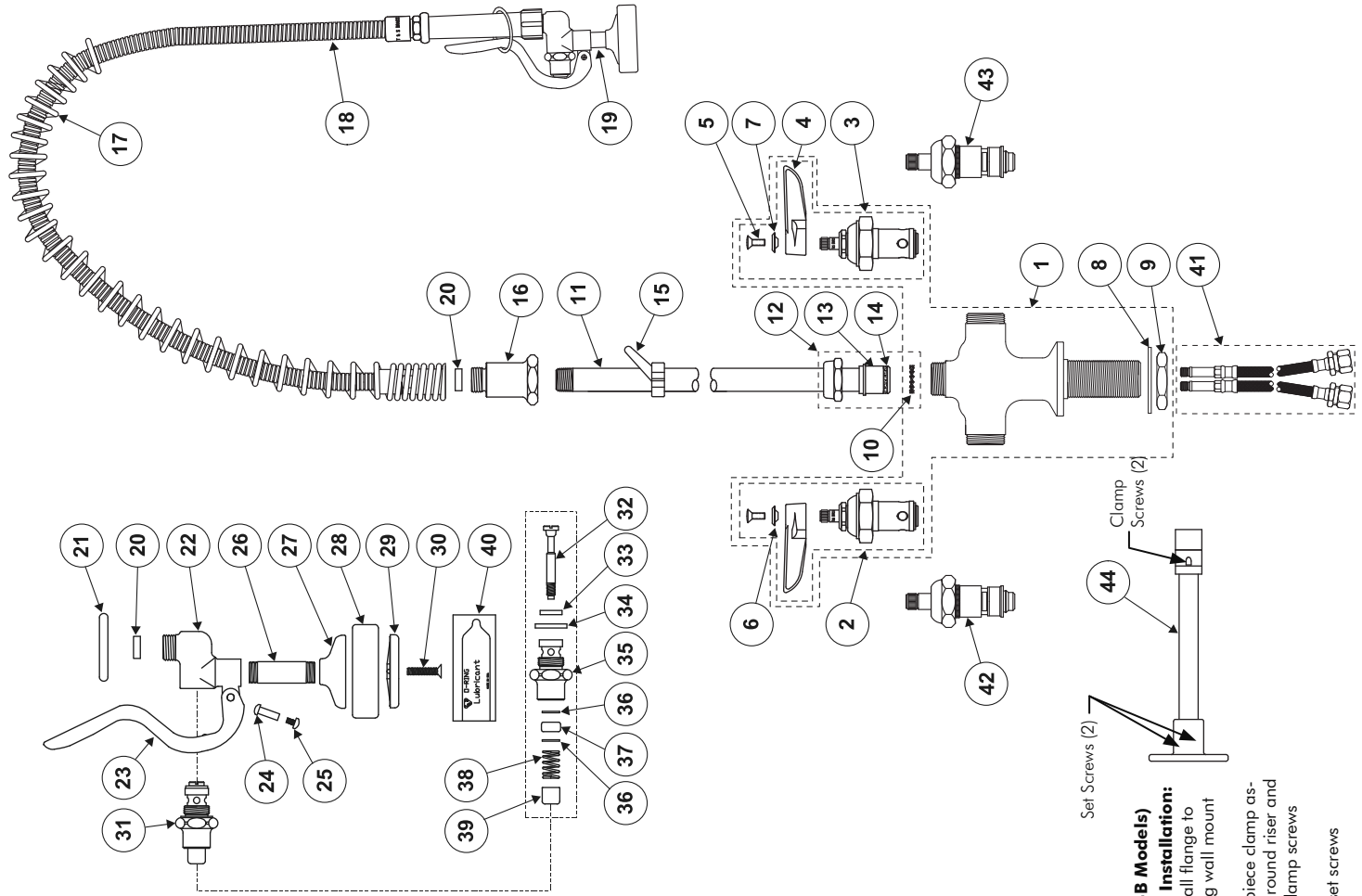
## Spray Valve Assembly

20	Asm, Hold Down Ring & Washer	010476-45
21	Washer	000907-45
22	Ring, Hold Down	000065-40
23	Body, Spray Valve (No Handle)	001120-45
24	Handle	003198-45
25	Nut, Handle	003199-45
26	Screw, Handle	000694-40
27	Nipple	000019-40
28	* Cup, Spray	007861-45
29	* Ring, Sprayhead	001121-45
30	* Sprayface	000913-45
30	* Screw, Sprayface	

## Bonnet Assembly

31	Asm, Bonnet	002856-40
32	* Stem	009306-20
33	* Washer, Seat	012915-45
34	* Washer, Bonnet Binding	001040-45
35	Bonnet	000608-25
36	* Washer, Bonnet Brass	000974-45
37	* Stem, Packing	001100-45
38	* Spring, Bonnet	000895-45
39	Push Button	000753-25
40	* Grease Pack (O-Ring Lubricant)	012665-45

\* Parts included in B-10K parts kit



### OPTIONAL (-B Models) Wall Bracket Installation:

1. Fasten wall flange to wall using wall mount screws
2. Place 2-piece clamp assembly around riser and tighten clamp screws securely.
3. Tighten set screws securely.