



T&S BRASS AND BRONZE WORKS, INC.

2 Saddleback Cove / P.O. Box 1088
Travelers Rest, SC 29690

Model No.

B-0133-CR-B08SK

Item No.

Travelers Rest, SC: 800-476-4103 • Simi Valley, CA: 800-423-0150 • Fax: 864-834-3518 • www.tsbrass.com

This Space for Architect/Engineer Approval

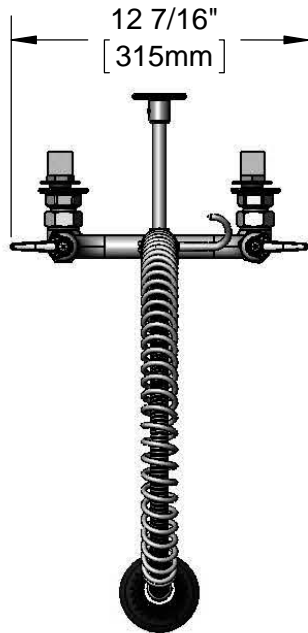
Job Name _____ Date _____

Model Specified _____ Quantity _____

Customer/Wholesaler _____

Contractor _____

Architect/Engineer _____



44" Flexible Stainless Steel Hose w/ Spring & Spray Valve

Items Not Shown for Clarity

Finger Hook

3/8" NPT x 18" Riser

EasyInstall Lock Nut & Bushing

B-0108
1.48 GPM
JeTSpray Valve

B-0109-01
6" Wall
Bracket

018200-40
Pre-Rinse
Swivel

33 3/8"
[848mm]

3 9/16"
[91mm]

8"
[203mm]

Adjustable From
7 3/4" to 8 1/4"
[197mm to 210mm]

Cerama Cartridges
w/ Check Valves &
Lever Handles w/
Color Coded Indexes

4 1/2"
[115mm]

14 7/16"
[367mm]

2 3/8"
[61mm]

Mounting Surface

3/16"
[6mm]
Maximum
Thickness

B-0230-K
Installation Kit
w/ 1/2" NPT
Male Inlets

Rough-In Requirement:
(2) ϕ 1" [25mm] Mounting Holes

Product Specifications:

Pre-Rinse Unit: EasyInstall 8" Wall Mount Mixing Faucet, Cerama Cartridges w/ Check Valves, Lever Handles, 18" Riser, Overhead Spring, 44" Flexible Stainless Steel Hose, 1.48 GPM JeTSpray Valve w/ Swivel, 6" Wall Bracket & 1/2" NPT Female Inlets w/ Installation Kit

Product Compliance:

ASME A112.18.1 / CSA B125.1
NSF 61 - Section 9
NSF 372 (Low Lead Content)
EPA 2005 (PRSV)



T&S BRASS AND BRONZE WORKS, INC.

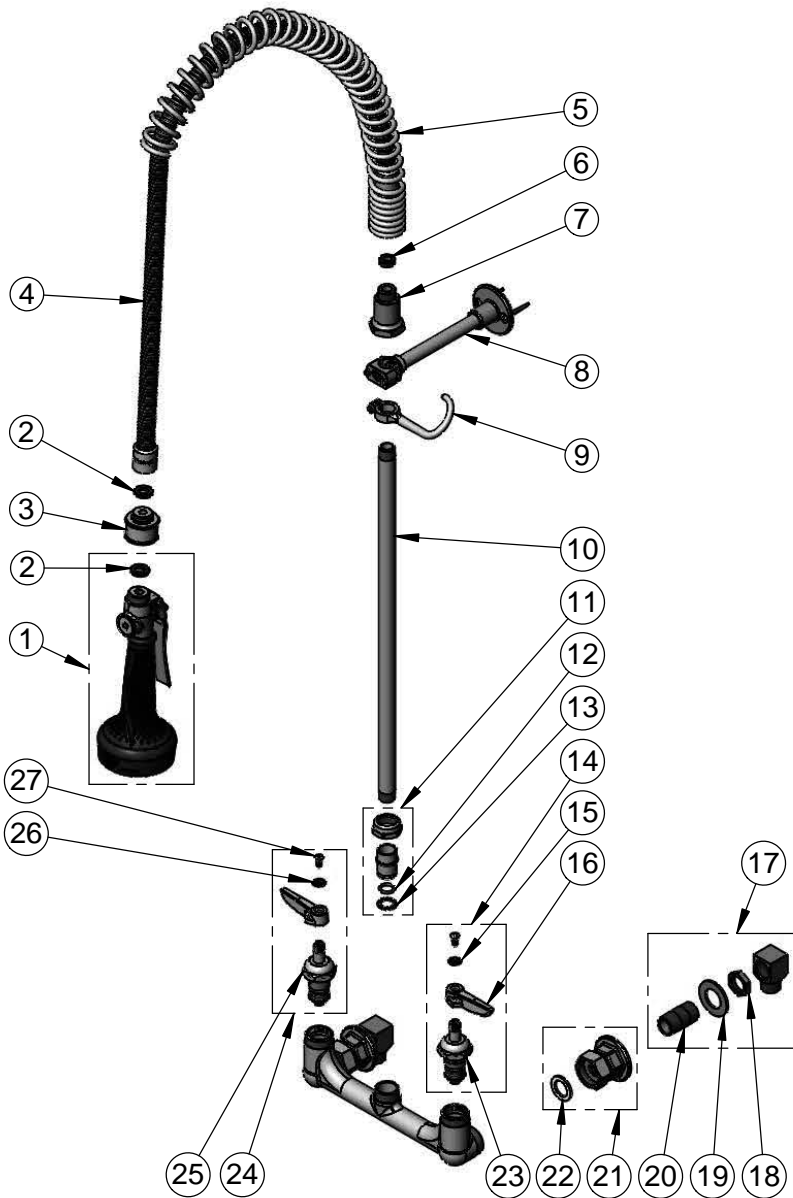
2 Saddleback Cove / P.O. Box 1088
Travelers Rest, SC 29690

Model No.

B-0133-CR-B08SK

Item No.

Travelers Rest, SC: 800-476-4103 • Simi Valley, CA: 800-423-0150 • Fax: 864-834-3518 • www.tsbrass.com



| ITEM NO. | SALES NO. | DESCRIPTION |
|----------|------------|--|
| 1 | B-0108 | 1.48 GPM Spray Valve w/ Ergo-Grip |
| 2 | 001014-45 | Washer, B-0100 Hose Barrel |
| 3 | 018200-45 | Pre-Rinse Swivel w/ (2) Washers |
| 4 | B-0044-H2A | 44" Flexible Stainless Steel Hose, Less Handle |
| 5 | 000888-45 | EasyInstall Overhead Spring |
| 6 | 010476-45 | #27 Washer |
| 7 | 000821-40 | Spring Body |
| 8 | B-0109-01 | 6" Wall Bracket |
| 9 | 004R | Finger Hook |
| 10 | 000369-40 | 3/8" NPT x 18" Riser |
| 11 | EZ-K | EasyInstall Kit: Nut, Bushing, O-Ring & Lock Washer |
| 12 | 001065-45 | O-Ring |
| 13 | 014200-45 | Star Washer, Anti-Rotation |
| 14 | 012447-25 | Quarter-Turn Cerama Cartridge, LTC w/ Check Valve, Handle, Index & Screw |
| 15 | 001660-45 | Blue Index-CW |
| 16 | 001638-45 | Lever Handle |
| 17 | B-0230-K | Short Elbow Installation Kit |
| 18 | 002954-45 | Shank Lock Nut |
| 19 | 000999-45 | Brass Lock Washer |
| 20 | 013357-20 | 1/2" NPT x 1-5/8" Lg. Close Nipple |
| 21 | 00AA | 1/2" NPT Female Eccentric Flange |
| 22 | 001019-45 | Coupling Nut Washer |
| 23 | 012395-25 | Quarter-Turn Cerama Cartridge, LTC w/ Check Valve |
| 24 | 012446-25 | Quarter-Turn Cerama Cartridge, RTC w/ Check Valve, Handle, Index & Screw |
| 25 | 012394-25 | Quarter-Turn Cerama Cartridge, RTC w/ Check Valve |
| 26 | 001661-45 | Red Index-HW |
| 27 | 000922-45 | Lever Handle Screw |

Product Specifications:

Pre-Rinse Unit: EasyInstall 8" Wall Mount Mixing Faucet, Cerama Cartridges w/ Check Valves, Lever Handles, 18" Riser, Overhead Spring, 44" Flexible Stainless Steel Hose, 1.48 GPM Jet Spray Valve w/ Swivel, 6" Wall Bracket & 1/2" NPT Female Inlets w/ Installation Kit

Product Compliance:

ASME A112.18.1 / CSA B125.1
NSF 61 - Section 9
NSF 372 (Low Lead Content)
EPA Act 2005 (PRSV)