



T&S BRASS AND BRONZE WORKS, INC.

2 Saddleback Cove / P.O. Box 1088
Travelers Rest, SC 29690

Model No.

B-0176

Item No.

Travelers Rest, SC: 800-476-4103 • Simi Valley, CA: 800-423-0150 • Fax: 864-834-3518 • www.tsbrass.com

This Space for Architect/Engineer Approval

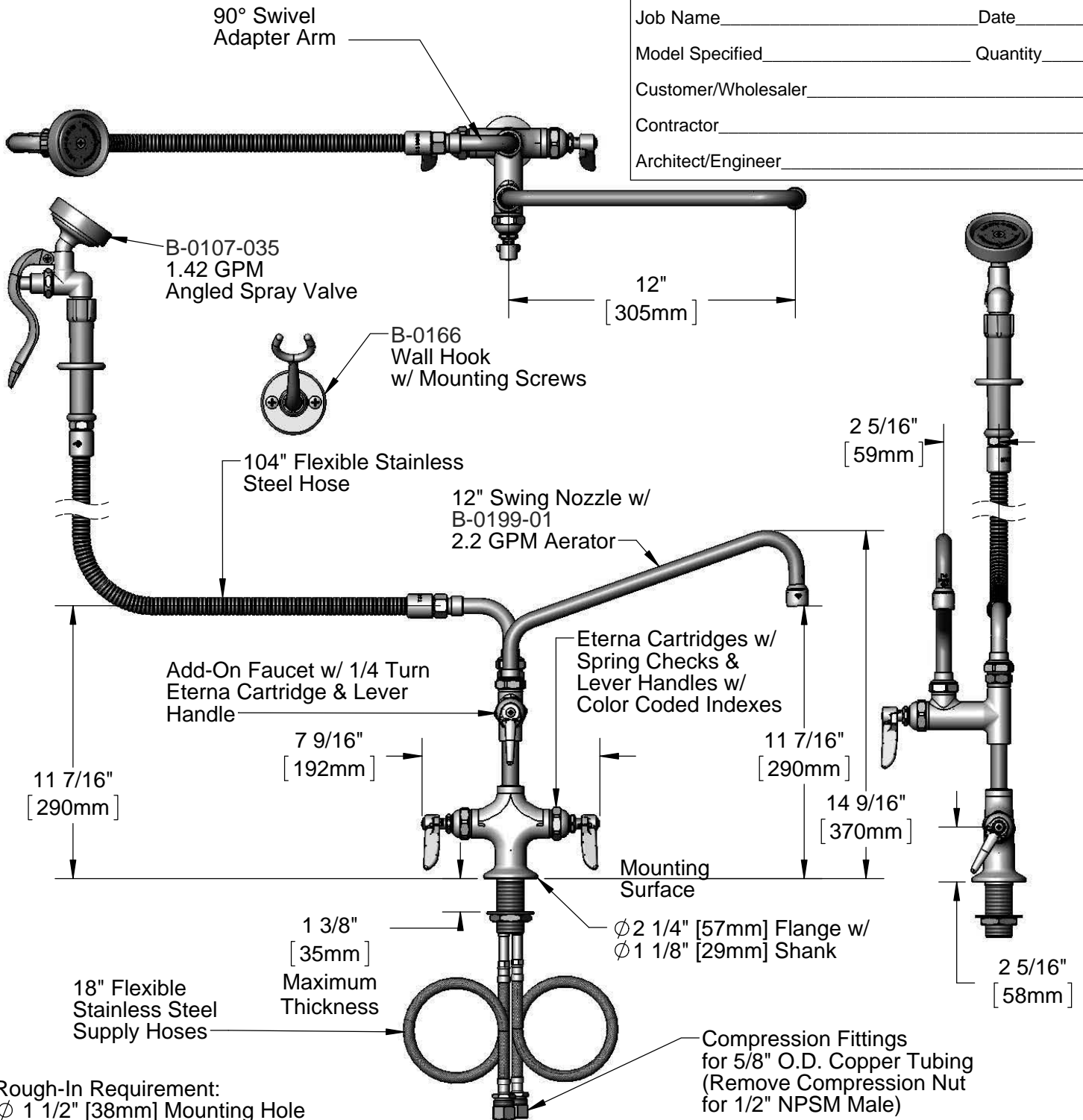
Job Name _____ Date _____

Model Specified _____ Quantity _____

Customer/Wholesaler _____

Contractor _____

Architect/Engineer _____



Rough-In Requirement:
Ø 1 1/2" [38mm] Mounting Hole

Product Specifications:

Single Hole Deck Mount Mixing Faucet, Eterna Cartridges w/ Spring Checks, Add-On Faucet, 12" Swing Nozzle w/ 2.2 GPM Aerator, 90° Swivel Adapter, 104" Flexible Stainless Steel Hose, 1.42 GPM Angled Spray Valve, Wall Hook & 18" Flexible Stainless Steel Supply Hoses w/ 1/2" NPSM Male Inlets

Product Compliance:

ASME A112.18.1 / CSA B125.1
NSF 61 - Section 9
NSF 372 (Low Lead Content)
EPA Act 2005 (PRSV)



T&S BRASS AND BRONZE WORKS, INC.

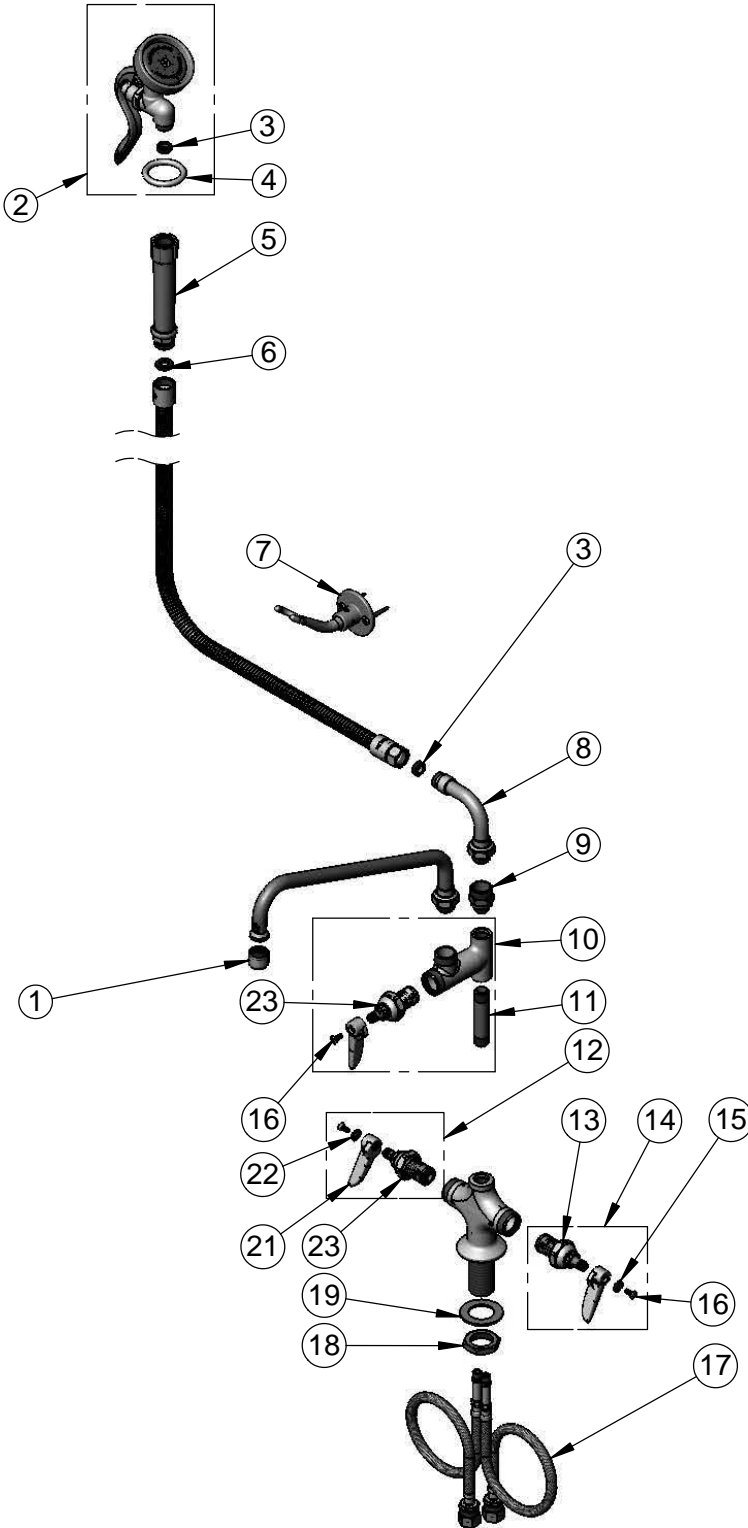
2 Saddleback Cove / P.O. Box 1088
Travelers Rest, SC 29690

Model No.

B-0176

Item No.

Travelers Rest, SC: 800-476-4103 • Simi Valley, CA: 800-423-0150 • Fax: 864-834-3518 • www.tsbrass.com



ITEM NO.	SALES NO.	DESCRIPTION
1	B-0199-01	2.2 GPM Aerator, 55/64"-27 UN Female
2	B-0107-035	1.42 GPM Angled Spray Valve
3	010476-45	#27 Washer
4	000907-45	Spray Valve Hold Down Ring
5	002987-40	Grip Handle
6	001014-45	Washer, B-0100 Hose Barrel
7	B-0166	Wall Hook w/ Mounting Screws
8	034A	90° Swivel Adapter Arm
9	B-0412	Rigid to Swivel Adapter
10	B-0155-LN	Add-On Faucet w/ Lever Handle, Less Nozzle
11	000358-40	Nipple, 3/8" NPT x 3"
12	002712-40	Eterna Cartridge, RTC w/ Spring Check, Lever Handle, Index & Screw
13	012442-40	Eterna Cartridge, LTC w/ Spring Check
14	002711-40	Eterna Cartridge, LTC w/ Spring Check, Lever Handle, Index & Screw
15	001660-45	Blue Index-CW
16	000922-45	Lever Handle Screw
17	012534-45	18" Flexible Supply Hose (2)
18	000965-45	Lock Nut
19	002290-45	Lock Washer
20	012443-40	Eterna Cartridge, RTC w/ Spring Check
21	001638-45	Lever Handle
22	001661-45	Red Index-HW
23	005960-40QT	1/4 Turn Eterna Cartridge, RTC

Product Specifications:

Single Hole Deck Mount Mixing Faucet, Eterna Cartridges w/ Spring Checks, Add-On Faucet, 12" Swing Nozzle w/ 2.2 GPM Aerator, 90° Swivel Adapter, 104" Flexible Stainless Steel Hose, 1.42 GPM Angled Spray Valve, Wall Hook & 18" Flexible Stainless Steel Supply Hoses w/ 1/2" NPSM Male Inlets

Product Compliance:

ASME A112.18.1 / CSA B125.1
NSF 61 - Section 9
NSF 372 (Low Lead Content)
EPA Act 2005 (PRSV)