



T&S BRASS AND BRONZE WORKS, INC.

2 Saddleback Cove / P.O. Box 1088
Travelers Rest, SC 29690

Model No.

B-0200-44H-VB

Item No.

Travelers Rest, SC: 800-476-4103 • Simi Valley, CA: 800-423-0150 • Fax: 864-834-3518 • www.tsbrass.com

This Space for Architect/Engineer Approval

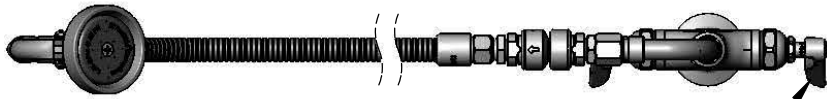
Job Name _____ Date _____

Model Specified _____ Quantity _____

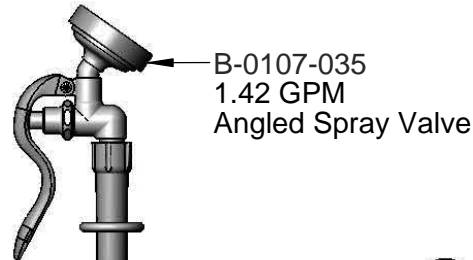
Customer/Wholesaler _____

Contractor _____

Architect/Engineer _____



Quarter-Turn Eterna Cartridges
w/ Spring Checks & Lever
Handles w/ Color Coded Indexes



B-0107-035
1.42 GPM
Angled Spray Valve



Wall Hook
w/ (2) Mounting Screws



1 3/8"
[35mm]
Maximum
Thickness

44" Flexible Stainless
Steel Hose

B-0970-01
3/8" NPT Vacuum Breaker
(Continuous Pressure)

90° Swivel
Adapter Arm

Swivel Joint

7 9/16"
[192mm]

Mounting
Surface

6 1/4"
[158mm]

2 5/16"
[58mm]

Ø 2 1/4" [57mm] Flange w/
Ø 1 1/8" [29mm] Shank

18" Flexible
Stainless Steel
Supply Hoses

Compression Fittings
for 5/8" O.D. Copper Tubing
(Remove Compression Nut
for 1/2" NPSM Male)

Rough-In Requirement:
Ø 1 1/2" [38mm] Mounting Hole

Product Specifications:

Single Hole Deck Mount Mixing Faucet, Eterna Cartridges w/ Spring Checks, 90° Swivel Adapter, 44" Flexible Stainless Steel Hose, 1.42 GPM Angled Spray Valve, 3/8" NPT Vacuum Breaker, Wall Hook & 18" Flexible Stainless Steel Supply Hoses w/ 1/2" NPSM Male Inlets

Product Compliance:

ASME A112.18.1 / CSA B125.1
NSF 61 - Section 9
NSF 372 (Low Lead Content)
EPA Act 2005 (PRSV)
CSA B64.8



T&S BRASS AND BRONZE WORKS, INC.

2 Saddleback Cove / P.O. Box 1088
Travelers Rest, SC 29690

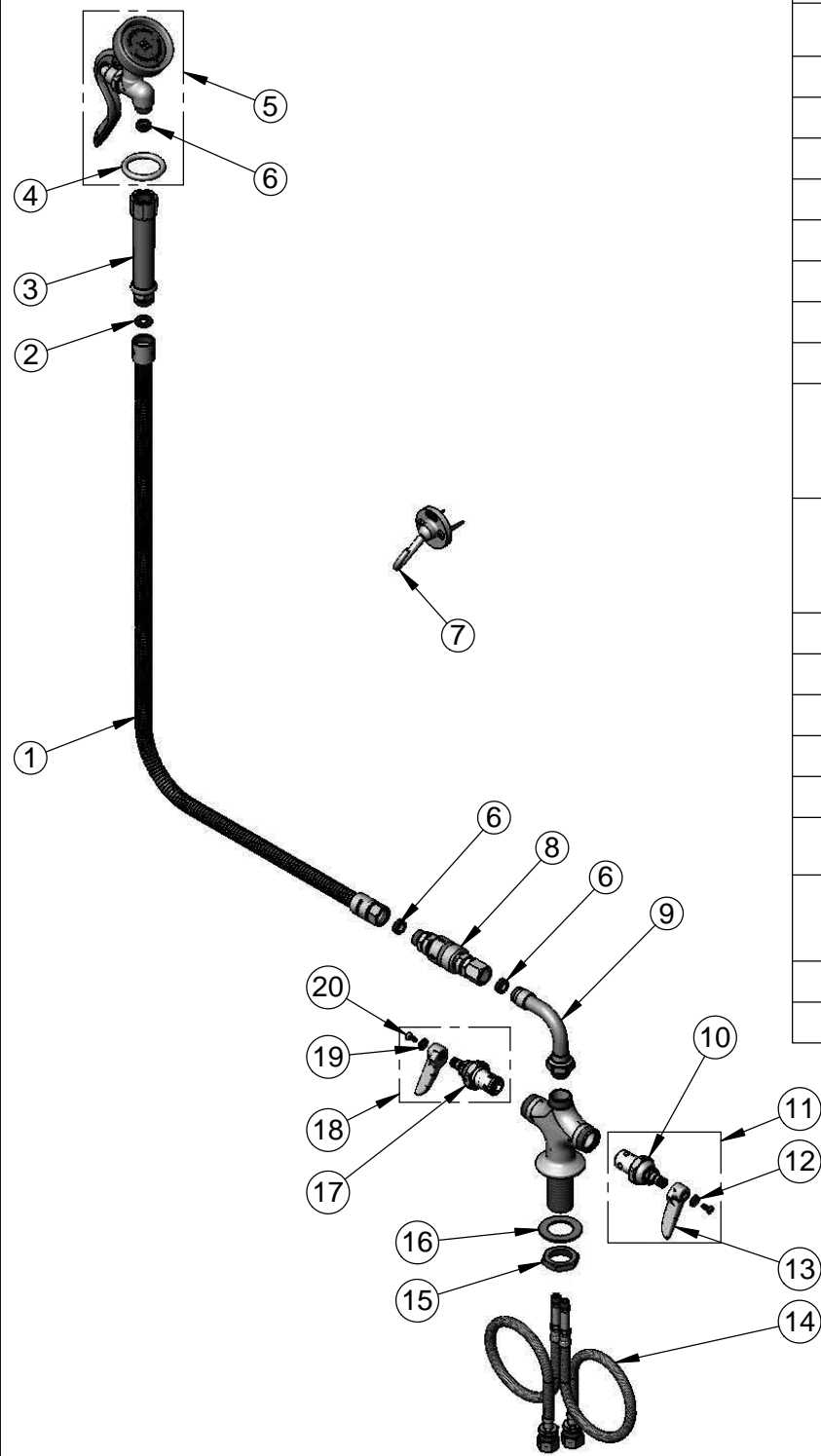
Model No.

B-0200-44H-VB

Item No.

Travelers Rest, SC: 800-476-4103 • Simi Valley, CA: 800-423-0150 • Fax: 864-834-3518 • www.tsbrass.com

ITEM NO.	SALES NO.	DESCRIPTION
1	B-0044-H2A	44" Flexible Stainless Steel Hose, Less Handle
2	001014-45	Washer, B-0100 Hose Barrel
3	002987-40	Grip Handle
4	000907-45	Spray Valve Hold Down Ring
5	B-0107-035	1.42 GPM Angled Spray Valve
6	010476-45	#27 Washer
7	B-0104-D	Dummy Wall Hook
8	B-0970-01	3/8" NPT Vacuum Breaker
9	034A	90° Swivel Adapter Arm
10	012442-40	Quarter-Turn Eterna Cartridge, LTC w/ Spring Check
11	002711-40	Quarter-Turn Eterna Cartridge, LTC w/ Spring Check, Lever Handle, Index & Screw
12	001660-45	Blue Index-CW
13	001638-45	Lever Handle
14	012534-45	18" Flexible Supply Hose (2)
15	000965-45	Lock Nut
16	002290-45	Lock Washer
17	012443-40	Eterna Cartridge, RTC w/ Spring Check
18	002712-40	Eterna Cartridge, RTC w/ Spring Check, Lever Handle, Index & Screw
19	001661-45	Red Index-HW
20	000922-45	Lever Handle Screw



Product Specifications:
Single Hole Deck Mount Mixing Faucet, Eterna Cartridges w/ Spring Checks, 90° Swivel Adapter, 44" Flexible Stainless Steel Hose, 1.42 GPM Angled Spray Valve, 3/8" NPT Vacuum Breaker, Wall Hook & 18" Flexible Stainless Steel Supply Hoses w/ 1/2" NPSM Male Inlets

Product Compliance:
ASME A112.18.1 / CSA B125.1
NSF 61 - Section 9
NSF 372 (Low Lead Content)
EPA Act 2005 (PRSV)
CSA B64.8