



T&S BRASS AND BRONZE WORKS, INC.

2 Saddleback Cove / P.O. Box 1088
Travelers Rest, SC 29690

Model No.

B-0296

Item No.

Travelers Rest, SC: 800-476-4103 • Simi Valley, CA: 800-423-0150 • Fax: 864-834-3518 • www.tsbrass.com



ADA Compliant

This Space for Architect/Engineer Approval

Job Name _____ Date _____

Model Specified _____ Quantity _____

Customer/Wholesaler _____

Contractor _____

Architect/Engineer _____

3 7/16"
[88mm]



114X
Big-Flo 12" Swing Nozzle
w/ Plain End Outlet

Swivel
Joint

Big-Flo Cartridges &
4-Arm Handle w/
Blue Color Coded
Index

1 7/16"
[37mm]

2 9/16"
[65mm]

12 1/16"
[307mm]

8 7/16"
[214mm]

Mounting Surface

5/8"
[16mm]
Maximum
Thickness

Ø 2" [51mm]
Flange w/
1/2" NPT
Male Inlet

Rough-In Requirement:
(2) Ø 1" [25mm] Mounting Holes

Product Specifications:

Single Hole Single Temperature Faucet, 4-Arm Handle, Big-Flo
12" Swing Nozzle & 1/2" NPT Supply Nipple Kit

Product Compliance:

ASME A112.18.1 / CSA B125.1
NSF 61 - Section 9
NSF 372 (Low Lead Content)
ANSI A117.1 (ADA)

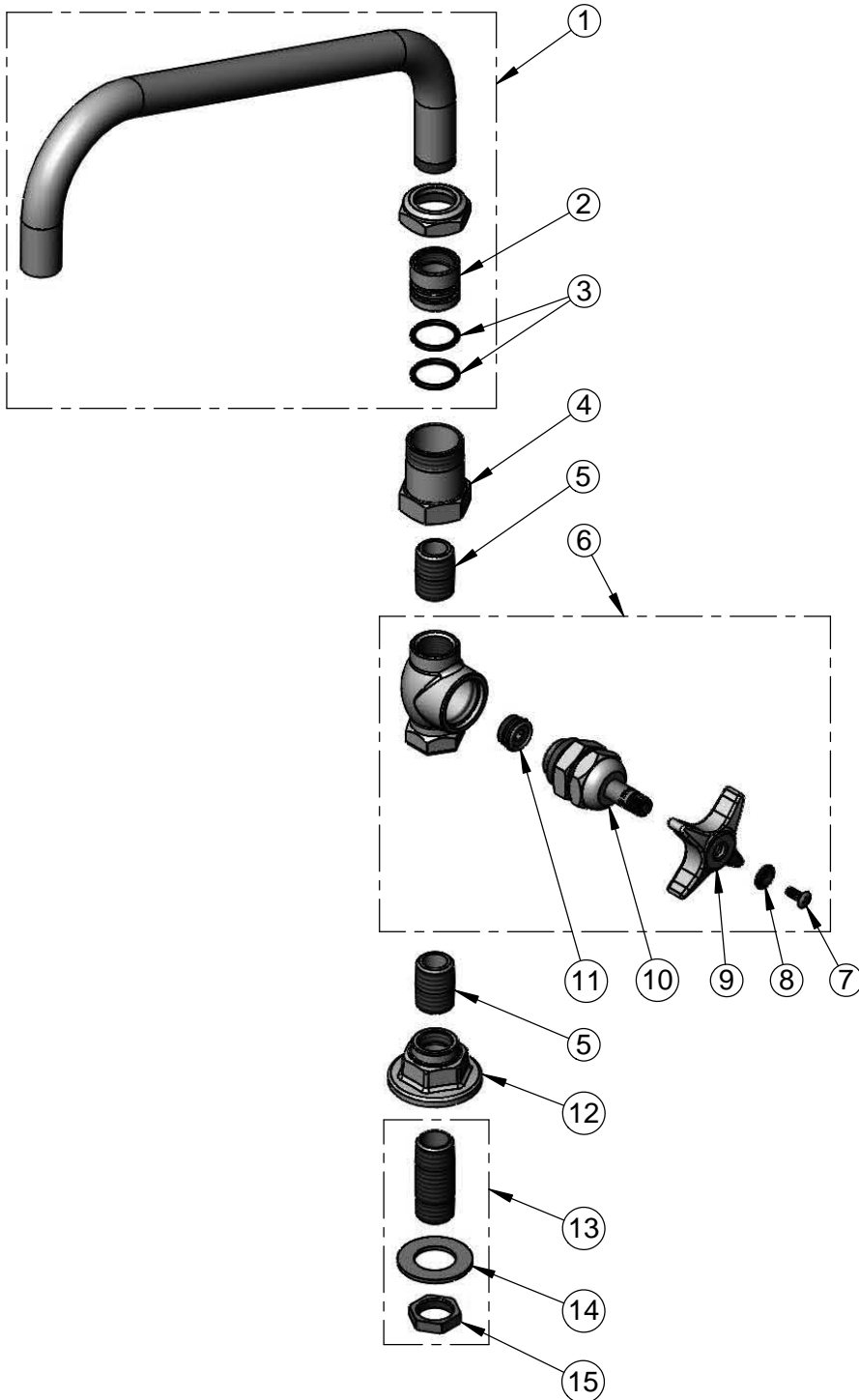


T&S BRASS AND BRONZE WORKS, INC.
 2 Saddleback Cove / P.O. Box 1088
 Travelers Rest, SC 29690

Model No.
B-0296
 Item No.

Travelers Rest, SC: 800-476-4103 • Simi Valley, CA: 800-423-0150 • Fax: 864-834-3518 • www.tsbrass.com

| ITEM NO. | SALES NO. | DESCRIPTION |
|----------|-----------|--------------------------------|
| 1 | 114X | 12" Big-Flo Swing Nozzle |
| 2 | 000847-20 | Swivel Piece |
| 3 | 001068-45 | O-ring |
| 4 | 000594-25 | Swivel Body x 1/2-14 NPT |
| 5 | 002534-25 | Close Nipple, 1/2" NPT |
| 6 | 002900-40 | Valve Assembly w/ 4-Arm Handle |
| 7 | 000922-45 | Lever Handle Screw |
| 8 | 001660-45 | Blue Index-CW |
| 9 | 002521-45 | 4-Arm Handle |
| 10 | 006482-40 | Big-Flo Cartridge, RTC |
| 11 | 000764-20 | Seat, Big-Flo |
| 12 | 000013-40 | Flange, 1/2" NPT Wall Mount |
| 13 | B-0425 | 1/2" NPT Supply Nipple Kit |
| 14 | 000999-45 | Brass Lock Washer |
| 15 | 002954-45 | Shank Lock Nut |



Product Specifications:
 Single Hole Single Temperature Faucet, 4-Arm Handle, Big-Flo
 12" Swing Nozzle & 1/2" NPT Supply Nipple Kit

Product Compliance:
 ASME A112.18.1 / CSA B125.1
 NSF 61 - Section 9
 NSF 372 (Low Lead Content)
 ANSI A117.1 (ADA)