



T&S BRASS AND BRONZE WORKS, INC.

2 Saddleback Cove / P.O. Box 1088
Travelers Rest, SC 29690



REG. #A2601
ISO #9001

Model No.

B-0298

Item No.

Travelers Rest, SC: 800-476-4103 Simi Valley, CA: 800-423-0150

www.tsbrass.com

This Space for Architect/Engineer Approval

Job Name _____ Date _____

Model Specified _____ Quantity _____

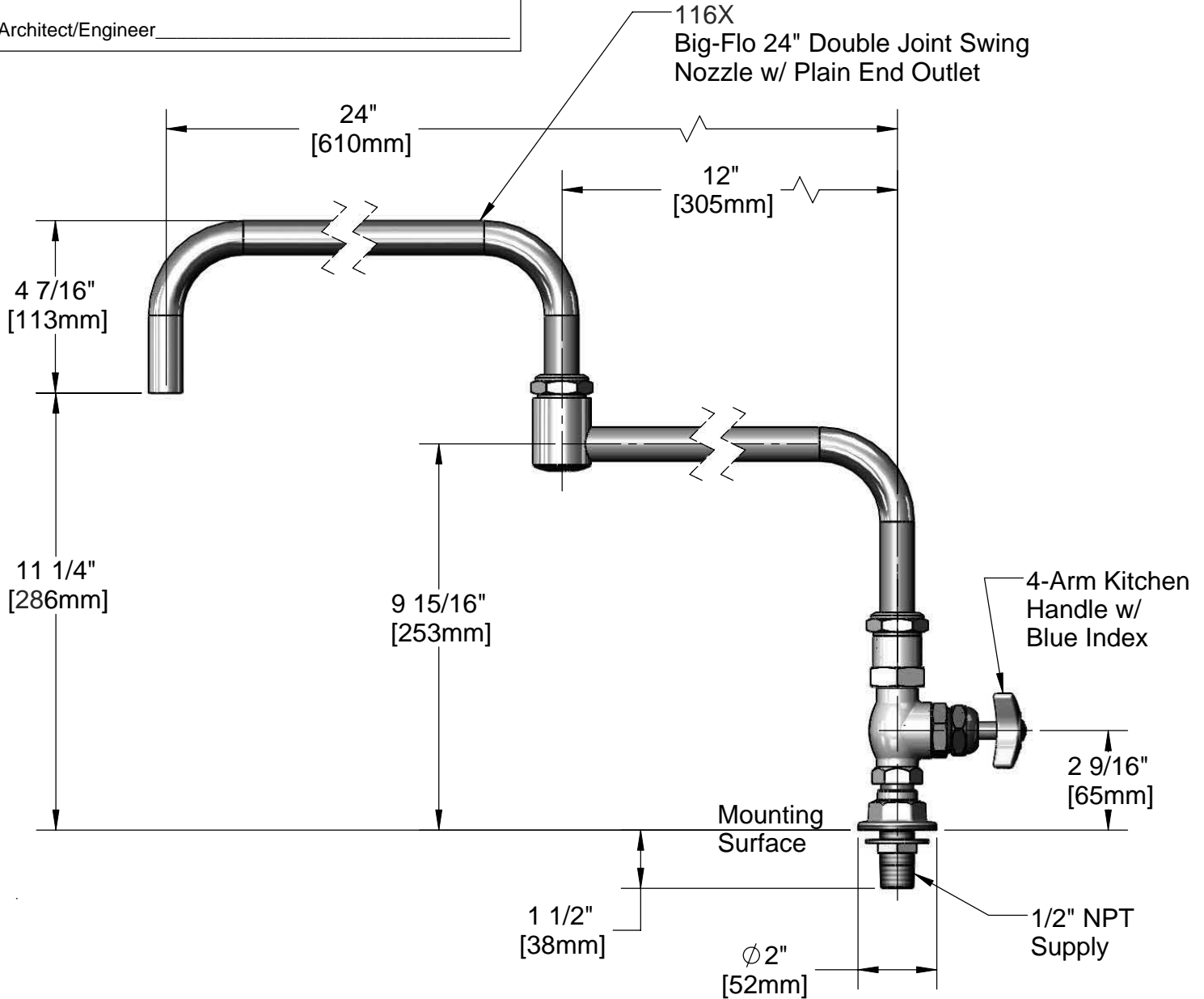
Customer/Wholesaler _____

Contractor _____

Architect/Engineer _____



ADA Compliant



Rough-In: ϕ 1" [25mm] Hole

Product Specifications:

Full Flow Faucet w/ Big-Flo 24" Double Swing Nozzle,
Control Valve & 1/2" NPT Female Inlet

Drawn

DMH

Checked

KJG

Approved

JHB

Scale:

1:4

Date:

02/08/10



T&S BRASS AND BRONZE WORKS, INC.

2 Saddleback Cove / P.O. Box 1088
Travelers Rest, SC 29690



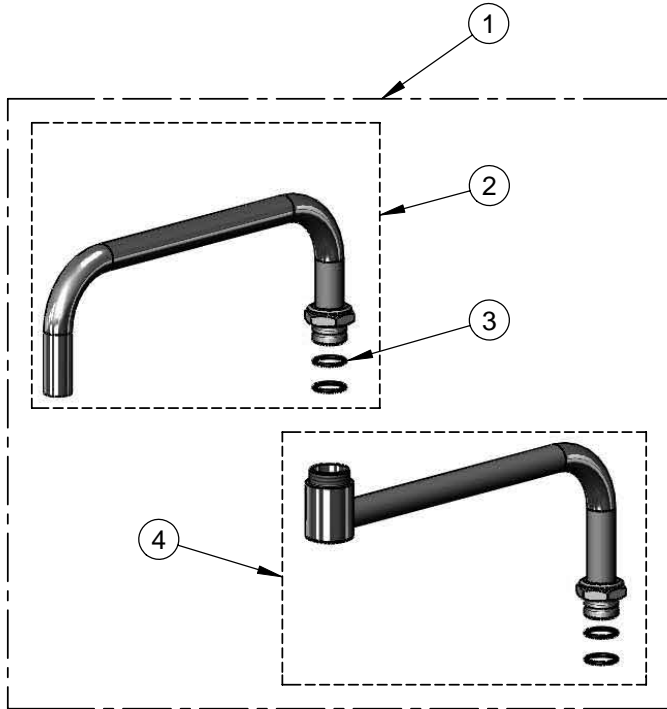
REG. #A2601
ISO #9001

Model No.

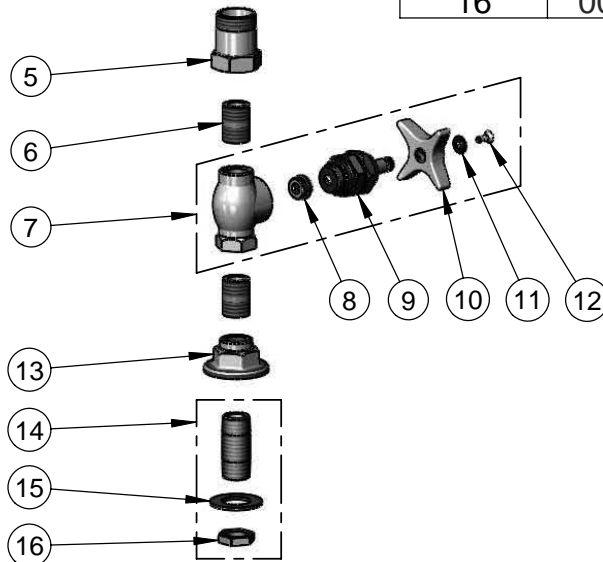
B-0298

Item No.

Travelers Rest, SC: 800-476-4103 Simi Valley, CA: 800-423-0150 Fax: 864-834-3518 www.tsbrass.com



ITEM NO.	SALES NO.	DESCRIPTION
1	116X	24" Double Joint Big-Flo Swing Nozzle
2	117X	12" Front Section
3	001068-45	O-ring, Size -118
4	118X	12" Back Section
5	000594-25	Swivel Body x 1/2" NPT
6	002534-25	Close Nipple, 1/2" x 1 5/32" Lg Rough Chrome
7	002900-40	Valve Assembly w/ 4-Arm Handle
8	000764-20	Seat, B-290 RM
9	006482-40	Spindle Asm, B-0290 (RH)
10	002521-45	4-Arm Handle
11	001660-45	Blue Index-CW
12	000922-45	Lever Handle Screw
13	000013-40	Flange, 1/2" NPT Wall Mount
14	B-0425	Supply Nipple Unit, 1/2" NPT
15	000999-45	Brass Lock Washer
16	002954-45	Shank Lock Nut



Product Specifications:

Full Flow Faucet w/ Big-Flo 24" Double Swing Nozzle, Control Valve & 1/2" NPT Female Inlet

Drawn DMH	Checked KJG	Approved JHB
Scale: NTS		Date: 02/08/10