



**T&S BRASS AND BRONZE WORKS, INC.**

2 Saddleback Cove / P.O. Box 1088  
 Travelers Rest, SC 29690



REG. #A2601  
 ISO #9001

Model No.

**B-0300-PF**

Item No.

Travelers Rest, SC: 800-476-4103 • Simi Valley, CA: 800-423-0150 • Fax: 864-834-3518 • www.tsbrass.com

**EPAct2005 NON-COMPLIANT**

This Space for Architect/Engineer Approval

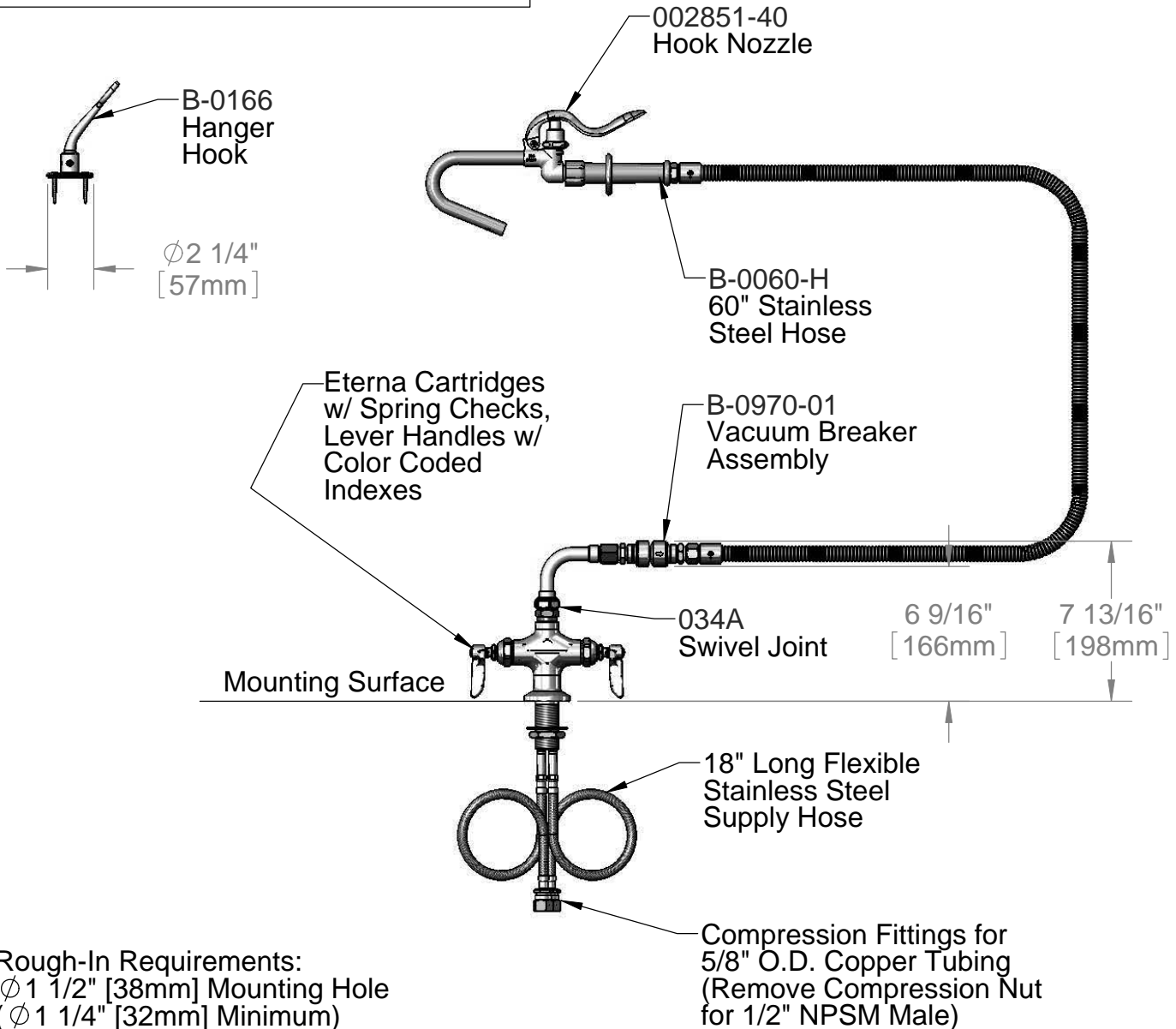
Job Name \_\_\_\_\_ Date \_\_\_\_\_

Model Specified \_\_\_\_\_ Quantity \_\_\_\_\_

Customer/Wholesaler \_\_\_\_\_

Contractor \_\_\_\_\_

Architect/Engineer \_\_\_\_\_



**Rough-In Requirements:**  
 $\phi 1 \frac{1}{2}$ " [38mm] Mounting Hole  
 ( $\phi 1 \frac{1}{4}$ " [32mm] Minimum)

**Product Specifications:**

Double Pantry Deck Mount Faucet, Eterna Cartridges w/ Spring Checks, Pail Hook Nozzle, 60" Flex Hose, Vacuum Breaker, & Flexible Supply Hoses

Drawn

**KJG**

Checked

**DMH**

Approved

**JHB**

Scale:

**1:8**

Date:

**04/08/11**



**T&S BRASS AND BRONZE WORKS, INC.**

2 Saddleback Cove / P.O. Box 1088  
 Travelers Rest, SC 29690



REG. #A2601  
 ISO #9001

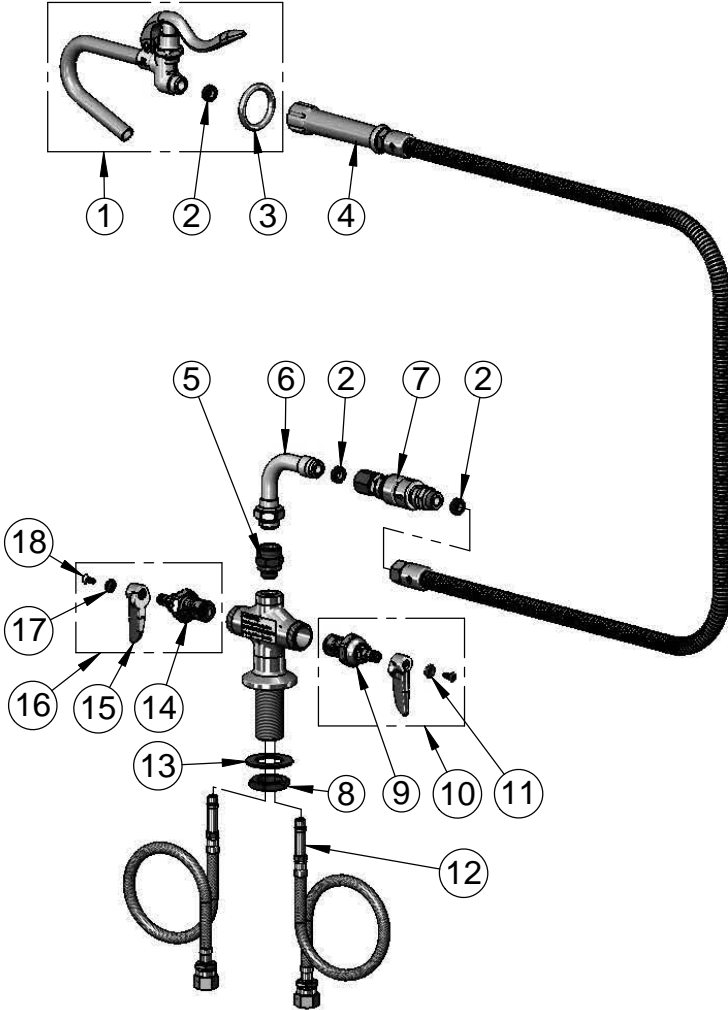
Model No.

**B-0300-PF**

Item No.

Travelers Rest, SC: 800-476-4103 • Simi Valley, CA: 800-423-0150 • Fax: 864-834-3518 • www.tsbrass.com

ITEM NO.	SALES NO.	DESCRIPTION
1	002851-40	B-0187 Spray Valve & Hook Nozzle Asm
2	010476-45	#27 Washer
3	000907-45	Spray Valve Hold Down Ring
4	B-0060-H	60" Flex Hose Assembly
5	B-0412	Rigid to Swivel Adapter
6	034A	Hose Adapter Asm, 90 Deg.
7	B-0970-01	Vacuum Breaker
8	000965-45	Lock Nut
9	012442-40	Eterna Cartridge - LTC
10	002711-40	Cold Eterna Spindle Asm w/ Spring Check, Handle, Index & Screw
11	001660-45	Blue Index-CW
12	012534-45	Flexible Connector Hose (2)
13	002290-45	Lock Washer
14	012443-40	Eterna Cartridge - RTC
15	001638-45	Lever Handle
16	002712-40	Hot Eterna Spindle Asm w/ Spring Check, Handle, Index & Screw
17	001661-45	Red Index-HW
18	000922-45	Lever Handle Screw



Product Specifications:

Double Pantry Deck Mount Faucet, Eterna Cartridges w/ Spring Checks, Pail Hook Nozzle, 60" Flex Hose, Vacuum Breaker, & Flexible Supply Hoses

Drawn

**KJG**

Checked

**DMH**

Approved

**JHB**

Scale:

**NTS**

Date:

**04/08/11**