



# T&S BRASS AND BRONZE WORKS, INC.

2 Saddleback Cove / P.O. Box 1088  
Travelers Rest, SC 29690



REG. #A2601  
ISO #9001

Model No.

**B-0363**

Item No.

Travelers Rest, SC: 800-476-4103 Simi Valley, CA: 800-423-0150 Fax: 864-834-3518 www.tsbrass.com

This Space for Architect/Engineer Approval

Job Name \_\_\_\_\_ Date \_\_\_\_\_

Model Specified \_\_\_\_\_ Quantity \_\_\_\_\_

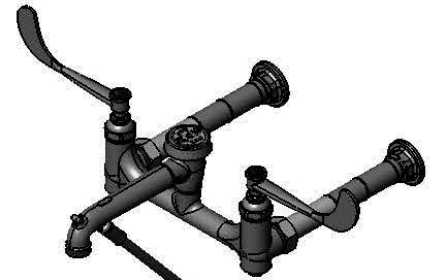
Customer/Wholesaler \_\_\_\_\_

Contractor \_\_\_\_\_

Architect/Engineer \_\_\_\_\_



**ADA Compliant**

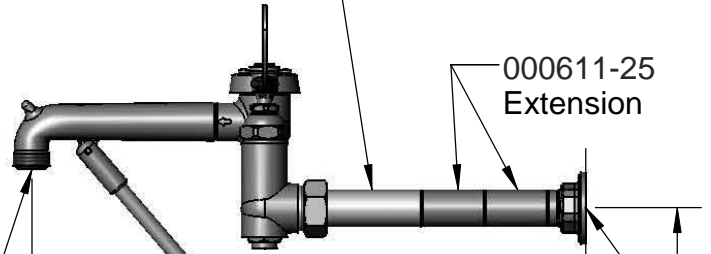
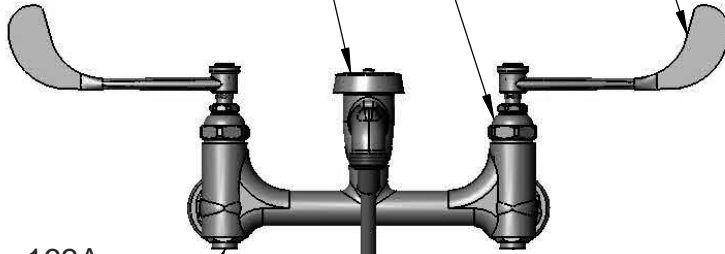


Eterna Cartridges w/  
Spring Checks

B-WH6  
6" Wrist Action Handles  
w/ Color Coded Indexes

B-0969  
1/2" NPT  
Vacuum Breaker

000610-25  
Extension



163A  
Integral  
Supply  
Stops

000611-25  
Extension

2 7/16"  
[62mm]

8 15/16"  
[226mm]

1/2" NPT  
Female  
Thread Inlets

3/4-11 1/2  
Garden Hose  
Male Thread

Lower Wall Support  
Assembly Furnished  
w/ Wall Bracket &  
Mounting Screws

13 13/16"  
[350mm]

Mounting Surface

15 3/8"  
[391mm]

8" c/c  
[203mm]  
Adjustable from  
7 3/4" to 8 1/4"  
[197mm to 210mm]

Product Specifications:

**8" Centers Service Sink w/ Spout, Lower Wall Support  
6" Wrist Action Handles, 1/2" NPT Female Thread Inlets  
w/ Extensions**

Drawn  
**DHL**

Checked  
**KJG**

Approved  
**JHB**

Scale:

**NTS**

Date:

**02/10/09**



# T&S BRASS AND BRONZE WORKS, INC.

2 Saddleback Cove / P.O. Box 1088  
Travelers Rest, SC 29690



REG. #A2601  
ISO #9001

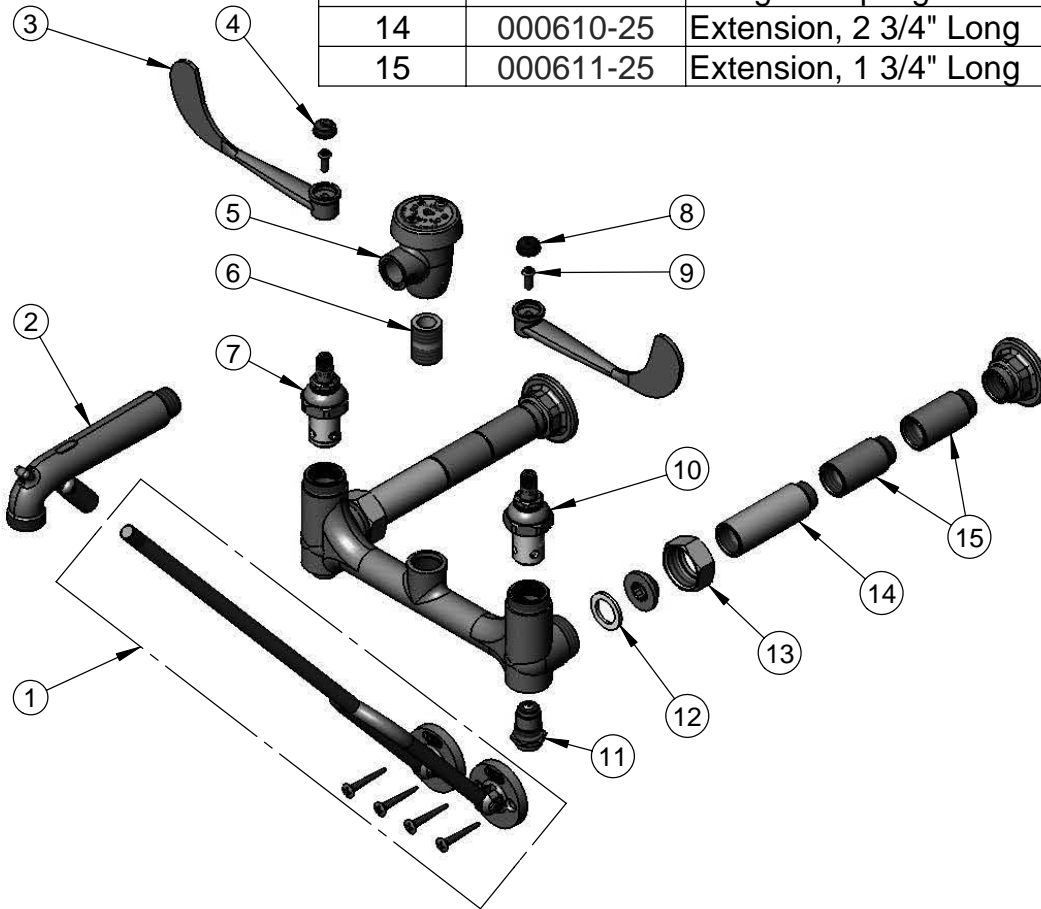
Model No.

**B-0363**

Item No.

Travelers Rest, SC: 800-476-4103 Simi Valley, CA: 800-423-0150 Fax: 864-834-3518 www.tsbrass.com

ITEM NO.	SALES NO.	DESCRIPTION
1	015476-40	Lower Support Rod Assembly w/ Mounting Screws
2	016450-40	Spout Assembly w/ Lower Support Clevis
3	B-WH6	6" Wrist Action Handle
4	001194-45	Red HW Index
5	B-0969	Vacuum Breaker, 1/2"
6	002534-25	Close Nipple, 1/2" x 1 5/32" Lg Rough Chrome
7	012443-40	Hot Eterna Spindle Assembly w/ Spring Check
8	001686-45	Blue CW Index
9	000925-45	Lab Handle Screw
10	012442-40	Cold Eterna Spindle Assembly w/ Spring Check
11	163A	BST Assembly, 163A
12	001019-45	Coupling Nut Washer
13	000721-25	Flange Coupling Nut
14	000610-25	Extension, 2 3/4" Long
15	000611-25	Extension, 1 3/4" Long



Product Specifications:

8" Centers Service Sink w/ Spout, Lower Wall Support  
6" Wrist Action Handles, 1/2" NPT Female Thread Inlets  
w/ Extensions

Drawn <b>DHL</b>	Checked <b>KJG</b>	Approved <b>JHB</b>
Scale: <b>NTS</b>		Date: <b>02/10/09</b>