



T&S BRASS AND BRONZE WORKS, INC.

2 Saddleback Cove / P.O. Box 1088
Travelers Rest, SC 29690

Model No.

B-0665-BSTP-VRS

Item No.

Travelers Rest, SC: 800-476-4103 • Simi Valley, CA: 800-423-0150 • Fax: 864-834-3518 • www.tsbrass.com

This Space for Architect/Engineer Approval

Job Name _____ Date _____

Model Specified _____ Quantity _____

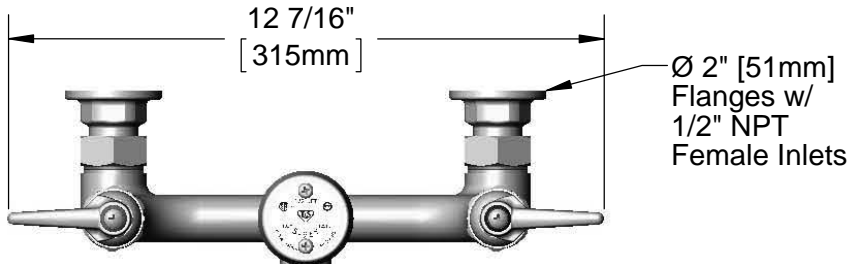
Customer/Wholesaler _____

Contractor _____

Architect/Engineer _____



ADA Compliant



Ø 2" [51mm]
Flanges w/
1/2" NPT
Female Inlets

Support Rod w/
Wall Bracket &
Mounting Screws
(Included)

Support Rod
Not Shown for Clarity

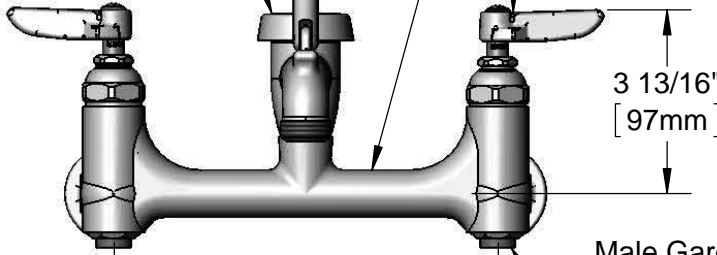
Polished Chrome
Finish on Faucet
Body & Spout

B-0969
1/2" NPT
Vacuum
Breaker

Eterna Cartridges w/ Spring
Checks & Lever Handles w/
Color Coded Indexes &
Vandal Resistant Screws

14 3/8"
[364mm]

Mounting
Surface



Male Garden
Hose Outlet

8"
[203mm]
Adjustable From
7 3/4" to 8 1/4"
[197mm to 210mm]

Integral
Service Stop

1 1/8"
[28mm]

6 1/2"
[164mm]

9 1/8"
[232mm]

Product Specifications:

8" Polished Chrome Service Sink, Inlet Stops, Eterna Cartridges w/ Spring Checks, Lever Handles, Vandal Resistant Screws & 1/2" NPT Female Inlets

Drawn

KJG

Checked

DHL

Approved

JHB

Scale:

1:4

Date:

01/11/13



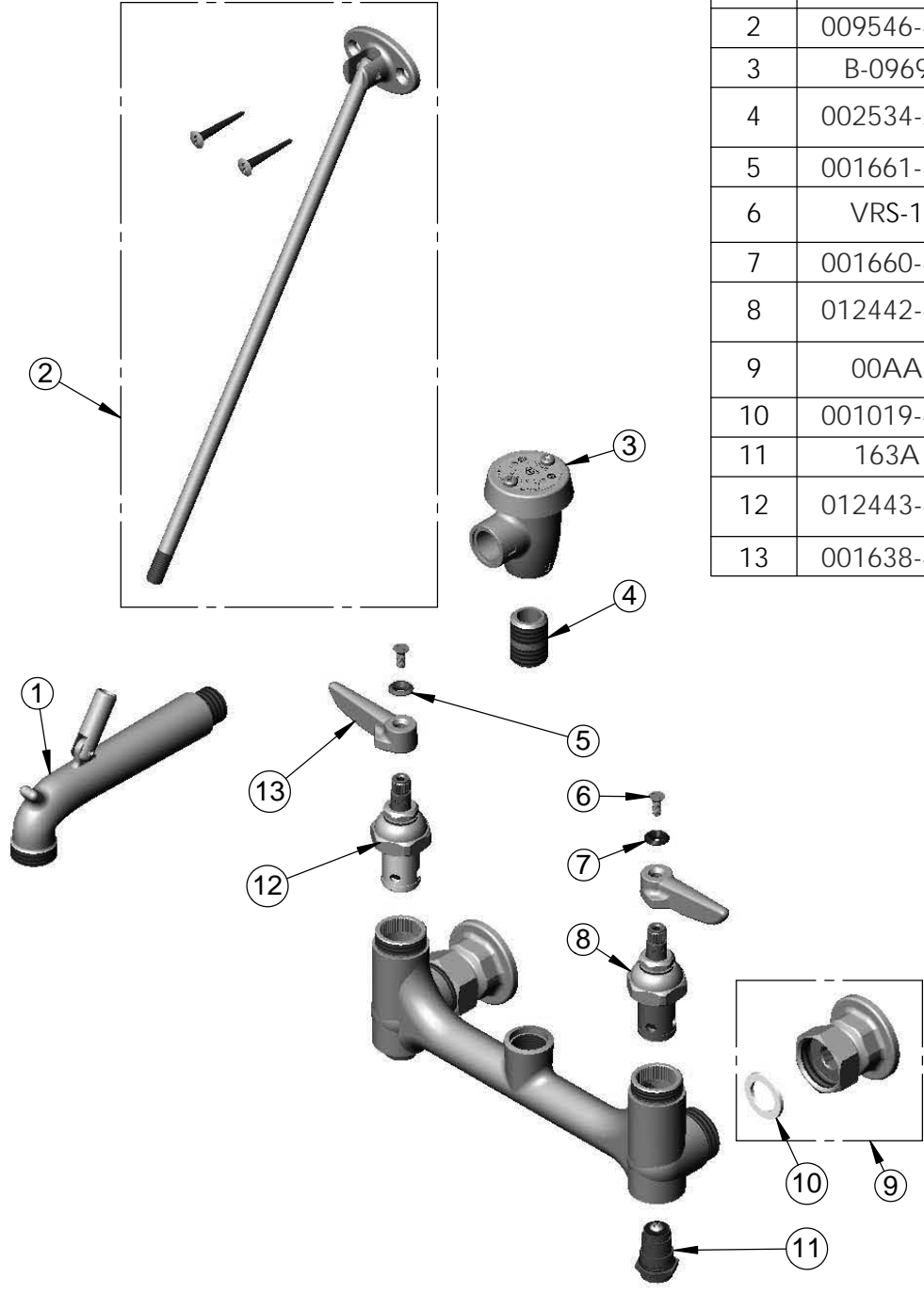
T&S BRASS AND BRONZE WORKS, INC.
 2 Saddleback Cove / P.O. Box 1088
 Travelers Rest, SC 29690


Model No.
B-0665-BSTP-VRS

Item No.

Travelers Rest, SC: 800-476-4103 • Simi Valley, CA: 800-423-0150 • Fax: 864-834-3518 • www.tsbrass.com

ITEM NO.	SALES NO.	DESCRIPTION
1	009545-40	Spout w/ Upper Clevis - Polished Chrome
2	009546-40	Upper Support Rod
3	B-0969	1/2" NPT Vacuum Breaker
4	002534-25	Close Nipple, 1/2" NPSM, Heavy Wall Rough Chrome
5	001661-45	Red Index-HW
6	VRS-1	VR Lever Handle Screw (2) w/ Spanner Bit
7	001660-45	Blue Index-CW
8	012442-40	Eterna Cartridge, LTC w/ Spring Check
9	00AA	1/2" NPT Female Eccentric Flange
10	001019-45	Coupling Nut Washer
11	163A	Built-in Service Stop
12	012443-40	Eterna Cartridge, RTC w/ Spring Check
13	001638-45	Lever Handle




 014075-45
 Vandal Resistant
 Spanner Bit
 (Included)

Product Specifications:
 8" Polished Chrome Service Sink, Inlet Stops, Eterna Cartridges w/
 Spring Checks, Lever Handles, Vandal Resistant Screws & 1/2" NPT
 Female Inlets

Drawn KJG	Checked DHL	Approved JHB
Scale: NTS		Date: 01/11/13