



T&S BRASS AND BRONZE WORKS, INC.

2 Saddleback Cove / P.O. Box 1088
Travelers Rest, SC 29690

Model No.

B-0676-54V

Item No.

Travelers Rest, SC: 800-476-4103 • Simi Valley, CA: 800-423-0150 • Fax: 864-834-3518 • www.tsbrass.com

This Space for Architect/Engineer Approval

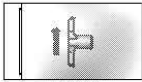
Job Name _____ Date _____

Model Specified _____ Quantity _____

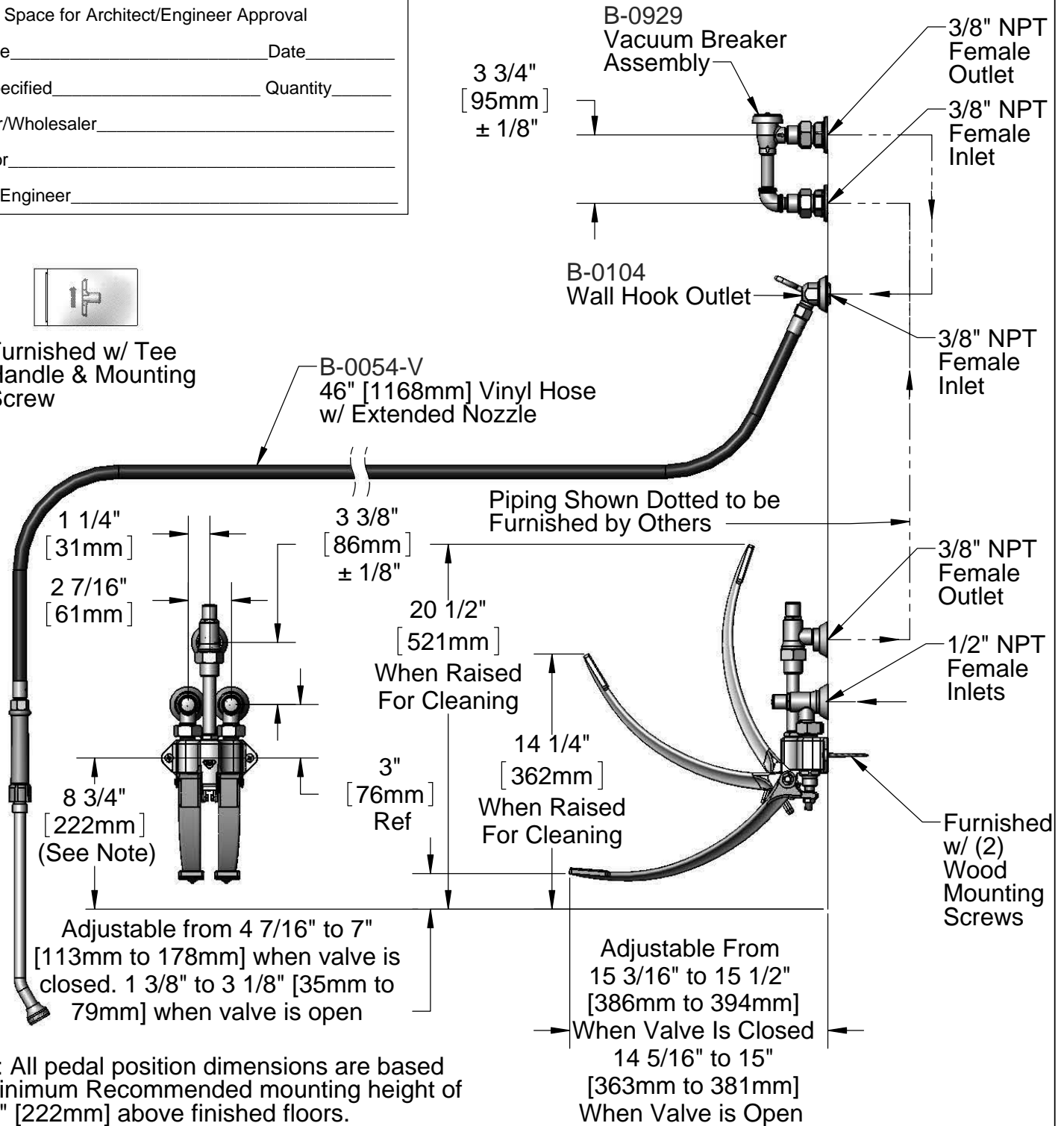
Customer/Wholesaler _____

Contractor _____

Architect/Engineer _____



Furnished w/ Tee Handle & Mounting Screw



Note: All pedal position dimensions are based on Minimum Recommended mounting height of 8 3/4" [222mm] above finished floors.

Product Specifications:
Bed Pan Washer w/ Foot Valve Control, Integral Loose Key Stops, Vacuum Breaker & Extended Nozzle w/ Vinyl Hose

Drawn KJG	Checked DMH	Approved JHB
---------------------	-----------------------	------------------------

Scale: 1:8	Date: 02/23/12
----------------------	--------------------------



T&S BRASS AND BRONZE WORKS, INC.

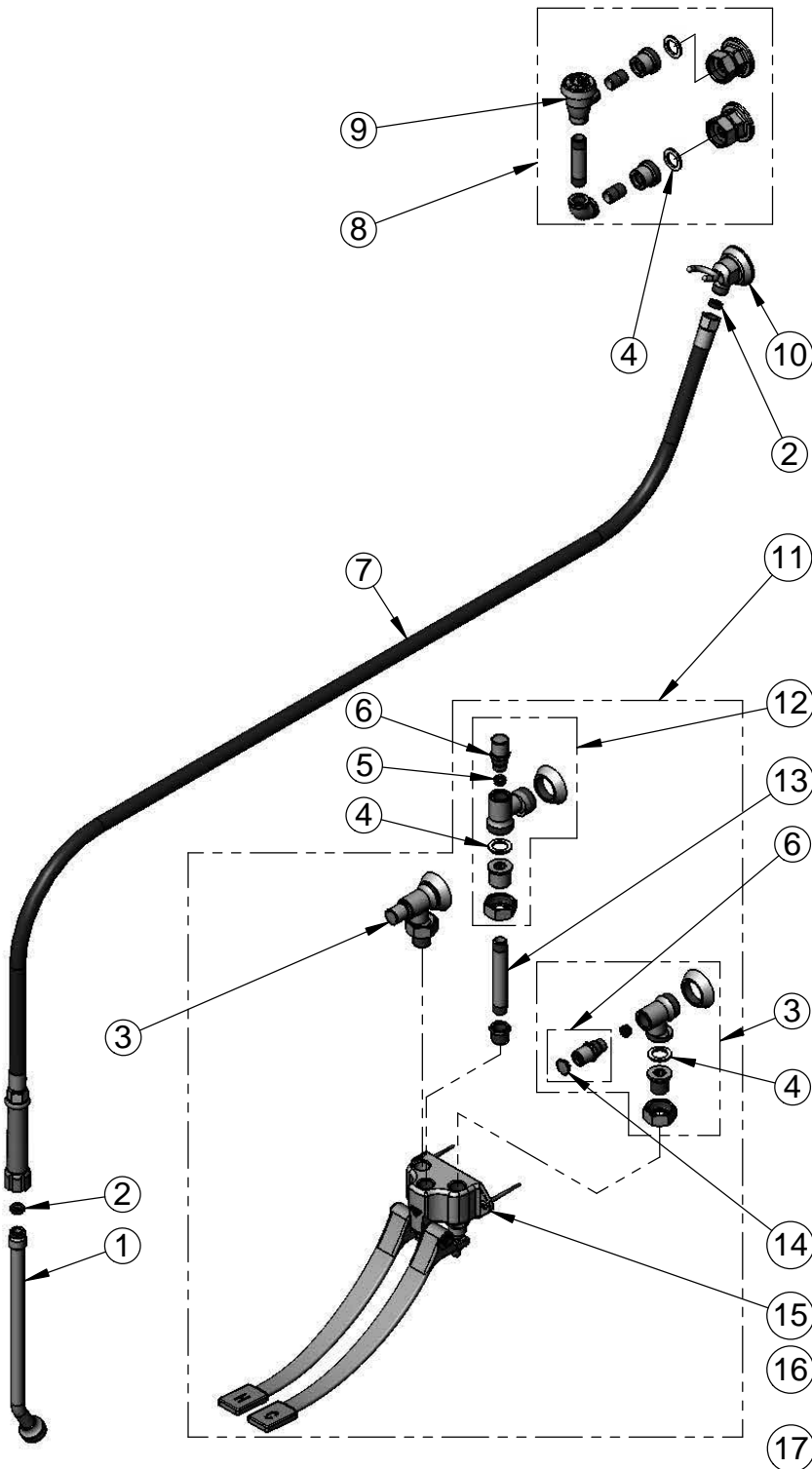
2 Saddleback Cove / P.O. Box 1088
Travelers Rest, SC 29690

Model No.

B-0676-54V

Item No.

Travelers Rest, SC: 800-476-4103 • Simi Valley, CA: 800-423-0150 • Fax: 864-834-3518 • www.tsbrass.com



ITEM NO.	SALES NO.	DESCRIPTION
1	002861-40	Bed Pan Spray Nozzle Assembly
2	010476-45	#27 Washer
3	B-1350	Loose Key 1/2" NPT Angle Stop Assembly w/ Tee Handle
4	001019-45	Coupling Nut Washer
5	000763-20	Seat
6	166A	Service Stop Spindle Assembly w/ Tee Handle & Screw
7	B-0054-V	54" Vinyl Hose Assembly
8	B-0929	Atmospheric Vacuum Breaker
9	B-0968	3/8" NPT Vacuum Breaker
10	B-0104	3/4-14UN Male Outlet Wall Hook
11	B-0504-01	Wall Mount Double Pedal Valve Assembly w/ Angle Stops
12	B-1355	Loose Key 3/8" NPT Angle Stop Assembly w/ Tee Handle & Screw
13	010092-40	Nipple, 3/8" NPT x 4 1/4" Long
14	001605-45	Cap
15	B-0504	Wall Mount Double Pedal Valve Assembly
16	002432-45	Screw, Tee Handle
17	001802-45	Handle, Supply Stop "T"

Product Specifications:

Bed Pan Washer w/ Foot Valve Control, Integral Loose Key Stops, Vacuum Breaker & Extended Nozzle w/ Vinyl Hose

Drawn

KJG

Checked

DMH

Approved

JHB

Scale:

NTS

Date:

02/23/12