



# T&S BRASS AND BRONZE WORKS, INC.

2 Saddleback Cove / P.O. Box 1088  
Travelers Rest, SC 29690

Model No.

**B-1225**

Item No.

Travelers Rest, SC: 800-476-4103 • Simi Valley, CA: 800-423-0150 • Fax: 864-834-3518 • www.tsbrass.com



**ADA Compliant**

This Space for Architect/Engineer Approval

Job Name \_\_\_\_\_ Date \_\_\_\_\_

Model Specified \_\_\_\_\_ Quantity \_\_\_\_\_

Customer/Wholesaler \_\_\_\_\_

Contractor \_\_\_\_\_

Architect/Engineer \_\_\_\_\_



Swivel Adapter Piece

Dark Blue Lever Arm

Torx Wrench Adjustable Flow Outlet

4 7/8" [124mm]

059X 6" Swing Nozzle w/ Stream Regulator Outlet

6" [152mm]

Eterna Cartridge & Lever Handle w/ Color Coded Index (For Water Flow to Gooseneck)

3 5/16" [84mm]

15 1/4" [387mm]

10" [254mm]

8 11/16" [221mm]

5 1/2" [139mm]

17 15/16" [455mm]

Ø 2" [51mm] Adjustable Flange

Mounting Surface

1/2" NPT Male Inlet

1 1/8" [29mm]

Rough-In Requirement:  
Ø 1" [25mm] Mounting Hole

### Product Specifications:

Combination 8 11/16" Clearance Glass & Pitcher Filler, Push Back Design, 6" Swing Nozzle, Independent Operation & 1/2" NPT Male Inlet

### Product Compliance:

ASME A112.18.1 / CSA B125.1  
NSF 61 - Section 9  
NSF 372 (Low Lead Content)  
ANSI A117.1 (ADA)



# T&S BRASS AND BRONZE WORKS, INC.

2 Saddleback Cove / P.O. Box 1088  
Travelers Rest, SC 29690

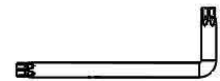
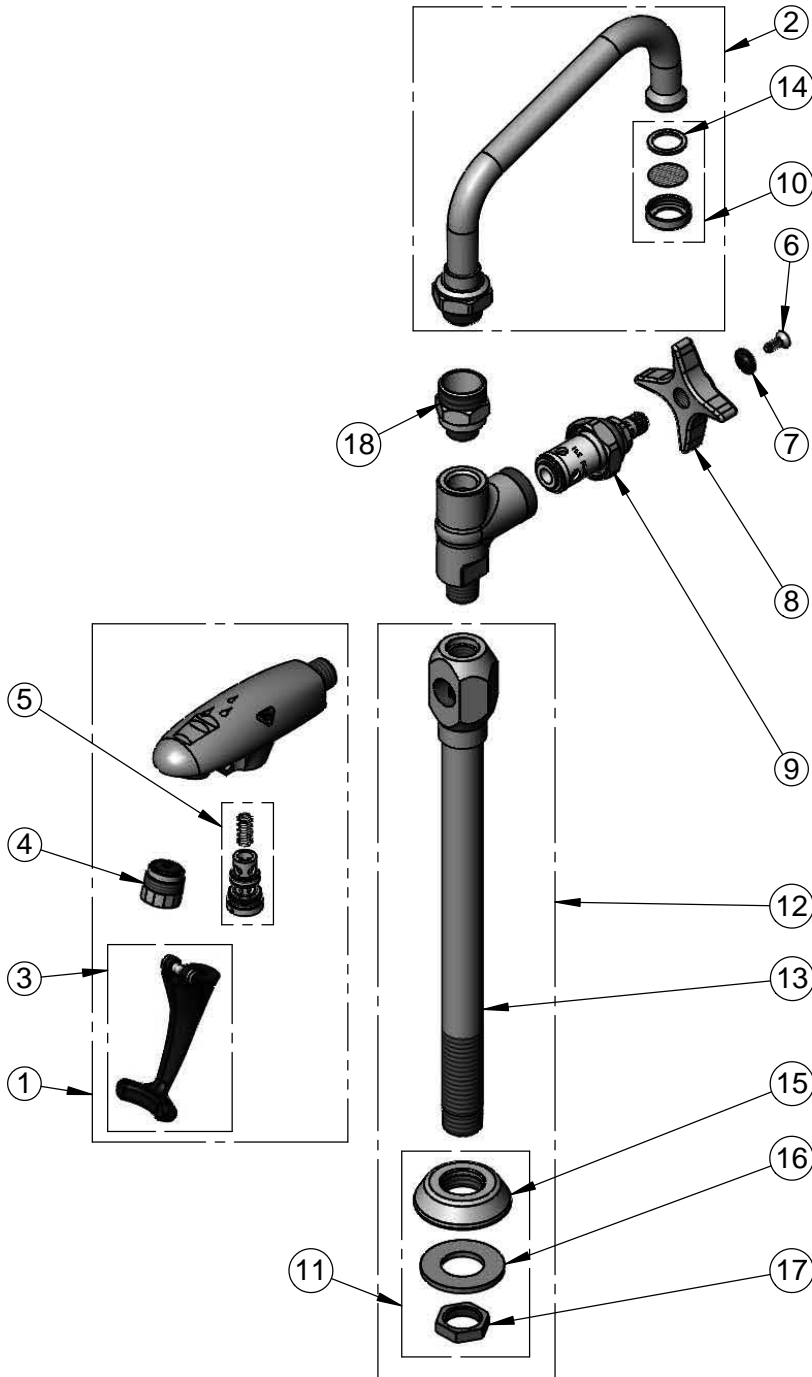
Model No.

**B-1225**

Item No.

Travelers Rest, SC: 800-476-4103 • Simi Valley, CA: 800-423-0150 • Fax: 864-834-3518 • www.tsbrass.com

ITEM NO.	SALES NO.	DESCRIPTION
1	B-1205	Wall Mount Glass Filler, 3/8" NPT
2	059X	6" Swing Nozzle
3	015550-45	Lever Arm Repair Kit
4	015588-40	Adjustable Outlet w/ Torx Wrench
5	015589-40	Valve
6	000922-45	Lever Handle Screw
7	001660-45	Blue Index-CW
8	002521-45	4-Arm Handle
9	005960-40	Eterna Cartridge, RTC
10	B-PT	Stream Regulator Outlet
11	016783-40	Adjustable Deck Flange Repair Kit
12	009654-40	B-1225 Pedestal
13	000743-40	B-1225 Soldered Pedestal
14	001048-45	Nozzle Tip Washer
15	000024-40	Glass Filler, Deck Mount, Pedestal Flange
16	001033-45	Glass Filler Pedestal, Deck Mount, Delrin Washer
17	002954-45	Shank Lock Nut
18	B-0412	Rigid to Swivel Adapter



016640-45  
T-45 Torx  
Wrench

**Product Specifications:**

Combination 8 11/16" Clearance Glass & Pitcher Filler, Push Back Design, 6" Swing Nozzle, Independent Operation & 1/2" NPT Male Inlet

**Product Compliance:**

ASME A112.18.1 / CSA B125.1  
NSF 61 - Section 9  
NSF 372 (Low Lead Content)  
ANSI A117.1 (ADA)