



**T&S BRASS AND BRONZE WORKS, INC.**  
 2 Saddleback Cove / P.O. Box 1088  
 Travelers Rest, SC 29690

Model No.  
**B-1434-RG**  
 Item No.

Travelers Rest, SC: 800-476-4103 • Simi Valley, CA: 800-423-0150 • Fax: 864-834-3518 • www.tsbrass.com

This Space for Architect/Engineer Approval

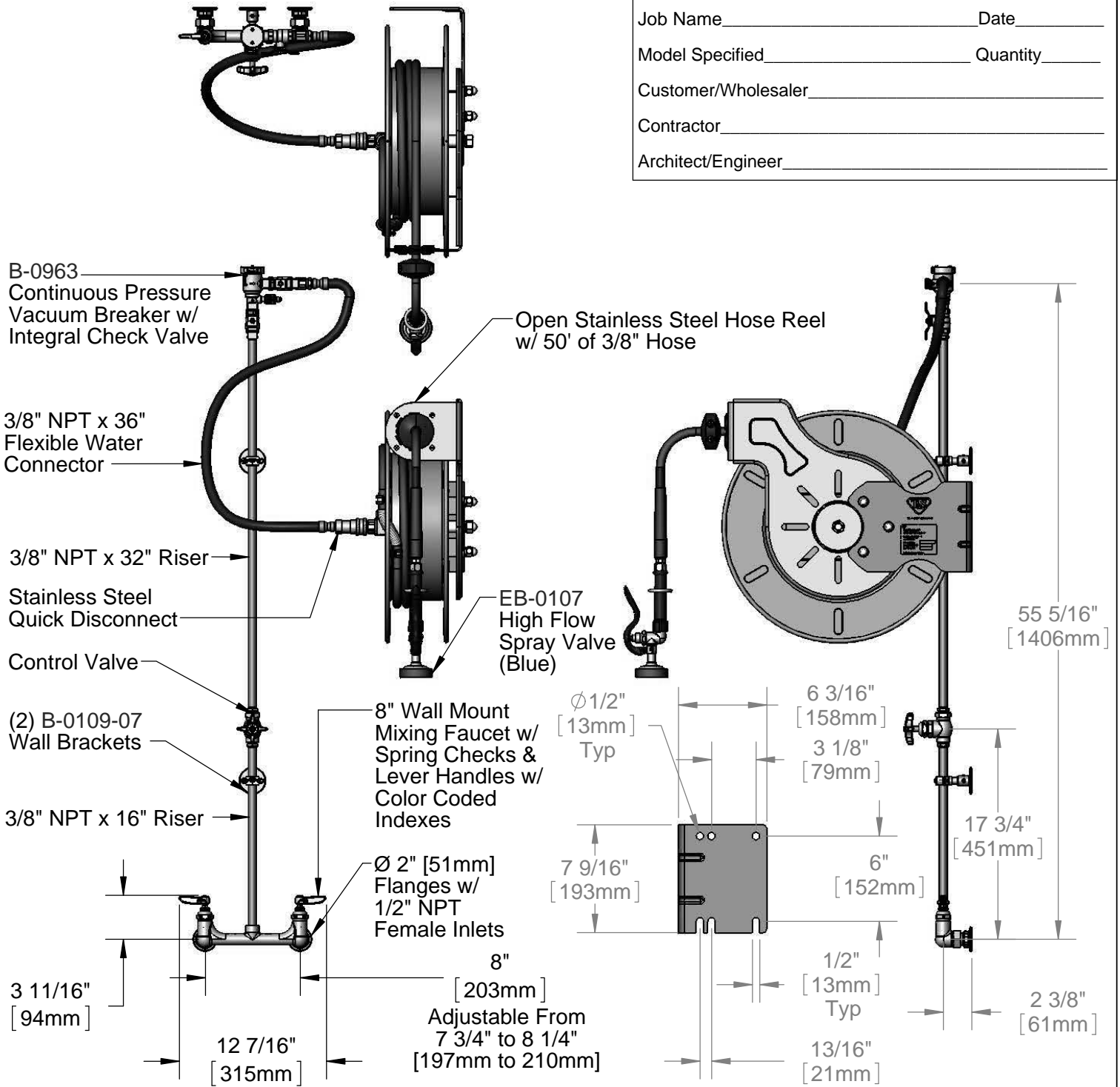
Job Name \_\_\_\_\_ Date \_\_\_\_\_

Model Specified \_\_\_\_\_ Quantity \_\_\_\_\_

Customer/Wholesaler \_\_\_\_\_

Contractor \_\_\_\_\_

Architect/Engineer \_\_\_\_\_



**Product Specifications:**  
 Open Stainless Steel Hose Reel w/ 50' of 3/8" Hose, High Flow Spray Valve (Blue), Vacuum Breaker, 3/8" NPT Flexible Water Connector, 8" Wall Mount Mixing Faucet & Control Valve

**Product Compliance:**  
 NSF 61 Exempt (Non-Potable)  
 EPA Act 2005 Non-Compliant (PRSV)  
 ASSE 1056 (VB)



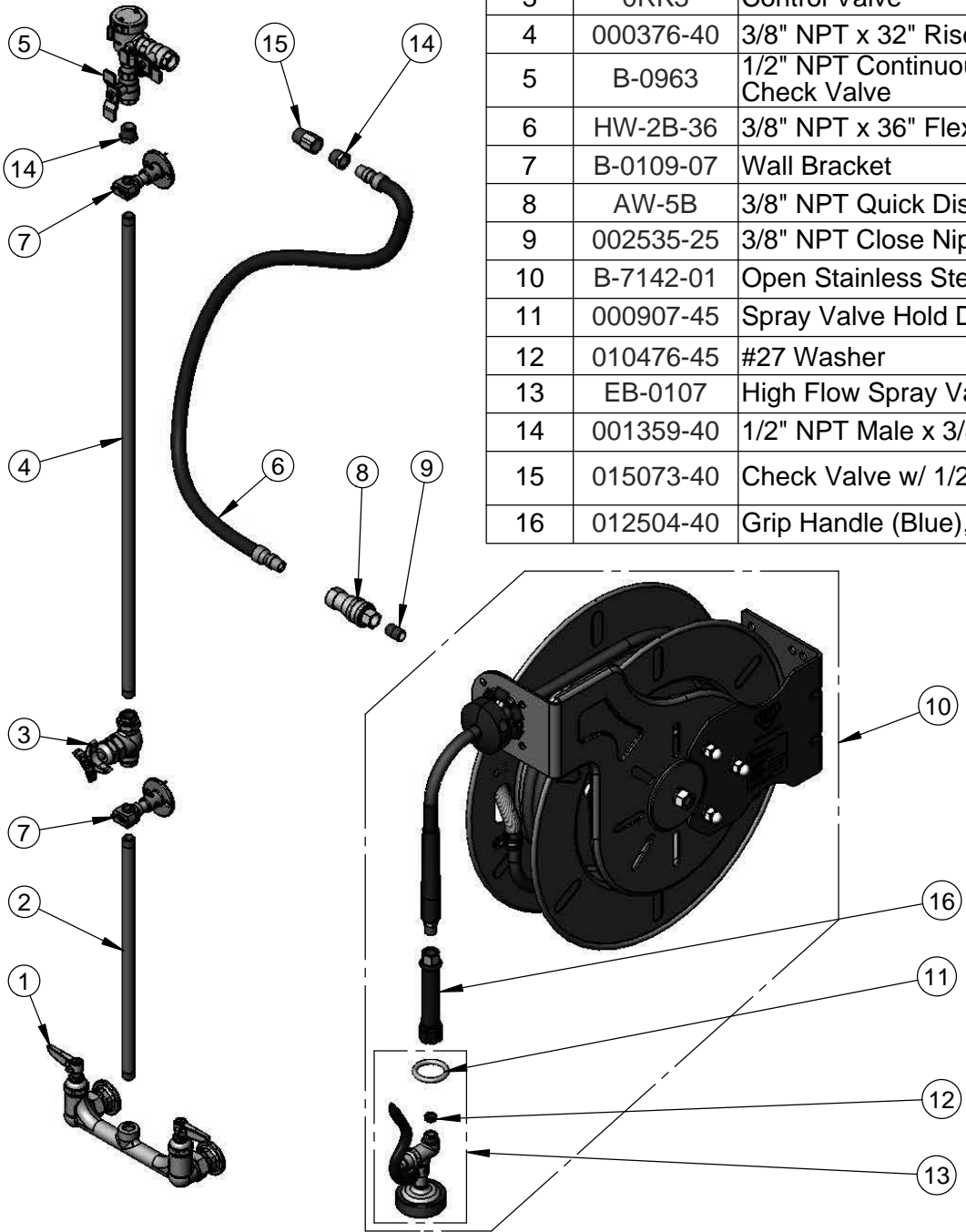
**T&S BRASS AND BRONZE WORKS, INC.**  
 2 Saddleback Cove / P.O. Box 1088  
 Travelers Rest, SC 29690

Model No.  
**B-1434-RG**

Item No.

Travelers Rest, SC: 800-476-4103 • Simi Valley, CA: 800-423-0150 • Fax: 864-834-3518 • www.tsbrass.com

| ITEM NO. | SALES NO. | DESCRIPTION   |
|----------|-----------|---|
| 1        | 002832-40 | 8" Wall Mount Mixing Faucet                             |
| 2        | 000368-40 | 3/8" NPT x 16" Riser                                    |
| 3        | 0RK3      | Control Valve   |
| 4        | 000376-40 | 3/8" NPT x 32" Riser                                    |
| 5        | B-0963    | 1/2" NPT Continuous Pressure VB w/ Integral Check Valve |
| 6        | HW-2B-36  | 3/8" NPT x 36" Flexible Water Hose                      |
| 7        | B-0109-07 | Wall Bracket  |
| 8        | AW-5B     | 3/8" NPT Quick Disconnect                               |
| 9        | 002535-25 | 3/8" NPT Close Nipple                                   |
| 10       | B-7142-01 | Open Stainless Steel Reel w/ 50' of 3/8" Hose           |
| 11       | 000907-45 | Spray Valve Hold Down Ring                              |
| 12       | 010476-45 | #27 Washer  |
| 13       | EB-0107   | High Flow Spray Valve (Blue)                            |
| 14       | 001359-40 | 1/2" NPT Male x 3/8" NPT Female Hex Bushing             |
| 15       | 015073-40 | Check Valve w/ 1/2" NPT Adapter                         |
| 16       | 012504-40 | Grip Handle (Blue), 3/8" NPT                            |



**Product Specifications:**  
 Open Stainless Steel Hose Reel w/ 50' of 3/8" Hose, High Flow Spray Valve (Blue), Vacuum Breaker, 3/8" NPT Flexible Water Connector, 8" Wall Mount Mixing Faucet & Control Valve

**Product Compliance:**  
 NSF 61 Exempt (Non-Potable)  
 EPA Act 2005 Non-Compliant (PRSV)  
 ASSE 1056 (VB)