



T&S BRASS AND BRONZE WORKS, INC.

2 Saddleback Cove / P.O. Box 1088
Travelers Rest, SC 29690

Model No.

B-2308

Item No.

Travelers Rest, SC: 800-476-4103 • Simi Valley, CA: 800-423-0150 • Fax: 864-834-3518 • www.tsbrass.com



ADA Compliant

This Space for Architect/Engineer Approval

Job Name _____ Date _____

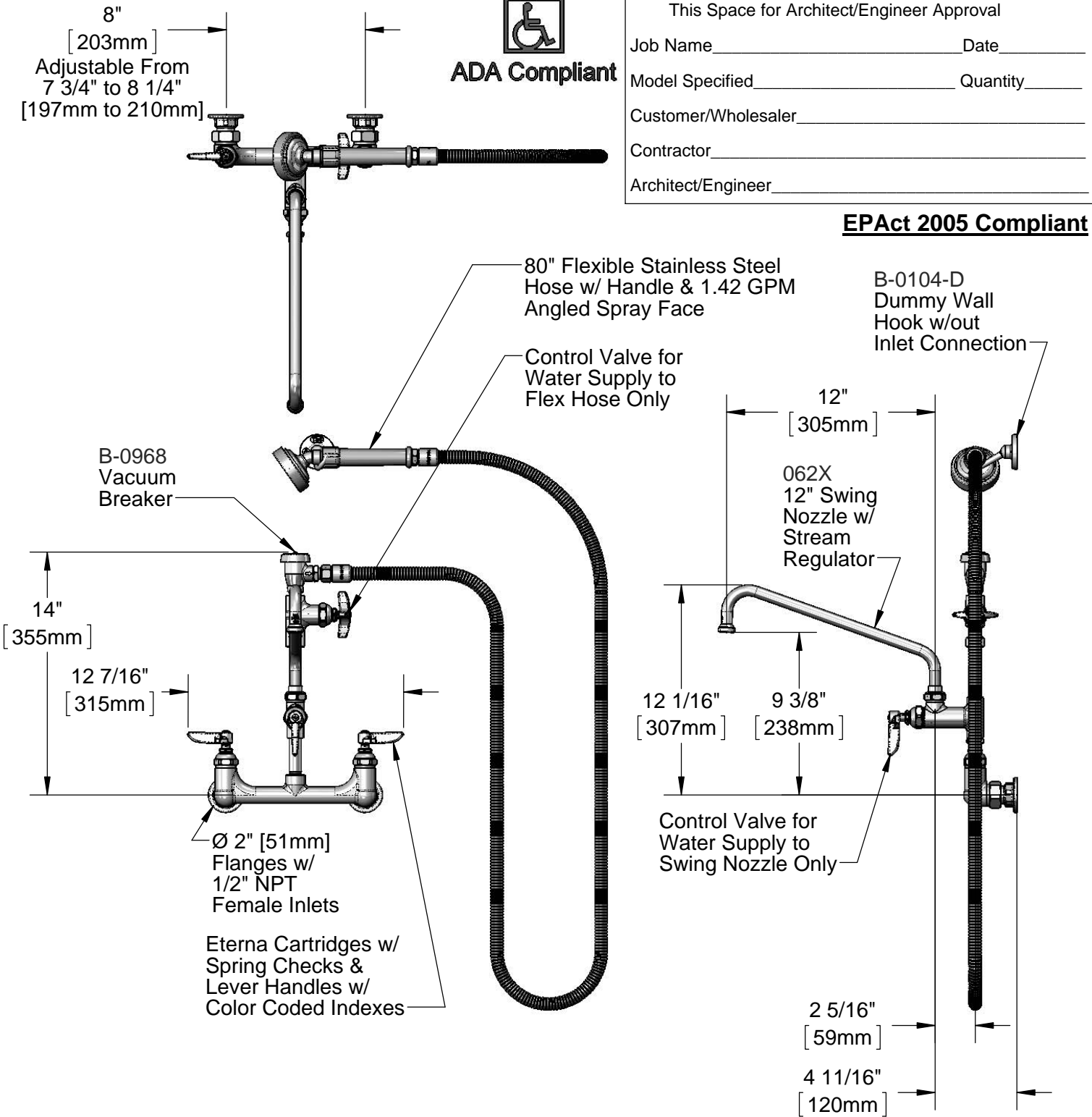
Model Specified _____ Quantity _____

Customer/Wholesaler _____

Contractor _____

Architect/Engineer _____

EPAct 2005 Compliant



Product Specifications:
8" Wall Mount Mixing Faucet, Eterna Cartridges w/ Spring Checks, Add-On Faucet w/ 12" Swing Nozzle, Control Valve, Vacuum Breaker, 80" Flexible Stainless Steel Hose w/ 1.42 GPM Angled Spray Face & 1/2" NPT Female Inlets

Drawn KJG	Checked DMH	Approved JHB
Scale: 1:8		Date: 08/16/13



T&S BRASS AND BRONZE WORKS, INC.

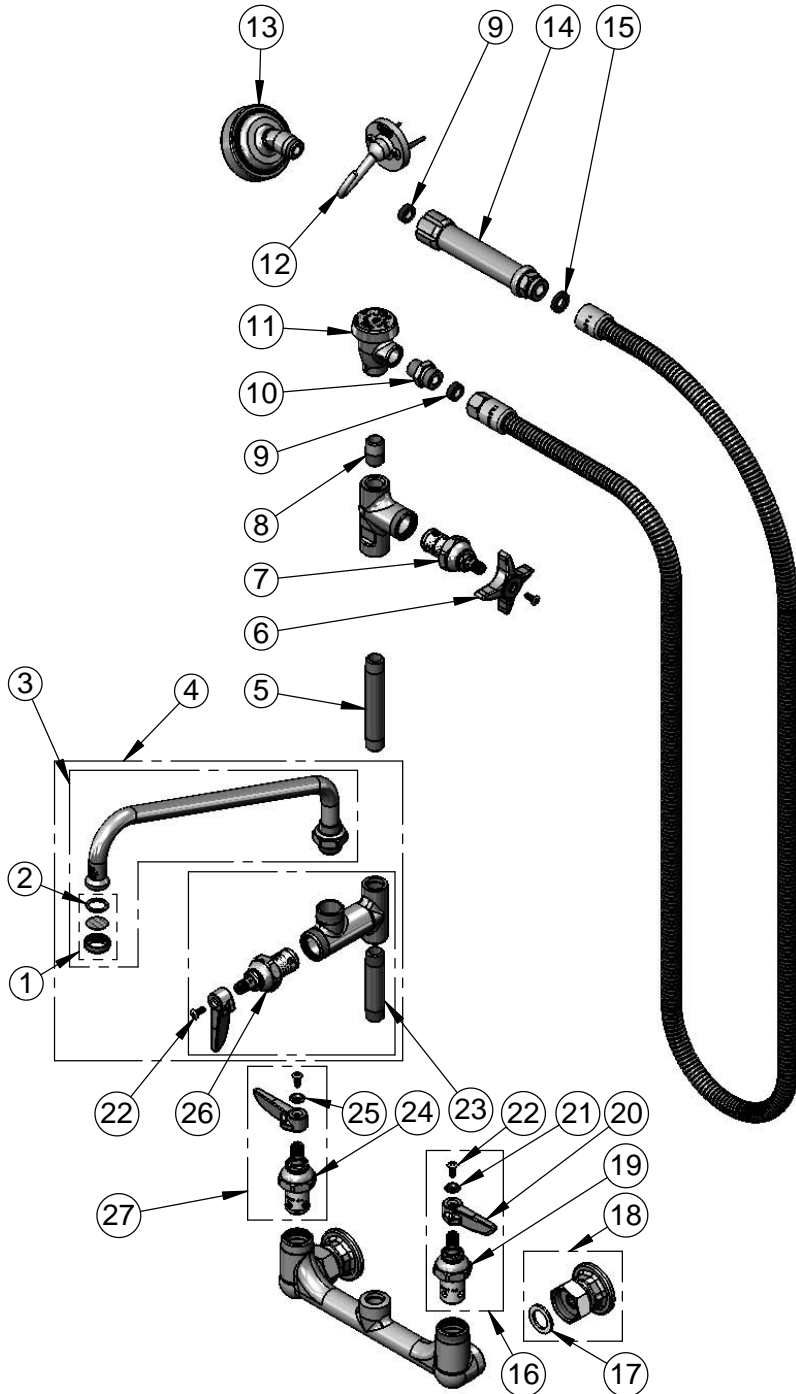
2 Saddleback Cove / P.O. Box 1088
Travelers Rest, SC 29690

Model No.

B-2308

Item No.

Travelers Rest, SC: 800-476-4103 • Simi Valley, CA: 800-423-0150 • Fax: 864-834-3518 • www.tsbrass.com



ITEM NO.	SALES NO.	DESCRIPTION
1	B-PT	Stream Regulator Outlet
2	001048-45	Nozzle Tip Washer
3	062X	12" Swing Nozzle w/ Stream Regulator Outlet
4	B-0156	Add-On Faucet w/ 12" Swing Nozzle
5	000360-40	Nipple, 3/8" NPT x 4"
6	002521-45	4-Arm Handle
7	005960-40	Eterna Cartridge, RTC
8	002535-25	3/8" Close Nipple
9	010476-45	#27 Washer
10	053A	Adapter, 3/8" NPT x 3/4"-14 UN
11	B-0968	3/8" NPT Vacuum Breaker
12	B-0104-D	Dummy Wall Hook
13	005969-40	1.42 GPM Angled Spray Face
14	002987-40	Grip Handle
15	001014-45	Washer, B-0100 Hose Barrel
16	002711-40	Eterna Cartridge, LTC w/ Spring Check, Lever Handle, Index & Screw
17	001019-45	Coupling Nut Washer
18	00AA	1/2" NPT Female Eccentric Flange
19	012442-40	Eterna Cartridge, LTC w/ Spring Check
20	001638-45	Lever Handle
21	001660-45	Blue Index-CW
22	000922-45	Lever Handle Screw
23	000358-40	Nipple, 3/8" NPT x 3"
24	012443-40	Eterna Cartridge, RTC w/ Spring Check
25	001661-45	Red Index-HW
26	005960-40QT	1/4 Turn Eterna Cartridge, RTC
27	002712-40	Eterna Cartridge, RTC w/ Spring Check, Lever Handle, Index & Screw

Product Specifications:

8" Wall Mount Mixing Faucet, Eterna Cartridges w/ Spring Checks, Add-On Faucet w/ 12" Swing Nozzle, Control Valve, Vacuum Breaker, 80" Flexible Stainless Steel Hose w/ 1.42 GPM Angled Spray Face & 1/2" NPT Female Inlets

Drawn

KJG

Checked

DMH

Approved

JHB

Scale:

NTS

Date:

08/16/13