



T&S BRASS AND BRONZE WORKS, INC.

2 Saddleback Cove / P.O. Box 1088
Travelers Rest, SC 29690

Model No.

BL-5700-09

Item No.

Travelers Rest, SC: 800-476-4103 • Simi Valley, CA: 800-423-0150 • Fax: 864-834-3518 • www.tsbrass.com

This Space for Architect/Engineer Approval

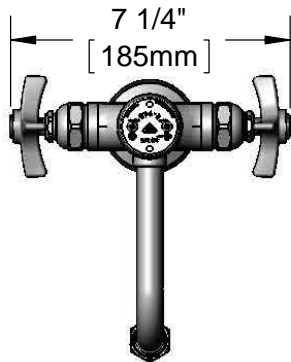
Job Name _____ Date _____

Model Specified _____ Quantity _____

Customer/Wholesaler _____

Contractor _____

Architect/Engineer _____



ADA Compliant

Swing Nozzle w/
Vacuum Breaker &
B-0198
Serrated Tip Outlet

B-0968
3/8" NPT
Vacuum
Breaker

Eterna Cartridges
& 4-Arm Handles
w/ Color Coded
Indexes

3 5/8"
[93mm]

Swivel Joint

Rigid to
Swivel
Adapter

12 5/16"
[313mm]

3/8" X 5"
Riser

5 11/16"
[144mm]

Ø 2 1/4" [57mm]
Flange w/ Ø 1 1/8"
[29mm] Shank

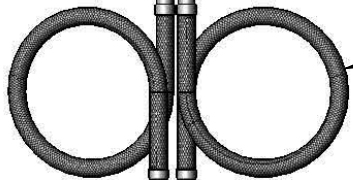
6 1/16"
[154mm]

Mounting
Surface

Deck Gasket

1 3/8"
[34mm]

Maximum
Thickness



18" Flexible
Stainless Steel
Supply Hoses

Compression Fittings
for 5/8" O.D. Copper Tubing
(Remove Compression Nut
for 1/2" NPSM Male)

Rough-In Requirement:
Ø 1 1/2" [38mm] Mounting Hole

Product Specifications:

Single Hole Deck Mount Laboratory Mixing Faucet, Eterna Cartridges, 4-Arm Handles, Vacuum Breaker Swing Nozzle, Serrated Tip & 18" Flexible Stainless Steel Supply Hoses w/ 1/2" NPSM Male Inlets

Product Compliance:

ASME A112.18.1 / CSA B125.1
NSF 61 Exempt (Non-Potable)
ANSI A117.1 (ADA)
ASSE 1001 (VB)



T&S BRASS AND BRONZE WORKS, INC.

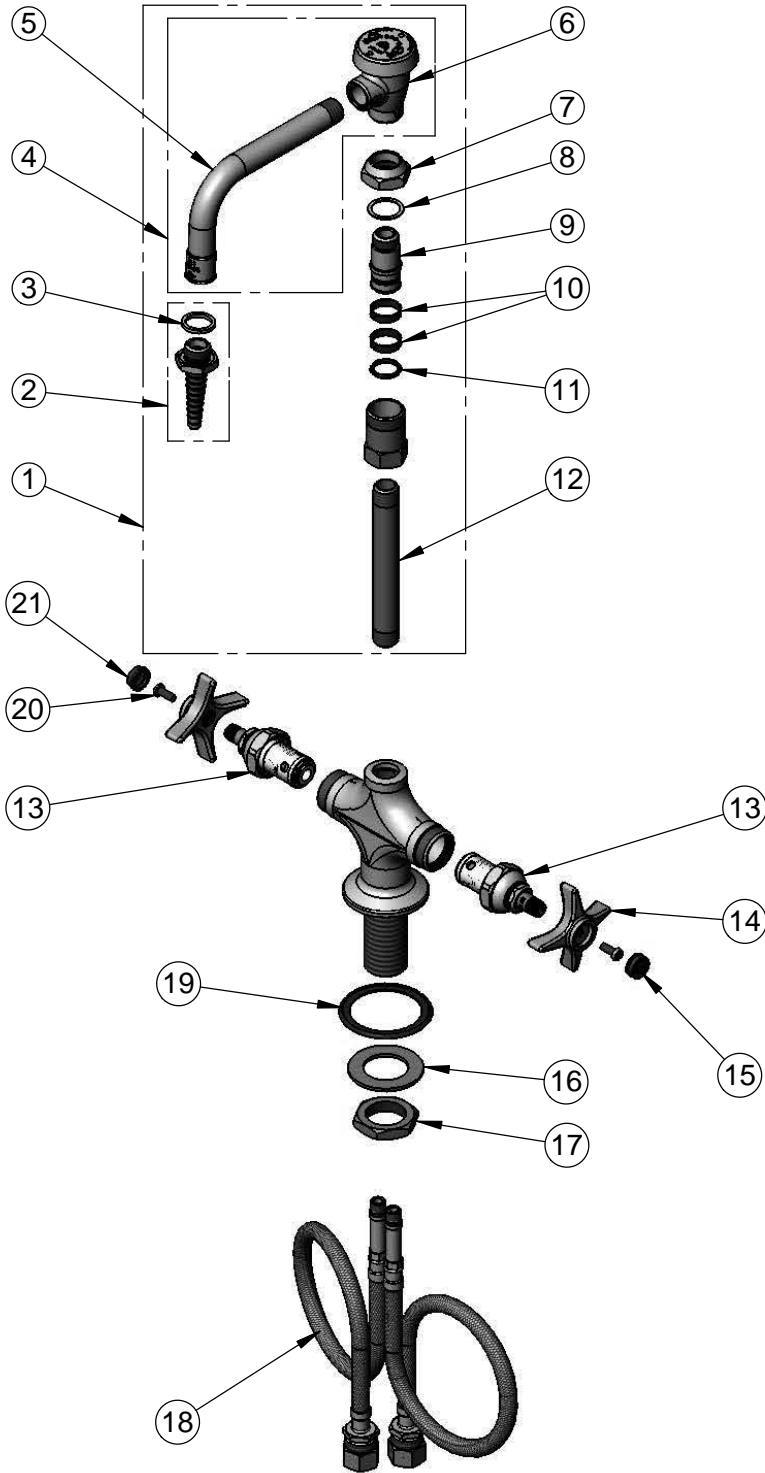
2 Saddleback Cove / P.O. Box 1088
Travelers Rest, SC 29690

Model No.

BL-5700-09

Item No.

Travelers Rest, SC: 800-476-4103 • Simi Valley, CA: 800-423-0150 • Fax: 864-834-3518 • www.tsbrass.com



ITEM NO.	SALES NO.	DESCRIPTION
1	BL-5560-02	Swing Nozzle w/ Vacuum Breaker & 3/8" NPT x 5" Nipple Inlet
2	B-0198	Serrated Tip w/ Washer
3	001051-45	Washer
4	007283-40	Nozzle w/ Vacuum Breaker Only
5	000387-40	Nozzle
6	B-0968	3/8" NPT Vacuum Breaker
7	000711-40	Swivel Nut
8	009E	Plastic Washer
9	000843-25	Swivel Body
10	011429-45	Swivel Sleeves (2)
11	001074-45	O-Ring
12	000361-40	3/8" NPT x 5" Riser
13	005960-40	Eterna Cartridge, RTC
14	000059-40	4-Arm Lab Handle
15	001191-45	Green Index - CW
16	002290-45	Lock Washer
17	000965-45	Lock Nut
18	012534-45	Flexible Connector Hose (2)
19	145L	Black Plastic Deck Gasket
20	000925-45	Lab Handle Screw
21	001194-45	Red Index - HW

Product Specifications:

Single Hole Deck Mount Laboratory Mixing Faucet, Eterna Cartridges, 4-Arm Handles, Vacuum Breaker Swing Nozzle, Serrated Tip & 18" Flexible Stainless Steel Supply Hoses w/ 1/2" NPSM Male Inlets

Product Compliance:

ASME A112.18.1 / CSA B125.1
NSF 61 Exempt (Non-Potable)
ANSI A117.1 (ADA)
ASSE 1001 (VB)