



**T&S BRASS AND BRONZE WORKS, INC.**

2 Saddleback Cove / P.O. Box 1088  
Travelers Rest, SC 29690

Model No.

**EB-0113-BJ**

Item No.

Travelers Rest, SC: 800-476-4103 • Simi Valley, CA: 800-423-0150 • Fax: 864-834-3518 • www.tsbrass.com

**EPAct 2005 Compliant**

This Space for Architect/Engineer Approval

Job Name \_\_\_\_\_ Date \_\_\_\_\_

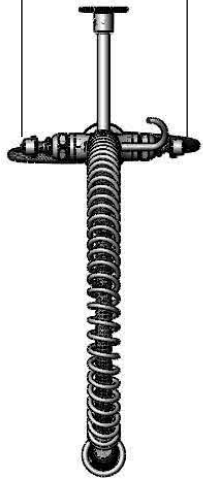
Model Specified \_\_\_\_\_ Quantity \_\_\_\_\_

Customer/Wholesaler \_\_\_\_\_

Contractor \_\_\_\_\_

Architect/Engineer \_\_\_\_\_

7 3/4"  
[197mm]



44" Flex Hose w/  
Spring & Spray Valve

Items Not Shown  
for Clarity

Finger Hook

3/8" NPT x 24" Riser

EB-0107-J  
Spray Valve  
1.07 GPM

EasyInstall  
Lock Nut & Bushing

Eterna Cartridges w/  
Spring Checks &  
Lever Handles w/  
Color Coded Indexes

Mounting Surface

18" Long Flexible  
Stainless Steel  
Supply Hoses

Compression Fittings  
for 5/8" O.D. Copper Tubing  
(Remove Compression Nut  
for 1/2" NPSM Male)

B-0109-01  
Wall Bracket

42 3/16"  
[1072mm]

11 5/8"  
[295mm]

14 1/8"  
[358mm]

1 1/4" [32mm]  
Max Thickness

Ø 2 1/4"  
[57mm]

Rough-In Requirement:  
Ø 1 1/2" [Ø 38mm] Hole

Product Specifications:

EasyInstall Pre-Rinse Unit:  
Single Deck Mount Faucet, Eterna w/ Spring Checks, 24" Riser,  
Overhead Spring, 44" Flex Hose, 6" Wall Bracket,  
EB-0107-J Spray Valve, & Flex Supply Hoses

Drawn

JRM

Checked

DHL

Approved

JHB

Scale:

1:9

Date:

05/23/12



# T&S BRASS AND BRONZE WORKS, INC.

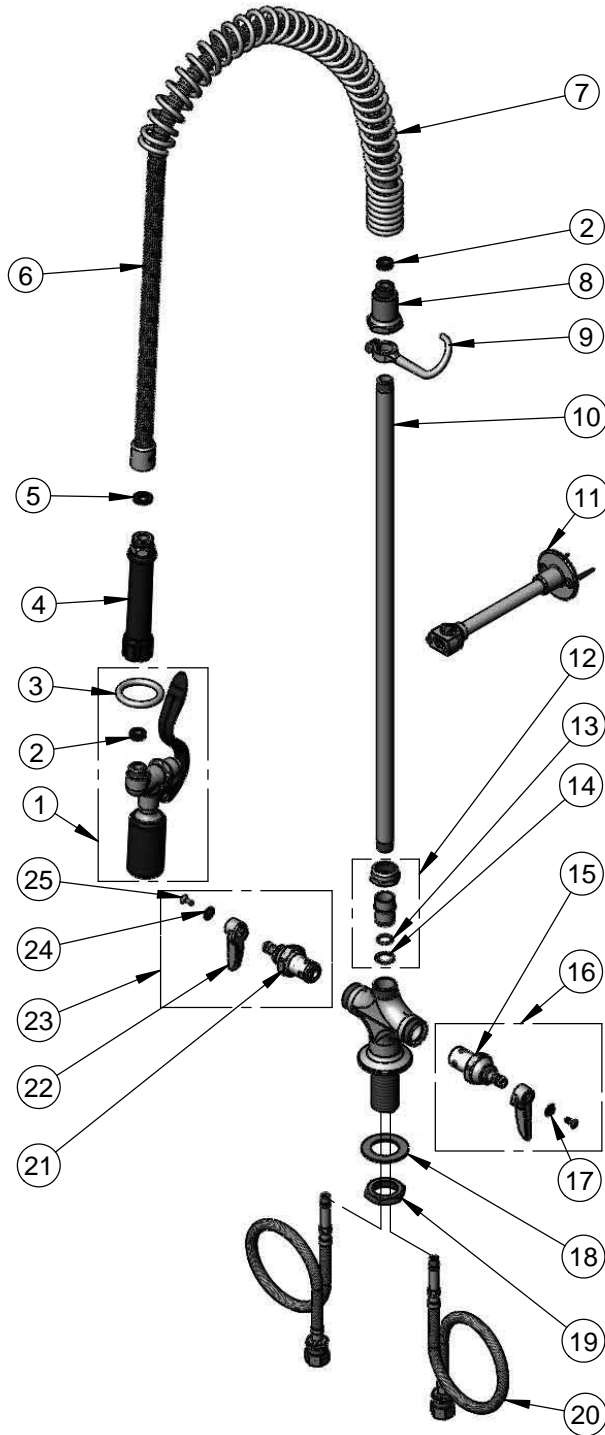
2 Saddleback Cove / P.O. Box 1088  
Travelers Rest, SC 29690

Model No.

**EB-0113-BJ**

Item No.

Travelers Rest, SC: 800-476-4103 • Simi Valley, CA: 800-423-0150 • Fax: 864-834-3518 • www.tsbrass.com



ITEM NO.	SALES NO.	DESCRIPTION
1	EB-0107-J	1.07 GPM Blue Spray Valve
2	010476-45	#27 Washer
3	000907-45	Spray Valve Hold Down Ring
4	011482-40	Blue Grip Handle
5	001014-45	Washer, B-0100 Hose Barrel
6	B-0044-H2A	44" Flex Hose Assembly Less Handle
7	000888-45	EasyInstall Overhead Spring
8	000821-40	Spring Body
9	004R	Finger Hook Assembly
10	000372-40	3/8" x 24" Riser
11	B-0109-01	B-109 Wall Bracket Body
12	EZ-K	EasyInstall Kit: Bushing, O-Ring, Lock Washer & Loctite 222
13	001065-45	O-Ring
14	014200-45	Star Washer, Anti-Rotation
15	012442-40	Eterna Cartridge, LTC w/ Spring Check
16	002711-40	Eterna Cartridge, LTC w/ Spring Check, Handle, Index & Screw
17	001660-45	Blue Index-CW
18	002290-45	Lock Washer
19	000965-45	Lock Nut
20	012534-45	Flexible Connector Hose (2)
21	012443-40	Eterna Cartridge, RTC w/ Spring Check
22	001638-45	Lever Handle
23	002712-40	Eterna Cartridge, RTC w/ Spring Check, Handle, Index & Screw
24	001661-45	Red Index-HW
25	000922-45	Lever Handle Screw

**Product Specifications:**

EasyInstall Pre-Rinse Unit:  
Single Deck Mount Faucet, Eterna w/ Spring Checks, 24" Riser,  
Overhead Spring, 44" Flex Hose, 6" Wall Bracket,  
EB-0107-J Spray Valve, & Flex Supply Hoses

Drawn	Checked	Approved
<b>JRM</b>	<b>DHL</b>	<b>JHB</b>
Scale:		Date:
<b>NTS</b>		<b>05/23/12</b>