



T&S BRASS AND BRONZE WORKS, INC.

2 Saddleback Cove / P.O. Box 1088
Travelers Rest, SC 29690



REG. #A2601
ISO #9001

Model No.

MPZ-2DLN-06-CRP

Item No.

Travelers Rest, SC: 800-476-4103 Simi Valley, CA: 800-423-0150 Fax: 864-834-3518 www.tsbrass.com

This Space for Architect/Engineer Approval

Job Name _____ Date _____

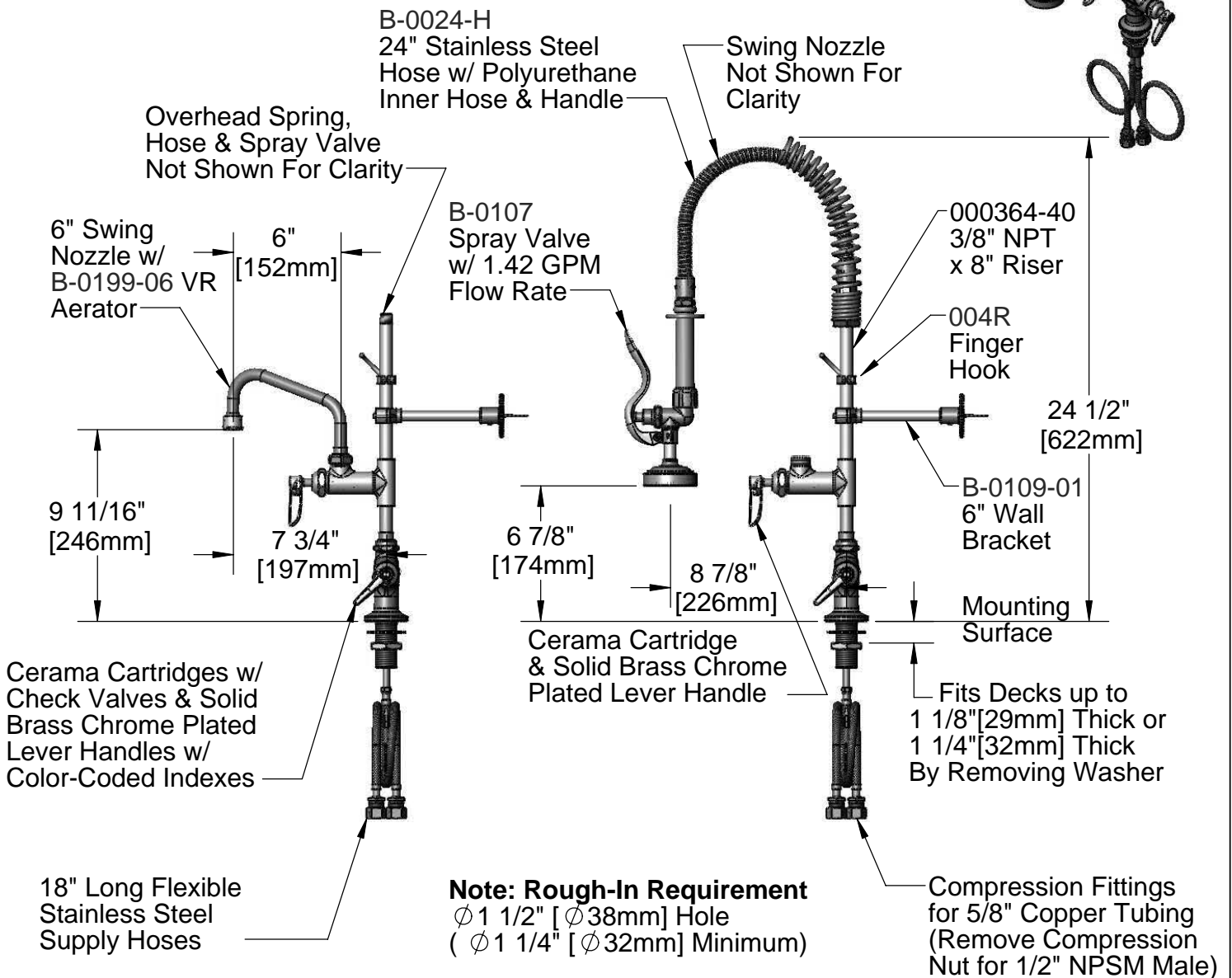
Model Specified _____ Quantity _____

Customer/Wholesaler _____

Contractor _____

Architect/Engineer _____

EPAct2005 Compliant
For Commercial Use Only



Product Specifications:
Easy Install Pre-Rinse Unit: Single Deck Mount Base Mixing Faucet,
Add-On Faucet, 6" Swing Nozzle w/ VR 2.2 GPM Aerator, Compact
Spring & Flex Hose, B-0107 Spray Valve, 6" Wall Bracket, Solid Brass
Chrome Plated Lever Handles w/ VR Screws & Ceramas

Drawn DHL	Checked KJG	Approved JHB
Scale: 1:8		Date: 05/11/09



T&S BRASS AND BRONZE WORKS, INC.

2 Saddleback Cove / P.O. Box 1088
Travelers Rest, SC 29690



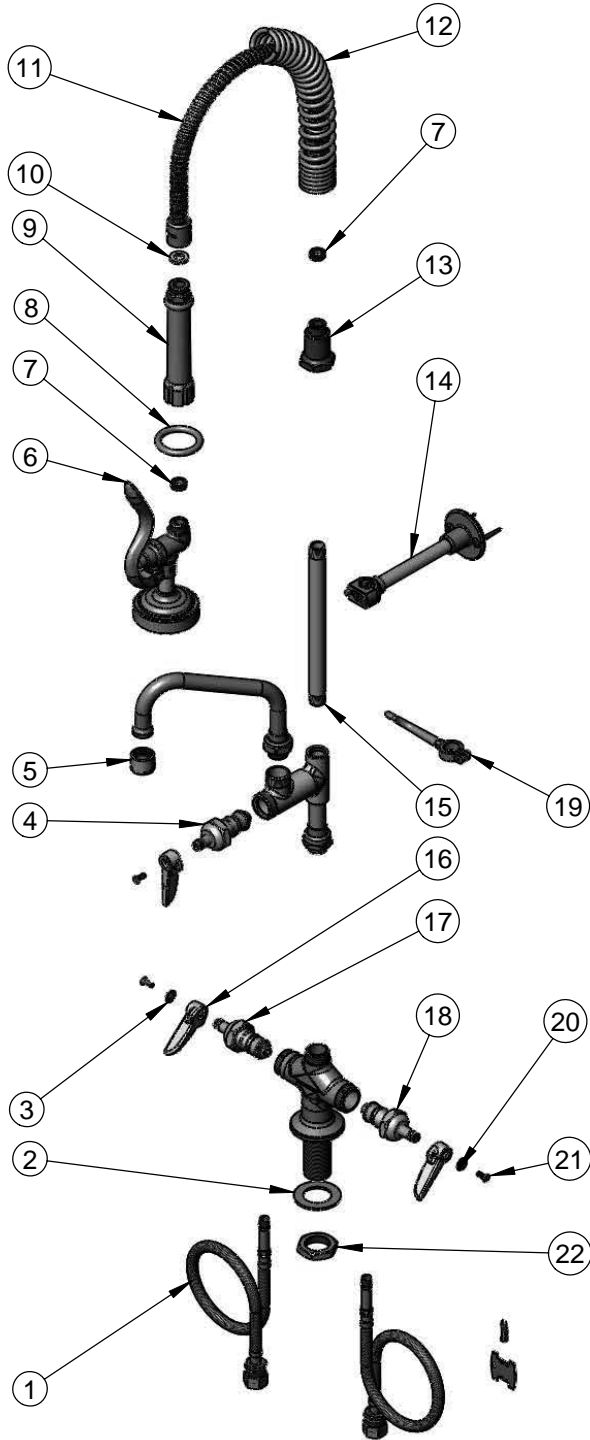
REG. #A2601
ISO #9001

Model No.



MPZ-2DLN-06-CRP

Item No.

Travelers Rest, SC: 800-476-4103 Simi Valley, CA: 800-423-0150 Fax: 864-834-3518 www.tsbrass.com



ITEM NO.	SALES NO.	DESCRIPTION
1	012534-45	Flexible Connector Hose
2	002290-45	Lock Washer
3	001661-45	Red Index-HW
4	011278-25	Ceramic Cartridge RTC
5	B-0199-06	VR Aerator w/ Key
6	B-0107	1.42 GPM Spray Valve Assembly
7	010476-45	#27 Washer
8	000907-45	Spray Valve Hold Down Ring
9	002987-40	Handle Grip
10	001014-45	Washer, B-0100 Hose Barrel
11	B-0024-H2A	24" Flex Hose Less Handle
12	016795-45	Compact Spring
13	000821-40	Spring Body
14	B-0109-01	Bracket Assembly, 6" Wall
15	000364-40	3/8" x 8" Riser
16	010027-40	Solid Brass Chrome Plated Lever Handle
17	012394-25	Ceramic Cartridge, RTC w/ Check Valve
18	012395-25	Ceramic Cartridge, LTC w/ Check Valve
19	004R	Finger Hook Assembly
20	001660-45	Blue Index-CW
21	011755-45	VR Screw
22	000965-45	Lock Nut

 014075-45 Handle Vandal Resistant Spanner Bit Supplied	 Q015425-45 Aerator Vandal Resistant Key Supplied
--	--

Product Specifications:

Easy Install Pre-Rinse Unit: Single Deck Mount Base Mixing Faucet, Add-On Faucet, 6" Swing Nozzle w/ VR 2.2 GPM Aerator, Compact Spring & Flex Hose, B-0107 Spray Valve, 6" Wall Bracket, Solid Brass Chrome Plated Lever Handles w/ VR Screws & Ceramas

Drawn DHL	Checked KJG	Approved JHB
Scale: NTS		Date: 05/11/09