



Turbo Air Speed up the Pace of Innovation

CAUTION!
PLEASE KEEP POWER
SWITCH ON BEFORE
OPERATING THIS EQUIPMENT

Worktop Refrigerator Service Manual

Please read this manual completely before attempting to install or operate this equipment!

TWR-28SD
TWR-36SD
TWR-48SD
TWR-60SD
TWR-72SD

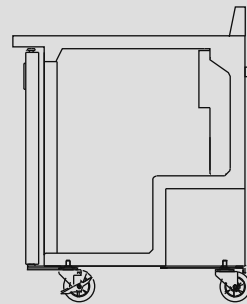
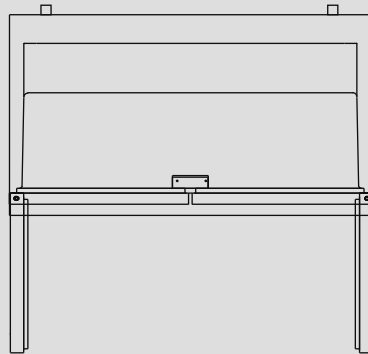


TABLE OF CONTENTS

1. EXPLODED VIEW

1-1. TWR-28SD EXPLODED VIEW

1-2. TWR-48SD EXPLODED VIEW

1-3. TWR-60SD EXPLODED VIEW

1-4. TWR-72SD EXPLODED VIEW

2. WIRING DIAGRAMS

2-1. TWR-28SD/ TWR-36SD/ TWR-48SD/ TWR-60SD/ TWR-72SD

3. MAIN COMPONENTS

4. TEMPERATURE CONTROL INSTRUCTION

5. PARTS LIST

6. REPLACEMENT OF MAIN COMPONENTS

6-1. REPLACING DOOR

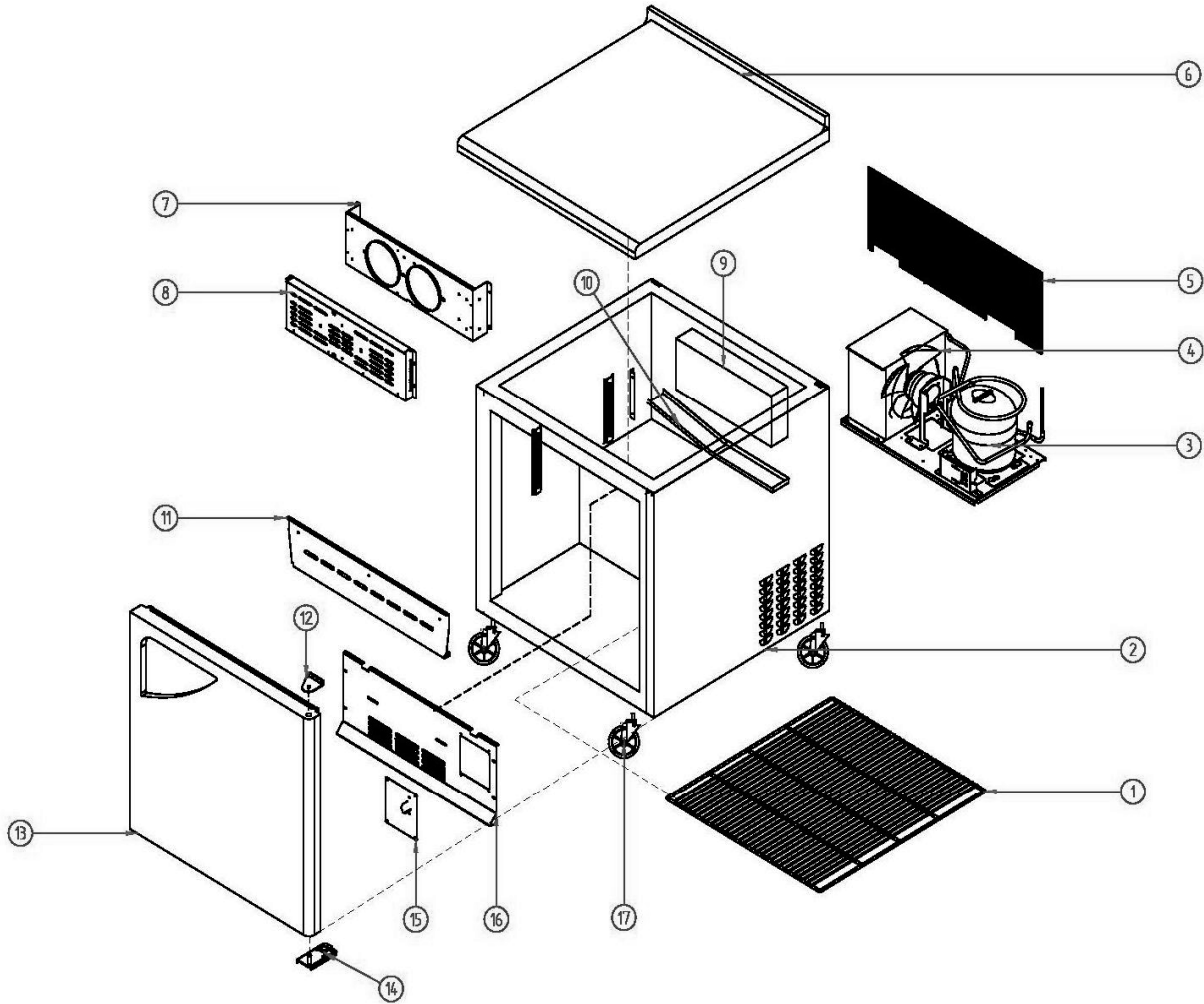
6-2. REFRIGERATION COMPARTMENT PARTS

6-3. COMPRESSOR COMPARTMENT PARTS

6-4. REPLACING THE EVAPORATOR & EVAPORATOR FAN MOTOR

1. EXPLODED VIEW

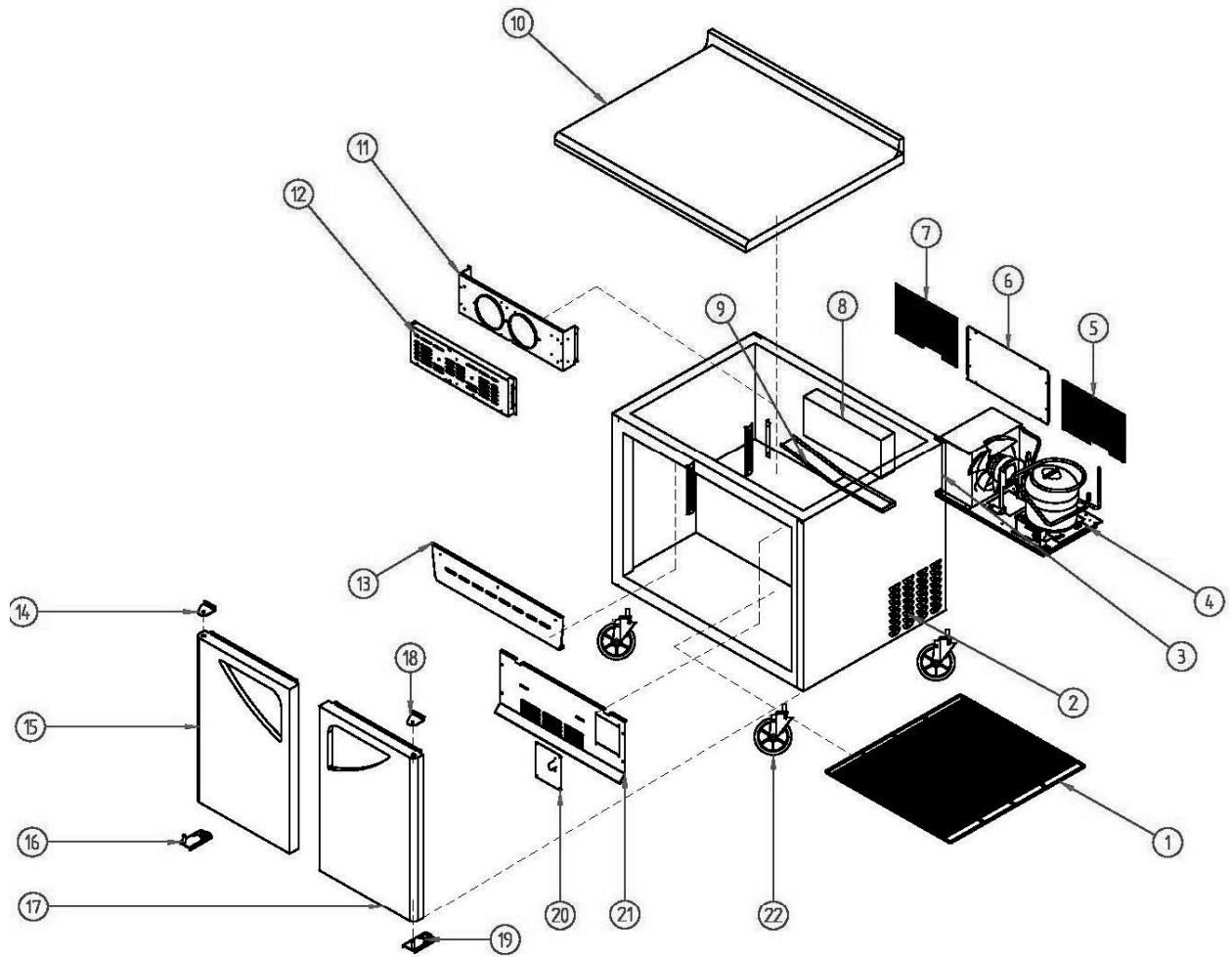
1-1. TWR-28SD EXPLODED VIEW



© Part Name

1	SHELF	11	PAN DUCT FRONT		
2	CABINET ASSEMBLY	12	TOP HINGE		
3	COMPRESSOR	13	DOOR ASSEMBLY		
4	CONDENSER ASSEMBLY	14	BOTTOM HINGE		
5	MECH COVER	15	TAMPERATURE CONTROL		
6	COUNTER TOP	16	EVAPORATOR DUCT		
7	EVAPORATOR FAN DUCT	17	CASTER		
8	LOUVE	18			
9	EVAPORATOR ASSEMBLY	19			
10	EVAPORATOR DRAIN GUIDE	20			

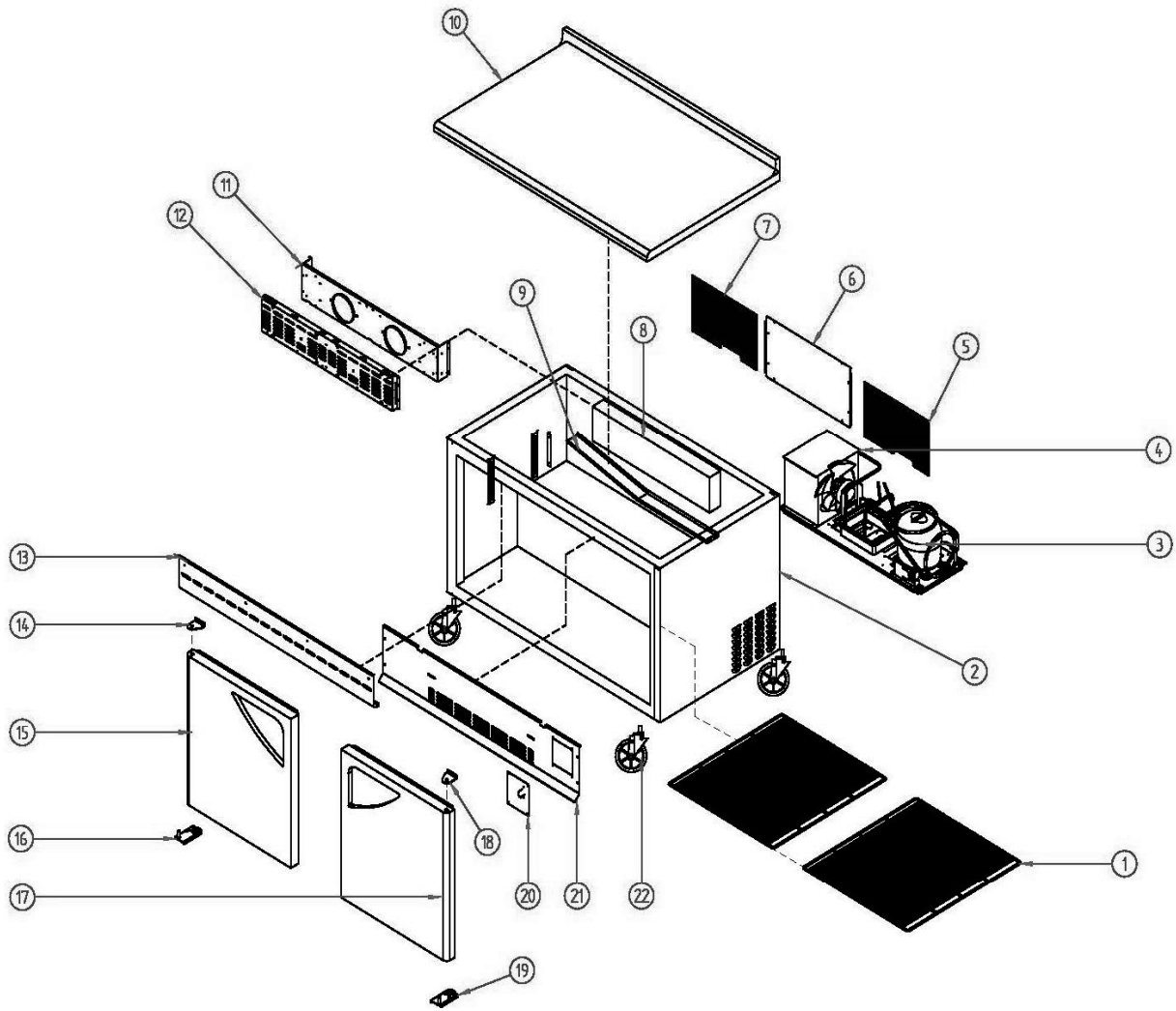
1-2. TWR-36SD EXPLODED VIEW



© Part Name

1	SHELF	11	EVAPORATOR FAN DUCT	21	EVAPORATOR DUCT
2	CABINET ASSEMBLY	12	LOUVE	22	CASTER
3	CONDENSER ASSEMBLY	13	PAN DUCT FRONT		
4	COMPRESSOR	14	TOP HINGE(LF)		
5	MECH COVER(RH)	15	DOOR ASSEMBLY(LF)		
6	UNIT COVER	16	BOTTOM HINGE(LF)		
7	MECH COVER(LF)	17	DOOR ASSEMBLY(R)		
8	EVAPORATOR ASSEMBLY	18	TOP HINGE(RH)		
9	EVAPORATOR DRAIN GUIDE	19	BOTTOM HINGE(RH)		
10	COUNTER TOP	20	TAMPERATURE CONTROL		

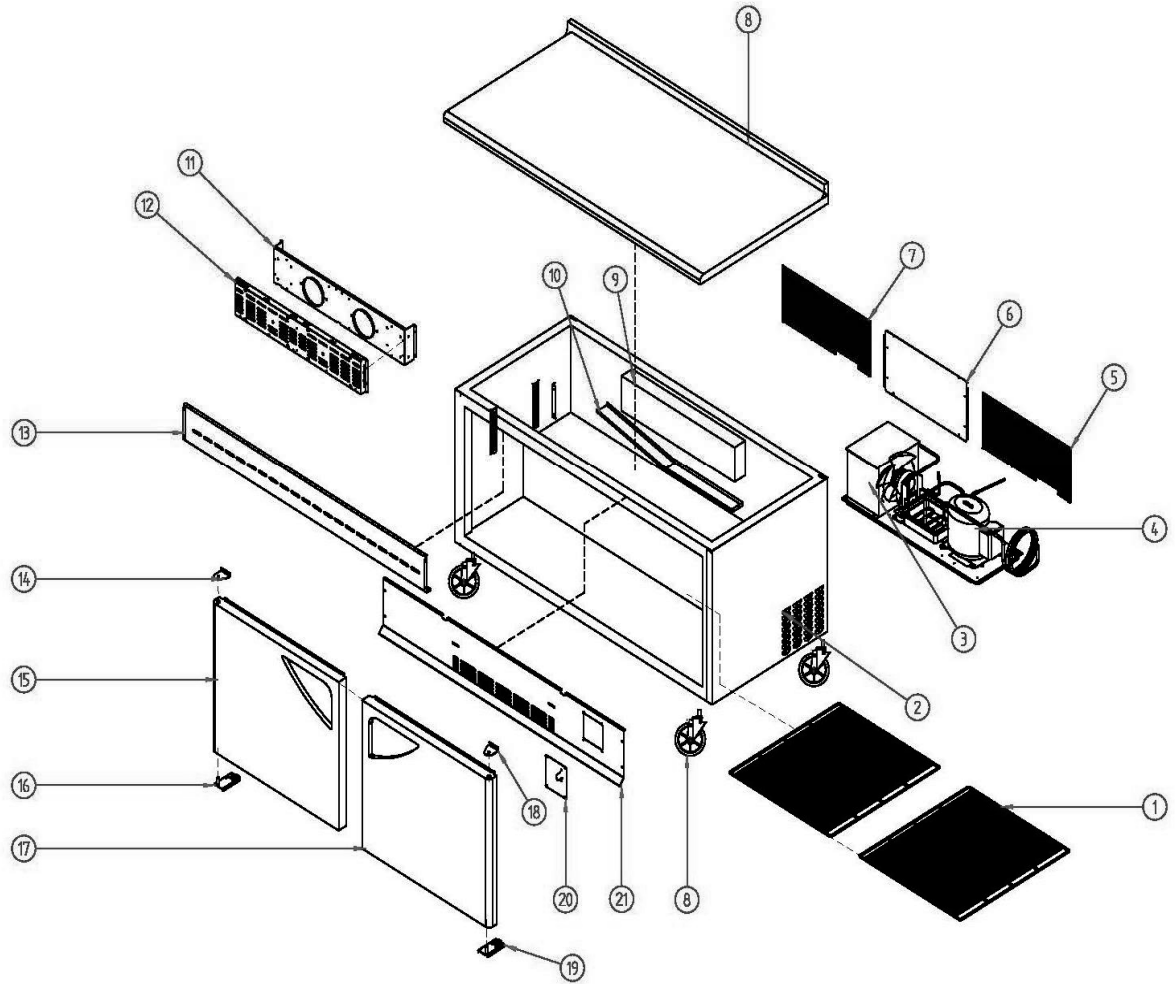
1-3. TWR-48SD EXPLODED VIEW



◎ Part Name

1	SHELF	13	PAN DUCT FRONT		
2	CABINET ASSEMBLY	14	TOP HINGE(LF)		
3	COMPRESSOR	15	DOOR ASSEMBLY(LF)		
4	CONDENSER ASSEMBLY	16	BOTTOM HINGE(LF)		
5	MECH COVER(RH)	17	DOOR ASSEMBLY(RH)		
6	UNIT COVER	18	TOP HINGE(RH)		
7	MECH COVER(LF)	19	BOTTOM HINGE(RH)		
8	EVAPORATOR ASSEMBLY	20	TAMPERATURE CONTR		
9	EVAPORATOR DRAIN GUI	21	EVAPORATOR DUCT		
10	COUNTER TOP ASSEMBL	22	CASTER		
11	EVAPORATOR FAN DUCT	23			
12	LOUVER	24			

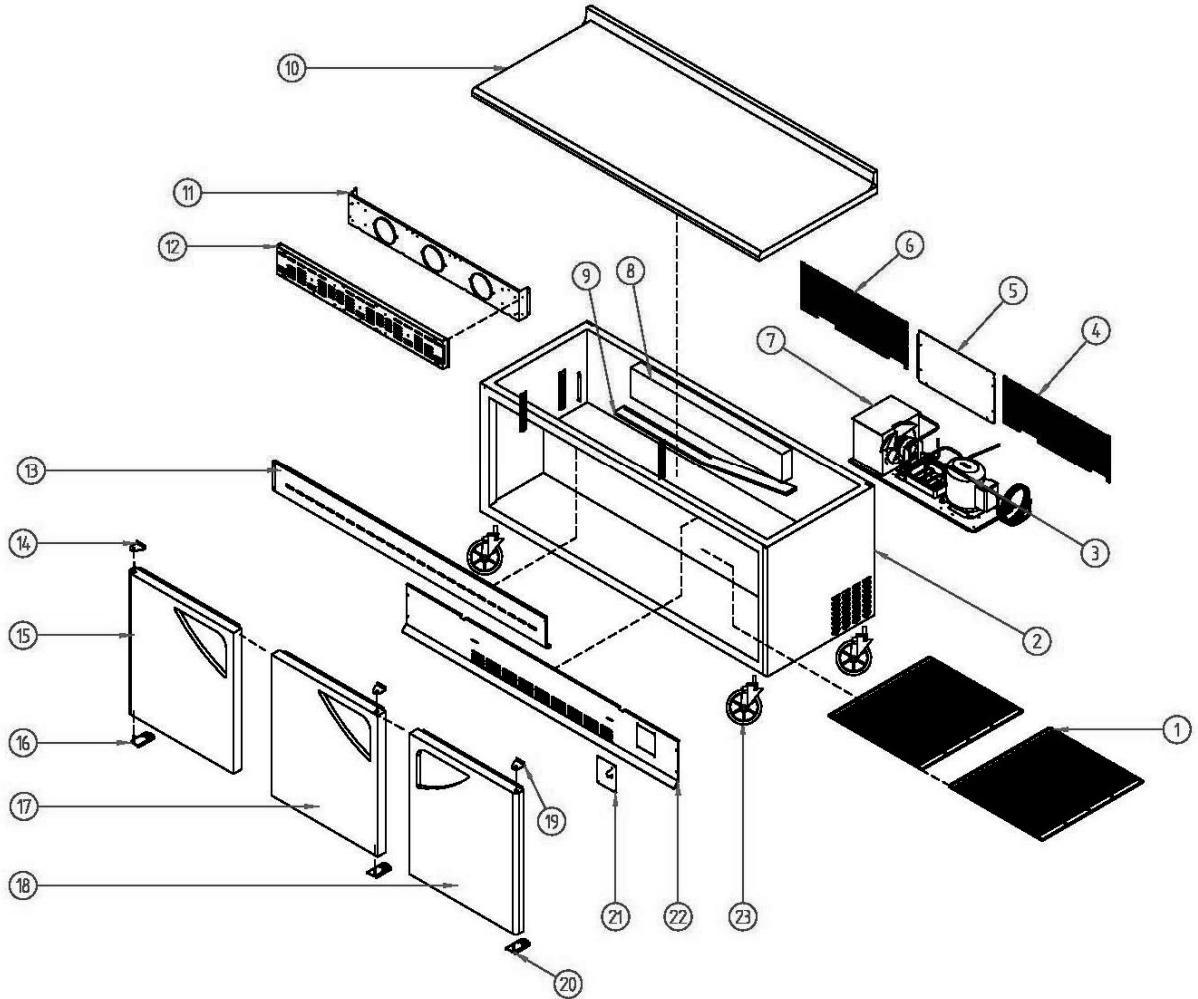
1-4. TWR-60SD EXPLODED VIEW



© Part Name

1	SHELF	14	TOP HINGE(LF)		
2	CABINET ASSEMBLY	15	DOOR ASSEMBLY(LF)		
3	CONDENSER ASSEMBLY	16	BOTTOM HINGE(LF)		
4	COMPRESSOR	17	DOOR ASSEMBLY(RH)		
5	MECH COVER(RH)	18	TOP HINGE(RH)		
6	UNIT COVER	19	BOTTOM HINGE(RH)		
7	MECH COVER(LF)	20	TAMPERATURE CONTROL		
8	COUNTER TOP ASSEMBL	21	EVAPORATOR DUCT		
9	EVAPORATOR ASSEMBLY	22	CASTER		
10	EVAPORATOR DRAIN GUI	23			
11	EVAPORATOR FAN DUCT	24			
12	LOUVER	25			
13	PAN DUCT FRONT	26			

1-5. TWR-72SD EXPLODED VIEW

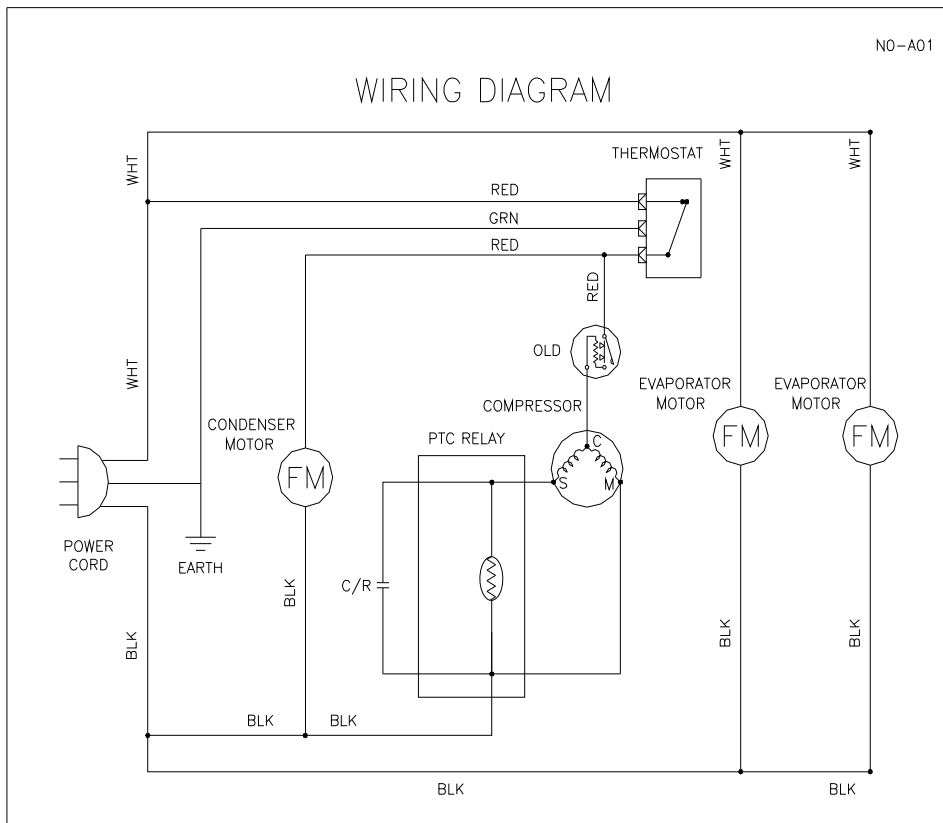


© Part Name

1	SHELF	14	TOP HINGE(LF)		
2	CABINET ASSEMBLY	15	DOOR ASSEMBLY(LF)		
3	COMPRESSOR	16	BOTTOM HINGE(LF)		
4	MECH COVER(RH)	17	DOOR ASSEMBLY(MID)		
5	UNIT COVER	18	DOOR ASSEMBLY(RH)		
6	MECH COVER(LF)	19	TOP HINGE(RH)		
7	CONDENSER ASSEMBLY	20	BOTTOM HINGE(RH)		
8	EVAPORATOR ASSEMBLY	21	TAMPERATURE CONTROL		
9	EVAPORATOR DRIAN GUI	22	EVAPORATOR DUCT		
10	COUNTER TOP ASSEMBL	23	CASTER		
11	EVAPORATOR FAN DUCT				
12	LOUVER				
13	PAN DUCT FRONT				

2. WIRING DIAGRAMS

2-1. TWR-28SD / TWR-36SD / TWR-48SD / TWR-60SD / TWR-72SD



3.MAIN COMPONENTS

1.COMPRESSOR

MODEL	PART NAME	PART NO.	HORSE	CAPACITY	TYPE OF	INPUT	MAKER
TWR-28SD	HBL-27YE-1	M369700100	1/4HP	~	CSIR	110-115V 60Hz	DAEWOO
TWR-36SD	HBL-27YE-1	M369700100	1/4HP	~	CSIR	110-115V 60Hz	DAEWOO
TWR-48SD	SK1A1C-L2W	M609700100	1/4HP	~	CSIR	115V 60Hz	SAMSUNG
TWR-60SD	SK1A1C-L2W	M609700100	1/3HP	~	CSIR	115V 60Hz	SAMSUNG
TWR-72SD	SK1A1C-L2W	M609700100	1/3HP	~	CSIR	115V 60Hz	SAMSUNG

2.COMPRESSOR RELAY ,OVERLOAD

MODEL	RELAY	OVERLOAD	MAKER	NOTE
TWR-28SD	GSR SO68 E03 03	783RHBZZ-52	DAEWOO	~
TWR-36SD	GSR SO68 E03 03	783RHBZZ-52	DAEWOO	~
TWR-48SD	J531Q34E220M3503	795TFBZZ-53	SAMSUNG	~
TWR-60SD	J531Q34E220M3503	795TFBZZ-53	SAMSUNG	~
TWR-72SD	J531Q34E220M3503	795TFBZZ-53	SAMSUNG	~

3.COMPRESSOR CAPACITOR

MODEL	STARTING	PART NO.	UNNIN	PART NO.	MAKER	NOTE
TWR-28SD	200V/100uF	~	50V/10	~	~	~
TWR-36SD	200V/100uF	~	50V/10	~	~	~
TWR-48SD	125V/125uF	~	50V/12	~	~	~
TWR-60SD	125V/125uF	~	50V/12	~	~	~
TWR-72SD	125V/125uF	~	50V/12	~	~	~

4.CONDENSER FAN MOTOR

MODEL	PART NAME	PART NO.	INPUT	TYPE	BLADE	MAKER
TWR-28SD	IS-4420DWSN-2A	3963328120	15V, 60Hz	SHADED POLE INDUCTION	AL 5	SUNGSHIN
TWR-36SD	IS-4420DWSN-2A	3963328120				
TWR-48SD	IS-4420DWSN-2A	3963328120				
TWR-60SD	IS-4420DWSN-2A	3963328120				
TWR-72SD	IS-4420DWSN-2A	3963328120				

5.EVAPORATOR FAN MOTOR

MODEL	PART NAME	PART NO.	POLE	INPUT	TYPE	BLADE (NUMBER)	NO
TWR-28SD	DAI-6202DEUA	M729900200	2P	115V,60Hz	SHADED POLE INDUCTION	ZYTEL 4	JUNGSH
TWR-36SD	DAI-6202DEUA						
TWR-48SD	DAI-6202DEUA						
TWR-60SD	DAI-6202DEUA						
TWR-72SD	DAI-6202DEUA						

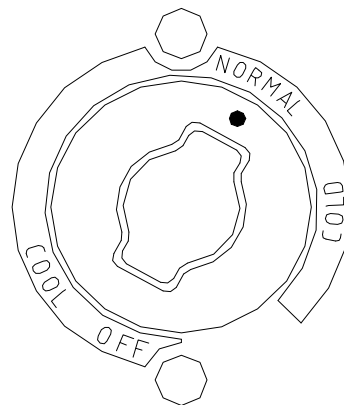
6.THERMOSTAT

PART NAME	PART NO.	RATING	MAKER
THERMOSTAT	283L0	K55Q-5607,16A	RANCO
		TWR-28SD,TWR-36SD,TWR-48SD TWR-60SD,TWR-72SD	

4. TEMPERATURE CONTROL INSTRUCTION

- Temperature can be controlled by the user.
- Factory setting is at "NORMAL" Settings can be changed by Dial Knob.

⊙ Indicates temperature level setting.



TEMPERATURE
CONTROLLER

- *If thermostat knob is pointing at OFF, compressor and condenser fan motor would not run.*
- *Keep unit unplugged, if not in use for a long period of time.*

5. PARTS LIST

Part Name	Part Code	Description	Model					Remarks
			28	36	48	60	72	
1. DOOR								
DOOR ASSEMBLY (L)	M600001000					1		
DOOR ASSEMBLY (L)	M720001100				1		1	
DOOR ASSEMBLY (L)	M361800200			1				
DOOR ASSEMBLY (M)	M720001000						1	
DOOR ASSEMBLY (R)	M270000900		1					
DOOR ASSEMBLY (R)	M361800100			1				
DOOR ASSEMBLY (R)	M600000900					1		
DOOR ASSEMBLY (R)	M720000900				1		1	
DOOR BUSHING	M720700100	PA-66	1	2	2	2	3	
DOOR BUSHING	M729200100	PA-66	1	2	2	2	3	
DOOR GASKET	M272300100	PVC	1					
DOOR GASKET	M362300100	PVC		2				
DOOR GASKET	M602300100	PVC				2		
DOOR GASKET	M722300100	PVC			2		3	
TOP HINGE (R)	M722900100	SUS304,SM45C	1	1	1	1	2	
TOP HINGE (L)	M722900200	SUS304,SM45C		1	1	1	1	
TOP HINGE SPACER	M725000100	SUS439-2B	1	2	2	2	3	
BOTTOM HINGE (U)(R)	30229M0400	SUS304,SM45C	1	1	1	1	2	
BOTTOM HINGE (U)(L)	30229M0300	SUS304,SM45C		1	1	1	1	
SPRING BAR			1	2	2	2	3	
2. COUNTER TOP								
COUNTER TOP ASSEMBLY	UW29500100		1					
COUNTER TOP ASSEMBLY	UW39500100			1				
COUNTER TOP ASSEMBLY	UW49500100				1			
COUNTER TOP ASSEMBLY	UW69500100					1		
COUNTER TOP ASSEMBLY	UW79500100						1	
CASTER	M726500100	5' MOVING	2	2	2	2	2	
CASTER	M726500200	MOVING STOPPING	2	2	2	2	2	
3. COMPRESSOR COMPARTMENT								
COMPRESSOR	M369700100	SH43C56B	1	1				
COMPRESSOR	M609700100	HBL 27YE-1			1	1	1	
SUCTION PIPE(B)	U284200200	CU	1					
SUCTION PIPE(B)	U354200100	CU		1				
SUCTION PIPE(B)	S604400200	CU			1	1		
SUCTION PIPE(B)	U724400200	CU					1	
SUCTION PIPE(A)	M274400100	CU	1					
SUCTION PIPE(A)	M364400300	CU		1				
SUCTION PIPE(A)	M604400400	CU			1	1		
SUCTION PIPE(A)	U724400100	CU					1	
COMP BASE	M270300100	GI	1					
COMP BASE	M360300100	GI		1				
COMP BASE	M600300100	GI			1			
COMP BASE	M600300300	GI				1	1	

Part Name	Part Code	Description	Model					Remarks
			28	36	48	60	72	
CONDENSER FAN MOTOR	3963328120	S-4420DWSN-2	1	1	1	1	2	
POWER CORD	M721300100	KKP-30(9.85FT)	1	1	1	1	1	
CONDENSER FAN AIR GUID	M722500900	GI					1	
DRAIN PAN	30211A0200	PP	1					
DRAIN PAN	M729300100	PP		1	1	1	1	
DRAIN PIPE	M364400100	Φ8X0.8T		1				
DRAIN PIPE	M484400100	Φ8X0.8T			1	1	1	
CONDENSER MOTOR BRAC	3020602200	GI	1	1	1	1	2	
CONDENSER FAN BLADE	M729800100	AL	1	1	1	1	2	

Part Name	Part Code	Description	Model					Remarks
			28	36	48	60	72	
4. REFRIGERATION COMPARTMENT								
LOUVER	M275800100	SUS439-2B	1	1				
LOUVER	M485800100	SUS439-2B			1			
LOUVER	M605800100	SUS439-2B				1		
LOUVER	M725800100	SUS439-2B					1	
SHELF	M277800100	STS304	1					
SHELF	M367800100	STS304		2				
SHELF	M607800100	STS304				2		
SHELF	M727800100	STS304			2		2	
SHELF MID	M727800300	STS304					1	
FIXTURE SHELF CLIP	30220L0900	PA-66	4	8	8	8	12	
SHELF MID BRACKET	M720600100	SUS304	2	1	1	1		
SHELF STANDARD	M725300200	SUS304	4	8	8	8	12	
DRAIN PAN GUIDE(R)	M272500100	GI	1					
DRAIN PAN GUIDE(L)	M272500200	GI	1					
EVAPORATOR AS	M367000100	CU,SPG,AL	1	1				
EVAPORATOR AS	M487000200	CU,SPG,AL			1	1	1	
THERMOSTAT	30283L0100	250V,16A K55Q -5607	1	1	1	1	1	
EVAPOVATOR FAN DUCT	M276900200	SUS439-2B	1	1				
EVAPOVATOR FAN DUCT	M486900200	SUS439-2B			1			
EVAPOVATOR FAN DUCT	M606900200	SUS439-2B				1		
EVAPOVATOR FAN DUCT	M726900200	SUS439-2B					1	
EVAPOVATOR DUCT	M276900300	SUS439-2B	1					
EVAPOVATOR DUCT	U366900300	SUS439-2B		1				
EVAPOVATOR DUCT	M486900300	SUS439-2B			1			
EVAPOVATOR DUCT	M606900300	SUS439-2B				1		
EVAPOVATOR DUCT	M726900300	SUS439-2B					1	
FIXTURE EVAP DUCT BRACKET	M720601000	SUS439-2B	2	2	2	2	2	
MULLION FRAME	M722200400	PVC		1	1	1	2	
MULLION BACK FRAME	M722200200	SUS304-2B		1	1	1	2	
MULLION FRAME INSULATION	M723300100	F-PS		1	1	1	2	
CONDENSER AS	M365900100	CU,SPG,AL	1	1				
CONDENSER AS	M605900100	CU,SPG,AL			1	1	1	
BRACKET MOTOR	30220T0300	SUS304	2	2	2	2	3	
FAN COOLING BLADE	3011802210	ZYTEL	1	1	1	1	1	
EVAP FAN MOTOR	CM25000100	IS-3220QTBD	2	2	2	2	2	

6. REPLACEMENT OF MAIN COMPONENTS

6-1. REPLACING DOOR

A. Unscrew the top hinge



B. Lift the door

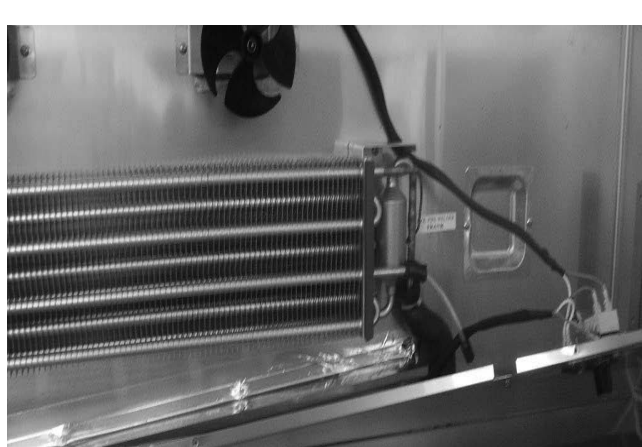


6-2. REFRIGERATION COMPARTMENT PARTS

A. Disassemble the evaporator fan duct assembly



B. Disassemble the evaporator duct

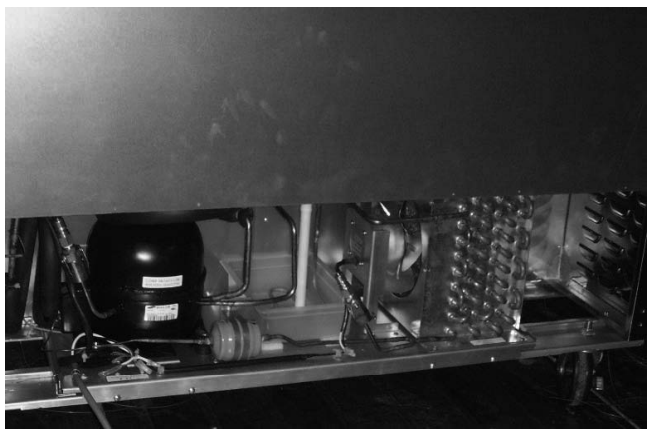
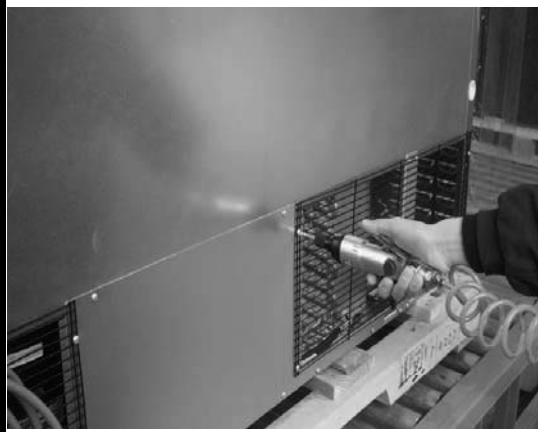


C.Remove the temperature & sensor

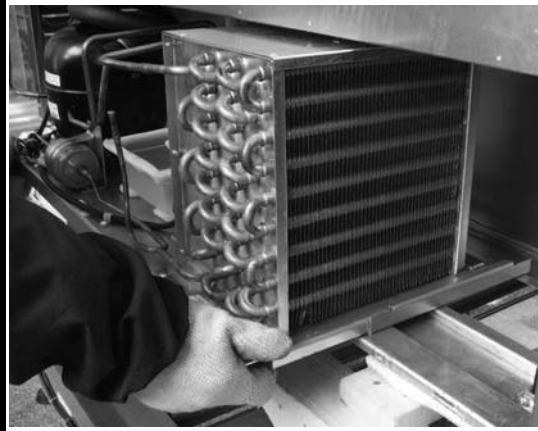


6-3. COMPRESSOR COMPARTMENT PARTS

A.Disassembly the rear grill



B.Disassembly the condensing unit



6-4. REPLACING THE EVAPORATOR & EVAPORATOR FAN MOTOR

A.Remove the evaporator coil



B.Remove the evaporator fan motor

