

Persons under age 18 are not permitted to operate or have accessibility to operate this equipment per U.S. Dept. of Labor Employment Standards Administration Fact Sheet No. ESA91-3.



TABLE OF CONTENTS

DESCRIPTION	PAGE
Table of Contents	1
Inspection.....	1
Operator Safety	1
Installation	1
Assembly and Operating Instructions	1 - 2
Cleaning	2
Repair	3
Parts List	3
Figure 1	4
Wiring Diagram 115/V, 60HZ, 1PH, 220-240V, 50HZ, 1PH	5
Warranty Information	Back Cover

INSTRUCTION MANUAL

Inspection:

All Univex MG0012's are inspected prior to packaging to assure both the machine quality, correct inclusion of options, and proper voltage. However, upon unpacking, all items should be carefully verified that they are correct. Any damage, imperfection, or shortages should be reported immediately to your dealer or directly to Univex Customer Service, and/or shipment carrier.

Operator Safety:

- Read and understand all instructions and safety warnings prior to operating unit.
- For safety, a small padlock (available at any hardware store) may be passed through the switch guard (Item 22) to positively secure the switch after it has been moved to the "off" position.
- Never put fingers or any utensils (other than the stomper (Item 35) in the throat or entry of the grinder, or in the knife and plate area of the grinder. This is a powerful unit designed to grind meat; use extreme caution and avoid exposing body parts to grinding and cutting areas of the unit.
- Switch the power off and disconnect the electric power supply prior to mounting and dismounting the grinder, cleaning, or servicing.
- Knife is sharp and can cut finger. Use caution when handling.
- Always have chopper securely mounted, worm fully coupled onto drive shaft, and the knife, plate, and ring snugged on before switching the power on.
- Always remove the grinder from the power drive before cleaning; never rinse with hose while mounted to power source, inviting electrical shock.
- Be aware if the electrical supply to the MG0012 is disconnected, but the switch is left in the "on" position, the MG0012 will start when the electrical supply is reconnected. To safety power down the MG0012, move the switch to the "off" position, then disconnect the electrical supply.

Installation:

- This is a table-top unit.
- Insure the unit is located such that it is placed on a level and stable surface, and sufficient clearance is provided all around the unit for safety and ease of operation. Proper location includes space for the feed pan and collection container.

ASSEMBLY AND OPERATING INSTRUCTIONS:

Introduction:

The Univex MG0012 Meat Grinder consists of a 1/2 H.P. electric motor power base which drives a meat grinder designed to utilize industry standard #12 knives and full range of #12 grinding plates. Included as standard equipment is a carbon steel knife (Item 29), 3/16 grinding plate (Item 28), meat stomper (Item 35), and stainless steel feed pan (Item 34) for holding meat to be processed.

Assembly:

WARNING: Disconnect power supply prior to assembly.

1. Mount the chopper-housing (Item 33) to the power takeoff by inserting and rotating counter clockwise until the chopper stops in the vertical position.
2. Slide the worm (Item 31) into the chopper housing, (Item 33) rotating the worm until the rear slot engages with the drive shaft.

WARNING: The knife is sharp and can cut fingers.

3. Slide the knife (Item 29), sharp edges outward, onto the square of the worm (Item 30). Slide the appropriate plate (Item 28) onto the worm (Item 31) and into the housing aligning slot with pin. Screw the ring (Item 27) onto the chopper housing (Item 33) until it is just snug. Too much pressure can damage the unit.
4. Insert the feed pan throat (Item 34) into the chopper housing.
5. Arrange for a container to receive the ground product.

WARNING: Never put fingers or utensils in the throat of the grinder or the knife and plate interface.

Process:

1. Cut meat or other products to be processed to fit into the chopper, and place in feed pan.
2. Connect power supply and actuate power switch (Item 20).
3. Use the meat stomper if desired, to guide product into grinding zone. The stomper is recommended for regrind.
3. Collect ground product in storage container.

Cleaning:

1. Turn unit off and disconnect from power supply.
2. Disassemble unit in reverse of assembly instructions -- Remove storage container, feed pan, and then ring, plate, knife, worm, and chopper housing.

WARNING: The knife is sharp and can cut fingers.

3. Clean components including the drive shaft which is part of Item 7, by following the procedure: wash, rinse, sanitize, and air dry. Apply a small amount of food grade lubricant to the rear shaft portion of worm.

Repair

Always Disconnect Machine from Electrical Supply Before Servicing.

1. Gear Box Removal

- A. Remove 4 screws (item 16 & 43) securing top cover (item 13).
- B. Remove 2 screws (item 43) from front of base (item 18).
- C. Lift motor/gear box assembly (item 17) from base (item 18) by removing two screws (item 45)
- D. Disconnect motor cord from switch (item 20) and capacitor cord from capacitor.

Warning Capacitor may store electrical charge. Discharge with insulated screw driver or similar insulated device.

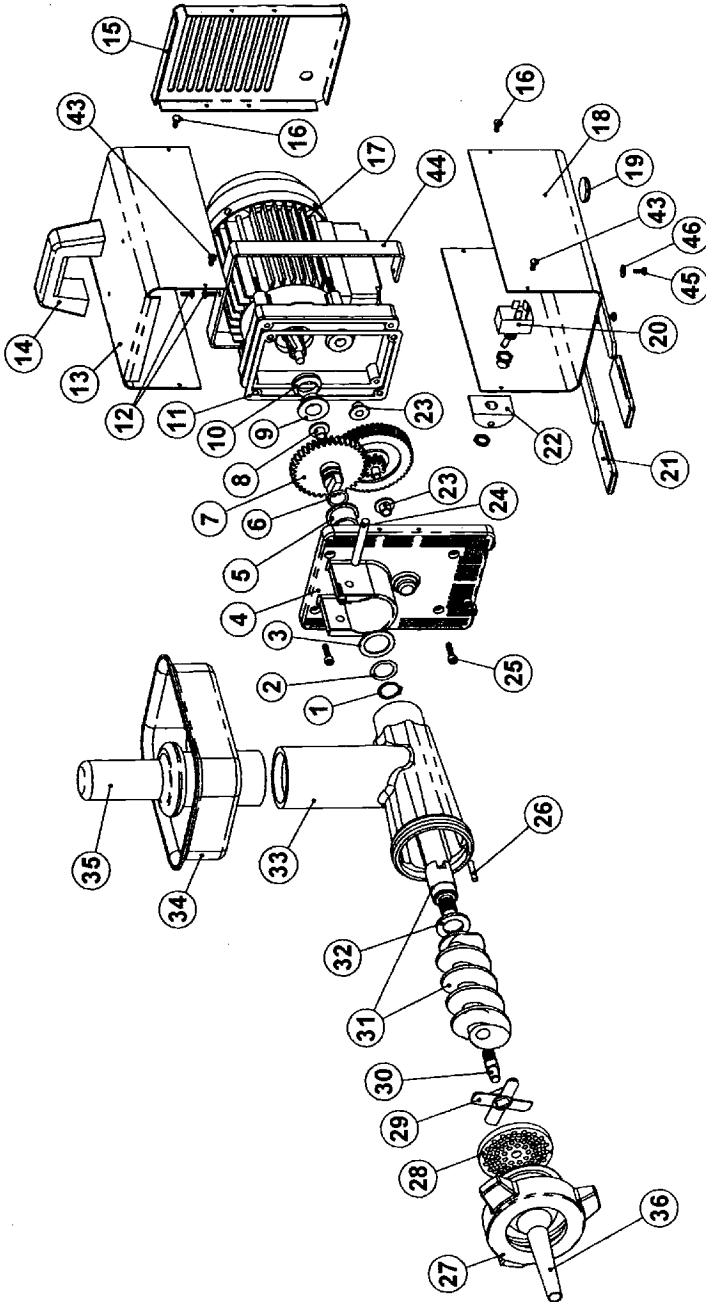
2. Gear Box Repair

- A. Remove 4 screws (item 25) from PTO housing (item 4).
- B. Pry PTO housing (item 4) away from front of motor (cork gasket (item 11) should be replaced before reassembly).
- C. Remove retaining ring (item 1) and slide output gear/ shaft (item 7) from PTO housing (item 4).
- D. Remove as much grease as possible with a cloth and reapply new grease before reassembling gear box. (Do not use solvents to clean plastic parts.)
- E. Inspect all gears, bushings, seals, and shafts for wear and replace where necessary.
- F. Reassemble in reverse order.

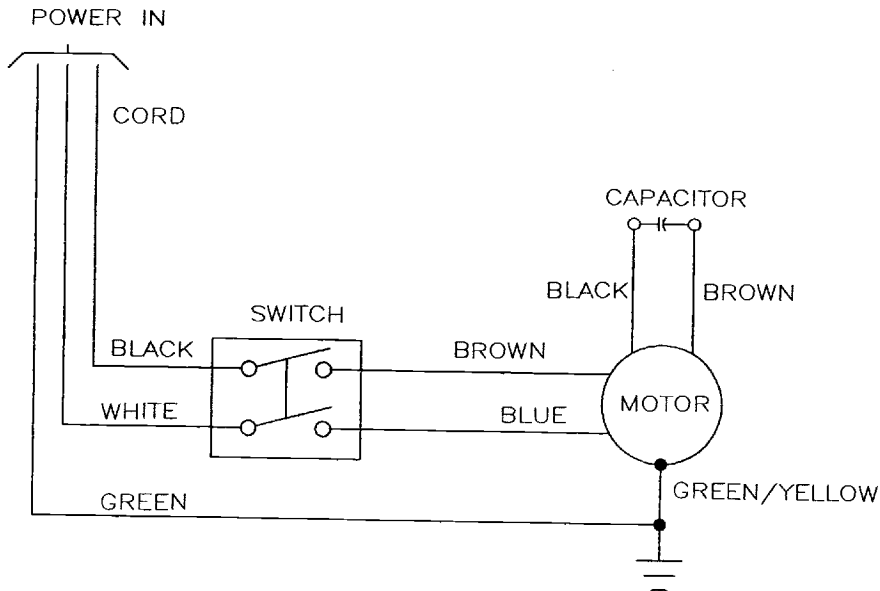
**ASSEMBLY
Figure 1**

Illus.	Part No.	Description	Qty
1.	8700410	Retaining Ring, External	1
2.	8700411	Shim, Washer	1
3.	8700412	Washer, Nylon	1
4.	8700413	PTO Housing	1
5.	8700414	Bushing, Flanged PTO	1
6.	8700415	O-ring,	1
7.	8700416	Gear, Output Set	1
8.	8700417	Bushing, Flanged, Output Gear	1
9.	8700418	Bushing, Flanged, Oil Seal	1
10.	8700419	Seal, V-Ring Oil	1
11.	8700420	Gasket, Gear Box	1
12.	1204009	Screw, Hex HD Washer M6 X 1.25 X 8mm Zinc Plated	3
13.	8700421	Cover, Top	1
14.	6509045	Handle	1
15.	8700423	Panel, Rear	1
16.	1204010	Screw SS Phil HD Self Tapping 3.9 x 9.5mm	4
17.	8700424	Motor 115V/60HZ/1PH	1
	8700425	Motor 220V/50HZ/1PH	1
18.	8700426	Base	1
19.	8700427	Feet, Rear Rubber	2
20.	7120009	Switch (with mounting hardware)	1
21.	8700450	Sleeve, Vinyl Leg	2
22.	7120011	Guard, Switch	1
23.	8700431	Bushing, Flanged, Step Gear	1
24.	8700432	Pin, Chopper Mounting	1
25.	1204011	Screw, Soc. HD. Cap M5 X 0.8 X 20MM lg.	4
26.	8700433	Pin, Plate Locating	1
27.	8700434	Ring, Chopper	1
28.	1000509	Plate, 3/16 Standard	1
	1000508	Plate, 1/8 Optional	
	1000510	Plate, 1/4 Optional	
	1000511	Plate, 3/8 Optional	
	1000512	Plate, 1/2 Optional	
29.	1000506	Knife	1
30.	8700435	Shaft, Front	1
31.	8700436	Worm Assy (Includes Illus 30 and 32)	1
32.	8700437	Washer, Thrust	1
33.	8700438	Housing, Chopper	1
34.	8700439	Pan	1
35.	8700440	Stomper	1
36.	1000513	Sausage Stuffer 1/2 Optional	1
	1000514	Sausage Stuffer 3/4 Optional	
37.	8700441	Capacitor, 115V only (not shown)	1
	8700442	Capacitor, 220V only (not shown)	1
38.	8700443	Cord, Power, 115V only (not shown)	1
	8700444	Cord, Power, 220V only (not shown)	1
39.	8700445	Cord, Motor (not shown)	1
40.	8700446	Cord, Capacitor (not shown)	1
41.	8700447	Strain Relief, Power Cord (not shown)	1
42.	8700448	Strain Relief Motor Cord (not shown)	1
43.	1204012	Screw SS Phil HD M5-0.8 X 15MM	4
44.	8700449	Bracket, Motor	1
45.	8512621	Screw M4	2
46.	1200092	Washer, Flat no. 8	2

ASSEMBLY
Figure 1



WIRING DIAGRAM
MODEL MG0012
 115V, 60HZ, 1PH
 220-240V, 50HZ, 1PH



IMPORTANT: Before making electrical connections, check the specifications on the data plate (located on the rear panel) to assure they agree with those of your electrical service.

WARNING: Whenever maintenance is being performed, or whenever the top cover has been removed, DISCONNECT electrical cord and place a tag on it indicating the grinder is being worked on.