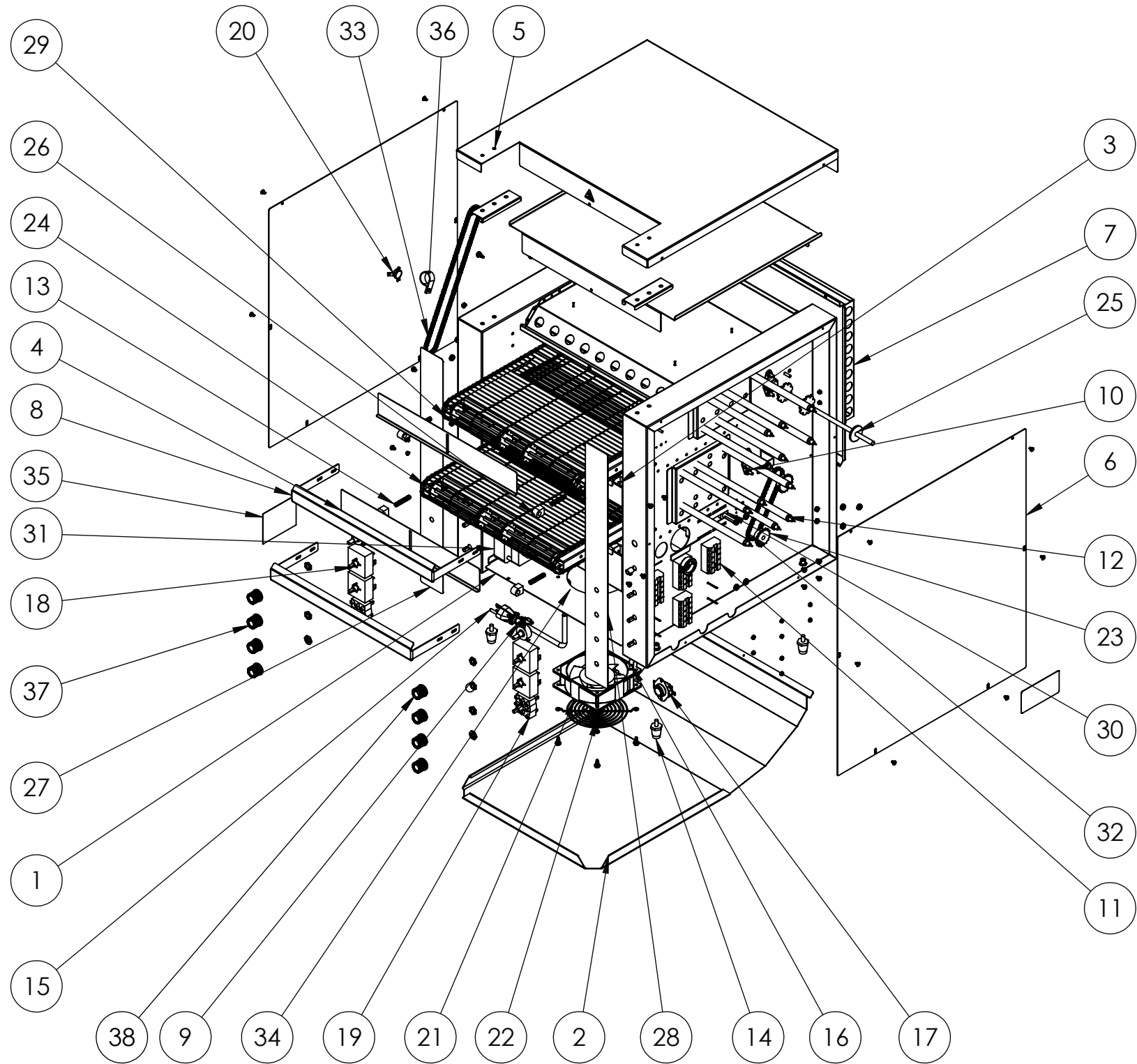




DUAL CONVEYOR TOASTER - 208V



| ITEM NO. | PART NUMBER | DESCRIPTION | QTY. |
|----------|-------------|--------------------------------------|------|
| 1 | B300005 | CT4 18" CONTROL BOX COVER | 1 |
| 2 | B300013 | CT4 18" TOAST CHUTE | 1 |
| 3 | B205129 | SO2 14.5" CRUMB TRAY ASSM | 2 |
| 4 | B300059 | CT4H 18" HEAT SHUTTER | 2 |
| 5 | B300233 | CT4-DUAL TOP COVER | 1 |
| 6 | B300230 | CT4-DUAL SIDE PANEL | 2 |
| 7 | B205153 | CT4 DUAL BACK PANEL | 1 |
| 8 | B300807 | CT4-2000 NOSE GUARD | 2 |
| 9 | B200901 | CONTROL, SPEED, 500 OHM CT4 | 2 |
| 10 | B201100 | BEARING ASSEMBLY 5/16" | 4 |
| 11 | B401033 | TERMINAL BLOCK 5 POSITION | 4 |
| 12 | B204033 | HEATERTUBE QUARTZ 15 3/8 208V | 12 |
| 13 | B400261 | SPRING, .038" DIA, 1.500" LENGTH | 4 |
| 14 | B400300 | LEGS, BLACK 1" 1/4-20 | 4 |
| 15 | B401051 | CORD, POWER 12/3 60" 6-30P | 1 |
| 16 | B401060 | CORD,FAN,HP-75.24-A | 1 |
| 17 | B401100 | RESET SWITCH | 1 |
| 18 | B401102 | SWITCH, 240V | 4 |
| 19 | B401103 | SWITCH, ROTARY POWER | 2 |
| 20 | B401107 | SWITCH FAN CERAMIC | 1 |
| 21 | B401211 | 230V MOTOR, FAN | 1 |
| 22 | B401220 | GUARD, FAN | 1 |
| 23 | B401300 | SPROCKET, 25B17 X 8MM | 4 |
| 24 | B401349 | IDLE SHAFT SO2 14.5" | 2 |
| 25 | B401342 | SHAFT, DRIVE, 14.5" | 2 |
| 26 | B401352 | BEARING, FRONT, SPRING-HOUSING | 4 |
| 27 | B401423 | CT4-DUAL UPPER CHAMBER LABEL | 1 |
| 28 | B401424 | CT4-DUAL LOWER CHAMBER LABEL | 1 |
| 29 | B205138 | WIRE CONVEYOR BELT 14.5" X 41" | 2 |
| 30 | B401201 | DRIVE MOTOR 208/240V RMS 344 | 1 |
| 31 | B401203 | DRIVE MOTOR, 208/240V REVERSED | 1 |
| 32 | B401386 | CHAIN LADDER, 13.25" | 1 |
| 33 | B401387 | CHAIN, LADDER, 26" | 1 |
| 34 | B400321 | STRAIGHT 12 GA STRAIN RELIEF BUSHING | 1 |
| 35 | B405038 | CT4-DUAL RESET LABEL | 1 |
| 36 | B400331 | 7/8 WIRE CLAMP | 1 |
| 37 | B405018 | SILVER PUSH-ON KNOB | 6 |
| 38 | B405019 | SILVER PUSH-ON KNOB W/ SET SCREW | 2 |