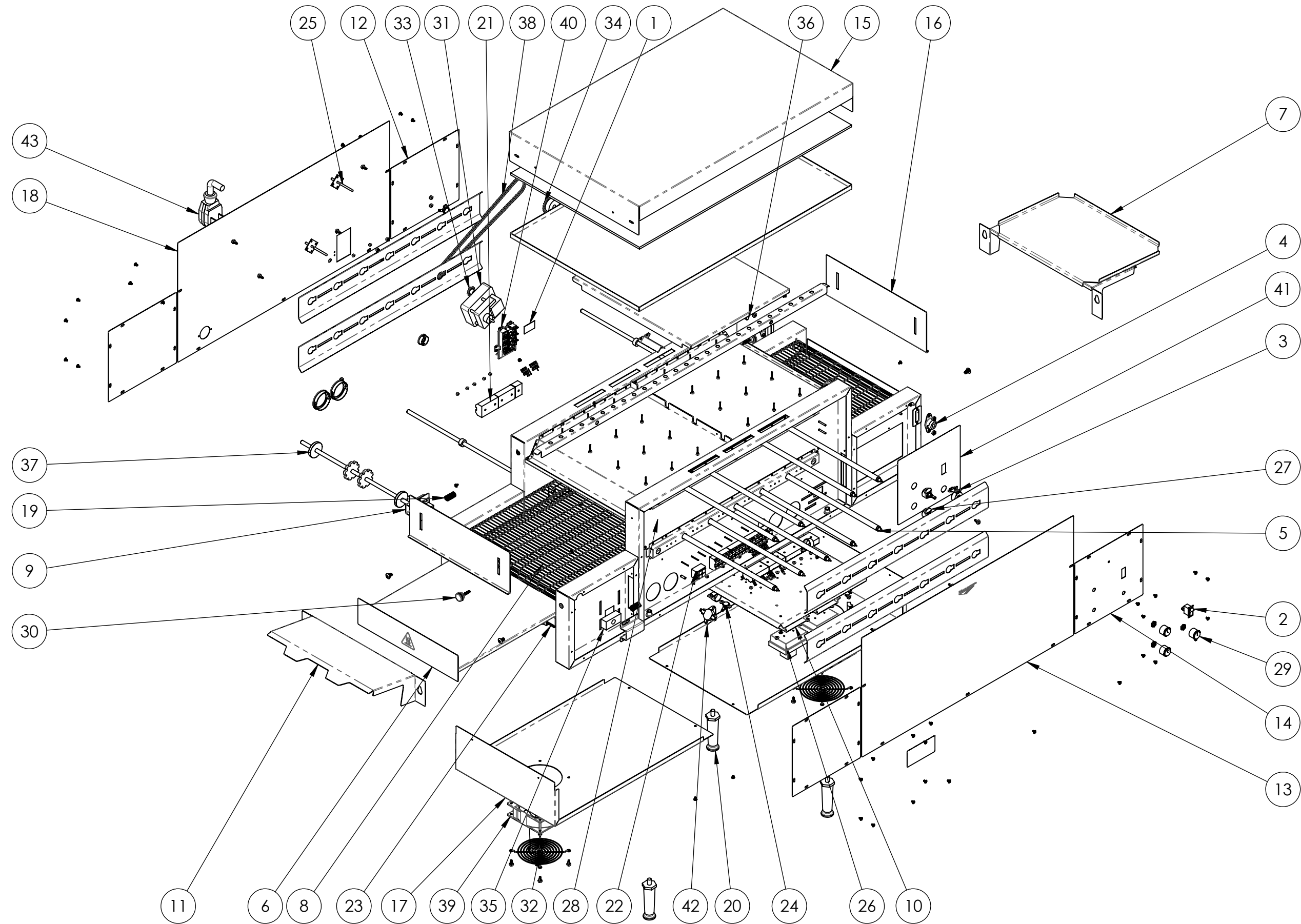




68 INCH CONVEYOR PIZZA OVEN 240V 14" LEFT TO RIGHT



**68 INCH CONVEYOR PIZZA OVEN 240V 14" LEFT TO RIGHT**

ITEM NO.	PART NUMBER	DESCRIPTION	PO4-24014L-R QTY.
1	324105	POWER CAUTION STICKER	1
2	719124	SWITCH, ROCKER SPST 10A 125V	1
3	B200918	SPEED CONTROL 1000 OHM	1
4	B201101	3/8" BEARING ASSEMBLY	2
5	B204159	HEATERTUBE, QUARTZ 15 3/8"	9
6	B205103	PIZZA OVEN - 14" CRUMB TRAY ASSEMBLY	2
7	B205104	14" UNLOAD TRAY ASSEMBLY	1
8	B205108	JPO 14" WIRE BELT	1
9	B305756	PIZZA OVEN - IDLER BEARING HOUSING	2
10	B305762	PIZZA OVEN - CONTROL BRACKET	2
11	B305772	14" LOAD TRAY	1
12	B305796	SMALL BLANK SIDE PANEL	3
13	B305797	LONG BLANK SIDE PANEL	1
14	B305835	CONTROL SIDE PANEL ANALOG	1
15	B305836	14" TOP COVER	1
16	B305837	JPO 14" HEAT SHUTTER	2
17	B305839	14" CONTROL BOX COVER	2
18	B305856	BLANK POWER SIDE PANEL	1
19	B400263	SPRING, .480" DIA, 1.000" LENGTH	2
20	B400301	METAL PLATED LEG 4"	4
21	B401033	TERMINAL BLOCK 5 POSITION	4
22	B401034	TERMINAL BLOCK 2 POSIITON	1
23	B401060	CORD,FAN,HP-75.24-A	2
24	B401107	SWITCH FAN CERAMIC	2
25	B401120	THERMISTOR PROBE	2
26	B401121	30 AMP CONTROL	2
27	B401122	POTENTIOMETER ASSEMBLY	2
28	B401162	PLUG BUTTON, 1/2"	1
29	B401187	KNOB, PUSH-ON W/ SET SCREW	3
30	B401188	KNOB, W/10-32 STUD PHENOLIC	4

ITEM NO.	PART NUMBER	DESCRIPTION	PO4-24014L-R QTY.
31	B401203	DRIVE MOTOR, 208/240V REVERSED	1
32	B401220	GUARD, FAN	2
33	B401301	11-TOOTH SPROCKET	1
34	B401304	SPROCKET, 25B24 X 3/8	1
35	B401353	JPO SPRING LOADED BEARING	2
36	B401379	PO4 14" DRIVE SHAFT	1
37	B401380	PO4 14" IDLER SHAFT	1
38	B401460	29.75" CHAIN	1
39	B405011	230V CLASS B FAN MOTOR	2
40	B405013	41A INPUT MODULE	1
41	B405020	PO4 CONTROL LABEL	1
42	B405028	68C THERMAL RESET	1
43	B405055	50A 10/3 72" COMPRESSED END	1