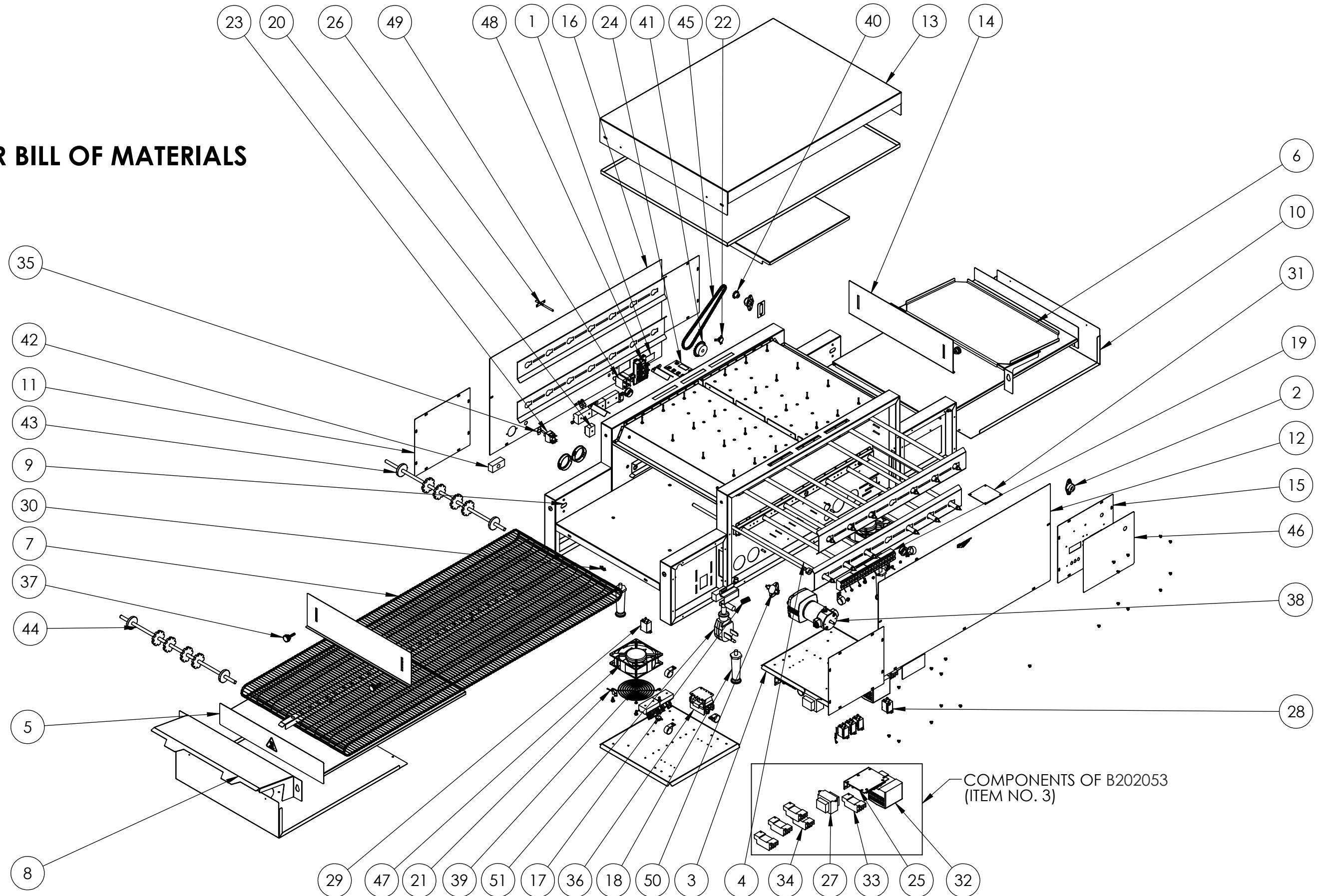


**SEE PAGE 2 FOR BILL OF MATERIALS**





**68" DIG PIZZA OVEN 6-240V 18"**

ITEM NO.	PART NUMBER	DESCRIPTION	QTY.
1	324105	POWER CAUTION STICKER	1
2	B201101	3/8" BEARING ASSEMBLY	2
3	B202053	CONTROL PANEL MGD 18	1
4	B204247	QUARTZ HEATERTUBE 19 3/8	12
5	B205106	18" JPO CRUMB TRAY ASSM	2
6	B205107	18" JPO UNLOAD TRAY ASSM	1
7	B205109	JPO 18" WIRE BELT	1
8	B305744	18" LOAD TRAY	1
9	B305756	PIZZA OVEN - IDLER BEARING HOUSING	2
10	B305794	18" CONTROL BOX COVER	2
11	B305796	SMALL BLANK SIDE PANEL	3
12	B305797	LONG BLANK SIDE PANEL	1
13	B305800	18" TOP COVER	1
14	B305803	JPO 18" HEAT SHUTTER	2
15	B305804	CONTROL SIDE PANEL	1
16	B305808	POWER SIDE PANEL	1
17	B400263	SPRING, .480" DIA, 1.000" LENGTH	2
18	B400301	METAL PLATED LEG 4"	4
19	B401033	TERMINAL BLOCK 5 POSITION	4
20	B401034	TERMINAL BLOCK 2 POSIITON	2
21	B401060	CORD,FAN,HP-75.24-A	2
22	B401107	SWITCH FAN CERAMIC	2
23	B401116	SWITCH, TOGGLE, ON/ON, 15A	1
24	B401152	OVEN CONTROL, RSS-212, 24V	1
25	B401153	SPEED DRIVER BOARD 24V	1
26	B401154	TEMP PROBE	4
27	B401155	POWER SUPPLY/TRANS. 24VAC	1
28	B401156	HEAT ELEMENT RELAYS	4
29	B401157	MOTOR CONTROL RELAY	1
30	B401162	PLUG BUTTON, 1/2"	1
31	B401163	CONTROL BOARD BODINE 24V	1

ITEM NO.	PART NUMBER	DESCRIPTION	QTY.
32	B401164	POWER SUPPLY, 24VDC	1
33	B401170	MOTOR RELAY SOCKET	1
34	B401171	SOCKET RELAY ELEMENT	4
35	B401173	SWITCH PLATE, ON/OFF U-19	1
36	B401175	CONTACTOR MANUAL. 208/240	1
37	B401188	KNOB, W/10-32 STUD PHENOLIC	4
38	B401215	MOTOR 240V DC BODINE	1
39	B401220	GUARD, FAN	2
40	B401301	11-TOOTH SPROCKET	1
41	B401304	SPROCKET, 25B24 X 3/8	1
42	B401353	JPO SPRING LOADED BEARING	2
43	B401377	PO4 18" DRIVE SHAFT	1
44	B401378	PO4 18" IDLER SHAFT	1
45	B401399	CHAIN LADDER, 21 1/4" LONG	1
46	B401422	PO6 CONTROL OVERLAY	1
47	B405011	230V CLASS B FAN MOTOR	2
48	B405013	41A INPUT MODULE	1
49	B405014	5 AMP BREAKER	2
50	B405028	68C THERMAL RESET	1
51	B405055	50A 10/3 72" COMPRESSED END	1

**SEE PAGE 1 FOR ASSEMBLY EXPLODED VIEW**