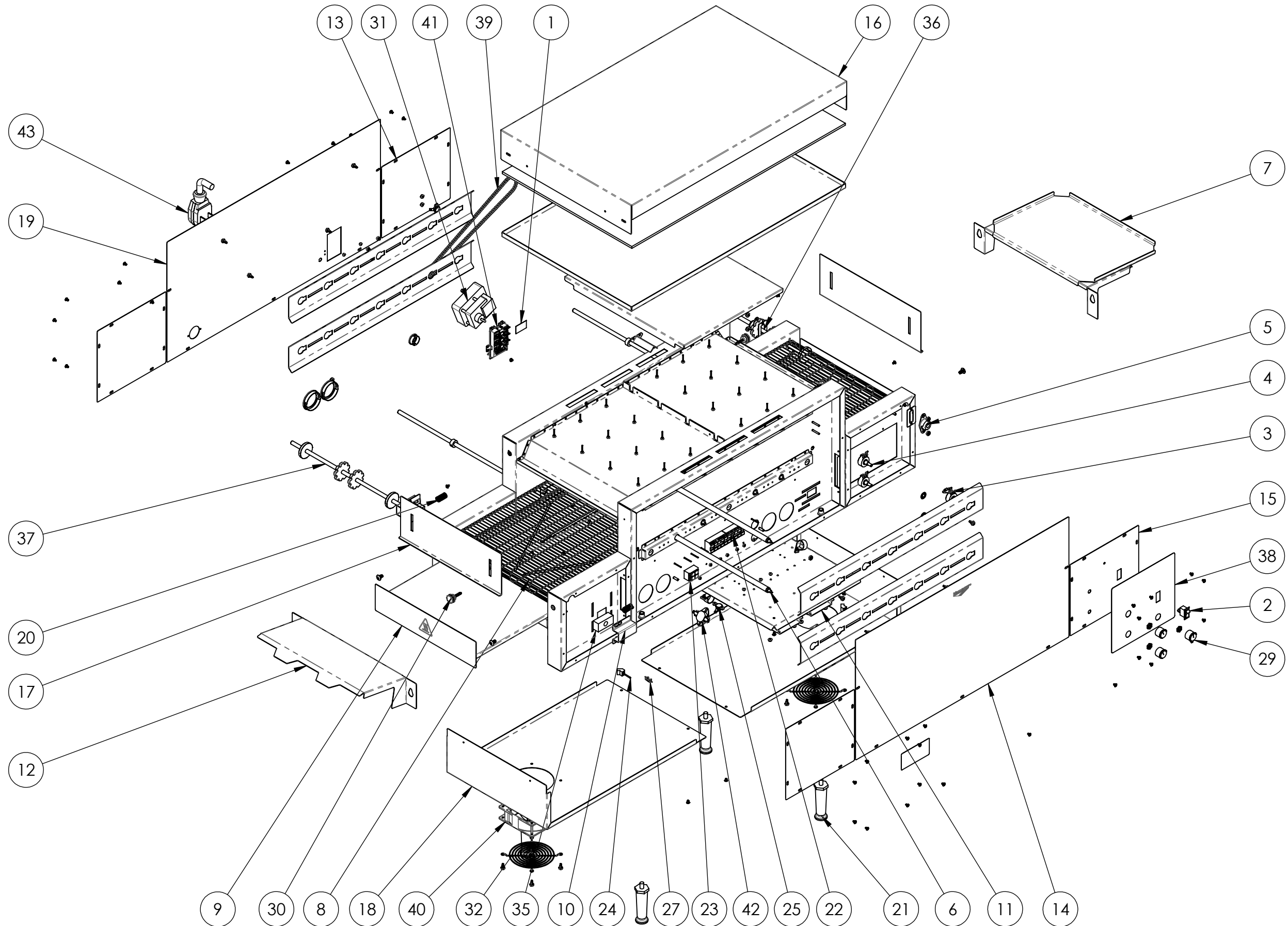




68 INCH SANDWICH OVEN 240V 14" LEFT TO RIGHT



**68 INCH SANDWICH OVEN 240V 14" LEFT TO RIGHT**

ITEM NO.	PART NUMBER	DESCRIPTION	SO4-24014L-R QTY.
1	324105	POWER CAUTION STICKER	1
2	719124	SWITCH, ROCKER SPST 10A 125V	1
3	B200913	SPEED CONTROL 1000 OHM	1
4	B200914	CONTROL, HEAT 200K OHM	2
5	B201101	3/8" BEARING ASSEMBLY	2
6	B204145	QUARTZ HEATERTUBE 15 3/8	9
7	B205104	14" UNLOAD TRAY ASSEMBLY	1
8	B205108	JPO 14" WIRE BELT	1
9	B205135	PIZZA OVEN - 14" CRUMB TRAY ASSEMBLY SO4	2
10	B305756	PIZZA OVEN - IDLER BEARING HOUSING	2
11	B305762	PIZZA OVEN - CONTROL BRACKET	2
12	B305772	14" LOAD TRAY	1
13	B305796	SMALL BLANK SIDE PANEL	3
14	B305797	LONG BLANK SIDE PANEL	1
15	B305835	CONTROL SIDE PANEL ANALOG	1
16	B305836	14" TOP COVER	1
17	B305837	JPO 14" HEAT SHUTTER	2
18	B305839	14" CONTROL BOX COVER	2
19	B305856	BLANK POWER SIDE PANEL	1
20	B400263	SPRING, .480" DIA, 1.000" LENGTH	2
21	B400301	METAL PLATED LEG 4"	4
22	B401033	TERMINAL BLOCK 5 POSITION	1
23	B401034	TERMINAL BLOCK 2 POSIITON	1
24	B401060	CORD,FAN,HP-75.24-A	2
25	B401107	SWITCH FAN CERAMIC	2
26	B401125	240V PHASE CONTROL	2
27	B401162	PLUG BUTTON, 1/2"	1
28	B401175	CONTACTOR MANUAL. 208/240	1
29	B401187	KNOB, PUSH-ON W/ SET SCREW	3
30	B401188	KNOB, W/10-32 STUD PHENOLIC	4

ITEM NO.	PART NUMBER	DESCRIPTION	SO4-24014L-R QTY.
31	B401203	DRIVE MOTOR, 208/240V REVERSED	1
32	B401220	GUARD, FAN	2
33	B401302	32-TOOTH SPROCKET	1
34	B401303	SPROCKET, 25B17 X 8MM	1
35	B401353	JPO SPRING LOADED BEARING	2
36	B401379	PO4 14" DRIVE SHAFT	1
37	B401380	PO4 14" IDLER SHAFT	1
38	B401428	CT4B CONTROL LABEL	1
39	B401460	29.75" CHAIN	1
40	B405011	230V CLASS B FAN MOTOR	2
41	B405013	41A INPUT MODULE	1
42	B405028	68C THERMAL RESET	1
43	B405055	50A 10/3 72" COMPRESSED END	1