



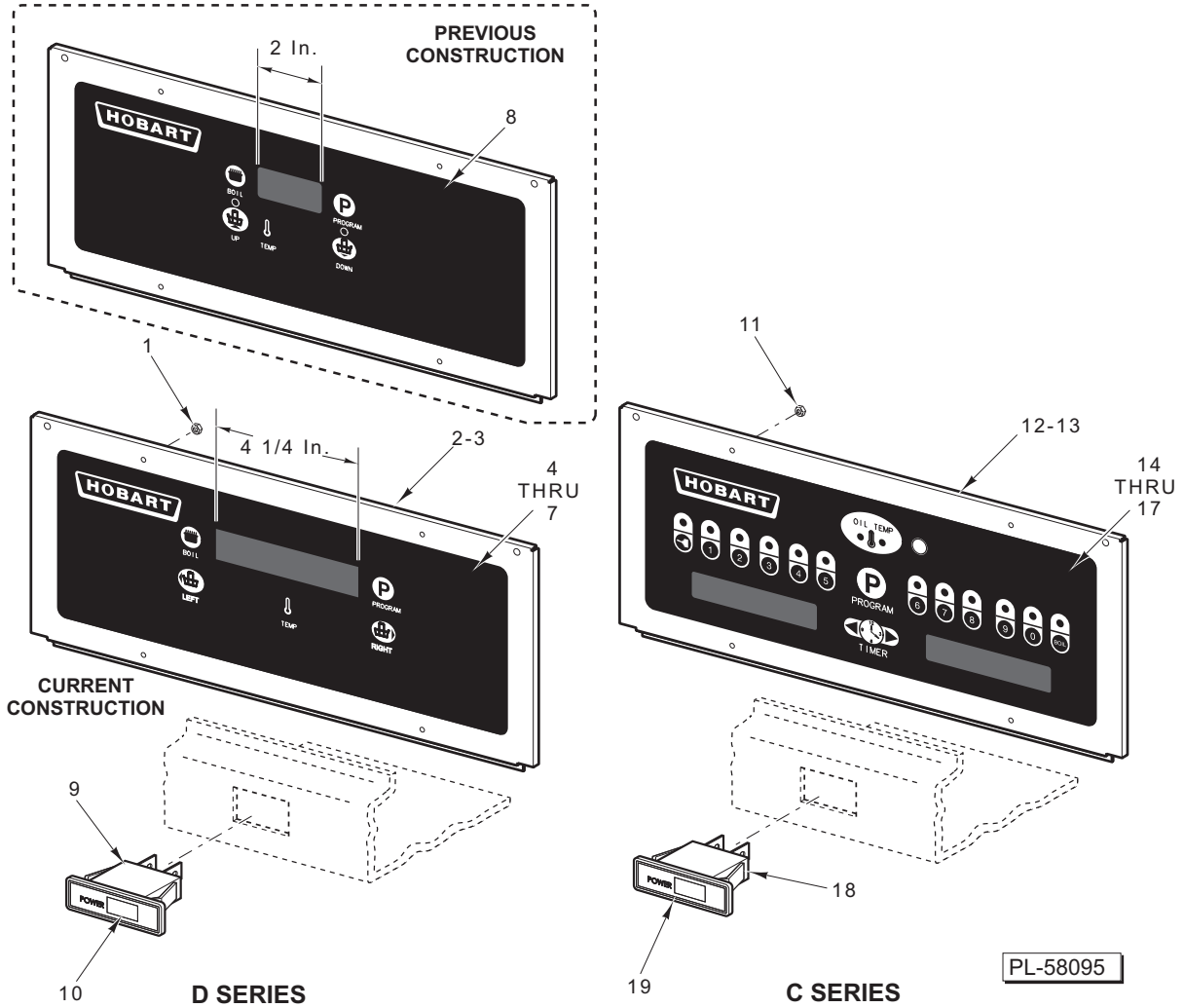
# CATALOG OF REPLACEMENT PARTS

## 1HG SERIES FRYER STAND ALONE

1HG35M	ML-136440
1HG45M	ML-136441
1HG65M	ML-136442
1HG85M	ML-136443
1HG45D	ML-136444
1HG65D	ML-136445
1HG85D	ML-136446
1HG45C	ML-136447
1HG65C	ML-136448
1HG85C	ML-136449

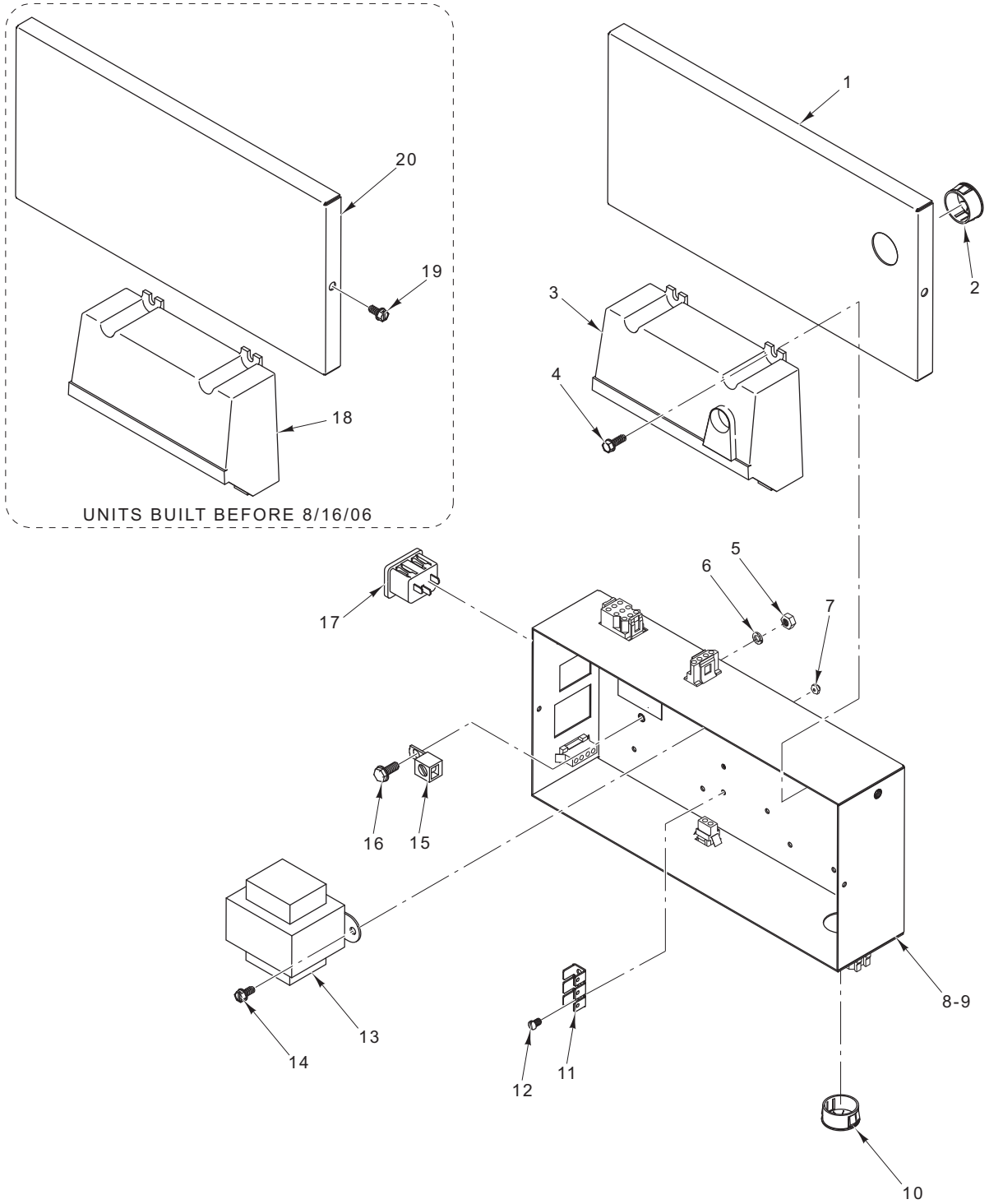
## TABLE OF CONTENTS

3	CONTROL PANEL (NCC)
5	POWER SUPPLY BOX
7	BODY UNIT (1HG45/65C & 1HGD SERIES)
9	BODY UNIT (1HG85C)
11	BODY UNIT (1HGM SERIES)
13	BURNER COMPONENTS (1HGC & 1HGD SERIES)
15	BURNER COMPONENTS (1HGM SERIES)
17	GAS INLET MANIFOLD (1HGC & 1HGD SERIES)
18	GAS INLET MANIFOLD (1HGM SERIES) (PREVIOUS CONSTRUCTION)
19	GAS INLET MANIFOLD (1HGM SERIES) (CURRENT CONSTRUCTION)
21	DRAIN ASSEMBLY
23	BASKETLIFT COMPONENTS (1HG85C)
24	OIL RETURN AND ACCESSORIES (1HG85C)



**CONTROL PANEL (NCC)**

ILLUS.	PART NO.	NAME OF PART	AMT.
	PL-58095		
1	NS-046-89	Nut Assy. 6-32 Hex .....	4
2	00-426815-000G1	Plate Assy. – Mounting (1HG45D) .....	1
3	00-426815-000G2	Plate Assy. – Mounting (1HG65/85D) .....	1
4	00-913012-00006	Control Assy. – Solid State (Boil Button) (Incls. Item 7) .....	1
5	00-497745-00002	Overlay – Hobart (Filter) (1HG45D, 1HG65D, & 1HG85D) .....	1
6	00-913012-00007	Control Assy. – Solid State (Filter Button) (Incls. Items 5) .....	1
7	00-497745-00004	Overlay – Hobart (Boil) .....	1
8	00-497421-00002	Overlay – Control Panel (Units Built Before 7/01/07) .....	1
9	00-427755-000G1	Switch Assy. – Power .....	1
10	00-428906-00001	Overlay – Power (1HG45, 1HG65, & 1HG85) .....	1
11	NS-046-89	Nut Assy. 6-32 Hex .....	4
12	00-426815-000G1	Plate Assy. – Mounting (1HG45C) .....	1
13	00-426815-000G2	Plate Assy. – Mounting (1HG65/85C) .....	1
14	00-913012-00001	Computer Cooking Assy. (Boil Button) (Incls. Item 16) .....	1
15	00-913012-00004	Computer Cooking Assy. (Filter Button) (Incls. Item 17) (1HG45C, 1HG65C, 1HG85C) .....	1
16	00-497422-00002	Overlay – Control Panel .....	1
17	00-426732-00002	Overlay – Hobart Computer .....	1
18	00-427755-000G1	Switch Assy. – Power .....	1
19	00-428906-00001	Overlay – Power (1HG45, 1HG65, & 1HG85) .....	1



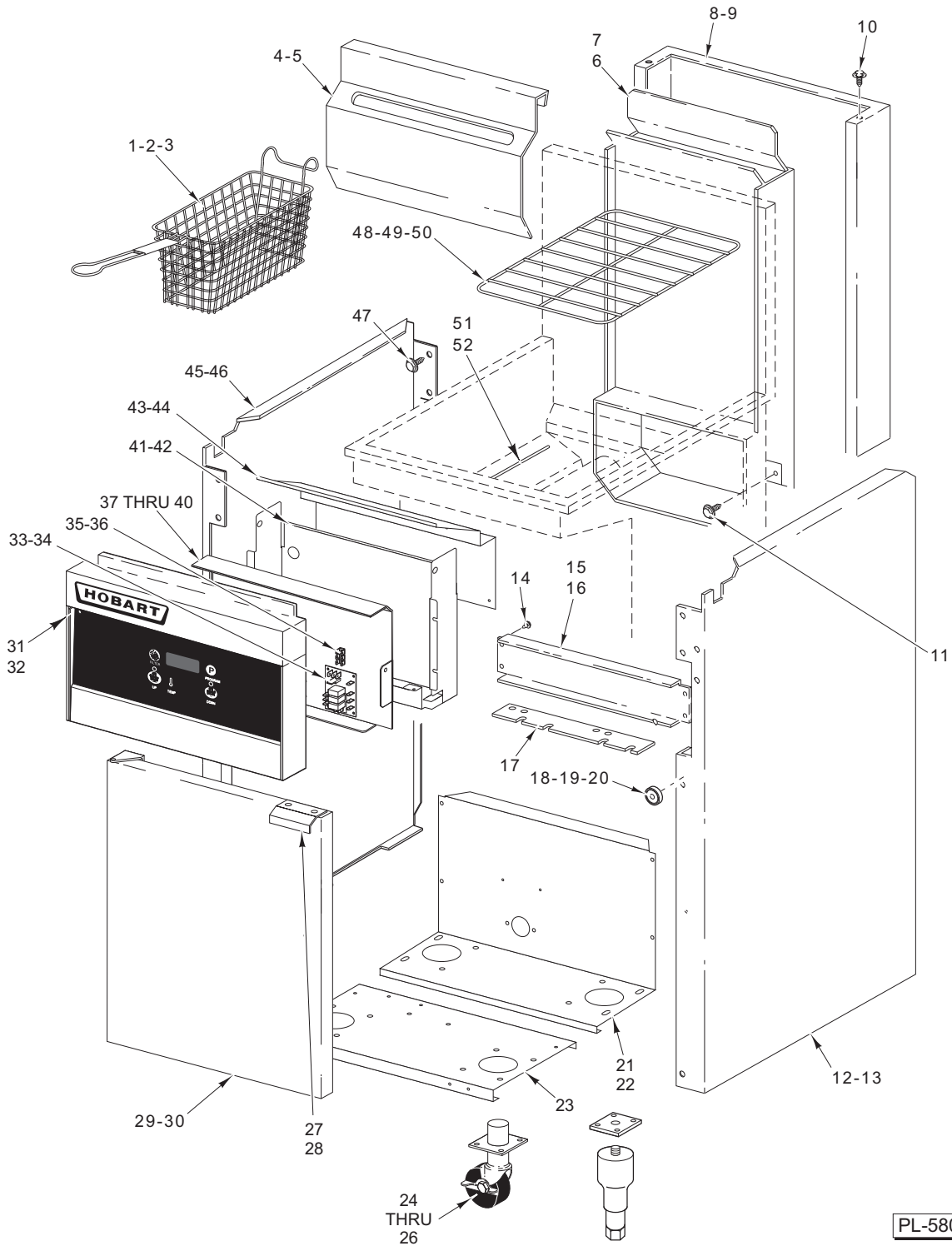
PL-57966

**POWER SUPPLY BOX**

**POWER SUPPLY BOX**

ILLUS.	PART NO.	NAME OF PART	AMT.
PL-57966			
1	00-428684-00002	Lid – Power Supply.....	1
2	FE-024-24	Bushing – Electrical Snap.....	1
3	00-857207-00001	Module – Ignition.....	1
4	SD-037-49	Self-Tapping Screw 8-18 x 1/2 Hex Washer Hd., Type AB.....	4
5	NS-044-07	Nut Assy. 8-32 Hex KEPS.....	1
6	WL-004-40	Lockwasher #10 Helical.....	1
7	NS-047-32	Lock Nut 4-40 Hex.....	2
8	00-428716-000G1	Box – Power Supply.....	1
9	00-428716-000G2	Box – Power Supply.....	1
10	FE-024-28	Bushing – Electrical Snap.....	1
11	00-419317	Lug – Terminal.....	1
12	SC-060-23	Mach. Screw 4-40 x 1/4 Slotted Rd. Hd.....	2
13	00-411500-00012	Transformer (40 Amp, 120 V.).....	1
14	SD-036-03	Self-Tapping Screw 8-18 x 3/8 Hex Washer Hd., Type AB.....	2
15	00-417856-00001	Lug – Ground.....	1
16	SD-032-07	Self-Tapping Screw 10-24 x 1/2 Hex Washer Hd., Type TT.....	1
17	00-419973-000G1	Receptacle – Male Power.....	1
*18	-	Module – Ignition (Machines With Electronic Ignition) (Units Built Before 8/16/06).....	1
19	SD-036-03	Self-Tapping Screw 8-18 x 3/8 Hex Washer Hd., Type AB (Units Built Before 8/16/06).....	2
20	00-428684-00001	Lid – Power Supply Box (Units Built Before 8/16/06).....	1

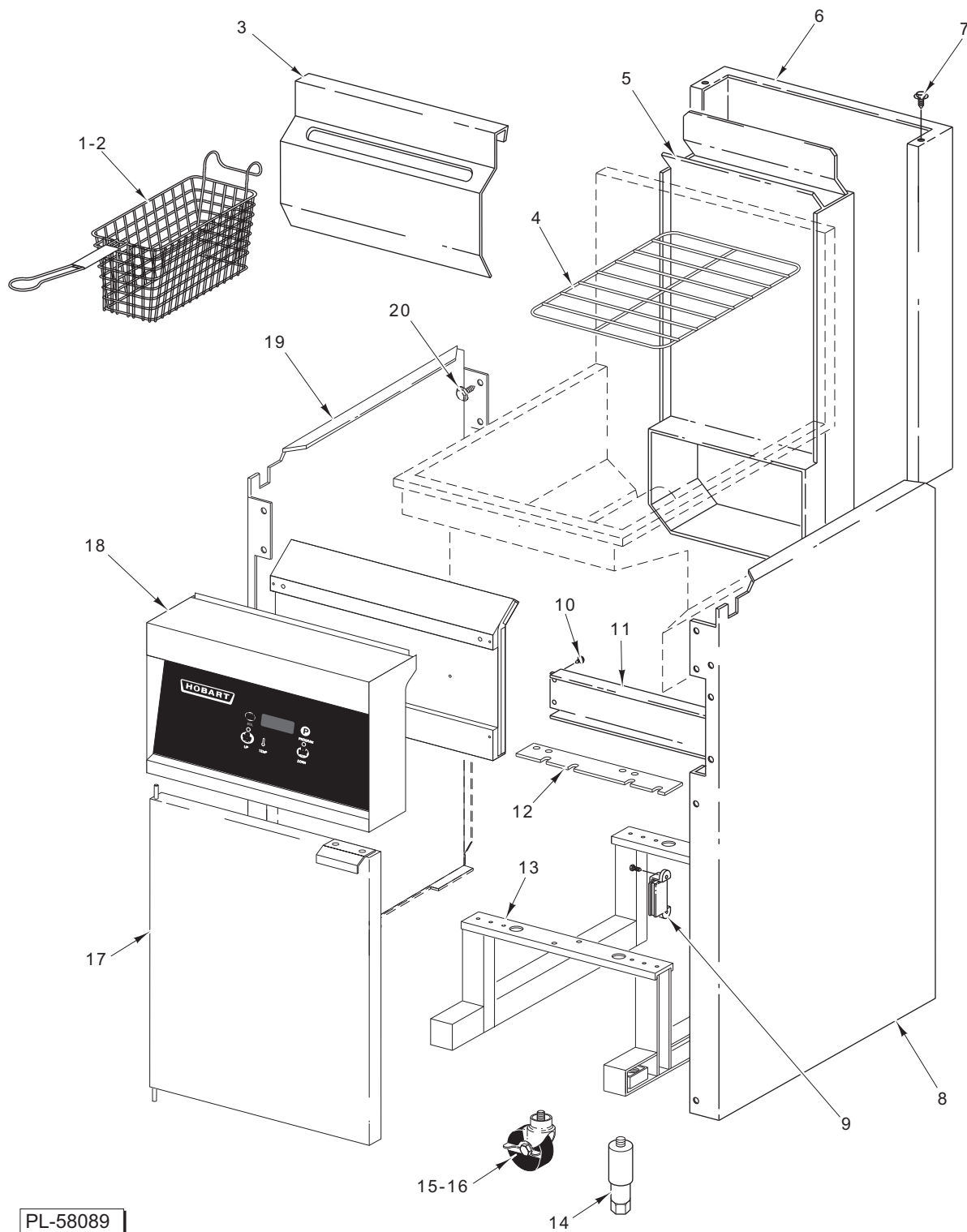
\* No longer available. To replace, order items 1, 2, & 3.



**BODY UNIT (1HG45/65C & 1HGD SERIES)**

### BODY UNIT (1HG45/65C & 1HGD SERIES)

ILLUS. PL-58090	PART NO.	NAME OF PART	AMT.
1	00-499223-00001	Basket – Twin (1HG45C & 1HG45D).....	2
2	00-499223-00002	Basket – Twin (1HG65C & 1HG65D).....	2
3	00-499223-00003	Basket – Twin (1HG85D).....	1
4	00-417056-00002	Hanger – Basket (1HG45C & 1HG45D).....	2
5	00-418321-00002	Hanger – Basket (1HG65C & 1HG65/85D).....	2
6	00-418201-000G2	Flue Assy. (4 Tube) (1HG45C & 1HG45D).....	1
7	00-418205-000G2	Flue Assy. (5 Tube) (1HG65C & 1HG65/85D).....	1
8	00-416959-00002	Wrap – Flue (3 Tube or 4 Tube) (1HG45C & 1HG45D).....	1
9	00-418336-00002	Wrap – Flue (5 Tube) (1HG65C & 1HG65/85D).....	1
10	SD-032-07	Self-Tapping Screw 10-24 x 1/2 Hex Washer Hd., Type TT.....	2
11	SD-037-70	Self-Tapping Screw 1/4-20 x 1/2 Hex Washer Hd., Type TT.....	4
12	00-419648-00001	Body – LH Side (SST) (1HG45/65C & 1HG45/65D).....	1
13	00-420596-00003	Body – LH Side (SST) (1HG85D).....	1
14	SD-032-07	Self-Tapping Screw 10-24 x 1/2 Hex Washer Hd., Type TT.....	2
15	00-428699-00001	Brace – Rear (1HG45C & 1HG45D).....	1
16	00-428749-00001	Brace – Rear (1HG65C & 1HG65/85D).....	1
17	00-428688-00001	Bracket – Power Supply Mounting.....	1
18	00-497296-00001	Magnet – Door.....	1
19	00-497296-000G2	Magnet Assy.....	1
20	RS-033-04	Rivet – Pop.....	1
21	00-497428-00001	Body – Bottom (15 1/2 In.) (1HG45).....	1
22	00-497428-00003	Body – Bottom (1HG65).....	1
23	00-497428-00004	Body – Bottom Front (1HG85D).....	1
24	00-418907-00004	Caster.....	AR
25	00-421893-00001	Mount Plate – Caster.....	AR
26	00-421893-00002	Caster 4 In. (No Brake).....	AR
27	00-419653	Handle – Door.....	1
28	RS-033-09	Rivet – Pop (0.187).....	2
29	00-499487-000G1	Door Assy. (LH) (1HG45C & 1HG45D).....	1
30	00-499487-000G5	Door Assy. (LH) (1HG65C & 1HG65D).....	1
31	00-426806-000G1	Frame – Front Assy. (1HG45C & 1HG45D).....	1
32	00-426806-000G4	Frame – Front Assy. (1HG65C & 1HG65/85D).....	1
33	00-427759-00001	Control – Interface.....	1
34	SD-024-40	Self-Tapping Screw 6-32 x 5/8 Phil. Pan Hd., Type TT.....	4
35	00-419317	Terminal – Stationary.....	1
36	SC-060-23	Mach. Screw 4-40 x 1/4 Slotted Rd. Hd.....	2
37	00-428541-00001	Plate – Control Mounting (1HG45C & 1HG45D).....	1
38	00-428690-00001	Plate – Control Mounting (1HG65C & 1HG65/85D).....	1
39	00-428700-000G1	Control Assy. – Box (1HG45C, 1HG45D & 1HG45M).....	1
40	00-428700-000G2	Control Assy. – Box (1HG65C, 1HG65D).....	1
41	00-428542-00001	Deflector Assy. (1HG45C & 1HG45D).....	1
42	00-428689-00001	Deflector Assy. (1HG65C & 1HG65/85D).....	1
43	00-428548-00001	Heat Shield (1HG45C & 1HG45D).....	1
44	00-428548-00002	Heat Shield (1HG65/85C & 1HG65/85D).....	1
45	00-419648-00002	Body – RH Side (SST) (1HG45/65C & 1HG45/65D).....	1
46	00-420596-00004	Body – RH Side (SST) (1HG85D Series).....	1
47	SD-036-03	Self-Tapping Screw 8-18 x 3/8 Slotted Hex Washer Hd., Type AB.....	AR
48	00-427883-00002	Screen – Basket Support (1HG45C & 1HG45D).....	1
49	00-427883-00003	Screen – Basket Support (1HG65C & 1HG65D).....	1
50	00-427883-00004	Screen – Basket Support (1HG85D).....	1
51	00-419592-00001	Clip – Thermistor Probe.....	1
52	00-419379-00001	Probe – Thermistor.....	1
	00-417063-00001	Strap – Tie Down (Previous Construction).....	1

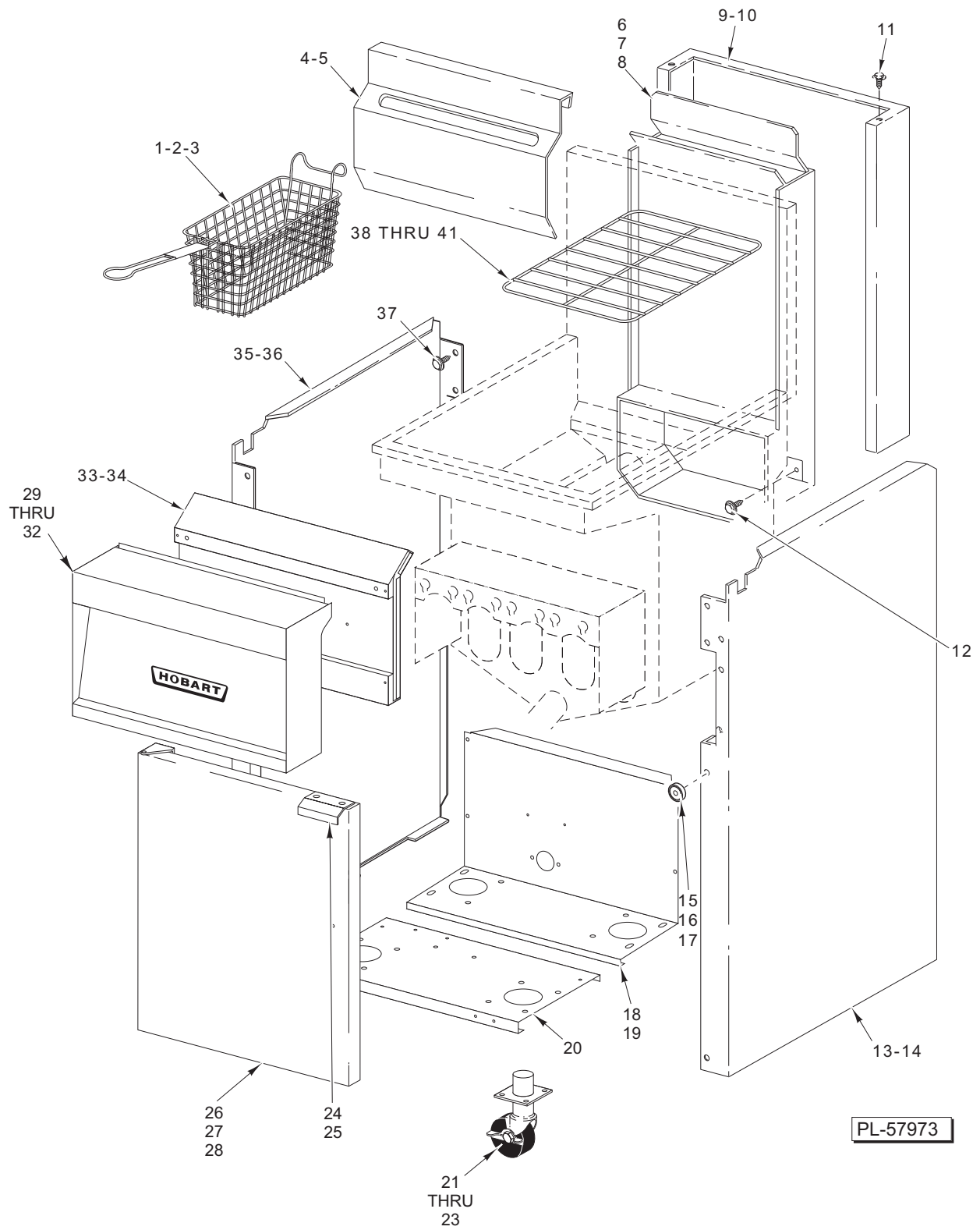


**BODY UNIT (1HG85C)**



### BODY UNIT (1HG85C)

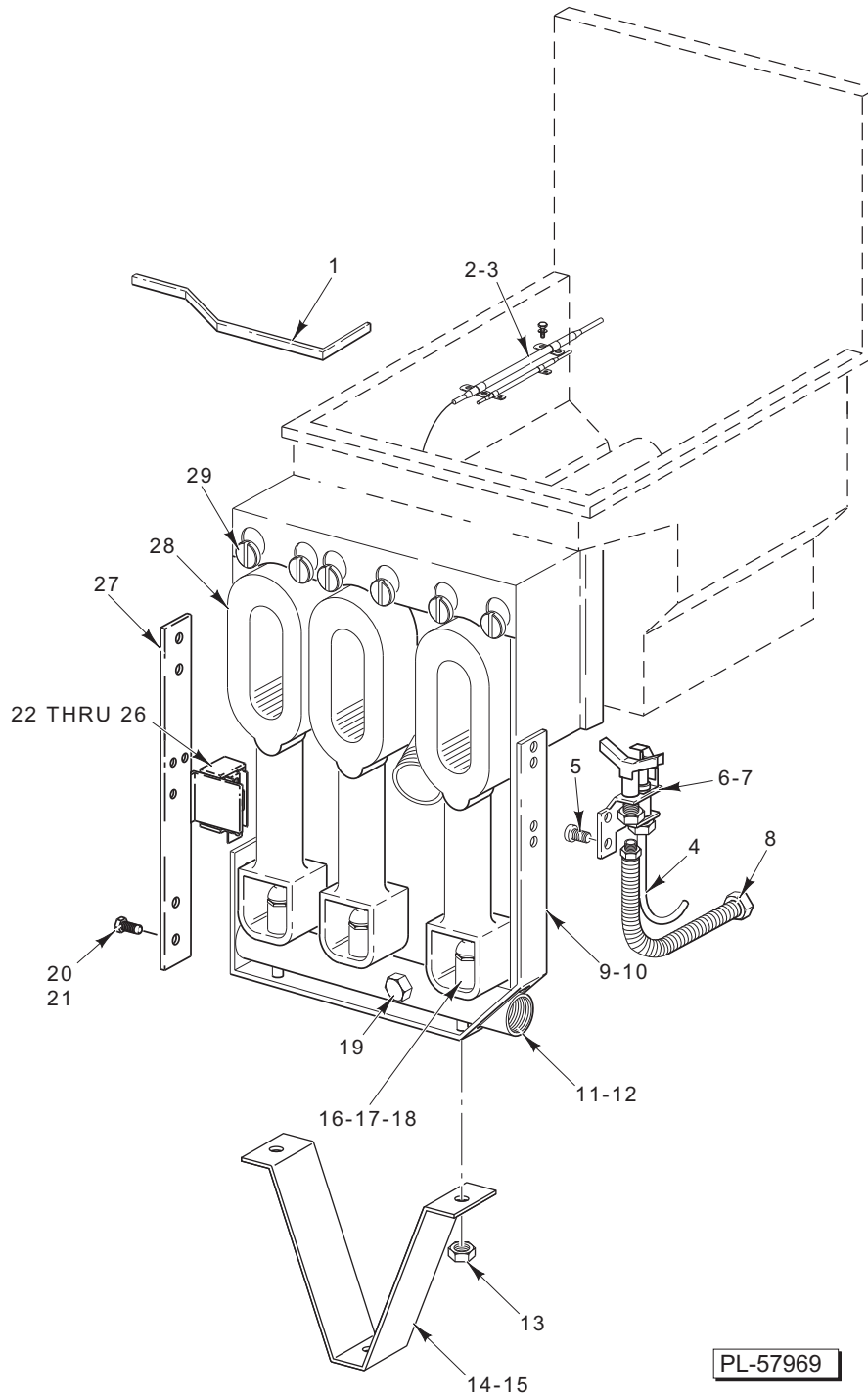
ILLUS. PL-58089	PART NO.	NAME OF PART	AMT.
1	00-499223-00003	Basket – Twin.....	AR
2	00-499223-00011	Basket – Single.....	1
3	00-418321-00002	Hanger – Basket.....	1
4	00-427883-00004	Rack – Basket Support.....	1
5	00-418205-000G2	Flue Assy.....	1
6	00-418126-000G2	Wrap – Flue.....	1
7	SD-032-07	Self-Tapping Screw 10-24 x 1/2 Hex Washer Hd., Type TT.....	AR
8	00-419777-00004	Body – RH Side.....	1
9	00-497296-000G2	Magnet – Door.....	1
10	SD-032-07	Self-Tapping Screw 10-24 x 1/2 Hex Washer Hd., Type TT.....	AR
11	00-428749-00001	Bracket – Rear Support.....	1
12	00-428688-00001	Bracket – Power Supply Mounting.....	1
13	00-420839-00002	Base Assy.....	1
14	00-413112-00007	Leg (6 1/4 In.) (SST).....	4
15	00-418907-00001	Caster – Adjustable (Swivel).....	2
16	00-418907-00003	Caster – Plate Mount (4 In.).....	2
17	00-499487-000G7	Door Assy. – With Hinge (LH).....	1
18	00-426806-000G4	Frame – Front Assy.....	AR
19	00-419777-00003	Body – LH Side.....	1
20	SD-037-70	Self-Tapping Screw 1/4-20 x 1/2 Hex Washer Hd., Type AB.....	AR



**BODY UNIT (1HGM SERIES)**

### BODY UNIT (1HGM SERIES)

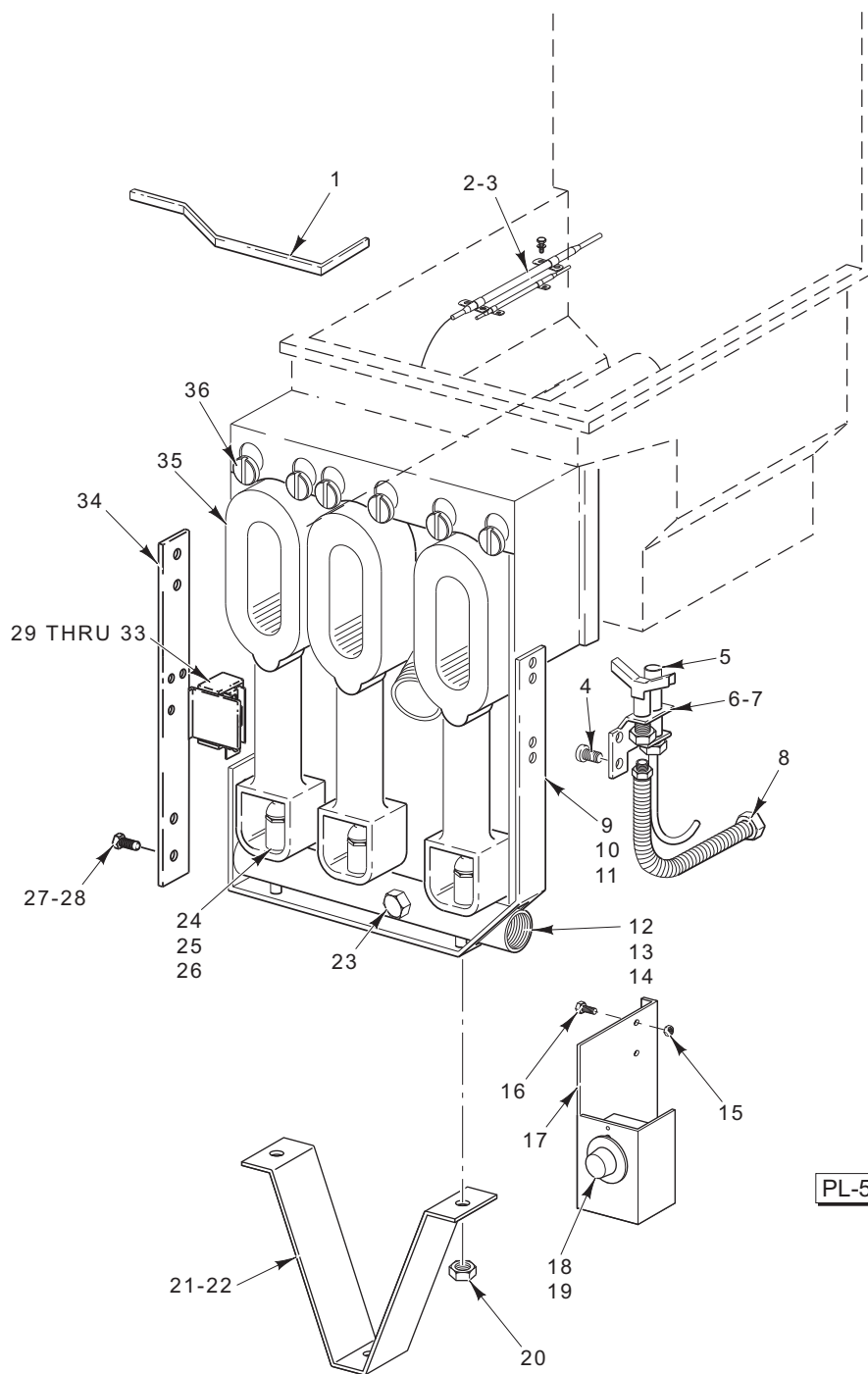
ILLUS. PL-57973	PART NO.	NAME OF PART	AMT.
1	00-499223-00001	Basket – Twin (1HG35M & 1HG45M).....	2
2	00-499223-00002	Basket – Twin (1HG65M).....	2
3	00-499223-00003	Basket – Twin (1HG85M).....	1
4	00-417056-00002	Hanger – Basket (1HG35M & 1HG45M) .....	2
5	00-418321-00002	Hanger – Basket (1HG65M & 1HG85M) .....	2
6	00-416994-000G2	Flue Assy. (3 Tube) (1HG35M) .....	1
7	00-418201-000G2	Flue Assy. (4 Tube) (1HG45M) .....	1
8	00-418205-000G2	Flue Assy. (5 Tube) (1HG65M & 1HG85M).....	1
9	00-416959-00002	Wrap – Flue (3 Tube or 4 Tube) (1HG35M & 1HG45M) .....	1
10	00-418336-00002	Wrap – Flue (5 Tube) (1HG65M & 1HG85M) .....	1
11	SD-032-07	Self-Tapping Screw 10-24 x 1/2 Hex Washer Hd., Type TT .....	2
12	SD-037-70	Self-Tapping Screw 1/4-20 x 1/2 Hex Washer Hd., Type TT .....	4
13	00-419648-00001	Body – LH Side (SST) (1HG35M, 1HG45M, & 1HG65M) .....	1
14	00-420596-00003	Body – LH Side (SST) (1HG85M).....	1
15	00-497296-00001	Magnet – Door .....	1
16	RS-033-04	Rivet – Pop .....	1
17	00-497296-000G1	Magnet Assy.....	1
18	00-497428-00001	Body – Bottom (1HG35M & 1HG45M).....	1
19	00-497428-00003	Body – Bottom (1HG65M & 1HG85M).....	1
20	00-497428-00004	Body – Bottom (1HG65M & 1HG85M).....	1
21	00-418907-00004	Caster .....	AR
22	00-421893-00001	Mount Plate – Caster .....	AR
23	00-421893-00002	Caster 4 In. (No Brake).....	AR
24	00-419653	Handle – Door.....	1
25	RS-033-09	Rivet – Pop (0.187).....	2
26	00-499487-000G1	Door Assy. (LH) (1HG35M & 1HG45M) .....	1
27	00-499487-000G5	Door Assy. (LH) (1HG65M & 1HG85M) .....	1
28	00-499487-000G7	Door Assy. – With Hinge (LH) (1HGM35) .....	1
29	00-428116-000G1	Frame – Front Assy. (1HG35M & 1HG45M) .....	1
30	00-428116-000G2	Frame – Front Assy. (1HG65M & 1HG85M) .....	1
31	00-417700-00002	Nameplate (6 In.) .....	1
32	NS-047-79	Lock Nut 3/16 .....	2
33	00-418379-000G1	Heat Shield (1HG35M & 1HG45M).....	1
34	00-418324-000G1	Heat Shield (1HG65M & 1HG85M).....	1
35	00-419648-00002	Body – RH Side (SST) (1HG35M, 1HG45M, & 1HG65M).....	1
36	00-420596-00004	Body – RH Side (SST) (1HG85M).....	1
37	SD-036-03	Self-Tapping Screw 8-18 x 3/8 Slotted Hex Washer Hd., Type AB.....	AR
38	00-427883-00001	Screen – Basket Support (1HG35M).....	1
39	00-427883-00002	Screen – Basket Support (1HG45M) .....	1
40	00-427883-00003	Screen – Basket Support (1HG65M).....	1
41	00-427883-00004	Screen – Basket Support (1HG85M).....	1
	00-417063-00001	Strap – Tie Down (Previous Construction).....	AR



**BURNER COMPONENTS (1HGC & 1HGD SERIES)**

**BURNER COMPONENTS (1HGC & 1HGD SERIES)**

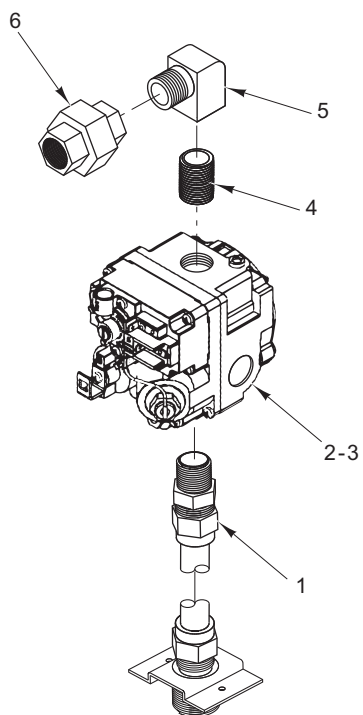
ILLUS. PL-57969	PART NO.	NAME OF PART	AMT.
1	00-409300-00005	Rod – Clean-Out.....	1
2	00-417522-00001	Clip – Capillary.....	2
3	SD-035-02	Self-Tapping Screw 8-18 x 3/8 Hex Washer Hd., Type AB.....	4
4	00-419359	Cable – Spark Ignitor.....	1
5	SC-018-32	Mach. Screw 8-32 x 3/8 Pan Hd.....	2
6	00-419316-00001	Pilot (NAT Gas) (W/Electronic Ignition).....	1
7	00-419316-00002	Pilot (LP Gas) (W/Electronic Ignition).....	1
8	00-426505-00023	Tube – Flex 1/4 O.D. x 23 In. Lg. ....	1
9	00-418211-00001	Hanger – Manifold (4 Tube).....	1
10	00-418317-00001	Hanger – Manifold (5 Tube).....	1
11	00-418212-00001	Manifold – Burner (4 Tube).....	1
12	00-418318-00001	Manifold – Burner (5 Tube).....	1
13	NS-047-72	Lock Nut 1/4-20.....	2
14	00-420561-00001	Bracket – Support (1HG45C & 1HG45D).....	1
15	00-420562-00001	Bracket – Support (1HG65/85C & 1HG65/85D).....	1
16	00-010901-00039	Orifice – Spud (NAT Gas) (Sea Level – 2000 Ft.).....	AR
17	00-010901-00052	Orifice – Spud (LP Gas) (Sea Level – 3499 Ft.).....	AR
18	00-410695-00001	Extension – Orifice.....	AR
19	FP-085-53	Pipe Plug 1/8.....	1
20	SD-015-24	Self-Tapping Screw 1/4-20 x 1/2 Hex Washer Hd., Type TT.....	AR
21	NS-044-14	Nut – 1/4-20 Hex KEPS.....	AR
22	00-419548	Bracket – Hi-Limit.....	1
23	SD-037-70	Self-Tapping Screw 1/4-20 x 1/2 Hex Washer Hd., Type AB.....	4
24	NS-046-52	Nut – 1/4-20 Hex KEPS.....	4
25	SD-036-80	Self-Tapping Screw 8-32 x 3/8 Hex Washer Hd., Type TT.....	2
26	00-410840-00002	Box – Control With Stuffing.....	1
27	00-417714-00001	Extension – Hanger.....	1
28	00-410681-00001	Burner.....	AR
29	00-428035-00001	Bolt – Shoulder.....	AR



**BURNER COMPONENTS (1HGM SERIES)**

**BURNER COMPONENTS (1HGM SERIES)**

ILLUS. PL-57968	PART NO.	NAME OF PART	AMT.
1	00-409300-00005	Rod – Clean-Out.....	1
2	00-417522-00001	Clip – Capillary.....	2
3	SD-035-02	Self-Tapping Screw 8-18 x 3/8 Hex Washer Hd., Type AB.....	4
4	SC-018-32	Mach. Screw 8-32 x 3/8 Pan Hd.....	2
5	00-410839-00004	Thermopile – Millivolt.....	2
6	00-412212-00007	Pilot (NAT Gas).....	1
7	00-412212-00002	Pilot (LP Gas).....	1
8	00-426505-00023	Tube – Flex 1/4 O.D. x 23 In. Lg.....	1
9	00-418208-00001	Hanger – Manifold (1HG35M).....	1
10	00-418211-00001	Hanger – Manifold (1HG45M).....	1
11	00-418317-00001	Hanger – Manifold (1HG65/85M).....	1
12	00-418209-00001	Manifold – Burner (1HG35M).....	1
13	00-418212-00001	Manifold – Burner (1HG45M).....	1
14	00-418318-00001	Manifold – Burner (1HG65/85M).....	1
15	NS-046-52	Nut 1/4-20 Hex.....	6
16	SD-037-70	Self-Tapping Screw 1/4-20 x 1/2 Hex Washer Hd., Type TT.....	2
17	00-497089-00001	Bracket – Control.....	1
18	00-408659-00005	Knob – Thermostat.....	1
19	00-411506-00013	Thermostat – Reed.....	1
20	NS-047-72	Lock Nut 1/4-20.....	2
21	00-420561-00001	Bracket – Support (1HG35/45M).....	1
22	00-420562-00001	Bracket – Support (1HG65/85M).....	1
23	FP-085-53	Pipe Plug 1/8.....	1
24	00-010901-00039	Orifice – Spud (NAT Gas) (Sea Level – 2000 Ft.).....	AR
25	00-010901-00052	Orifice – Spud (LP Gas) (Sea Level – 3499 Ft.).....	AR
26	00-410695-00001	Extension – Orifice.....	AR
27	SD-015-24	Self-Tapping Screw 1/4-20 x 1/2 Hex Washer Hd., Type TT.....	AR
28	NS-044-14	Nut – 1/4-20 Hex KEPS.....	AR
29	00-419548	Bracket – Hi-Limit.....	1
30	SD-037-70	Self-Tapping Screw 1/4-20 x 1/2 Hex Washer Hd., Type AB.....	4
31	NS-046-52	Nut – 1/4-20 Hex KEPS.....	4
32	SD-036-80	Self-Tapping Screw 8-32 x 3/8 Hex Washer Hd., Type TT.....	2
33	00-410840-00002	Box – Control With Stuffing.....	1
34	00-417714-00001	Extension – Hanger.....	1
35	00-410681-00001	Burner.....	AR
36	00-428035-00001	Bolt – Shoulder.....	AR



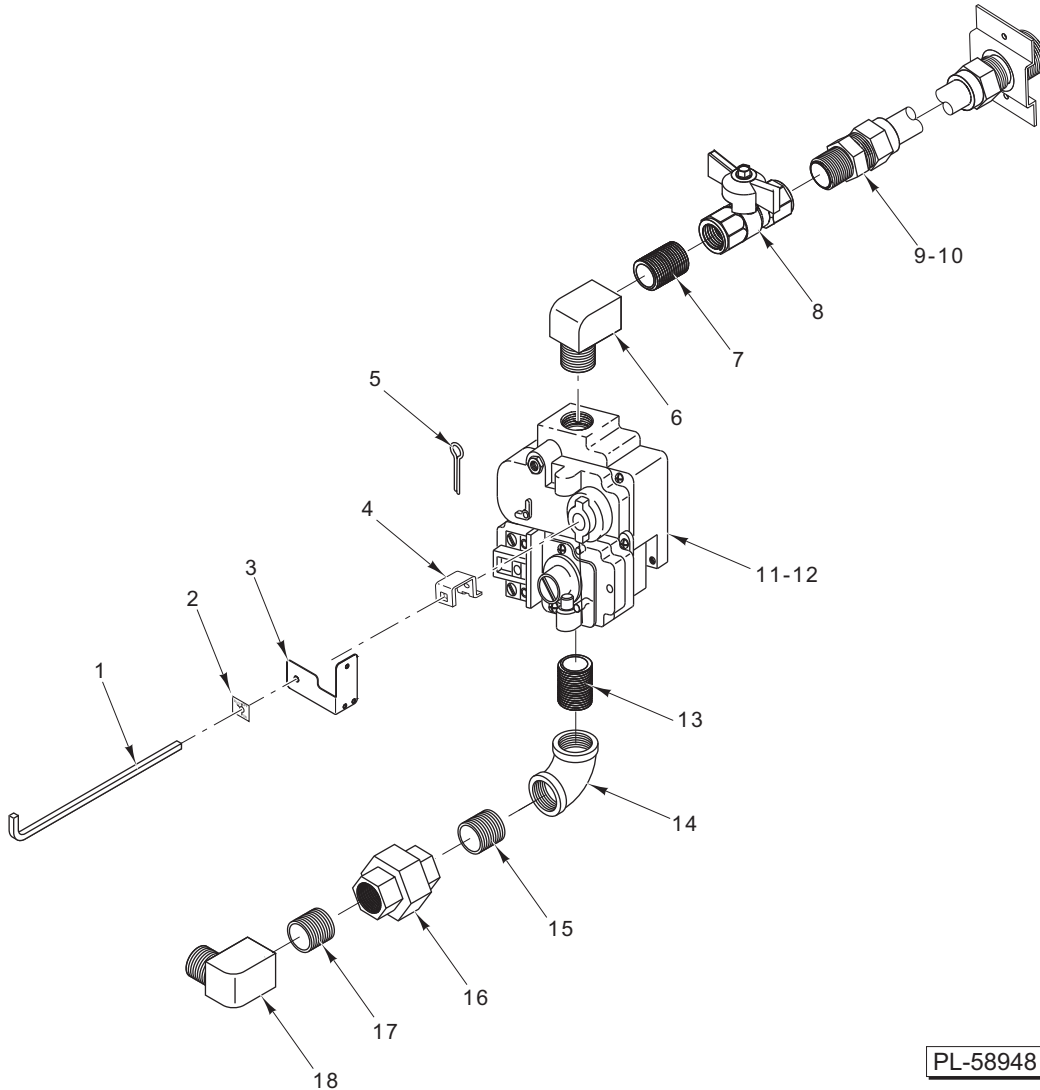
PL-57972

**GAS INLET MANIFOLD (1HGC & 1HGD SERIES)**



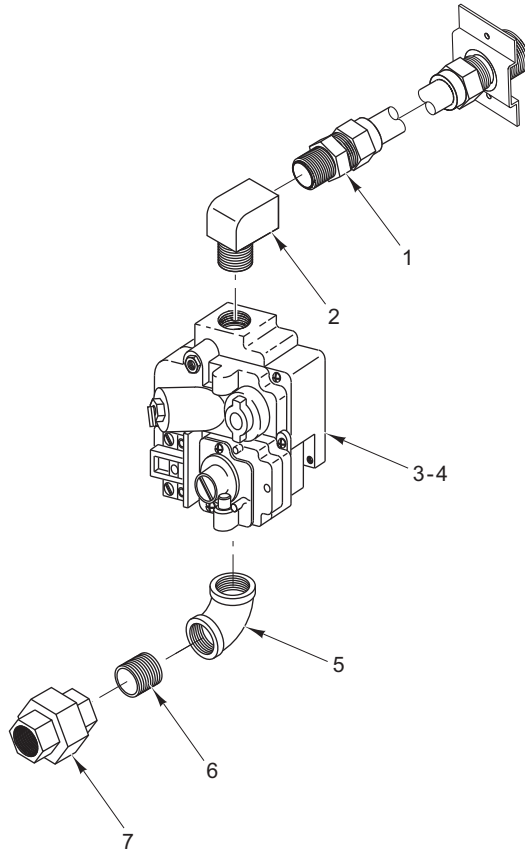
**GAS INLET MANIFOLD (1HGC & 1HGD SERIES)**

ILLUS.	PART NO.	NAME OF PART	AMT.
PL-57972			
1	00-427882-000G3	Gas Inlet (1HG65/85C & 1HG65/85D).....	1
2	00-410841-00028	Valve – Combination (NAT) (Electronic Ignition).....	1
3	00-410841-00029	Valve – Combination (LP) (Electronic Ignition) .....	1
4	FP-035-95	Pipe 1/2 x 2 TBE.....	1
5	FP-013-17	Elbow – Street 1/2 x 90 Deg. (Brass) .....	1
6	FP-022-11	Union – Pipe .....	1



**GAS INLET MANIFOLD (1HGM SERIES) (PREVIOUS CONSTRUCTION)**

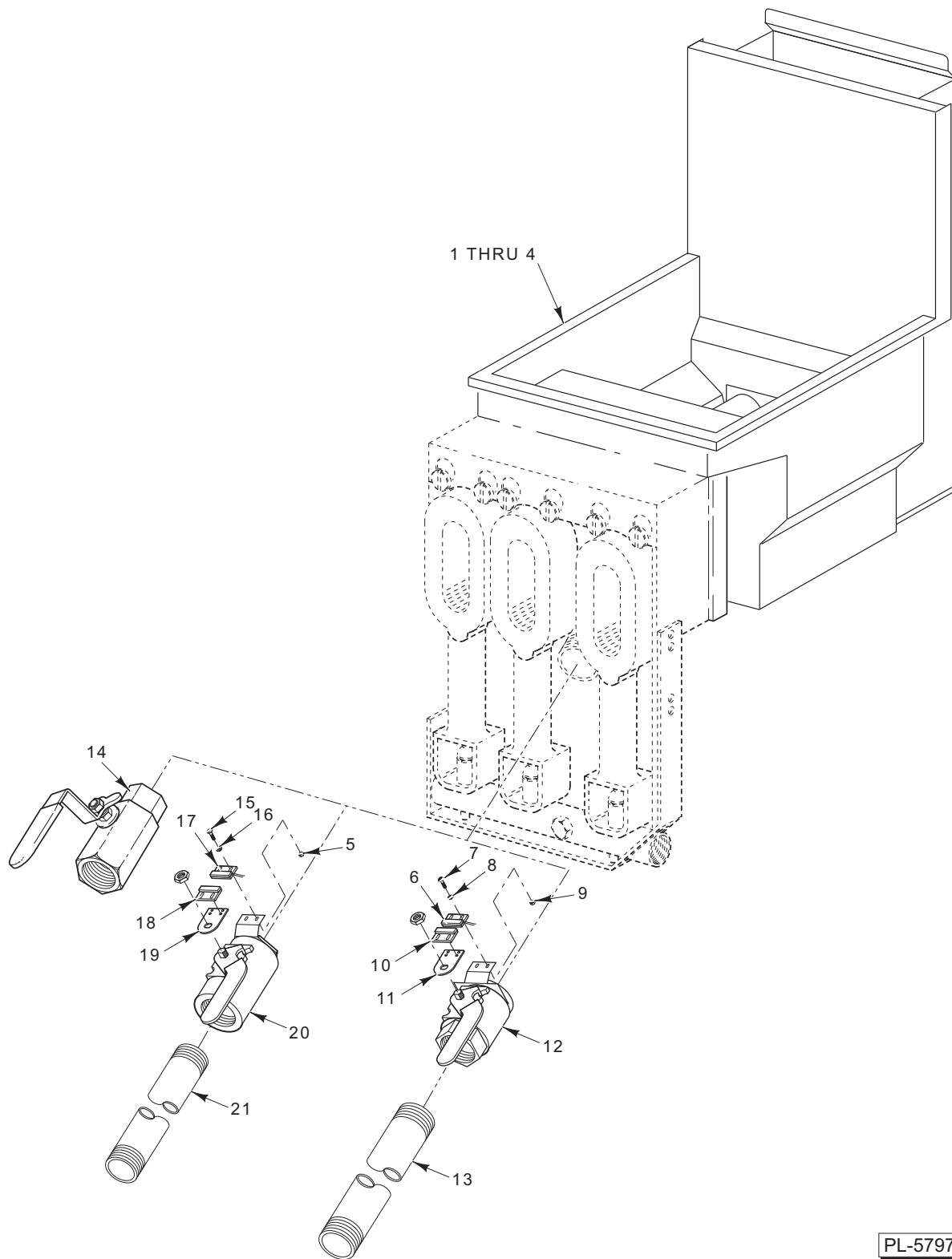
ILLUS.	PART NO.	NAME OF PART	AMT.
PL-58948			
1	00-413433-00006	Lever – Valve .....	1
2	00-417896-00001	Plate – Control Valve .....	1
3	00-428755-00002	Bracket – Pilot Lever.....	1
4	00-412080-00001	Adapter – Knob (Use Existing Screw Provided With Knob).....	1
5	PC-003-38	Pin – Cotter.....	1
6	FP-086-74	Elbow – Street 1/2 x 90 Deg. (Brass).....	1
7	FP-035-91	Pipe 1/2 x 1 1/8 TBE.....	1
8	00-428472-00001	Valve – Ball.....	1
9	00-427882-000G1	Gas Inlet (1HG35M, 1HG45M, & 1HG65M) .....	1
10	00-427882-000G2	Gas Inlet (1HG85M).....	1
11	00-410841-00022	Valve – Combination (NAT) (Manual Ignition).....	1
12	00-410841-00023	Valve – Combination (LP) (Manual Ignition) .....	1
13	FP-035-95	Pipe 1/2 x 2 TBE.....	1
14	FP-077-68	Elbow – Pipe 1/2 x 90 Deg. ....	1
15	FP-035-94	Pipe 1/2 x 1 TBE.....	1
16	FP-022-11	Union – Pipe .....	1
17	FP-035-91	Pipe 1/2 x 1 1/8 TBE.....	1
18	FP-086-74	Elbow –Street 1/2 x 90 Deg. (Brass).....	1



PL-58036

**GAS INLET MANIFOLD (1HGM SERIES) (CURRENT CONSTRUCTION)**

ILLUS.	PART NO.	NAME OF PART	AMT.
PL-58036			
1	00-427882-000G3	Gas Inlet .....	1
2	FP-013-17	Elbow – Street 1/2 x 90 Deg.....	1
3	00-410841-00022	Valve – Combination (NAT) (Manual Ignition).....	1
4	00-410841-00023	Valve – Combination (LP) (Manual Ignition) .....	1
5	FP-013-17	Elbow – Pipe 1/2 x 90 Deg. ....	1
6	FP-035-91	Pipe 1/2 x 1 1/8 TBE.....	1
7	FP-022-11	Union – Pipe .....	1

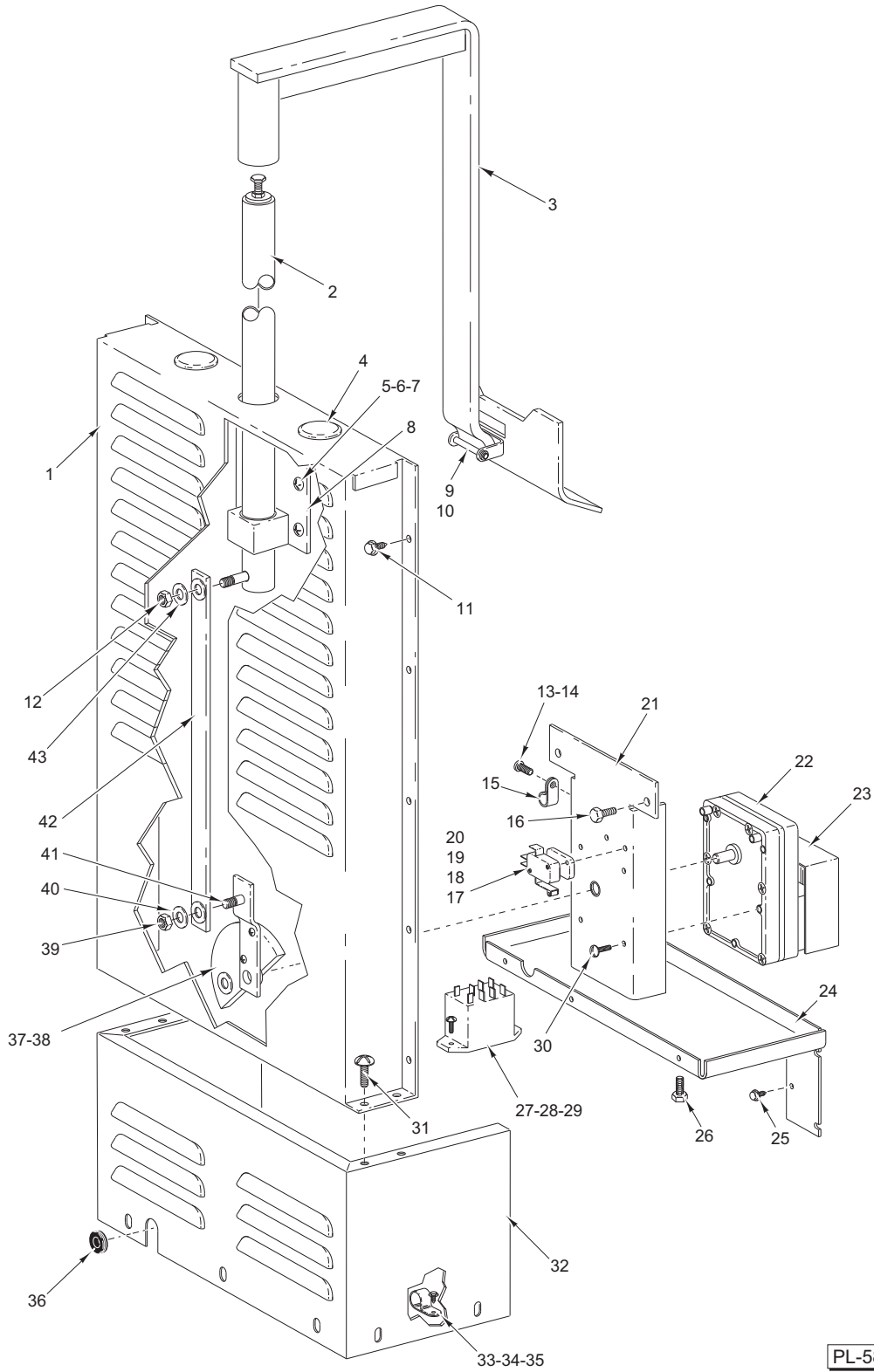


PL-57975

**DRAIN ASSEMBLY**

## DRAIN ASSEMBLY

ILLUS.	PART NO.	NAME OF PART	AMT.
PL-57975			
1	00-499700-000G2	Tank Assy. (1HG35M) (SST).....	1
2	00-499701-000G2	Tank Assy. (1HG45 Series) (SST).....	1
3	00-499702-000G2	Tank Assy. (1HG65 Series) (SST).....	1
4	00-499703-000G2	Tank Assy. (1HG85 Series) (SST).....	1
5	NS-044-01	Nut Assy. 4-40 KEPS .....	4
6	00-426805-000G1	Switch Assy. (1HG85C/D).....	1
7	SC-018-55	Mach. Screw 10-32 x 7 <sup>3</sup> / <sub>4</sub> Rd. Slotted Hd. ....	4
8	WL-003-03	Lockwasher Helical 4 .....	4
9	NS-044-01	Nut Assy. 4-40 KEPS .....	4
10	00-426801-00002	Switch – Mounted (1HG85C/D).....	1
11	00-426798-00001	Plate – Switch (1HG85C/D).....	1
12	00-426803-000G2	Valve Assy. ....	1
13	FP-079-94	Pipe 1 <sup>1</sup> / <sub>4</sub> x 8 (1HG85 Series).....	1
14	00-414212-00006	Valve – Ball .....	1
15	SC-018-55	Mach. Screw 10-32 x 7 <sup>3</sup> / <sub>4</sub> Rd. Slotted Hd. ....	4
16	WL-003-03	Lockwasher Helical 4 .....	4
17	00-426805-000G1	Switch Assy. (1HG45C/D & 1HG65C/D).....	1
18	00-426801-00002	Switch – Mounted (1HG45C/D & 1HG65C/D).....	1
19	00-426798-00001	Plate – Switch (1HG45C/D & 1HG65C/D).....	1
20	00-426803-000G2	Valve Assy. ....	1
21	FP-085-74	Pipe 1 <sup>1</sup> / <sub>4</sub> x 6 <sup>3</sup> / <sub>4</sub> (1HG65C, 1HG65D, 1HG65M 1HG85C, & 1HG85D).....	1
	FP-028-14	Plug – Pipe 1/2 .....	1
	00-417039-00001	Clip – Drain Extension .....	1
	00-499486-00001	Clip – Drain Pipe.....	1



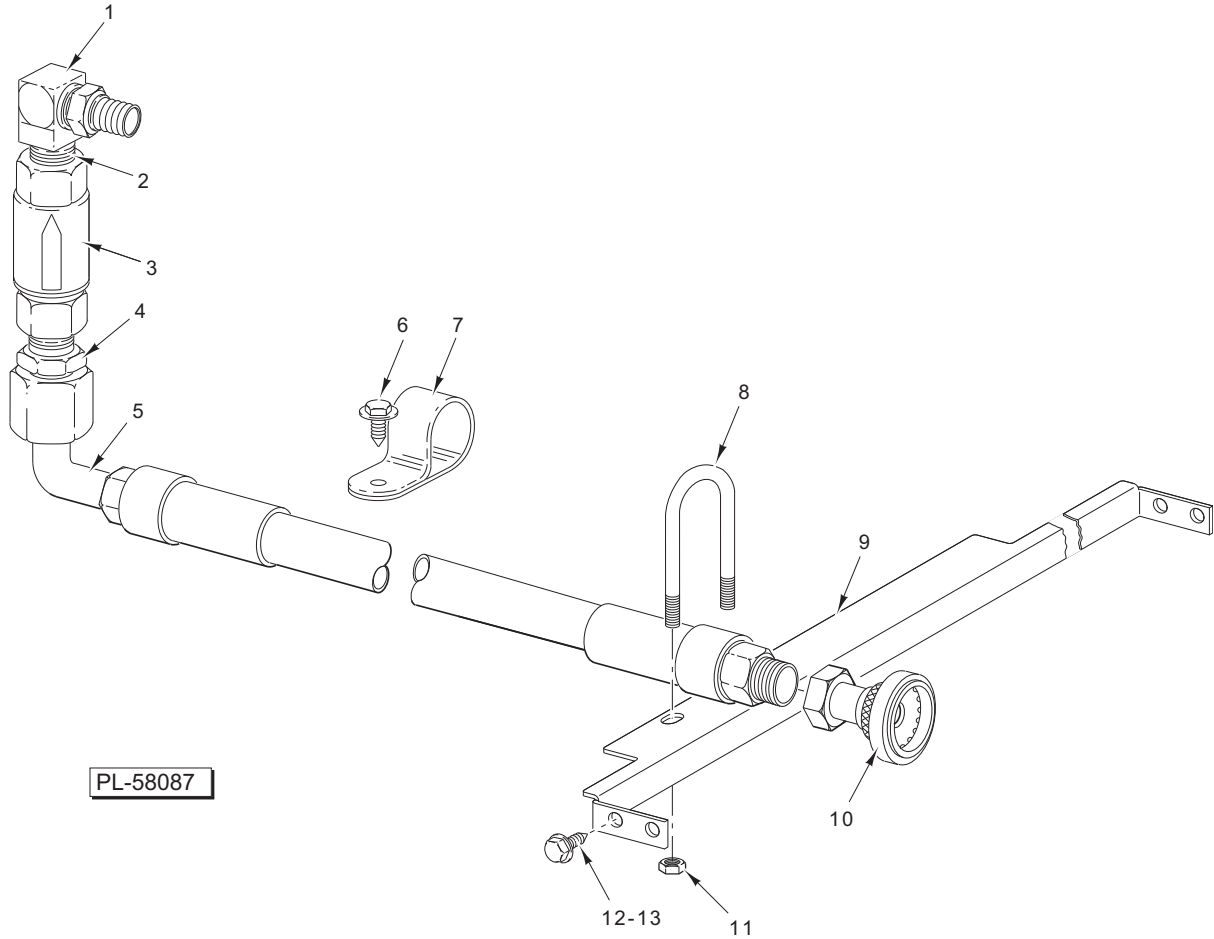
PL-58086

**BASKETLIFT COMPONENTS (1HG85C)**

## BASKETLIFT COMPONENTS (1HG85C)

ILLUS. PL-58086	PART NO.	NAME OF PART	AMT.
1	00-418511-00001	Wrap – Top.....	1
2	00-418503-00001	Tube.....	1
3	00-426006-000G2	Arm – Basket Assy. (Incls. Items 9 & 10).....	1
4	PB-004-04	Plug Button 1 <sup>1</sup> / <sub>4</sub> .....	2
5	SD-032-07	Self-Tapping Screw 10-24 x 1 <sup>1</sup> / <sub>2</sub> Hex Washer Hd., Type TT.....	2
6	WS-004-33	Washer.....	6
7	NS-047-73	Lock Nut 5 <sup>5</sup> / <sub>16</sub> -18 Hex (SST).....	6
8	00-418478-000G1	Bearing Support Assy.....	1
9	00-418487-00001	Roller.....	1
10	00-418488-00001	Pin – Roller.....	1
11	SD-036-03	Self-Tapping Screw 8-18 x 3 <sup>3</sup> / <sub>8</sub> Slotted Hex Washer Hd., Type AB.....	10
12	NS-047-73	Lock Nut 5 <sup>5</sup> / <sub>16</sub> -18 Hex.....	1
13	SC-109-10	Mach. Screw 6-32 x 3 <sup>3</sup> / <sub>8</sub> Slotted Pan Hd. (SST).....	1
14	NS-009-07	Mach. Nut 6-32 Hex.....	1
15	00-078752-00012	Clamp – Cable 3 <sup>3</sup> / <sub>8</sub> P.....	1
16	SC-037-80	Cap Screw 10-24 x 1 <sup>1</sup> / <sub>2</sub> Hex Hd.....	8
17	00-418159-00001	Block – Cam Switch.....	1
18	00-411496-000F3	Microswitch.....	1
19	SC-112-90	Mach. Screw 4-40 x 1 Slotted Pan Hd.....	2
20	NS-009-02	Mach. Nut 4-40 Hex.....	2
21	00-418123-000G1	Plate – Motor.....	1
22	00-418156-00001	Gear – Motor (115 V., 60 Hz.).....	1
23	00-418517-00001	Shroud – Motor.....	1
24	00-418513-00001	Base – Motor Mounting.....	1
25	SD-032-07	Self-Tapping Screw 10-24 x 1 <sup>1</sup> / <sub>2</sub> Hex Washer Hd., Type TT.....	2
26	SC-037-80	Cap Screw 10-24 x 1 <sup>1</sup> / <sub>2</sub> Hex Hd.....	2
27	00-416535-00004	Switch – Relay SPDT 24 V. Coil (Electronic Ignition).....	1
28	SC-109-10	Mach. Screw 6-32 x 3 <sup>3</sup> / <sub>8</sub> Slotted Pan Hd. (SST).....	3
29	NS-009-07	Mach. Nut 6-32 Hex.....	3
30	SC-018-47	Mach. Screw 10-32 x 3 <sup>3</sup> / <sub>4</sub> Slotted Pan Hd.....	4
31	SD-036-03	Self-Tapping Screw 8-18 x 3 <sup>3</sup> / <sub>8</sub> Slotted Hex Washer Hd., Type AB.....	4
32	00-418510-00001	Wrap – Bottom.....	1
33	00-078752-00012	Clamp 3 <sup>3</sup> / <sub>8</sub> P.....	1
34	SC-109-10	Mach. Screw 6-32 x 3 <sup>3</sup> / <sub>8</sub> Slotted Pan Hd. (SST).....	1
35	NS-009-07	Mach. Nut Hex 6-32.....	1
36	00-418482-00001	Grommet.....	1
37	00-418475-000G1	Crank – Arm Assy. (Incls. Items 42 & 43).....	1
38	SC-055-02	Set Screw 1 <sup>1</sup> / <sub>4</sub> -20 x 1 <sup>1</sup> / <sub>4</sub> Hdls., Cup Pt. (SST).....	2
39	NS-047-73	Lock Nut 5 <sup>5</sup> / <sub>16</sub> -18 Hex.....	1
40	WS-004-33	Washer.....	1
41	SD-015-41	Self-Tapping Screw 8-32 x 1 <sup>1</sup> / <sub>2</sub> Phil. Pan Hd.....	2
42	00-418477-000G1	Coupler Assy.....	1
43	WS-004-33	Washer.....	1

**1HG SERIES FRYER REPLACEMENT PARTS**



PL-58087

**OIL RETURN AND ACCESSORIES (1HG85C)**

ILLUS.	PART NO.	NAME OF PART	AMT.
PL-58087			
1	00-419251-00001	Elbow – 1/2 NPTF Male Swivel .....	1
2	FP-035-96	Pipe 1/2 x 2 1/2 TBE .....	1
3	00-418786-00001	Valve – Check (Ball Cone).....	1
4	00-419211-00001	Adapter (Pipe to Flare) .....	1
5	00-418966-00002	Oil Return Line .....	1
6	SD-032-07	Self-Tapping Screw 10-24 x 1/2 Hex Washer Hd., Type TT .....	2
7	00-078752-00003	Clamp – Cable .....	2
8	00-521820	U-Bolt 1/4-20 .....	1
9	00-418359-00001	Bracket – Oil Return .....	1
10	00-418791-000G1	Quick Disconnect Assy.....	1
11	NS-046-52	Nut 1/4-20 Hex KEPS.....	2
12	SD-032-07	Self-Tapping Screw 10-24 x 1/2 Hex Washer Hd., Type TT .....	4
13	NS-044-09	Nut Assy. 10-24 Hex KEPS.....	4
	00-410682-00004	Hose – Flex 3/4 x 4 Ft. (Gas) (Accessory) .....	1
	00-410682-00005	Hose – Flex 3/4 x 5 Ft. (Gas) (Accessory) .....	1
	00-410682-00006	Disconnect – Quick (3/4) (Gas) (Accessory) .....	1
	00-410682-00009	Disconnect – Quick (1 1/4) (Gas) (Accessory) .....	1
	00-410682-00008	Hose – Flex 1 1/4 x 5 Ft. (Gas) (Accessory) .....	1
	00-410682-00007	Hose – Flex 1 1/4 x 4 Ft. (Gas) (Accessory).....	1
	00-418360-000G4	Vat Cover Assy. (Accessory).....	1
	00-416936-00002	Handle (Vat Cover Assy.) (Accessory) .....	1
	00-421334-000G1	Drain Assy. – Extension .....	1