



CATALOG OF REPLACEMENT PARTS



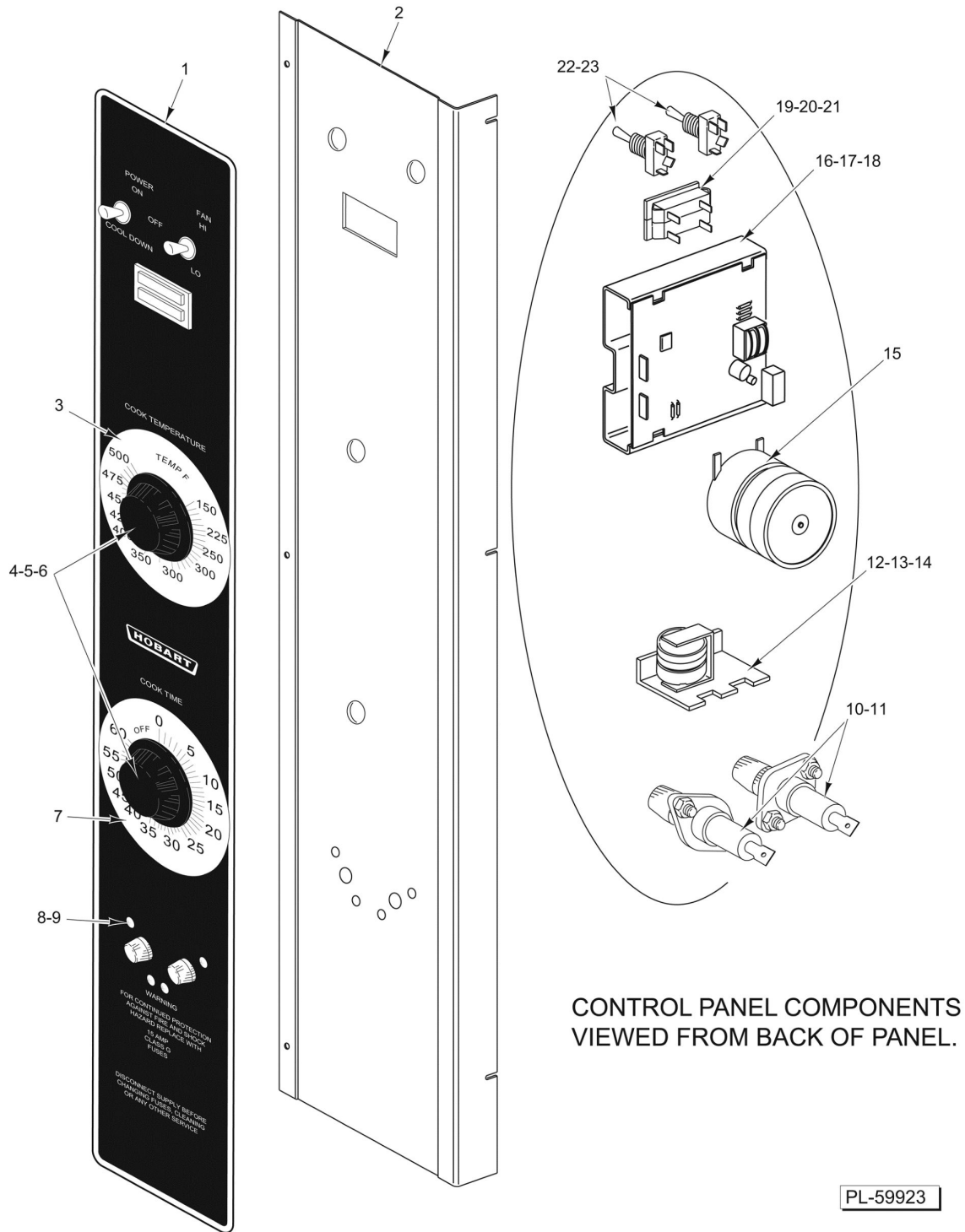
HALF SIZE ELECTRIC CONVECTION OVENS

ML-114574
ML-114576

HEC20
HEC20D

Table of Contents

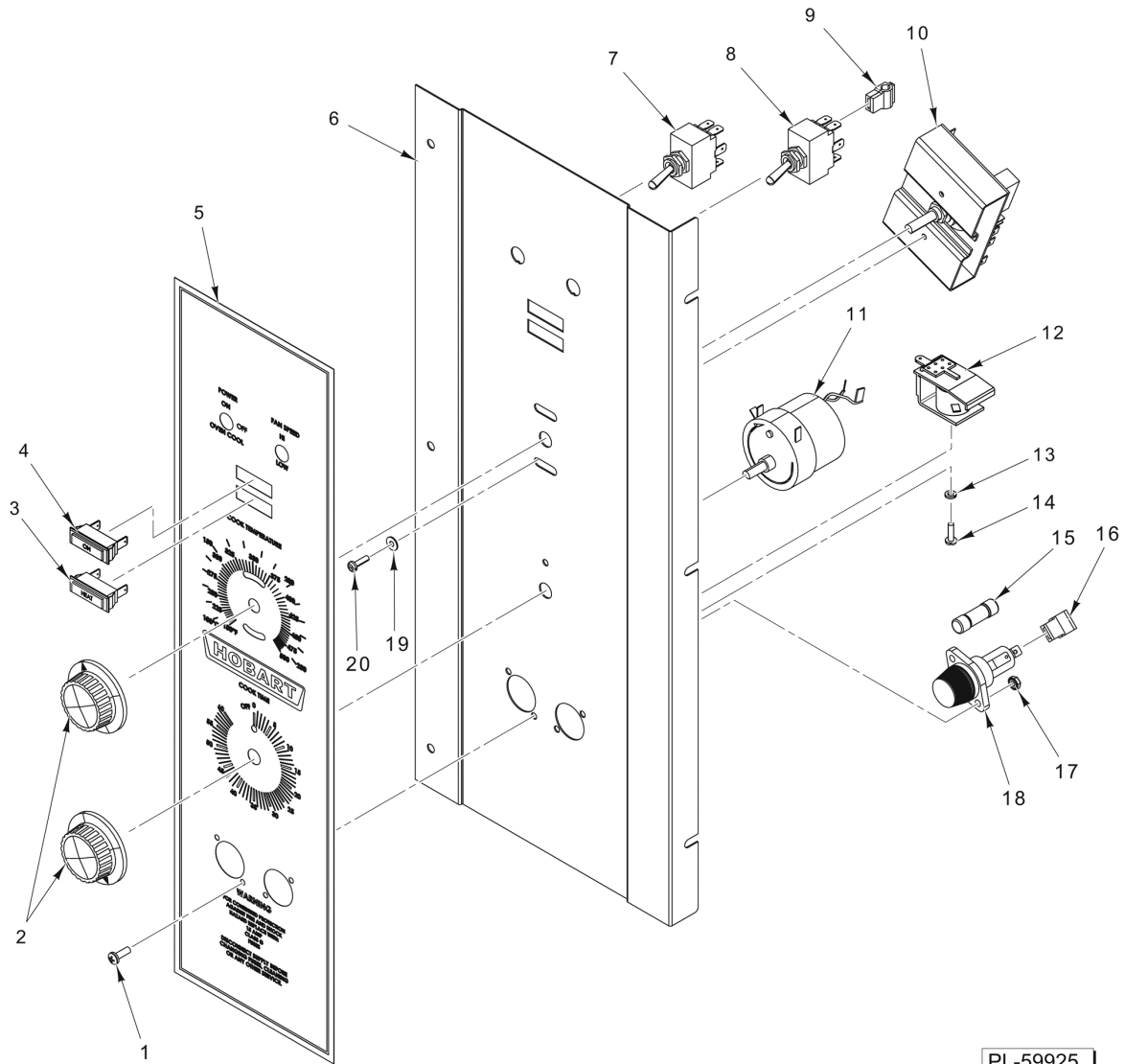
| | |
|----|--|
| 5 | CONTROL PANEL (HEC20) (PREVIOUS CONSTRUCTION) (PRIOR TO FEBRUARY 2003) |
| 7 | CONTROL PANEL (HEC20) (CURRENT CONSTRUCTION) |
| 9 | COMPUTERIZED CONTROLS (HEC20D) (PREVIOUS CONSTRUCTION) |
| 11 | COMPUTERIZED CONTROLS (HEC20D) (CURRENT CONSTRUCTION) |
| 13 | COMPONENT PANEL |
| 15 | DOOR ASSEMBLY |
| 17 | CABINET |
| 19 | ELECTRIC HEATERS AND BLOWER |



**CONTROL PANEL
(HEC20)
(PREVIOUS CONSTRUCTION)
(PRIOR TO FEBRUARY 2003)**

**CONTROL PANEL
(HEC20)
(PREVIOUS CONSTRUCTION)
(PRIOR TO FEBRUARY 2003)**

| ILLUS. PL-59923 | PART NO. | NAME OF PART | AMT. |
|--------------------|-----------------|---|------|
| 1 | 00-360878-00001 | Overlay - Control Panel..... | 1 |
| 2 | 00-422562-000G1 | Panel - Control..... | 1 |
| 3 | 00-358539-00001 | Plate - Temperature Dial (Fahrenheit)..... | 1 |
| 4 | 00-411242-00001 | Knob..... | 2 |
| 5 | SC-114-83 | Mach. Screw 6-32 x 1/4 Slotted Pan Hd. (SST)..... | 2 |
| 6 | WS-028-20 | Washer (SST)..... | 2 |
| 7 | 00-358538-00001 | Plate - Dial Timer..... | 1 |
| 8 | SC-114-27 | Mach. Screw 8-32 x 1/2 Phil. Pan Hd..... | 4 |
| 9 | NS-046-51 | Nut Assy. 8-32 Hex..... | 4 |
| 10 | FE-019-40 | Fuse (15 Amp., 300 V.)..... | 2 |
| 11 | FE-023-55 | Holder - Fuse (15 Amp., 300 V.)..... | 2 |
| 12 | 00-411499-00003 | Buzzer (230 V.)..... | 1 |
| 13 | SD-034-49 | Self-Tapping Screw 8-32 x 1/2 Hex Washer Hd., Type T..... | 1 |
| 14 | WL-014-10 | Lockwasher 1/4 External Shakeproof..... | 1 |
| 15 | 00-411690-00002 | Timer (200-240 V.) (60 Hz.) (1-Hr.)..... | 1 |
| 16 | 00-353613-00002 | Controller - Temperature (500 Deg.)..... | 1 |
| 17 | SC-114-83 | Mach. Screw 6-32 x 1/4 Slotted Pan Hd. (SST)..... | 2 |
| 18 | WS-028-20 | Washer (SST)..... | 2 |
| 19 | 00-354575-00007 | Light - Indicator (Amber)..... | 1 |
| 20 | 00-354575-00009 | Light - Indicator (Clear)..... | 1 |
| 21 | 00-913102-00161 | Light - Indicator (Double) (Incls. Items 19 & 20)..... | 1 |
| 22 | 00-340324-00008 | Switch (On/Off/Cooldown) (4 P.D.T.)..... | 1 |
| 23 | 00-340324-00009 | Switch (D.P.D.T.)..... | 1 |
| | 00-353589-00001 | Probe Temperature (SST)..... | 1 |

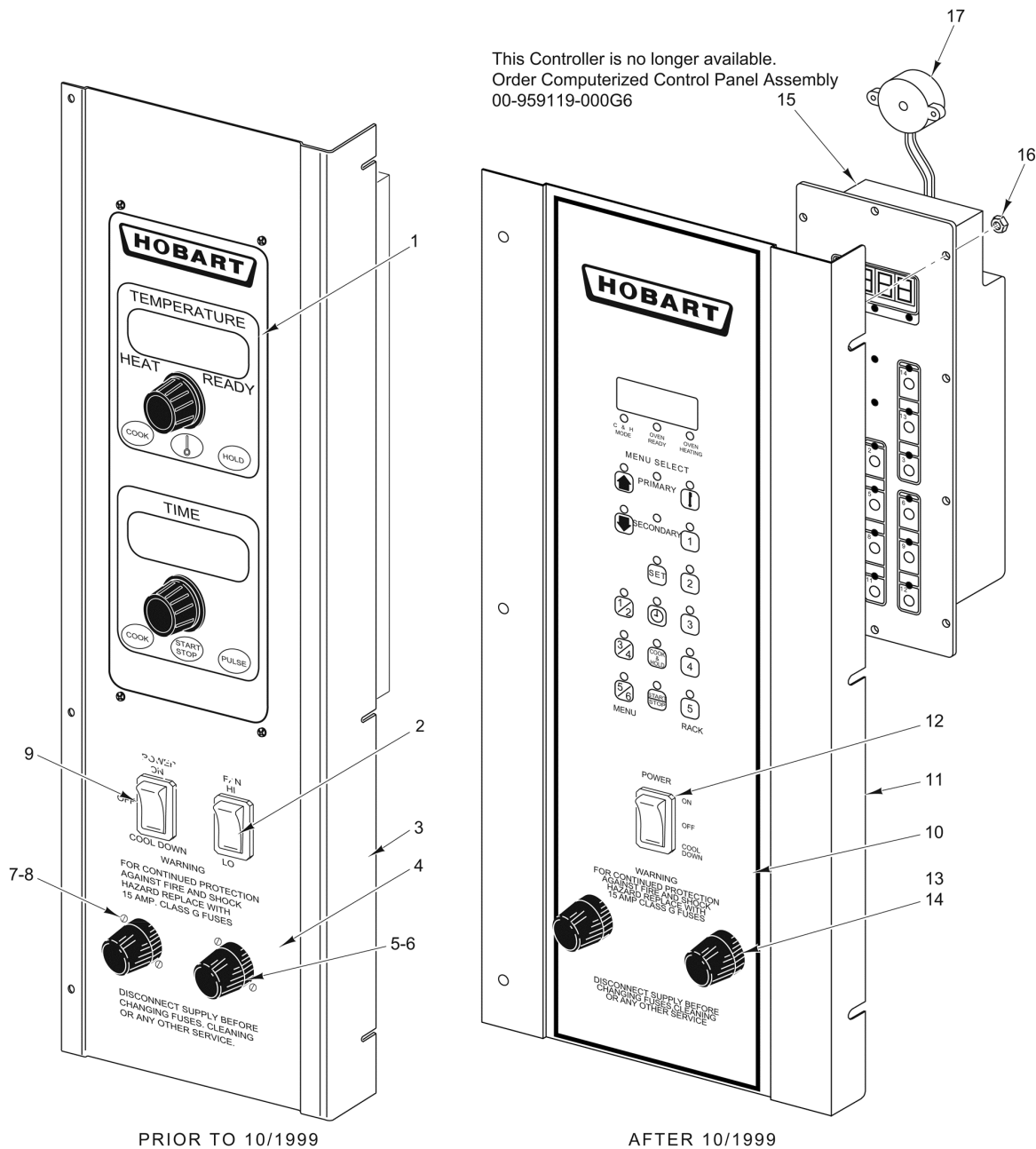


PL-59925

**CONTROL PANEL
(HEC20)
(CURRENT CONSTRUCTION)**

**CONTROL PANEL
(HEC20)
(CURRENT CONSTRUCTION)**

| ILLUS. PL-59925 | PART NO. | NAME OF PART | AMT. |
|--------------------|-----------------|---|------|
| 1 | SD-024-40 | Self-Tapping Screw 6-32 x 5/8 Phil. Pan Hd., Type TT..... | 4 |
| 2 | 00-411242-00001 | Knob..... | 2 |
| 3 | 00-354575-00009 | Light - Indicator (Clear)..... | 1 |
| 4 | 00-354575-00007 | Light - Indicator (Amber)..... | 1 |
| 5 | 00-428123-00001 | Overlay - Panel..... | 1 |
| 6 | 00-428131-000G1 | Panel - Control..... | 1 |
| 7 | 00-340324-00008 | Switch (On/Off/Cooldown) (4 P.D.T.)..... | 1 |
| 8 | 00-340324-00009 | Switch (D.P.D.T.)..... | 1 |
| 9 | 00-412575-00007 | Insulator - Terminal..... | 2 |
| 10 | 00-353613-00002 | Controller - Temperature (500 Deg.)..... | 1 |
| 11 | 00-411690-00002 | Timer (200-240 V.) (60 Hz.) (1-Hr.)..... | 1 |
| 12 | 00-411499-00003 | Buzzer (230 V.)..... | 1 |
| 13 | WL-003-12 | Lockwasher #8 Helical..... | 1 |
| 14 | SC-114-83 | Mach. Screw 6-32 x 1/4 Slotted Pan Hd. (SST)..... | 1 |
| 15 | FE-019-40 | Fuse (15 Amp., 300 V.)..... | 2 |
| 16 | 00-412575-00007 | Insulator - Terminal..... | 2 |
| 17 | NS-046-89 | Nut Assy. 6-32 Hex..... | 4 |
| 18 | FE-023-55 | Holder - Fuse (15 Amp., 300 V.)..... | 2 |
| 19 | WS-024-20 | Washer..... | 2 |
| 20 | SC-114-83 | Mach. Screw 6-32 x 1/4 Slotted Pan Hd. (SST)..... | 2 |



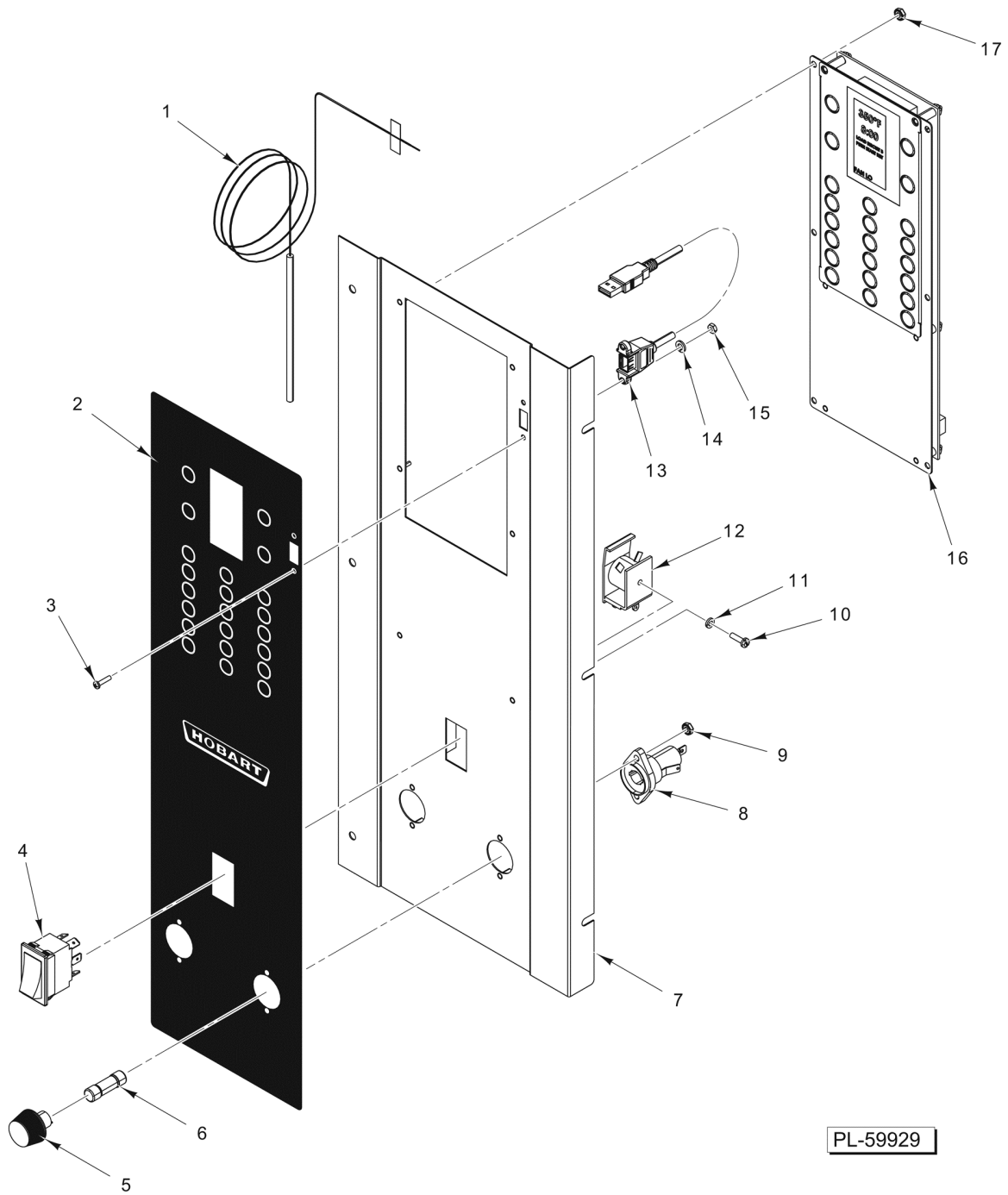
PL-59927

**COMPUTERIZED CONTROLS
(HEC20D)
(PREVIOUS CONSTRUCTION)**

**COMPUTERIZED CONTROLS
(HEC20D)
(PREVIOUS CONSTRUCTION)**

| ILLUS. | PART NO. | NAME OF PART | AMT. |
|----------|-----------------|---|------|
| PL-59927 | | | |
| 1 | 00-355903-00005 | Controller (With Cook, Hold , & Pulse)..... | 1 |
| 2 | 00-358628-00002 | Switch - Rocker (2-Position)..... | 1 |
| 3 | 00-422665-000G1 | Panel - Control..... | 1 |
| 4 | 00-422667-00001 | Overlay..... | 1 |
| 5 | FE-023-55 | Holder - Fuse (15 Amp., 300 V.)..... | 2 |
| 6 | FE-019-40 | Fuse (15 Amp., 300 V.)..... | 2 |
| 7 | NS-046-51 | Nut Assy. 8-32 Hex..... | 4 |
| 8 | SC-114-27 | Mach. Screw 8-32 x 1/2 Phil. Pan Hd..... | 4 |
| 9 | 00-358628-00001 | Switch - Rocker (3 Position)..... | 1 |
| 10 | 00-426699-00001 | Overlay (HEC20D)..... | 1 |
| 11 | 00-426694-000G1 | Panel - Control..... | 1 |
| 12 | 00-358628-00001 | Switch - Rocker (3 Position)..... | 1 |
| 13 | FE-023-55 | Holder - Fuse (15 Amp., 300 V.)..... | 2 |
| 14 | FE-019-40 | Fuse (15 Amp., 300 V.)..... | 2 |
| *15 | | Controller..... | 1 |
| 16 | NS-044-05 | Nut Assy. 6-32 Hex Keps..... | 6 |
| 17 | 00-423918-00001 | Electronic Beeper..... | 1 |
| | 00-920883-00002 | Probe - Thermocouple (With 40 In. Leads)..... | 1 |
| | 00-342132-00001 | Guard - Thermo..... | 1 |
| | 00-959119-000G6 | Panel - Control Assy. (Complete)..... | 1 |

* (No Longer Available, Order 00-959119-000G6)

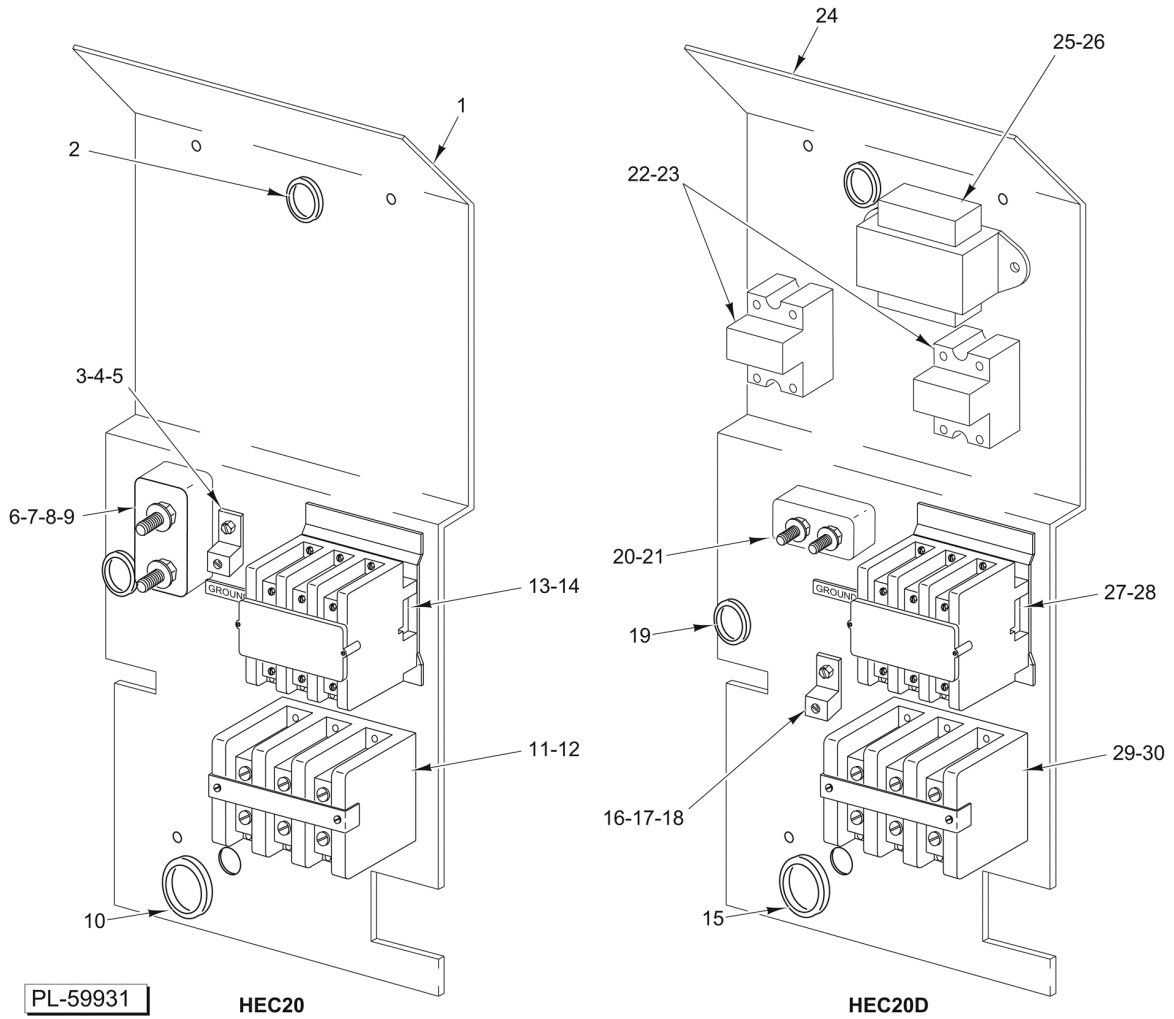


PL-59929

**COMPUTERIZED CONTROLS
(HEC20D)
(CURRENT CONSTRUCTION)**

**COMPUTERIZED CONTROLS
(HEC20D)
(CURRENT CONSTRUCTION)**

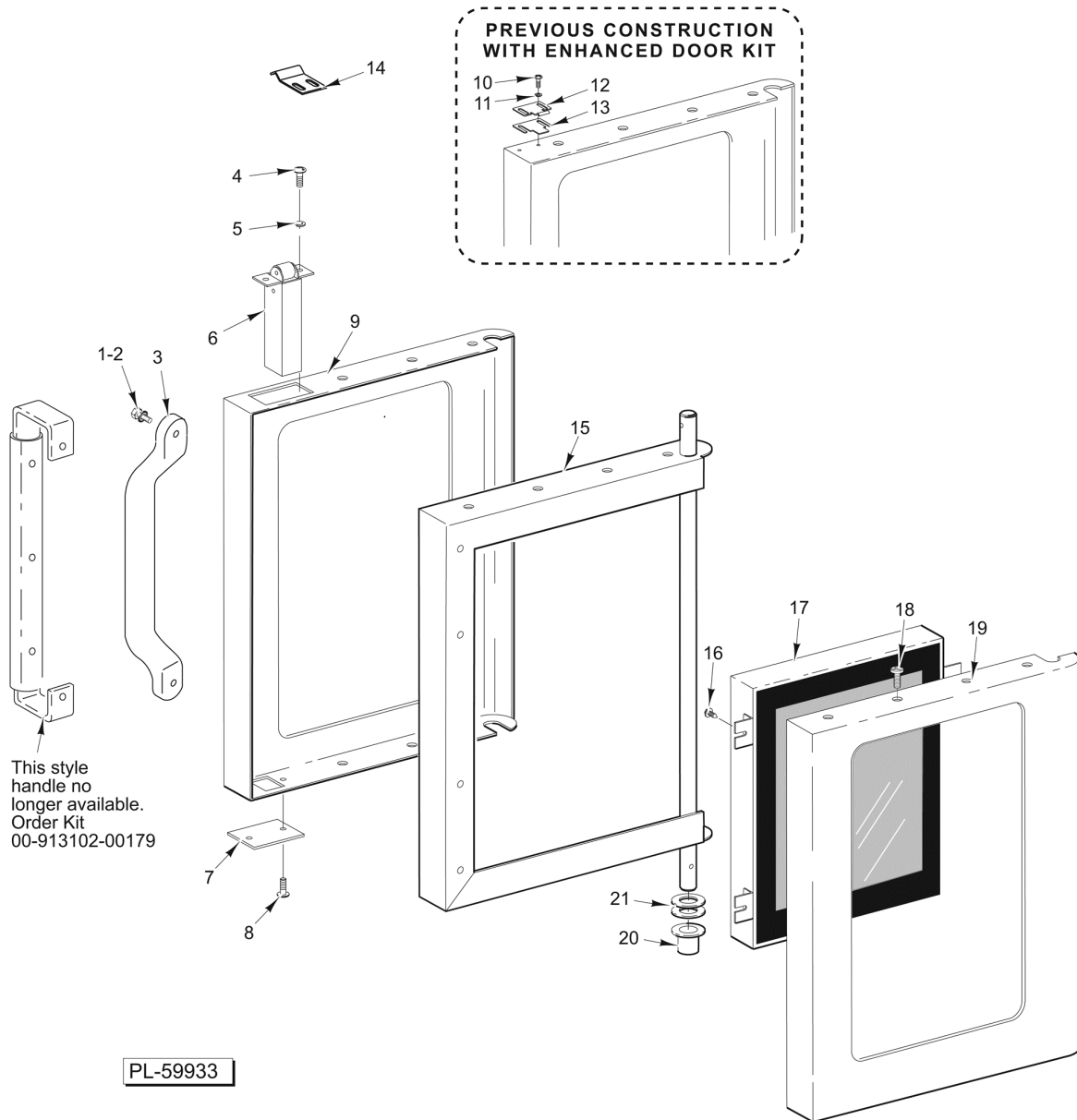
| ILLUS. PL-59929 | PART NO. | NAME OF PART | AMT. |
|--------------------|-----------------|---|------|
| 1 | 00-920883-00003 | Probe - Temperature..... | 1 |
| 2 | 00-959126-00004 | Overlay (Hobart)..... | 1 |
| 3 | | Mach. Screw 4-40 x 1/2 Phil. Pan Hd..... | 2 |
| 4 | 00-358628-00001 | Switch - Rocker (3 Position)..... | 1 |
| 5 | FE-023-55 | Holder - Fuse (15 Amp., 300 V.) (Incls. Item 8)..... | 2 |
| 6 | FE-019-40 | Fuse (15 Amp., 300 V.)..... | 2 |
| 7 | 00-959119-000G2 | Panel - Control Assy. (Complete) (240 V.)..... | 1 |
| 8 | FE-023-55 | Holder - Fuse (15 Amp., 300 V.) (Incls. Item 5)..... | 2 |
| 9 | NS-046-89 | Nut Assy. 6-32 Hex..... | 4 |
| 10 | SC-114-83 | Mach. Screw 6-32 x 1/4 Slotted Pan Hd. (SST)..... | 1 |
| 11 | WL-003-12 | Lockwasher #8 Helical..... | 1 |
| 12 | 00-411499-00003 | Buzzer (230 V.)..... | 1 |
| 13 | 00-959000-000G1 | Cable Assy. (USB) (1 Ft.) (Incls. Items 3, 14, & 15)..... | 1 |
| 14 | | Lockwasher..... | 2 |
| 15 | | Nut 4-40 Hex..... | 2 |
| 16 | 00-959077-00001 | Controller - Cooking (NCC)..... | 1 |
| 17 | NS-046-89 | Nut Assy. 6-32 Hex..... | 6 |



COMPONENT PANEL

COMPONENT PANEL

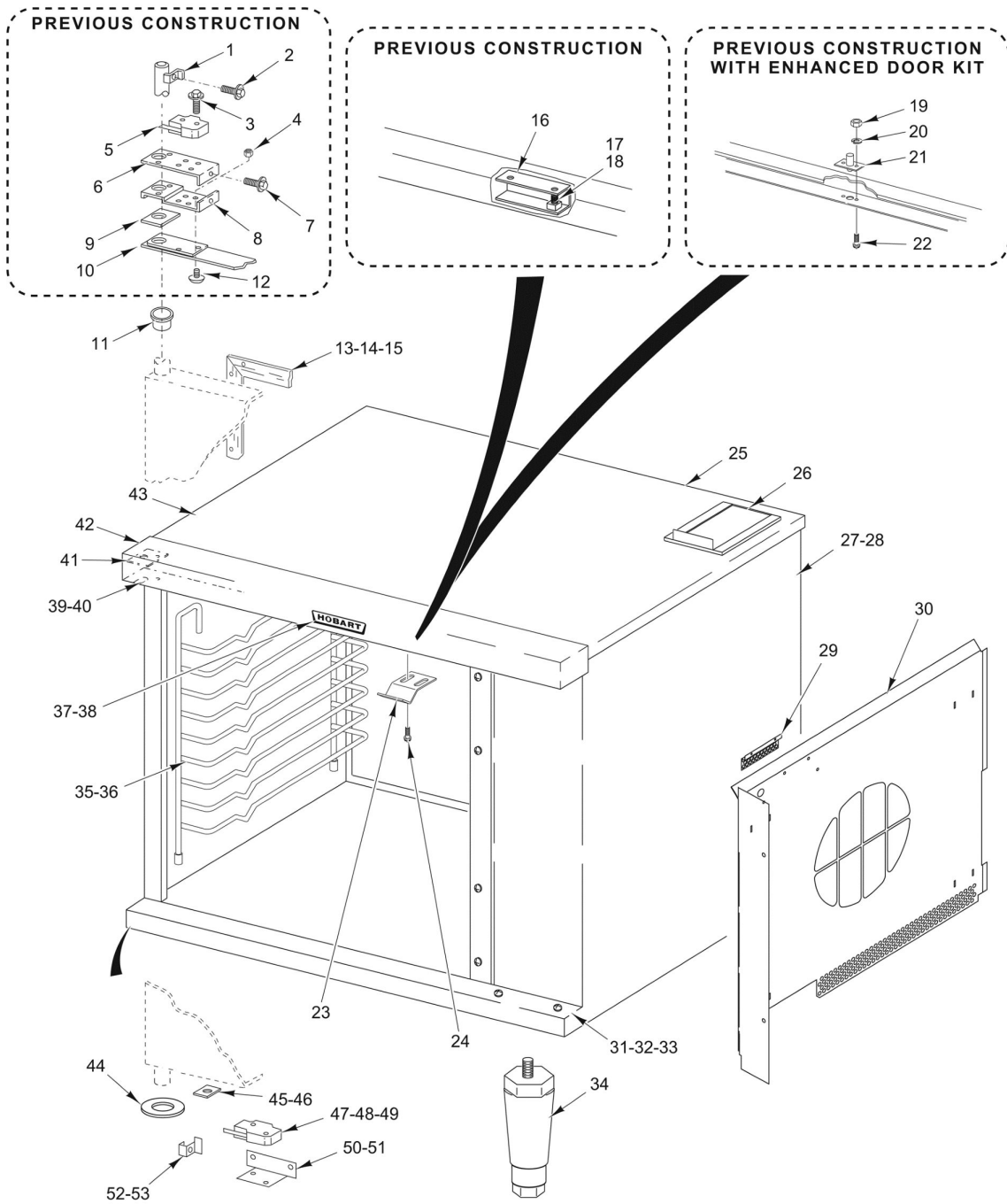
| ILLUS. | PART NO. | NAME OF PART | AMT. |
|----------|-----------------|---|------|
| PL-59931 | | | |
| 1 | 00-422712-00001 | Panel - Component..... | 1 |
| 2 | FE-016-32 | Bushing - Snap (Electrical)..... | 2 |
| 3 | 00-417856-00001 | Lug - Grounding (With Set Screw)..... | 1 |
| 4 | SD-032-07 | Self-Tapping Screw 10-24 x 1/2 Hex Washer Hd., Type TT..... | 2 |
| 5 | WL-004-40 | Lockwasher #10 Helical..... | 1 |
| 6 | 00-417934-000G1 | Block Assy. - Porcelain..... | 1 |
| 7 | SD-034-52 | Self-Tapping Screw 8-32 x 1 Hex Washer Hd., Type T..... | 2 |
| 8 | WS-023-20 | Washer..... | 2 |
| 9 | NS-044-09 | Nut Assy. 10-24 Hex Keps..... | 1 |
| 10 | FE-023-53 | Bushing - Snap..... | 1 |
| 11 | 00-410472-00008 | Block - Terminal (3-Pole)..... | 1 |
| 12 | SD-032-07 | Self-Tapping Screw 10-24 x 1/2 Hex Washer Hd., Type TT..... | 2 |
| 13 | 00-411497-000C5 | Contactactor (3-Pole)..... | 1 |
| 14 | SD-032-07 | Self-Tapping Screw 10-24 x 1/2 Hex Washer Hd., Type TT..... | 2 |
| 15 | FE-023-53 | Bushing - Snap..... | 1 |
| 16 | 00-417856-00001 | Lug - Grounding (With Set Screw)..... | 1 |
| 17 | SD-032-07 | Self-Tapping Screw 10-24 x 1/2 Hex Washer Hd., Type TT..... | 2 |
| 18 | WL-004-40 | Lockwasher #10 Helical..... | 1 |
| 19 | FE-016-32 | Bushing - Snap (Electrical)..... | 2 |
| 20 | 00-417934-000G1 | Block Assy. - Porcelain..... | 1 |
| 21 | SD-034-52 | Self-Tapping Screw 8-32 x 1 Hex Washer Hd., Type T..... | 2 |
| 22 | 00-821875-00002 | Relay - Solid State (50 Amp.)..... | 2 |
| 23 | SD-034-49 | Self-Tapping Screw 8-32 x 1/2 Hex Washer Hd., Type T..... | 4 |
| 24 | 00-422712-00001 | Panel - Component..... | 1 |
| 25 | 00-421758-000G4 | Transformer Assy..... | 2 |
| 26 | SD-032-07 | Self-Tapping Screw 10-24 x 1/2 Hex Washer Hd., Type TT..... | 2 |
| 27 | 00-411497-000C5 | Contactactor (3-Pole)..... | 1 |
| 28 | SD-034-49 | Self-Tapping Screw 8-32 x 1/2 Hex Washer Hd., Type T..... | 2 |
| 29 | 00-410472-00008 | Block - Terminal (3-Pole)..... | 1 |
| 30 | SD-032-07 | Self-Tapping Screw 10-24 x 1/2 Hex Washer Hd., Type TT..... | 2 |



DOOR ASSEMBLY

DOOR ASSEMBLY

| ILLUS. | PART NO. | NAME OF PART | AMT. |
|----------|-----------------|--|------|
| PL-59933 | | | |
| 1 | 00-959087-00001 | Screw 1/4-20 x 1-1/4 Black Hd..... | 2 |
| 2 | WL-013-14 | Lockwasher 1/4 Internal Shakeproof..... | 2 |
| 3 | 00-957108-00001 | Handle - Molded (Black)..... | 1 |
| 4 | SC-117-73 | Mach. Screw 10-32 x 5/8 Phil. Truss Hd..... | 2 |
| 5 | WL-019-35 | Lockwasher #10 Internal..... | 2 |
| 6 | 00-497586-00001 | Latch - Door Roller (Mounted to Door)..... | 1 |
| 7 | 00-499264-00001 | Plate - Latch Cutout..... | 1 |
| 8 | SD-034-22 | Self-Tapping Screw 10-16 X 5/8 Phil. Truss Hd., Type AB..... | 2 |
| 9 | 00-360887-00001 | Panel - Outer Door (With Window)..... | 1 |
| 10 | SC-115-51 | Mach. Screw 10-32 x 1/2 Phil. Truss Hd..... | 2 |
| 11 | WL-019-35 | Lockwasher #10 Internal..... | 2 |
| 12 | 00-423847-00001 | Strike - Door (Mounted to Door)..... | 2 |
| 13 | 00-423848-00001 | Shim - Door Strike..... | 1 |
| 14 | 00-499270-00001 | Strike - Door (Attaches to Upper "C" Channel)..... | 1 |
| 15 | 00-359703-000G1 | Door Frame Assy..... | 1 |
| 16 | SD-034-62 | Self-Tapping Screw 10-32 x 1/2 Hex Washer Hd., Type T..... | 4 |
| 17 | 00-358534-00001 | Window Assy..... | 1 |
| 18 | SD-034-22 | Self-Tapping Screw 10-16 X 5/8 Phil. Truss Hd., Type AB..... | 7 |
| 19 | 00-360889-000G1 | Panel - Inner Door (With Window)..... | 1 |
| 20 | 00-347080-00002 | Bearing - Door Shaft..... | 1 |
| 21 | 00-343143-00002 | Washer..... | 4 |
| | 00-423014-000G2 | Door Kit - Enhanced (Prior to 7/15/08) (Incls. Items 4, 5, 7, & 12)..... | 1 |
| | 00-499305-000G1 | Door Assy..... | 1 |
| | 00-913102-00179 | Kit - Handle (Incls. Items 1, 2, & 3)..... | 1 |

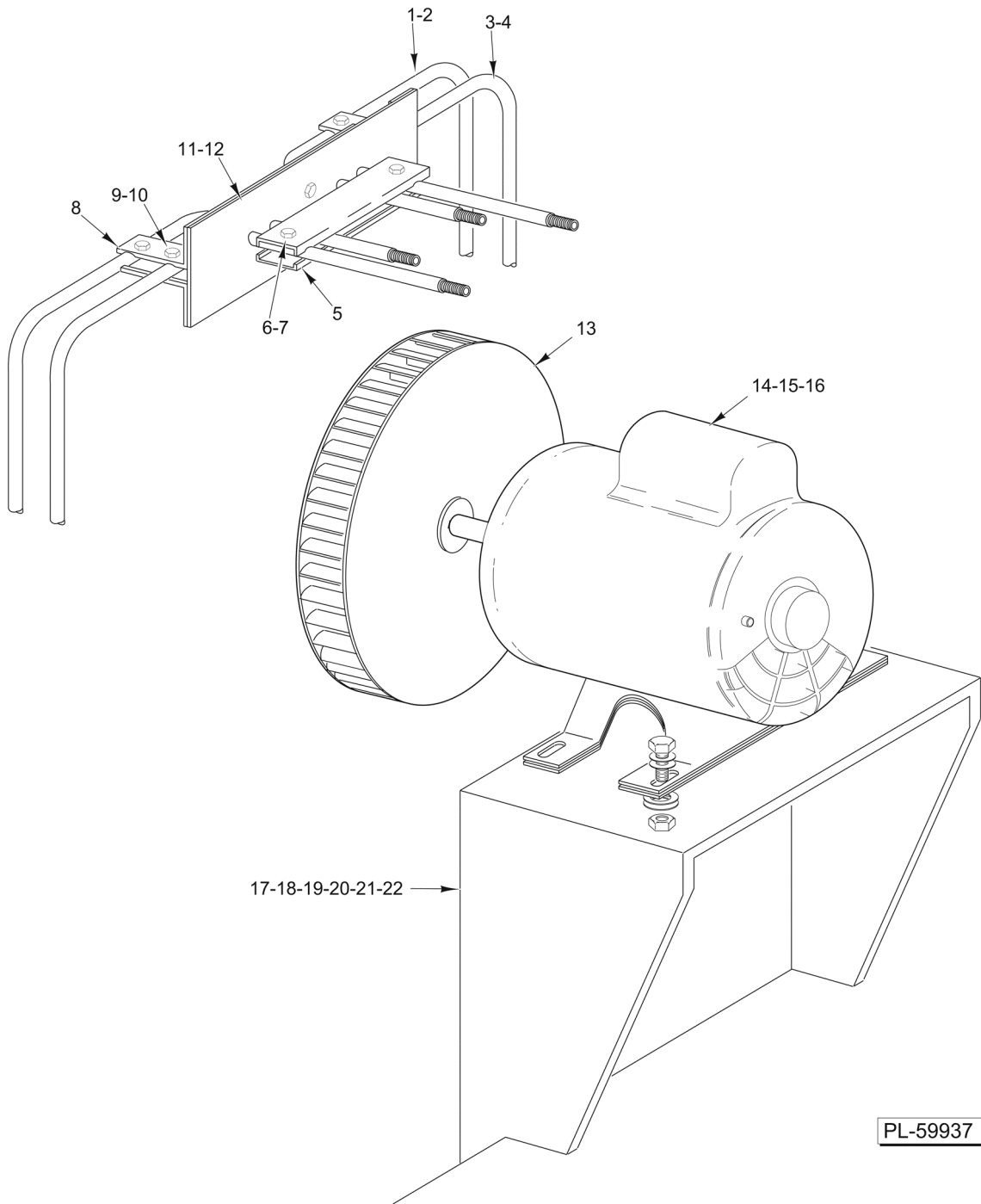


PL-59935

CABINET

CABINET

| ILLUS. | PART NO. | NAME OF PART | AMT. |
|----------|-----------------|--|------|
| PL-59935 | | | |
| 1 | 00-427855-00001 | Striker - Door Switch (Used on machines built prior to 12/2008)..... | 1 |
| 2 | SD-036-30 | Self-Tapping 8-32 x 1/4 Slotted Hex Washer Hd., Type T..... | 1 |
| 3 | SD-034-47 | Self-Tapping Screw 6-32 x 1 Hex Washer Hd., Type T..... | 2 |
| 4 | NS-046-52 | Nut Assy. 1/4-20 Hex..... | 2 |
| 5 | 00-353782-00001 | Switch - Door (Machines built prior to 8/2001)..... | 1 |
| 6 | 00-353780-00001 | Bracket - Switch (Machines built prior to 8/2001)..... | 1 |
| 7 | SD-036-30 | Self-Tapping 8-32 x 1/4 Slotted Hex Washer Hd., Type T..... | 1 |
| 8 | 00-353778-00001 | Support - Switch..... | 1 |
| 9 | 00-353482-00001 | Spacer..... | 1 |
| 10 | 00-353483-00001 | Plate - Upper Door Bearing..... | 1 |
| 11 | 00-347080-00002 | Bearing - Door Shaft..... | 1 |
| 12 | SC-022-40 | Mach. Screw 1/4-20 x 3/4 Phil. Flat Hd. (SST)..... | 2 |
| 13 | 00-423281-00001 | Seal - Door (LH or RH)..... | 2 |
| 14 | 00-423280-00001 | Seal - Door (Top & Bottom)..... | 2 |
| 15 | SD-034-05 | Self-Tapping Screw 6-20 x 3/8 Phil. Pan Hd., Type AB..... | 16 |
| 16 | 00-355344 | Channel - Latch (Used on machines built prior to 12/1997)..... | 1 |
| 17 | 00-417810-00003 | Spring - Compression (Used on machines built prior to 12/1997)..... | 1 |
| 18 | 00-411794-00001 | Catch - Door (Used on machines built prior to 12/1997)..... | 1 |
| 19 | NS-046-88 | Nut Assy. 10-32 Hex..... | 2 |
| 20 | WL-019-35 | Lockwasher #10 Internal..... | 2 |
| 21 | 00-347545-00001 | Catch Assy. - Door (Roller Ball Style)..... | 1 |
| 22 | SC-115-51 | Mach. Screw 10-32 x 1/2 Phil. Truss Hd..... | 2 |
| 23 | 00-497585-00001 | Plate - Strike..... | 1 |
| 24 | SD-034-22 | Self-Tapping Screw 10-16 X 5/8 Phil. Truss Hd., Type AB..... | 2 |
| 25 | 00-354476-00002 | Back (SST)..... | 1 |
| 26 | 00-354482-00001 | Vent Extension..... | 1 |
| 27 | 00-422715-00002 | Panel - Side (RH) (SST)..... | 1 |
| 28 | 00-957647-000G1 | Panel - Side (LH) (SST)..... | 1 |
| 29 | 00-499274-00001 | Cover - Probe..... | 1 |
| 30 | 00-360869-000G1 | Blower Baffle Weldment (Enamel)..... | 1 |
| 31 | 00-422714-00001 | Cover - Lower (Used on machines built prior to 12/2008)..... | 1 |
| 32 | 00-957632-00001 | Cover - Lower (Used on machines built after 12/2008)..... | 1 |
| 33 | 00-422592-00001 | Sill - Door..... | 1 |
| 34 | 00-348164-00001 | Leg - Adjustable Chrome Plated (4 In.)..... | 4 |
| 35 | 00-347498-00003 | Guide - Rack (LH) (Used on machines built prior to 10/26/2012)..... | 1 |
| | 00-959382-00001 | Guide - Rack (LH & RH) (Used on machines after prior to 10/26/2012)..... | 2 |
| 36 | 00-347498-00004 | Guide - Rack (RH) (Used on machines built prior to 10/26/2012)..... | 1 |
| 37 | | Nameplate (Hobart)..... | 1 |
| 38 | NS-047-79 | Pal Nut 3/16..... | 2 |
| 39 | 00-499269-00001 | Support - Upper Door (Current Construction)..... | 1 |
| 40 | 00-422590-00001 | Support - Door Upper Reversible (Previous Construction)..... | 1 |
| 41 | 00-422588-00001 | Plate - Cover..... | 1 |
| 42 | 00-347593-00001 | Cover - Top..... | 1 |
| 43 | 00-422595-00002 | Top (SST)..... | 1 |
| 44 | 00-343143-00002 | Washer..... | 1 |
| 45 | 00-353790-00001 | Stop..... | 1 |
| 46 | SD-008-27 | Self-Tapping Screw 10-16 x 1/2 Phil. Truss Hd., Type B..... | 1 |
| 47 | 00-411496-000F1 | Switch - Micro..... | 1 |
| 48 | SC-123-87 | Mach. Screw 6-32 x 7/8 Slotted Pan Hd..... | 1 |
| 49 | NS-046-89 | Nut Assy. 6-32 Hex..... | 1 |
| 50 | 00-499338-00001 | Bracket - Door Switch (Used on machines built after 12/2008)..... | 1 |
| 51 | 00-426854-00001 | Bracket - Switch Mounting (Used on machines built prior to 12/2008)..... | 1 |
| 52 | 00-499340-00001 | Bracket - Shaft (Micro Switch) (Used on machines built after 12/2008)..... | 1 |
| 53 | SD-034-52 | Self-Tapping Screw 8-32 x 1 Hex Washer Hd., Type T..... | 1 |
| | 00-423014-000G2 | Door Kit - Enhanced (Prior to 7/15/08) (Incls. Items 19 thru 22)..... | 1 |
| | 00-347497-00002 | Rack (Used on machines built prior to 10/26/2012)..... | AR |
| | 00-959381-00001 | Rack (Used on machines built after to 10/26/2012)..... | AR |
| | 00-353948-00002 | Caster Assy. (Swivel)..... | 2 |
| | 00-341655-00007 | Caster (Rigid) (5" Dia.)..... | 2 |
| | 00-342154-00002 | Plug - Hole..... | 1 |



ELECTRIC HEATERS AND BLOWER

ELECTRIC HEATERS AND BLOWER

| ILLUS. | PART NO. | NAME OF PART | AMT. |
|----------|-----------------|---|------|
| PL-59937 | | | |
| 1 | 00-351393-00002 | Heater Unit Assy. (Outer) (208 V.)..... | 1 |
| 2 | 00-351393-00004 | Heater Unit Assy. (Outer) (240 V.)..... | 1 |
| 3 | 00-351393-00001 | Heater Unit Assy. (Inner) (208 V.)..... | 1 |
| 4 | 00-351393-00003 | Heater Unit Assy. (Inner) (240 V.)..... | 1 |
| 5 | 00-342131-00001 | Clamp - Large..... | 2 |
| 6 | SC-114-02 | Mach. Screw 10-32 x 3/4 Slotted Hex Washer Hd..... | 2 |
| 7 | NS-046-88 | Nut Assy. 10-32 Hex..... | 2 |
| 8 | 00-342133-00001 | Clamp - Small..... | 6 |
| 9 | SC-114-02 | Mach. Screw 10-32 x 3/4 Slotted Hex Washer Hd..... | 6 |
| 10 | NS-046-88 | Nut Assy. 10-32 Hex..... | 6 |
| 11 | 00-347430-00001 | Plate Assy. - Seal..... | 1 |
| 12 | 00-342145-00001 | Plate..... | 1 |
| 13 | 00-354262-00001 | Blower..... | 1 |
| 14 | 00-358516-00002 | Motor 1/2 Hp. (2-Speed) (208-240 V., 50/60 Hz., 1 Ph.) (Previous Construction)..... | 1 |
| 15 | 00-428449-00002 | Motor (208-230 V., 60 Hz.)..... | 1 |
| 16 | FE-023-56 | Bushing - Electric Snap..... | 1 |
| 17 | 00-347786-00002 | Motor Mount Assy. (Previous Construction)..... | 1 |
| 18 | 00-422711-000G3 | Motor Mount Assy..... | 1 |
| 19 | SC-116-84 | Cap Screw 5/16-18 x 1-1/8 Hex Hd..... | 4 |
| 20 | WS-029-46 | Washer..... | 4 |
| 21 | NS-046-86 | Nut Assy. 5/16-18 "KEPS" Hex..... | 2 |
| 22 | 00-358723-00001 | Spacer - Steel..... | 2 |
| | 00-347563-00001 | Cover - Heater Unit..... | 1 |
| | 00-347494-00001 | Heater Assy. (208 V.) (Incls. Items 1, 3, & 5 thru 12)..... | 1 |
| | 00-347494-00002 | Heater Assy. (240 V.) (Incls. Items 2 & 4 thru 12)..... | 1 |
| | 00-402558-00004 | Clip - Tubing..... | 2 |

