



# CATALOG OF REPLACEMENT PARTS

## HFD/HFC SERIES FRYERS

### DRAWER FILTER SYSTEM

HFD50F	ML-135570
HFD85F	ML-135574
HFC50F	ML-135571
HFC85F	ML-135575

### WITHOUT DRAWER FILTER SYSTEM

HFD50	ML-135551
HFD85	ML-135553
HFC50	ML-135555
HFC85	ML-135557

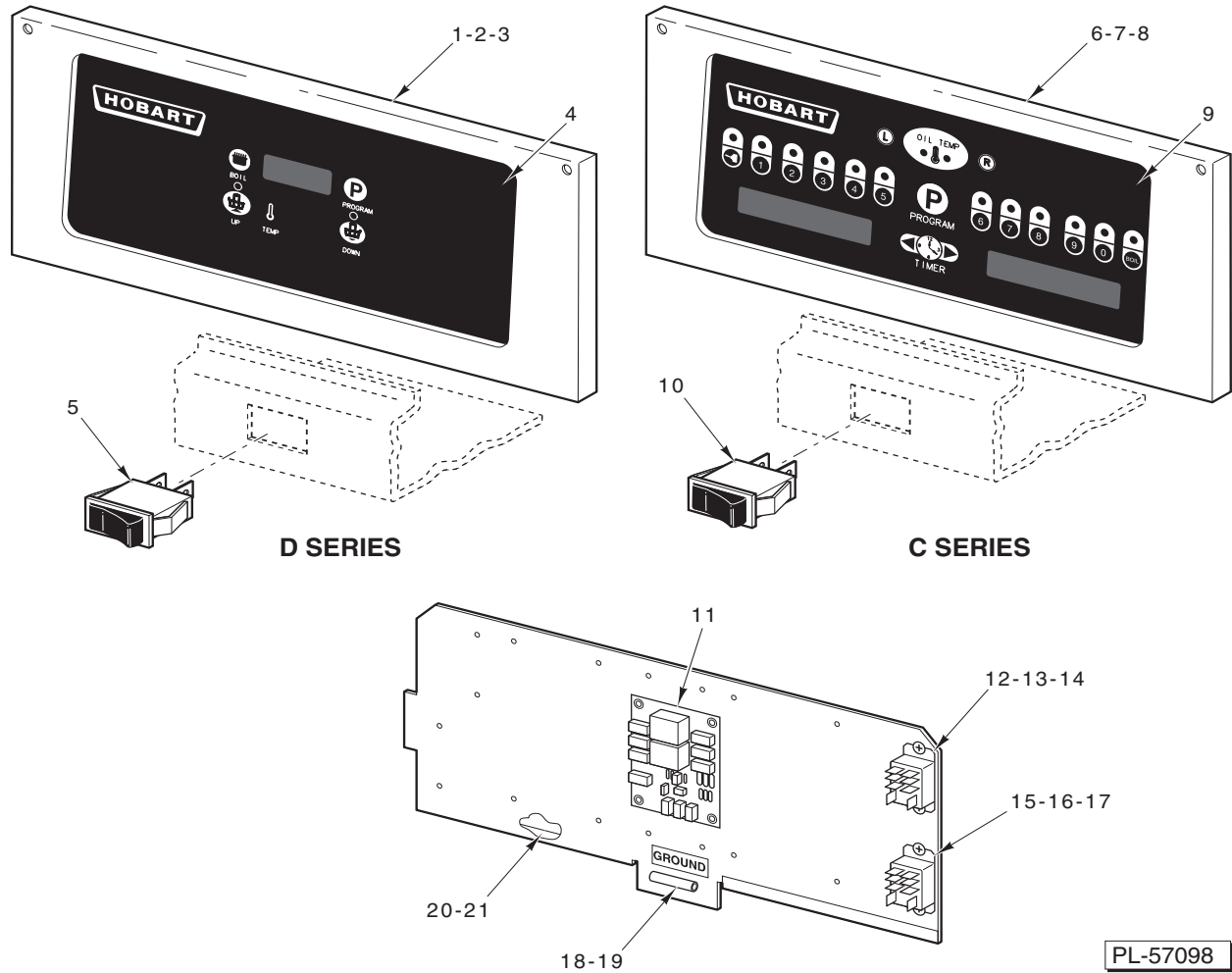
### FRYMATE

HF015	ML-135558
HF021	ML-135559



### Table of Contents

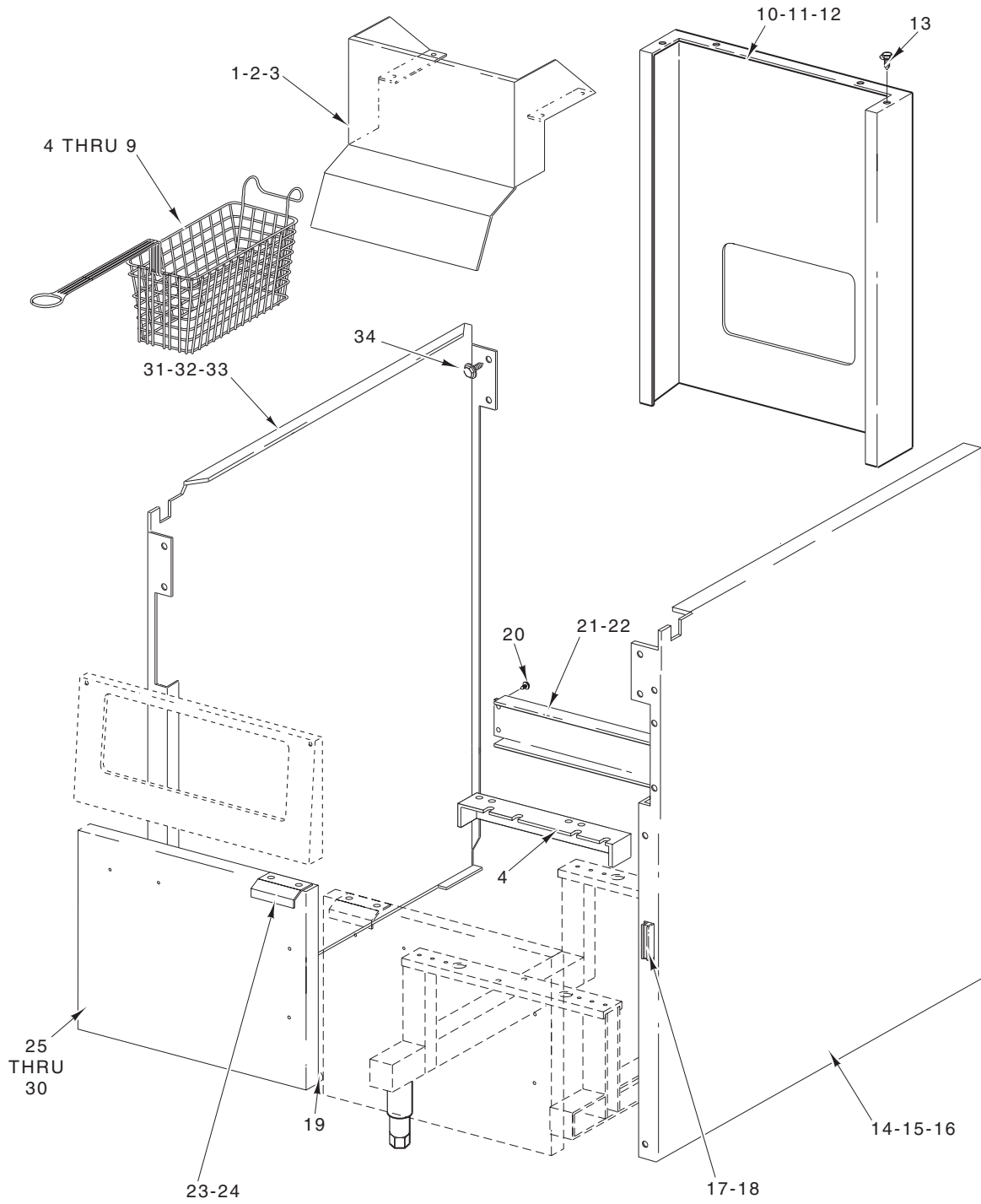
5	Control Panel (Tridelta)
7	Body Unit
9	Filter Assembly
11	Tank Assembly
13	Heating Element Assembly
15	Basketlift Components
17	Power Supply Box
19	Oil Return
21	Dump Station Assembly
22	Accessories



**CONTROL PANEL (TRIDELTA)**

## CONTROL PANEL (TRIDELTA)

ILLUS. PL-57098	PART NO.	NAME OF PART	AMT.
1	00-913012-00002	Control Assy. – Solid State (Incls. Item 4) (HFD50/50F & HFD85/85F) .....	1
2	00-426815-000G1	Plate Assy. – Mounting (HFD50/50F) .....	1
3	00-426815-000G2	Plate Assy. – Mounting (HFD85/85F) .....	1
4	00-427820-00002	Overlay – Control Panel (HFD50/50F & HFD85/85F) .....	1
5	00-427755-000G1	Rocker Switch Assy. ....	1
6	00-913012-00001	Computer Cooking Assy. (Incls. Item 9) (HFC50/50F & HFC85/85F) .....	1
7	00-426815-000G1	Plate Assy. – Mounting (HFC50/50F) .....	1
8	00-426815-000G2	Plate Assy. – Mounting (HFC85/85F) .....	1
9	00-426732-00002	Overlay – Control Panel (HFC50/50F & HFC85/85F) .....	1
10	00-427755-000G1	Rocker Switch Assy. ....	1
11	00-427759-00001	Board – Control Interface .....	1
12	00-416535-00004	Relay (24 V. Coil) .....	1
13	SD-032-07	Self-Tapping Screw 10-24 x 1/2 Hex Washer Hd., Type TT .....	2
14	SC-112-90	Mach. Screw 4-40 x 1 Slotted Pan Hd. ....	2
15	00-416535-00007	Relay (240 V. Coil) .....	1
16	SD-032-07	Self-Tapping Screw 10-24 x 1/2 Hex Washer Hd., Type TT .....	2
17	SC-112-90	Mach. Screw 4-40 x 1 Slotted Pan Hd. ....	2
18	00-419317	Terminal – Ground .....	1
19	SD-033-86	Self-Tapping Screw 6-32 x 3/4 Phil. Pan Hd., Type TT .....	1
20	00-427740-00001	Plate – Control (HFD50/50F & HFC50/50F) .....	1
21	00-427740-00002	Plate – Control (HFD85/85F & HFC85/85F) .....	1

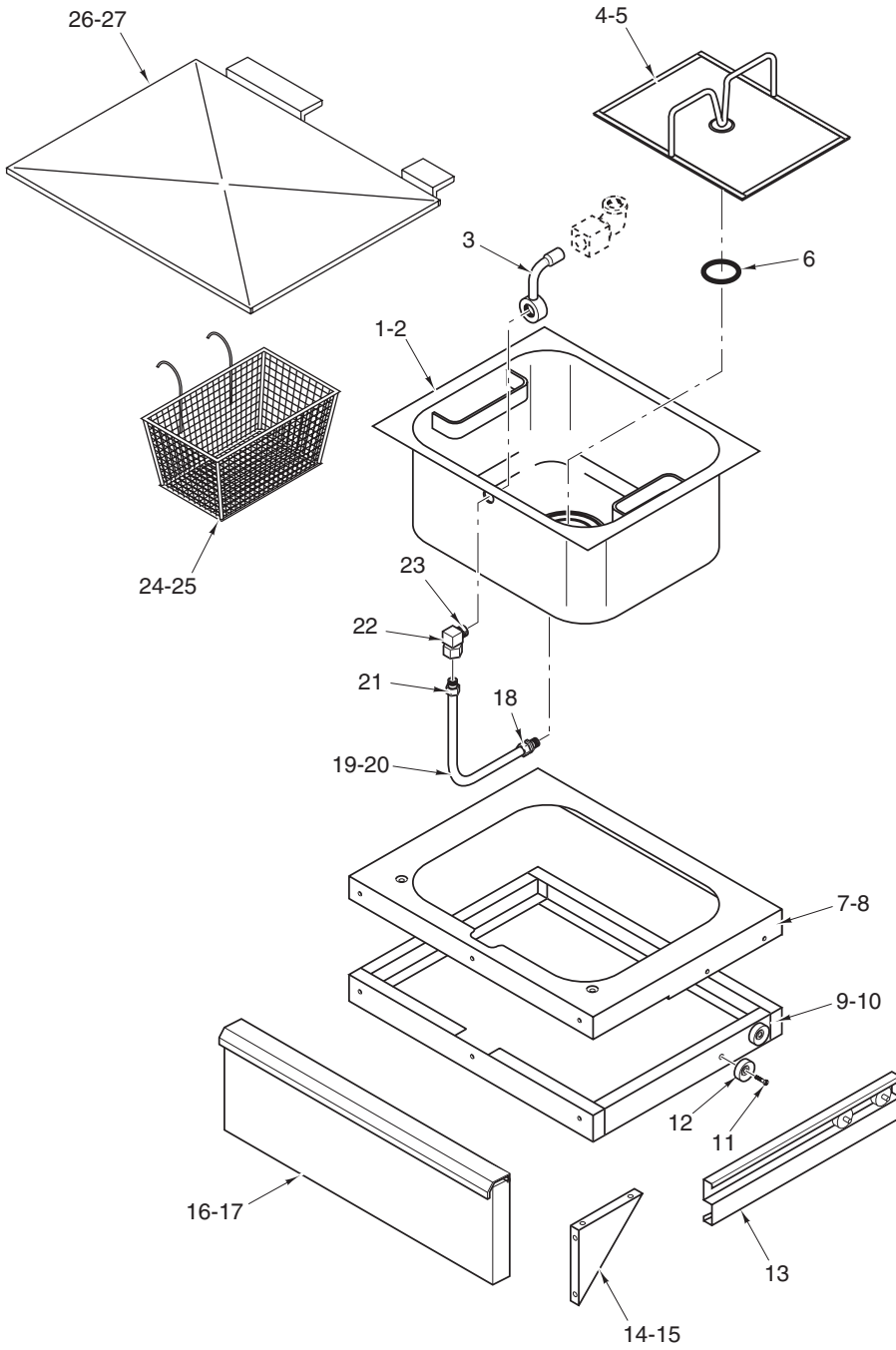


PL-57097

**BODY UNIT**

**BODY UNIT**

ILLUS.	PART NO.	NAME OF PART	AMT.
PL-57097			
1	00-421831-00001	Hanger – Twin Basket (HFD85/85F & HFC85/85F) .....	1
2	00-421912-000G1	Hanger – Single Basket (HFD85/85F & HFC85/85F) .....	1
3	00-421911-000G1	Hanger – Single Basket (HFD50/50F & HFC50/50F) .....	1
4	00-410737-00009	Basket – Twin (Black Handle) (HFD50/50F & HFC50/50F) .....	AR
5	00-422868-00002	Basket – Twin (HFD85/85F & HFC85/85F) .....	AR
6	00-422870-00002	Basket – Triple (HFD85/85F & HFC85/85F) .....	AR
7	00-422914-00002	Basket – Triple (Black Handle) (HFD50/50F & HFC50/50F) .....	AR
8	00-422869-00001	Basket – Single (HFD85/85F & HFC85/85F) .....	AR
9	00-411378-00002	Basket – Single (HFD50/50F & HFC50/50F) .....	AR
10	00-422020-000G2	Flue Wrap (SST) (HFD50/50F & HFC50/50F) .....	1
11	00-422020-000G4	Flue Wrap (SST) (HFD85/85F & HFC85/85F) .....	1
12	00-422021-00002	Flue Wrap (SST) (HFD50/50F & HFC50/50F) .....	1
13	SD-036-96	Self-Tapping Screw 8-18 x 3/4 Hex Hd., Type AB .....	2
14	00-420596-00004	Body – Side (SST) (RH) .....	1
15	00-419777-00004	Body – Side (SST) (RH) (HFD50/85 & HFC50/85) .....	1
16	00-426763-00004	Body – Side (SST) (RH) (HFD50F/85F & HFC50F/85F) .....	1
17	00-426573-00001	Magnet – Door .....	1
18	SD-036-80	Self-Tapping Screw 8-32 x 3/8 Hex Washer Hd., Type TT .....	2
19	00-420769-00001	Bumper – Rubber .....	1
20	SD-032-07	Self-Tapping Screw 10-24 x 1/2 Hex Washer Hd., Type TT .....	10
21	00-417014-00001	Bracket – Rear Support (HFD50/50F & HFC50/50F) .....	1
22	00-418320-00001	Bracket – Rear Support (HFD85/85F & HFC85/85F) .....	1
23	00-419653	Handle .....	1
24	RS-033-02	Pop Rivet (0.187) .....	4
25	00-426582-000G1	Door Assy. (SST) (LH) (15 1/2 In.) (HFD50F & HFC50F) .....	1
26	00-426582-000G2	Door Assy. (SST) (RH) (15 1/2 In.) (HFD50F & HFC50F) .....	1
27	00-426582-000G5	Door Assy. (SS) (LH) (21 In.) (HFD85F & HFC85F) .....	1
28	00-426582-000G6	Door Assy. (SS) (RH) (21 In.) (HFD85F & HFC85F) .....	1
29	00-426562-000G2	Door Assy. (SST) (HFD50 & HFC50) .....	1
30	00-426562-000G6	Door Assy. (SST) (HFD85 & HFC85) .....	1
31	00-420596-00003	Body – Side (SST) (LH) .....	1
32	00-419777-00003	Body – Side (SST) (LH) (HFD50/85 & HFC50/85) .....	1
33	00-426763-00003	Body – Side (SST) (LH) (HFD50F/85F & HFC50F/85F) .....	1
34	SD-036-03	Self-Tapping Screw 8-18 x 3/8 Hex Washer Hd., Type AB .....	8



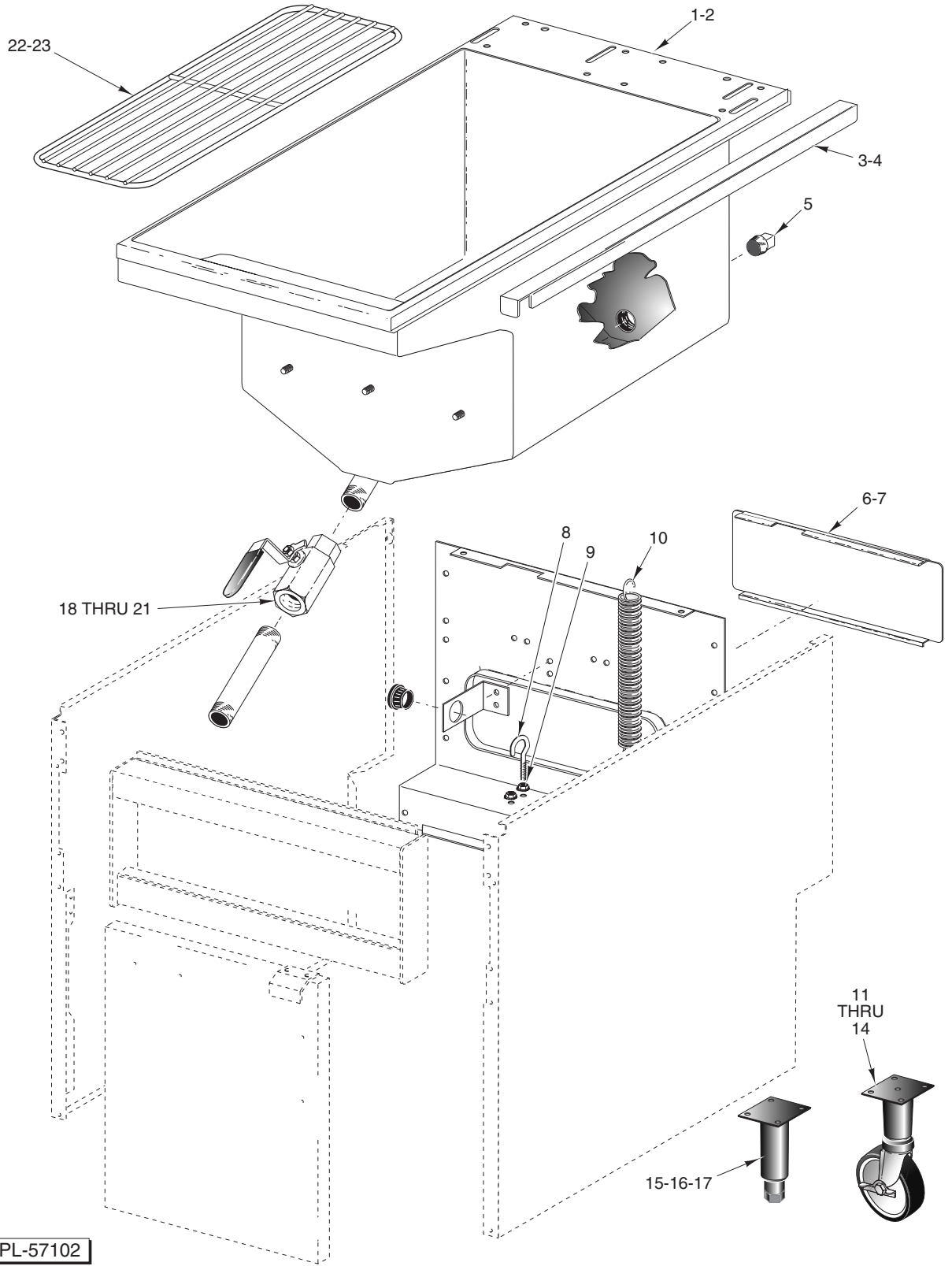
PL-57101

**FILTER ASSEMBLY**



## FILTER ASSEMBLY

ILLUS. PL-57101	PART NO.	NAME OF PART	AMT.
1	00-426570-000G1	Vessel (16 x 20 In.) (Incls. Items 3, 18, 19, 21, 22, & 23) (HFD50F & HFC50F) .....	1
2	00-428581-000G1	Vessel (16 x 28 In.) (Incls. Items 3, 18, & 20 thru 23) (HFD85F & HFC85F) .....	1
3	00-427672-000G1	Pipe – Oil Return Assy. ....	1
4	00-426711-000G1	Element – Filter Assy. (HFD50F & HFC50F) .....	1
5	00-426711-000G2	Element – Filter Assy. (HFD85F & HFC85F) .....	1
6	00-426630-00002	Seal – O-Ring .....	1
7	00-426515-00001	Counter Top – Filter (HFD50F & HFC50F) .....	1
8	00-426516-00002	Counter Top – Filter (HFD85F & HFC85F) .....	1
9	00-428077-000G1	Frame – Oil Tray (HFD50/50F & HFC50/50F) .....	1
10	00-428077-000G3	Frame – Oil Tray (HFD85/85F & HFC85/85F) .....	1
11	00-426600-00003	Screw 1/4-20 .....	2
12	00-426600-00002	Bearing – Roller .....	2
13	00-426600-000G1	Roller Guide Assy. ....	1
14	00-426595-00001	Gusset .....	2
15	SD-032-07	Self-Tapping Screw 10-24 x 1/2 Hex Washer Hd., Type TT .....	AR
16	00-426587-000G2	Door – Drawer Assy. (Incls. Handle) (HFD85F & HFC85F) .....	1
17	00-426587-000G1	Door – Drawer Assy. (Incls. Handle) (HFD50F & HFC50F) .....	1
18	00-426601-00002	Fitting 3/8 Compression .....	1
19	00-426566-00001	Tube – Oil Return (HFD50F & HFC50F) .....	1
20	00-426566-00003	Tube – Oil Return (HFD85F & HFC85F) .....	1
21	00-426601-00001	Fitting 3/8 Compression .....	1
22	00-426568-00001	Elbow 3/8 NPT .....	1
23	FP-035-91	Pipe 1/2 x 1 1/8 TBE .....	1
24	00-426606-00001	Basket – Scrap (HFD50F & HFC50F) .....	1
25	00-426606-00002	Basket – Scrap (HFD85F & HFC85F) .....	1
26	00-428518-00001	Splash Guard (HFD50/50F & HFC50/50F) .....	1
27	00-428519-00001	Splash Guard (HFD85/85F & HFC85/85F) .....	1

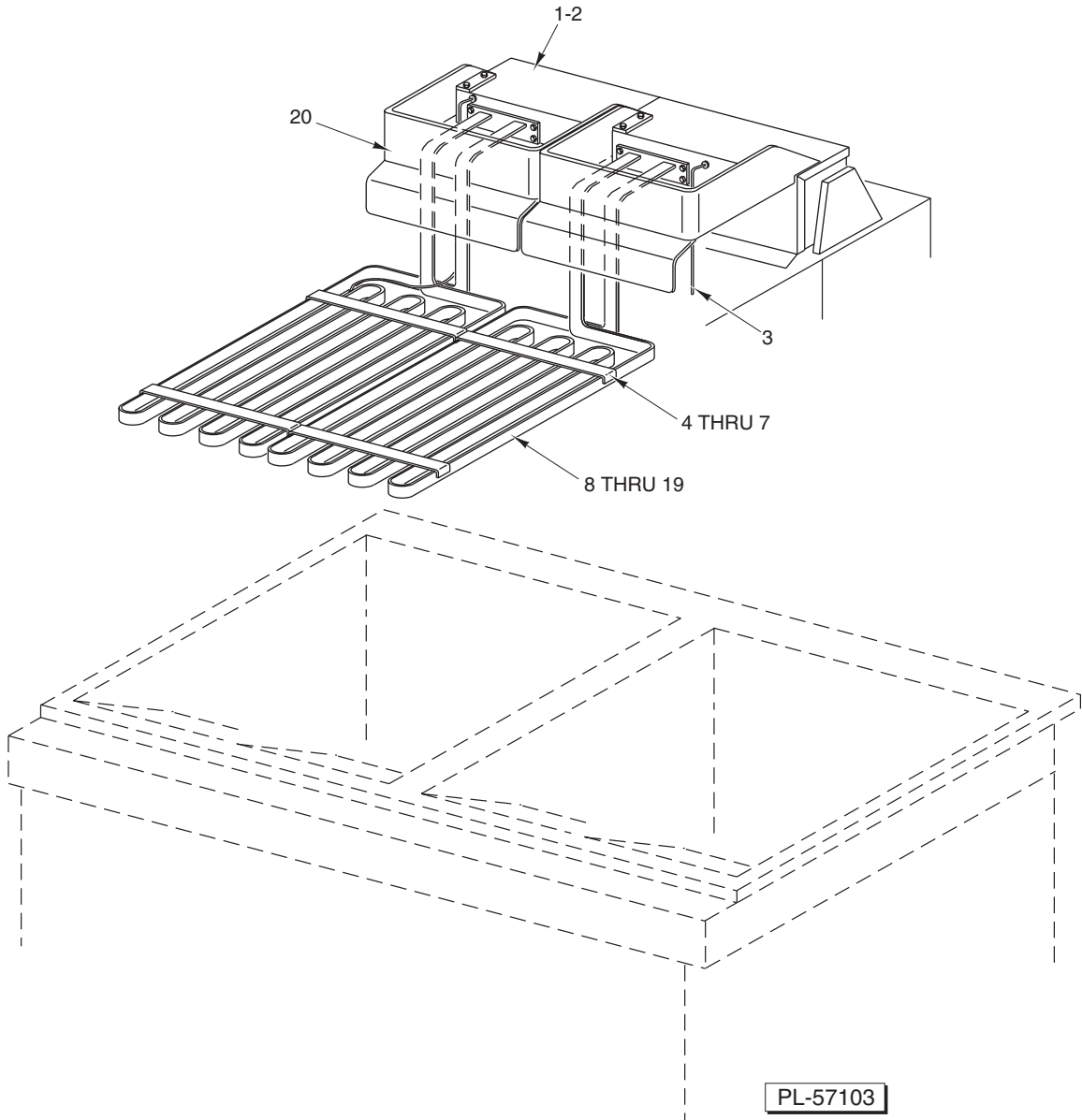


PL-57102

TANK ASSEMBLY

## TANK ASSEMBLY

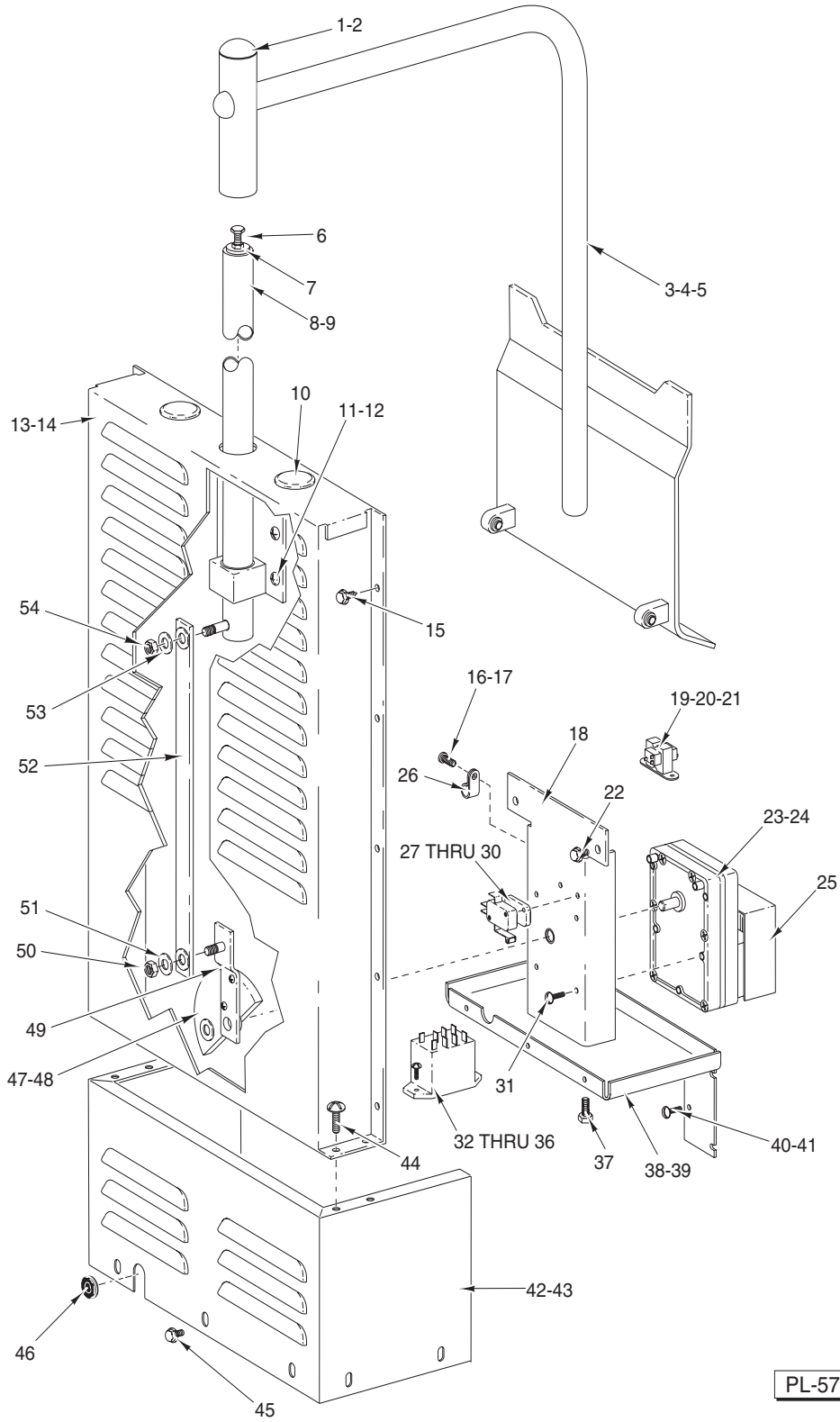
ILLUS. PL-57102	PART NO.	NAME OF PART	AMT.
1	00-421844-000G1	Tank Assy. (HFD50/50F & HFC50/50F) .....	1
2	00-421842-000G1	Tank Assy. (HFD85/85F & HFC85/85F) .....	1
3	00-414460-00001	Strip – Grease Protector (HFD50/50F & HFC50/50F) .....	1
4	00-414460-00002	Strip – Grease Protector (Spec) (HFD85/85F & HFC85/85F) .....	1
5	FP-028-14	Plug – Pipe 1/2 Sq. Hd. ....	AR
6	00-414345-00002	Door – Rear (HFD50/50F & HFC50/50F) .....	1
7	00-414345-00002	Door – Rear (HFD85/85F & HFC85/85F) .....	1
8	00-402570-00003	Eye Bolt .....	AR
9	NS-047-69	Lock Nut 6-32 Hex .....	AR
10	00-406363-00001	Spring – Door (Long) .....	AR
11	00-421893-00002	Caster – W/O Brake (4 In.) .....	2
12	00-421893-00001	Caster – Swivel W/Brake (4 In.) .....	2
13	00-418906-00001	Caster – Adjustable Rigid .....	2
14	00-428907-00001	Caster – Adjustable Swivel .....	2
15	00-413112-00007	Leg (6 1/4 In.) (SST) .....	4
16	00-413112-00009	Leg (6 In.) (SST) .....	4
17	00-413112-00010	Base Plate – Leg .....	4
18	00-426803-000G6	Valve Assy. (HFD50F & HFC50F) (Incls. Items 20 & 21) .....	1
19	00-426803-000G7	Valve Assy. (HFD85F & HFC85F) (Incls. Items 20 & 21) .....	1
20	00-426805-000G1	Switch Assy. ....	1
21	00-426801-00002	Magnet – Switch Element Head .....	1
22	00-414214-00002	Wire Rack (HFD50/50F & HFC50/50F) .....	1
23	00-422378-00001	Wire Rack (HFD85/85F & HFC85/85F) .....	1



**HEATING ELEMENT ASSEMBLY**

**HEATING ELEMENT ASSEMBLY**

ILLUS.	PART NO.	NAME OF PART	AMT.
PL-57103			
1	00-421829-000G1	Element Head Assy. (HFD85/85F & HFC85/85F) .....	1
2	00-422322-000G1	Element Head Assy. (HFD50/50F & HFC50/50F) .....	1
3	00-416782-00001	Bracket – Hi-Limit .....	AR
4	00-414177-00001	Clamp – Bottom Element Assy. (HFD50/50F & HFC50/50F) .....	2
5	00-422380-00002	Clamp – Bottom Element Assy. (HFD85/85F & HFC85/85F) .....	1
6	00-422381-000G1	Clamp – Top Element Assy. (HFD85/85F & HFC85/85F) .....	4
7	00-414178-000G2	Clamp – Top Element Assy. (HFD50/50F & HFC50/50F) .....	4
8	00-416741-000G5	Element Assy. (208 V., 7000 kW) (HFD50/50F & HFC50/50F) .....	2
9	00-416741-000G6	Element Assy. (220 V., 7000 kW) (HFD50/50F & HFC50/50F) .....	2
10	00-416741-000G7	Element Assy. (240 V., 7000 kW) (HFD50/50F & HFC50/50F) .....	2
11	00-416741-000G8	Element Assy. (480 V., 7000 kW) (HFD50/50F & HFC50/50F) .....	2
12	00-416741-000G9	Element Assy. (208 V., 8500 kW) (HFD50/50F & HFC50/50F) .....	2
13	00-416741-00G10	Element Assy. (220 V., 8500 kW) (HFD50/50F & HFC50/50F) .....	2
14	00-416741-00G11	Element Assy. (240 V., 8500 kW) (HFD50/50F & HFC50/50F) .....	2
15	00-416741-00G12	Element Assy. (480 V., 8500 kW) (HFD50/50F & HFC50/50F) .....	2
16	00-421892-000G1	Element Assy. (208 V., 12000 kW) (HFD85/85F & HFC85/85F) .....	2
17	00-421892-000G2	Element Assy. (220 V., 12000 kW) (HFD85/85F & HFC85/85F) .....	2
18	00-421892-000G3	Element Assy. (240 V., 12000 kW) (HFD85/85F & HFC85/85F) .....	2
19	00-421892-000G4	Element Assy. (480 V., 12000 kW) (HFD85/85F & HFC85/85F) .....	2
20	00-422416-00001	Hanger – Twin Basket (HFD50/50F & HFC50/50F) .....	2
	00-414146-00002	Thermostat Hi-Limit (Not Shown) .....	1
	00-426805-000G1	Switch – Element Head (Not Shown) .....	1
	00-426801-00002	Magnet – Switch Element Head (Not Shown) .....	1

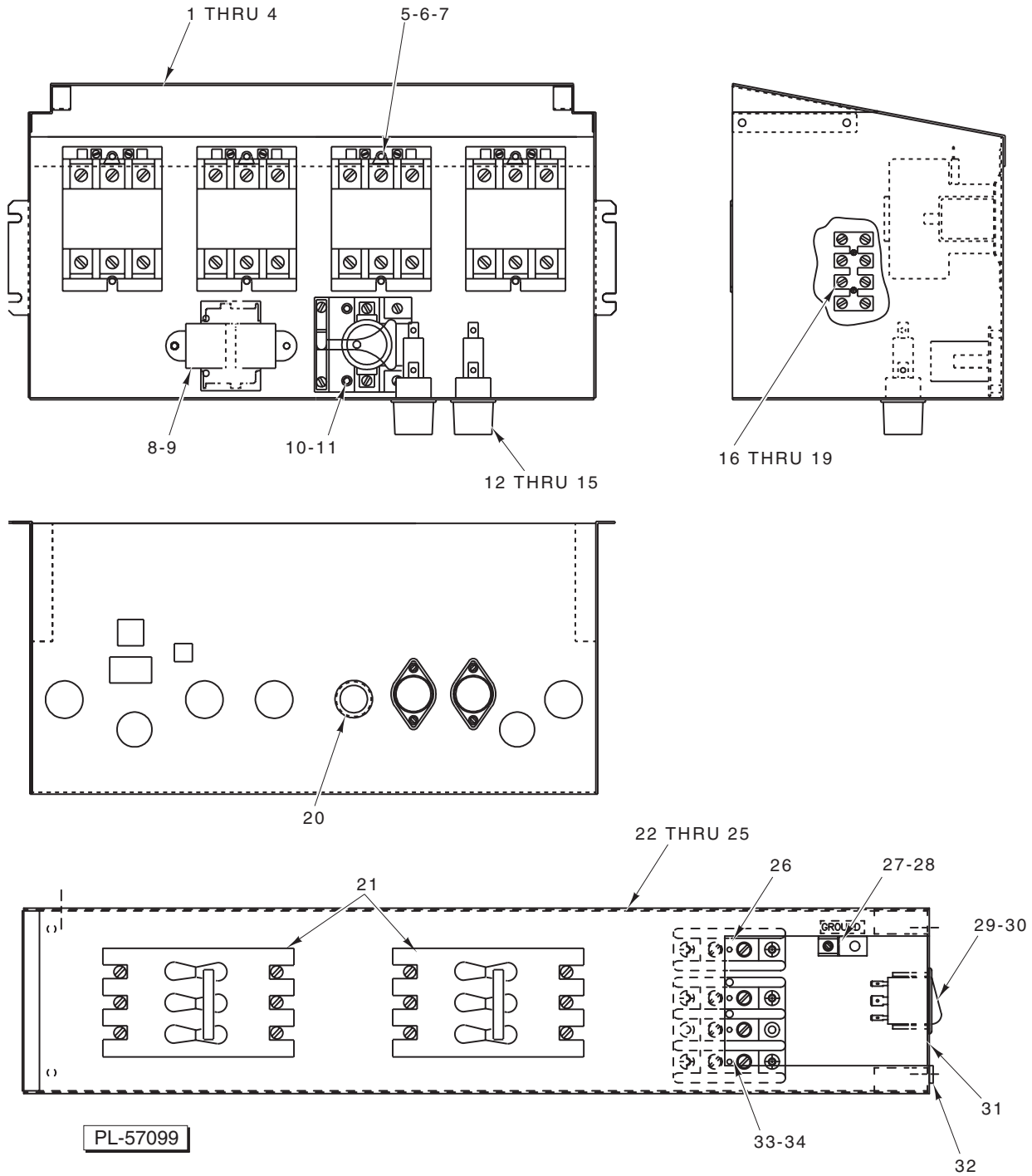


PL-57104

**BASKETLIFT COMPONENTS**

## BASKETLIFT COMPONENTS

ILLUS. PL-57104	PART NO.	NAME OF PART	AMT.
1	00-423374-00001	Cap – Rod End .....	1
2	SC-047-34	Set Screw $\frac{5}{16}$ -18 x $\frac{1}{2}$ Hdls., Cup Pt. ....	1
3	00-422495-000G1	Lift Assy. (HFD50/50F & HFC50/50F) .....	1
4	00-422495-000G2	Lift Assy. (HFD85/85F & HFC85/85F) .....	1
5	00-422495-000G3	Lift Assy. (HFD50/50F & HFC50) .....	1
6	00-418118-00001	Bolt – Adjusting .....	1
7	NS-018-01	Jam Nut $\frac{1}{4}$ -20 Hex .....	1
8	00-418479-000G2	Tube – Basketlift .....	1
9	00-423262-000G1	Tube – Basketlift .....	1
10	PB-004-04	Plug Button ( $1\frac{1}{4}$ ) .....	2
11	SD-032-07	Self-Tapping Screw 10-24 x $\frac{1}{2}$ Hex Washer Hd., Type TT .....	6
12	00-422247-000G1	Bearing Support Assy. ....	1
13	00-422017-00001	Wrap – Top (HFD50/50F & HFC50/50F) .....	1
14	00-422018-00001	Wrap – Top (HFD85/85F & HFC85/85F) .....	1
15	SD-036-03	Self-Tapping Screw 8-18 x $\frac{3}{8}$ Hex Washer Hd., Type AB .....	10
16	SC-109-10	Mach. Screw 6-32 x $\frac{3}{8}$ Pan Hd. ....	1
17	NS-009-07	Mach. Nut 6-32 Hex .....	1
18	00-418123-000G1	Plate – Motor .....	1
19	00-411500-00012	Transformer (120 VAC, 28 V., 20 VA) .....	AR
20	00-411500-00013	Transformer (200-240 VAC, 28 V., 20 VA) .....	AR
21	SD-032-07	Self-Tapping Screw 10-24 x $\frac{1}{2}$ Hex Washer Hd., Type TT .....	2
22	SC-037-80	Cap Screw 10-24 x $\frac{1}{2}$ Hex Hd. ....	6
23	00-418156-00001	Gear – Motor (115 V., 60 Hz.) .....	1
24	00-418156-00002	Gear – Motor (208 V.) .....	1
25	00-418517-00001	Shroud – Motor .....	1
26	00-078752-00012	Clamp – Cable .....	1
27	00-418159-00001	Block – Cam Switch .....	1
28	00-411496-000F3	Switch – Micro .....	1
29	SC-112-90	Mach. Screw 4-40 x 1 Pan Hd. ....	2
30	NS-009-12	Mach. Nut 8-32 Hex .....	2
31	SC-018-47	Mach. Screw 10-32 x $\frac{3}{4}$ Pan Hd. ....	4
32	00-416535-00004	Relay S.P.D.T. 24 V. Coil (Located on rear of panel) .....	1
33	00-416535-00006	Switch – Relay (HFC85F) .....	AR
34	00-416535-00007	Switch – Relay (240 V.) (HFD50/50F/85/85F & HFC50/50F/85) .....	AR
35	SC-109-10	Mach. Screw 6-32 x $\frac{3}{8}$ Pan Hd. ....	2
36	NS-009-07	Mach. Nut 6-32 Hex .....	2
37	SC-037-80	Cap Screw 10-24 x $\frac{1}{2}$ Hex Hd. ....	2
38	00-422730-00001	Base – Motor Mounting (HFD85/85F & HFC85/85F) .....	1
39	00-422729-00001	Base – Motor Mounting (HFD50/50F & HFC50/50F) .....	1
40	SC-037-80	Cap Screw 10-24 x $\frac{1}{2}$ Hex Hd. ....	2
41	SD-032-07	Self-Tapping Screw 10-24 x $\frac{1}{2}$ Hex Washer Hd., Type TT .....	2
42	00-418480-00001	Wrap – Bottom (HFD50/50F & HFC50/50F) .....	1
43	00-418510-00001	Wrap – Bottom (HFD85/85F & HFC85/85F) .....	1
44	SD-036-03	Self-Tapping Screw 8-18 x $\frac{3}{8}$ Hex Washer Hd., Type AB .....	14
45	SC-037-80	Cap Screw 10-24 x $\frac{1}{2}$ Hex Hd. ....	2
46	00-418482-00001	Grommet .....	1
47	00-418475-000G1	Crank-Arm Assy. ....	1
48	SC-055-02	Set Screw $\frac{1}{4}$ -20 x $\frac{1}{4}$ Hdls., Cup Pt. ....	2
49	SD-015-41	Self-Tapping Screw 8-32 x $\frac{1}{2}$ Phil. Pan Hd., Taptite .....	2
50	NS-047-73	Lock Nut $\frac{5}{16}$ -18 Hex .....	1
51	WS-004-33	Washer .....	1
52	00-418477-000G2	Coupler Assy. ....	1
53	WS-004-33	Washer .....	1
54	NS-047-73	Lock Nut $\frac{5}{16}$ -18 Hex .....	1

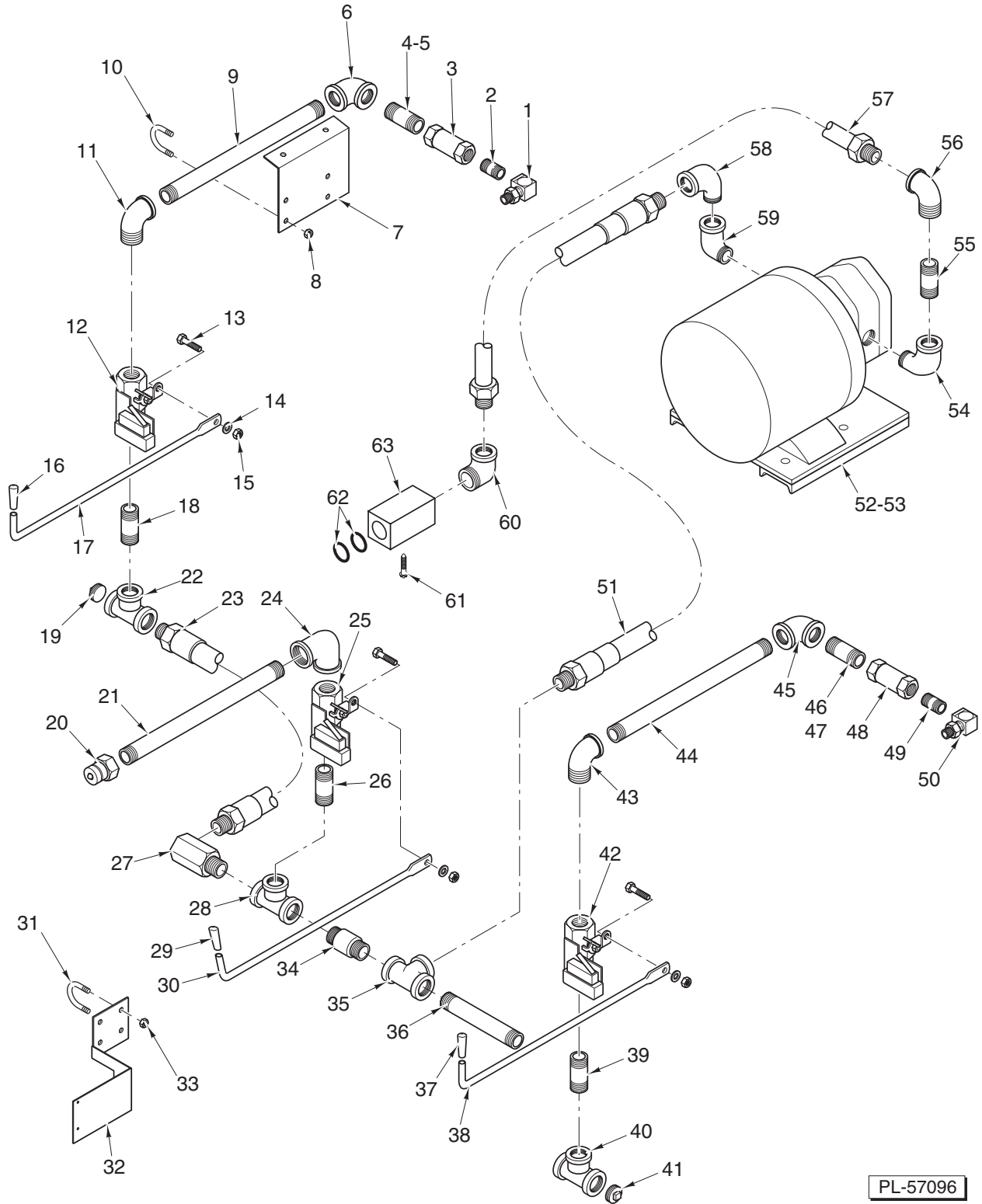


**POWER SUPPLY BOX**



## POWER SUPPLY BOX

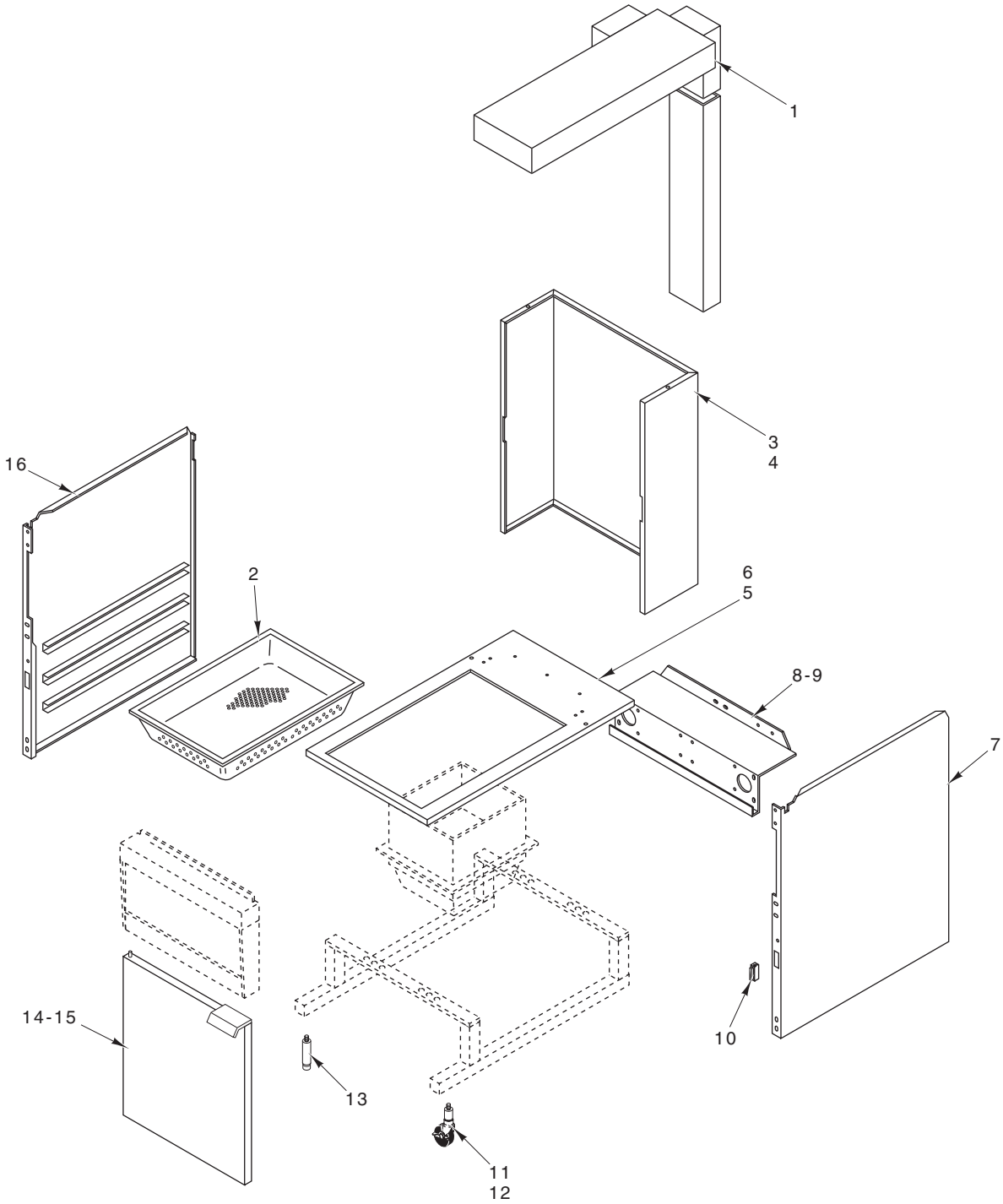
ILLUS.	PART NO.	NAME OF PART	AMT.
PL-57099			
1	00-427803-000G1	Box – Power Supply HFD50/50F & HFC50/50F .....	1
2	00-427796-000G1	Lid – Power Supply HFD50/50F & HFC50/50F .....	1
3	00-427803-000G2	Box – Power Supply (HFD85/85F & HFC85/85F) .....	1
4	00-427796-000G2	Lid – Power Supply (HFD85/85F & HFC85/85F) .....	1
5	00-411497-000C5	Contacto – 3 Pole (40 Amp., 230 V.) .....	4
6	00-411497-000C3	Contacto – 3 Pole (40 Amp., 120 V.) .....	4
7	SD-036-96	Self-Tapping Screw 8-18 x 3/4 Hex Hd., Type AB .....	8
8	00-411500-00012	Transformer (120 VAC, 28 V., 40 VA) .....	1
9	00-411500-00013	Transformer (200-240 VAC, 28 V., 40 VA) .....	1
10	NS-046-89	Nut Assy. 6-32 Hex KEPS (HFD50F/85F & HFC50F/85F) .....	4
11	00-411497-000A3	Relay S.P.D.T. (24 V.) (HFD50F/85F & HFC50F/85F) .....	1
12	FE-019-40	Fuse (15 Amp., 300 V.) .....	2
13	FE-023-55	Holder – Fuse (15 Amp., 300 V.) .....	2
14	NS-009-07	Mach. Nut 6-32 Hex (HFD50F/85F & HFC50F/85F) .....	4
15	SC-021-10	Mach. Screw 6-32 x 1/2 Rd. Hd. ....	4
16	00-414208-00002	Barrier – Terminal .....	1
17	NS-009-07	Mach. Nut 6-32 Hex .....	2
18	SC-119-90	Mach. Screw 6-32 x 1 Pan Hd. ....	2
19	WL-004-40	Lockwasher #10 Medium .....	2
20	PB-002-26	Plug – Button .....	1
21	00-411501-00021	Breaker – (50 Amp., 24kW) (3-Pole) (HFD85/85F & HFC85/85F) .....	2
22	00-428270-00001	Box – Breaker (HFD50F & HFC50F) .....	1
23	00-427294-00001	Box – Breaker (HFD85F & HFC85F) .....	1
24	00-428271-00001	Lid – Breaker Box (HFD50F & HFC50F) .....	1
25	00-427295-00001	Lid – Breaker Box (HFD85F & HFC85F) .....	1
26	00-410472-00009	Block – 1 Pole Terminal .....	1
27	00-417856-00001	Lug – Ground .....	1
28	SD-036-96	Self-Tapping Screw 8-18 3/4 Hex Hd., Type AB .....	AR
29	00-411496-000B4	Switch (HFD50F/85F & HFC50F/85F) .....	1
30	00-426251-00001	Plug – Switch (Non-Pump) .....	1
31	00-428448-00001	Cover – Access .....	1
32	SD-036-96	Self-Tapping Screw 8-18 x 3/4 Hex Hd., Type AB .....	AR
33	00-410472-00008	Block – 3 Pole Terminal .....	1
34	SD-036-96	Self-Tapping Screw 8-18 x 3/4 Hex Hd., Type AB .....	AR



**OIL RETURN**

## OIL RETURN

ILLUS.	PART NO.	NAME OF PART	AMT.
PL-57096			
1	00-419251-00001	Fitting – 90 Deg. Swivel .....	AR
2	FP-086-28	Pipe 1/2 x 7/8 TBE .....	1
3	00-418786-00001	Valve – Check .....	AR
4	FP-035-94	Pipe 1/2 x 1 1/2 TBE (HFD85F & HFC85F) .....	AR
5	FP-035-96	Pipe 1/2 x 2 1/2 TBE (HFD50F & HFC50F) .....	1
6	FP-077-68	Elbow 1/2 x 90 Deg. ....	AR
7	00-421868-00001	Bracket – Oil Return .....	1
8	NS-046-52	Nut Assy. 1/4-20 Hex .....	4
9	00-426636-00001	Pipe 1/2 x 1 1/2 .....	AR
10	00-521820	U-Bolt .....	2
11	FP-013-17	Elbow – Street 1/2 x 90 Deg. ....	AR
12	00-419291-000G1	Valve Assy. ....	AR
13	SC-113-34	Shoulder Screw 1/4-20 x 1/2 Hex Soc. Hd. ....	3
14	WS-005-06	Washer .....	3
15	NS-046-52	Nut Assy. 1/2-20 Hex KEPS .....	3
16	00-416435-00001	Grip (Red) .....	AR
17	00-418583-00003	Rod – Refill .....	AR
18	FP-035-94	Pipe 1/2 x 1 1/2 TBE .....	AR
19	FP-028-14	Pipe – Plug 1/2 Sq. Hd. ....	1
20	00-418781-00001	Quick Disconnect .....	1
21	FP-083-37	Pipe 1/2 x 9 .....	1
22	FP-019-25	Tee 1/2 x 1/2 x 1/2 .....	1
23	00-418783-00009	Hose .....	1
24	FP-077-68	Elbow 1/2 x 90 Deg. ....	1
25	00-419291-000G1	Valve Assy. ....	1
26	FP-035-94	Pipe 1/2 x 1 1/2 TBE .....	1
27	00-418968-00001	Fitting – 90 Deg. Swivel .....	1
28	FP-019-25	Tee 1/2 x 1/2 x 1/2 .....	1
29	00-416435-00002	Grip (White) .....	1
30	00-418583-00004	Rod – Discard .....	1
31	00-521820	U-Bolt .....	2
32	00-427435-00001	Bracket – Pull Rod .....	1
33	NS-046-52	Nut Assy. 1/4-20 Hex .....	4
34	FP-035-95	Pipe 1/2 x 2 TBE .....	1
35	FP-019-25	Tee 1/2 x 1/2 x 1/2 .....	1
36	FP-035-95	Pipe 1/2 x 2 TBE .....	AR
37	00-416435-00001	Grip (Red) .....	1
38	00-418583-00003	Rod – Refill .....	1
39	FP-035-94	Pipe 1/2 x 1 1/2 TBE .....	AR
40	FP-019-25	Tee 1/2 x 1/2 x 1/2 .....	AR
41	FP-028-14	Pipe – Plug 1/2 Sq. Hd. ....	AR
42	00-419291-000G1	Valve Assy. ....	AR
43	FP-013-17	Elbow – Street 1/2 x 90 Deg. ....	AR
44	00-426636-00001	Pipe 1/2 x 1 1/2 .....	AR
45	FP-077-68	Elbow 1/2 x 90 Deg. ....	AR
46	FP-035-94	Pipe 1/2 x 1 1/2 TBE (HFD85F & HFC85F) .....	AR
47	FP-035-96	Pipe 1/2 x 2 1/2 TBE (HFD50F & HFC50F) .....	AR
48	00-418786-00001	Valve – Check .....	AR
49	FP-086-28	Pipe 1/2 x 7/8 TBE .....	AR
50	00-419251-00001	Fitting – 90 Deg. Swivel .....	AR
51	00-418783-00005	Hose .....	1
52	00-417792-00001	Pump Motor Assy. (120 V., 60 Hz.) .....	1
53	00-417792-00004	Pump Motor Assy. (230 V., 50/60 Hz.) .....	1
54	FP-077-68	Elbow 1/2 x 90 Deg. ....	AR
55	FP-035-94	Pipe 1/2 x 1 1/2 TBE .....	AR
56	FP-077-68	Elbow 1/2 x 90 Deg. ....	AR
57	00-426602-00002	Flex Hose .....	1
58	FP-013-17	Elbow – Street 1/2 x 90 Deg. ....	1
59	FP-013-17	Elbow – Street 1/2 x 90 Deg. ....	1
60	FP-013-17	Elbow – Street 1/2 x 90 Deg. ....	AR
61	SC-114-01	Mach. Screw 10-32 x 3/8 Hex Washer Hd. ....	1
62	00-426567-00002	O-Ring (Viton) .....	1
63	00-426567-00001	Receptical – Oil Suction .....	1
*	00-411496-000F7	Micro Switch (Included with Items 12, 25, & 42) .....	1



PL-57100

**DUMP STATION ASSEMBLY**

**DUMP STATION ASSEMBLY**

ILLUS.	PART NO.	NAME OF PART	AMT.
PL-57100			
1	00-422609-00002	Heat Lamp Assy. ....	1
2	00-415585-00001	Pan – Perforated ....	1
3	00-422021-00002	Wrap – Flue (HG015) ....	1
4	00-422022-00002	Wrap – Flue (HG021) ....	1
5	00-422371-000G5	Top – Dump Station Assy. (HG015) ....	1
6	00-422372-000G5	Top – Dump Station Assy. (HG021) ....	1
7	00-420596-00004	Body – Side (RH) ....	1
8	00-416950-00001	Body – Bottom Rear (HG015) ....	1
9	00-419652	Body – Bottom Rear (HG021) ....	1
10	00-426573-00001	Catch – Magnetic ....	1
11	00-418906-00001	Caster – Adjustable (Rigid) ....	AR
12	00-418907-00001	Caster – Adjustable (Swivel) ....	AR
13	00-413112-00009	Legs ....	AR
14	00-426562-000G2	Door Assy. (HG015) ....	1
15	00-426562-000G6	Door Assy. (HG021) ....	1
16	00-420596-00003	Body – Side (LH) ....	1

### ACCESSORIES

PART NO.	NAME OF PART	AMT.
00-418783-00010	Fitting – Swivel Straight (HFC85F & HFC85F) .....	1
00-418783-00005	Hose – Flex 1/2 I.D. x 5/8 O.D. x 28 Lg. (HFD50F/85F & HFC50F/85F) .....	1
00-418783-00009	Hose – Flex 1 1/2 Lg. (HFD50F/85F & HFC50F/85F) .....	1
00-414848-000G2	Vat Cover Assy. (HFD50/50F & HFC50/50F) .....	3
00-418358-000G1	Vat Cover Assy.(HFD85/85F & HFC85/85F) .....	3
00-418346-00002	Cord – Electrical 120 V. (HFD50/85 & HFC50/85) .....	1
00-078752-00003	Clamp – Cable (HFD50/85 & HFC50/85) .....	1



