



# CATALOG OF REPLACEMENT PARTS

## HG SERIES FRYER WITH KLEEN SCREEN PLUS

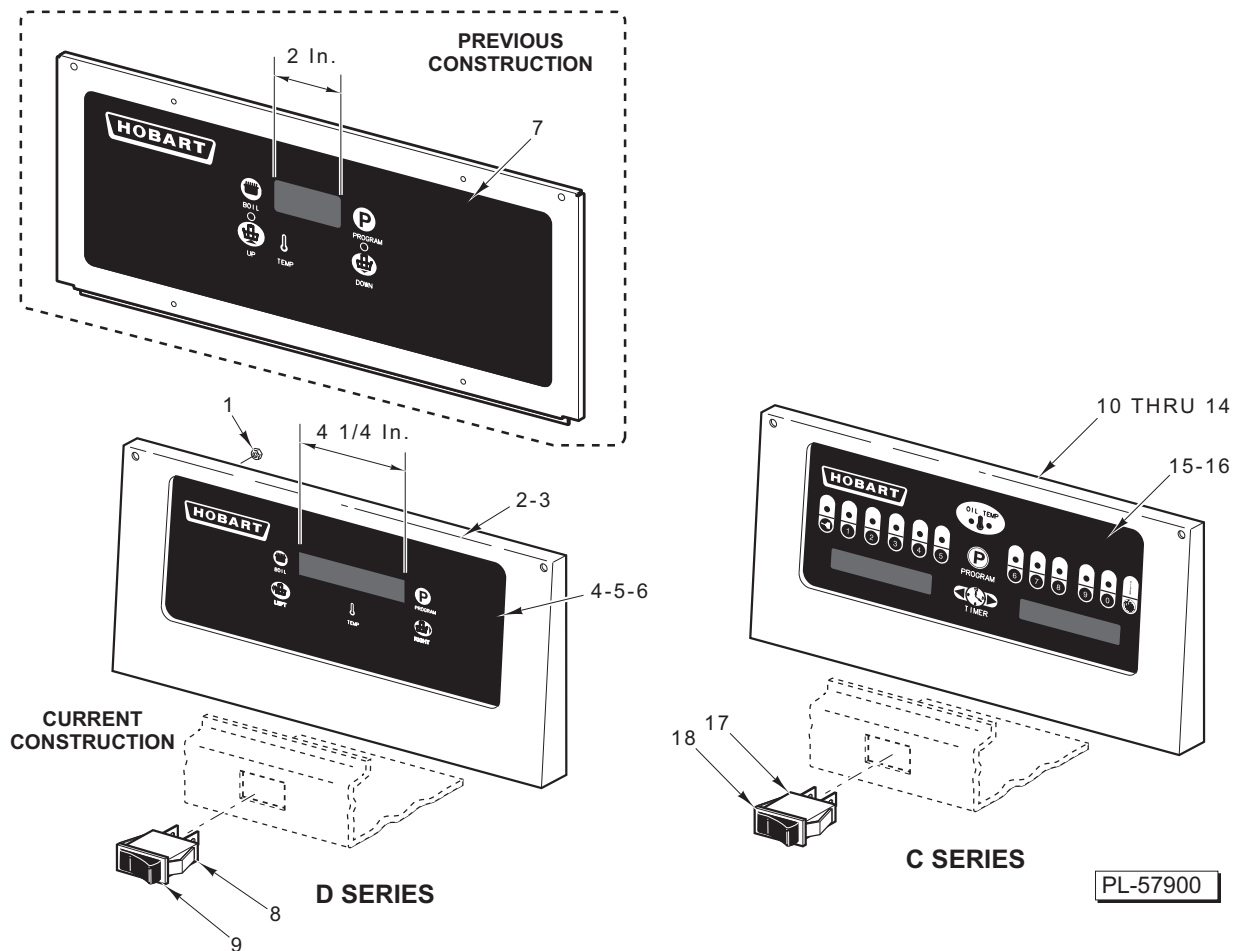
2HG45DF	ML-136457
2HG65DF	ML-136458
2HG85DF	ML-136459
3HG45DF	ML-136460
3HG65DF	ML-136461
4HG45DF	ML-136463
2HG45CF	ML-136464
2HG65CF	ML-136465
2HG85CF	ML-136466
3HG45CF	ML-136467
3HG65CF	ML-136468

### PRIOR MLS COVERED IN THIS MANUAL

2HG45MF	ML-136450
2HG65MF	ML-136451
2HG85MF	ML-136452
3HG45MF	ML-136453
3HG65MF	ML-136454
3HG85MF	ML-136455
4HG45MF	ML-136456
3HG85DF	ML-136462
3HG85CF	ML-136469
4HG45CF	ML-136470

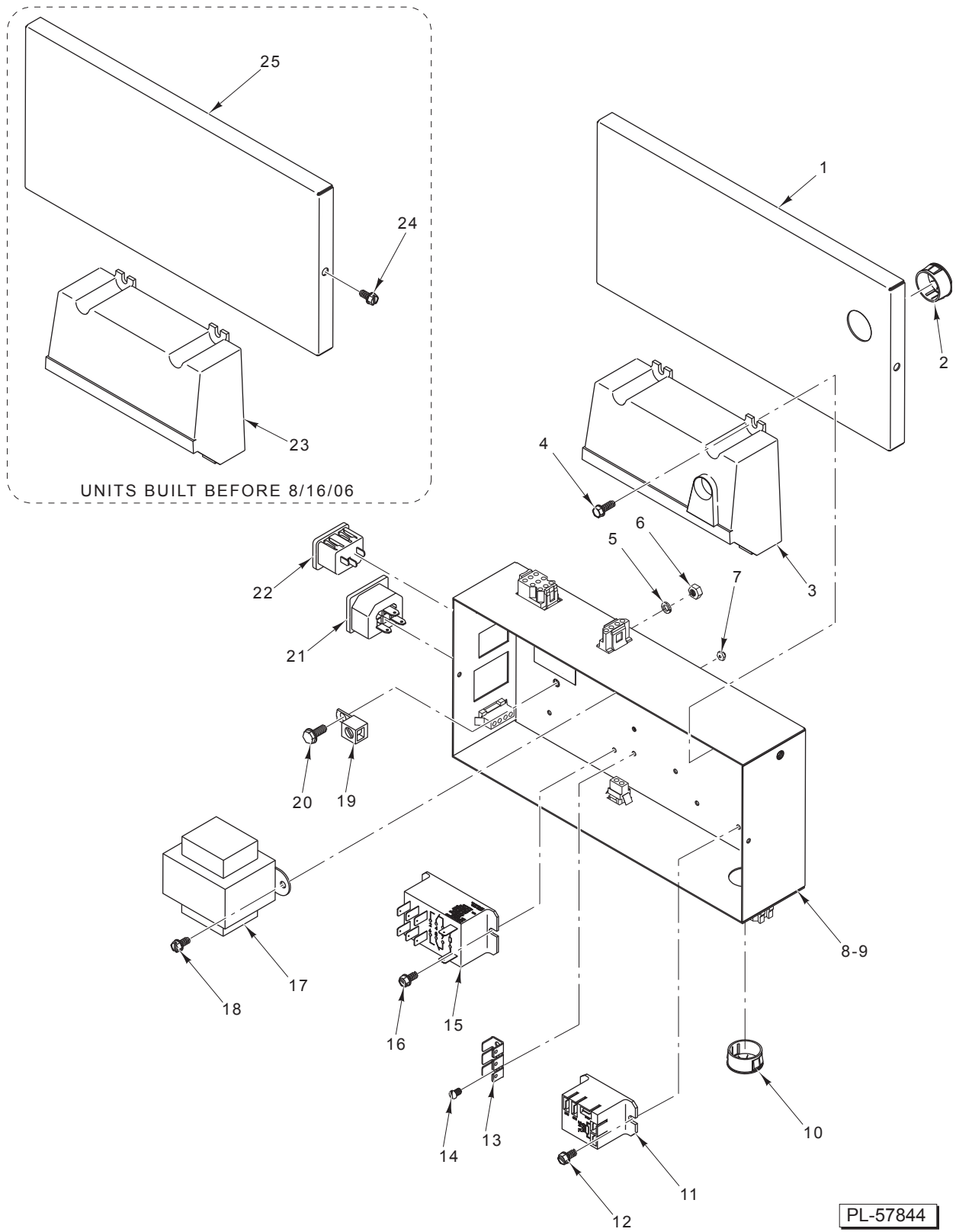
### Table Of Contents

3	CONTROL PANEL (NCC)
5	POWER SUPPLY BOX
7	BODY UNIT (HGCF & HGDF SERIES)
9	BODY UNIT (HGMF SERIES)
11	BURNER COMPONENTS (HGCF & HGDF SERIES)
13	BURNER COMPONENTS (HGMF SERIES)
15	GAS INLET MANIFOLD (HGCF & HGDF SERIES)
16	GAS INLET MANIFOLD (HGMF SERIES) (PREVIOUS CONSTRUCTION)
17	GAS INLET MANIFOLD (HGMF SERIES) (CURRENT CONSTRUCTION)
19	TANK AND DRAIN
21	OIL RETURN (HGCF & HGDF SERIES)
23	OIL RETURN (HG45MF)
24	OIL RETURN (HG65MF & HG85MF)
27	BASKETLIFT COMPONENTS (HGDF & HGCF SERIES)
29	FILTER ASSEMBLY (PREVIOUS CONSTRUCTION)
31	FILTER ASSEMBLY (CURRENT CONSTRUCTION)



**CONTROL PANEL (NCC)**

ILLUS.	PART NO.	NAME OF PART	AMT.
	PL-57900		
1	NS-046-89	Nut Assy. 6-32 Hex .....	4
2	00-426815-000G1	Plate Assy. – Mounting (HG45DF).....	1
3	00-426815-000G2	Plate Assy. – Mounting (HG65/85DF).....	1
4	00-497745-00002	Overlay – Hobart (Filter).....	1
5	00-497745-00004	Overlay – Hobart (Boil).....	1
6	00-913012-00007	Control Assy. – Solid State (Filter Button) (Incls. Item 4).....	1
7	00-427820-00002	Overlay – Control Panel.....	1
8	00-427755-000G1	Switch Assy. – Power.....	1
9	00-428906-00001	Overlay – Power .....	1
10	00-913012-00004	Computer Cooking Assy. (Filter Button) (Incls. Item 15).....	1
11	00-913012-00001	Computer Cooking Assy. (Boil Button) (Incls. Item 16).....	1
12	00-426815-000G1	Plate Assy. – Mounting (HG45CF).....	1
13	00-426815-000G2	Plate Assy. – Mounting (HG65/85CF).....	1
14	NS-046-89	Nut Assy. 6-32 Hex .....	4
15	00-426732-00002	Overlay – Control Panel (Filter Button).....	1
16	00-497422-00002	Overlay – Control Panel (Boil Button).....	1
17	00-427755-000G1	Switch Assy. – Power.....	1
18	00-428906-00001	Overlay – Power .....	1

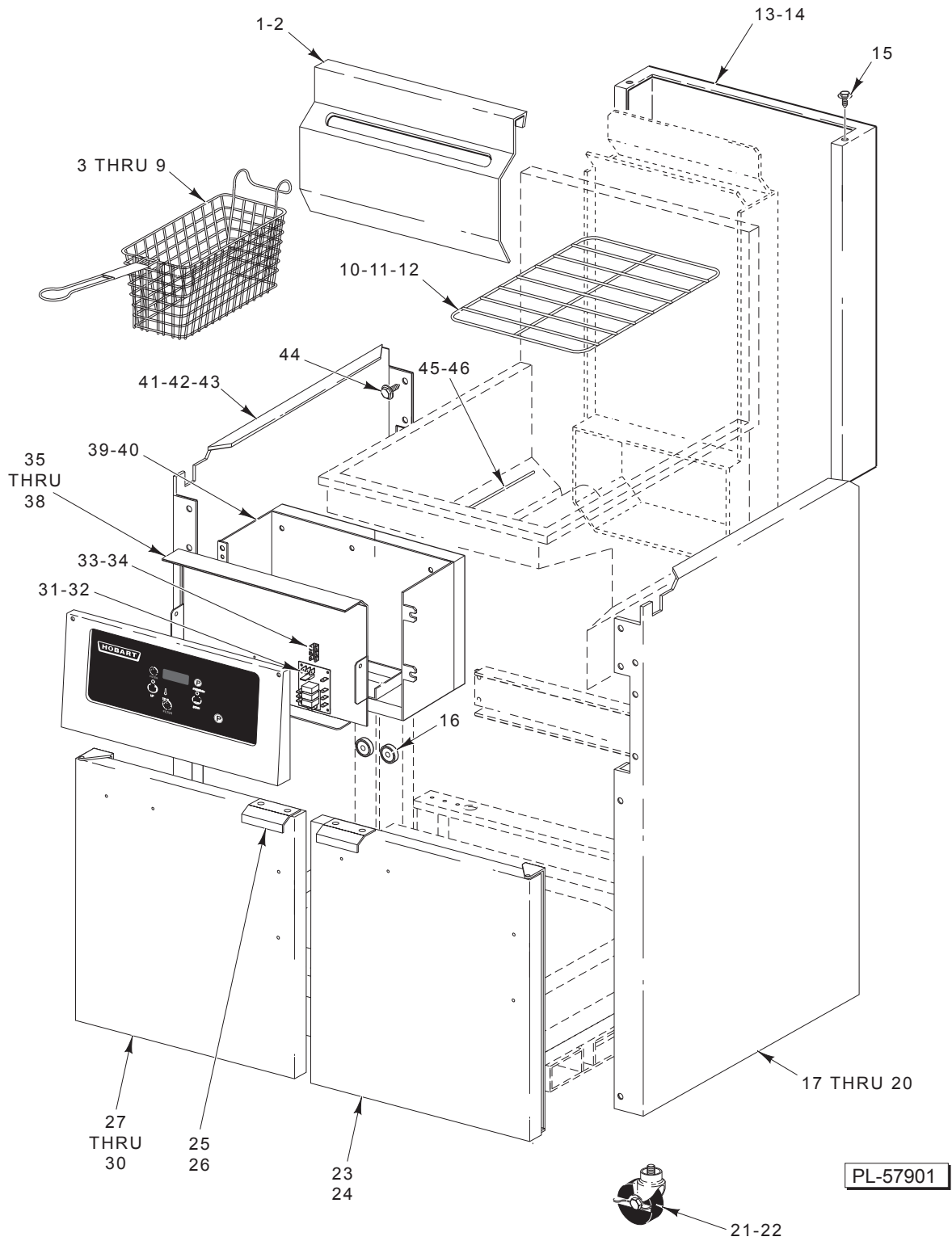


**POWER SUPPLY BOX**

**POWER SUPPLY BOX**

ILLUS.	PART NO.	NAME OF PART	AMT.
PL-57844			
1	00-428684-00002	Lid – Power Supply.....	1
2	FE-024-24	Bushing – Electrical Snap.....	1
3	00-857207-00001	Module – Ignition.....	1
4	SD-037-49	Self-Tapping Screw 8-18 x 1/2 Hex Washer Hd., Type AB.....	4
5	WL-004-40	Lockwasher #10 Helical.....	1
6	NS-044-09	Nut Assy. 10-24 Hex KEPS.....	1
7	NS-047-32	Lock Nut 4-40 Hex.....	2
8	00-428716-000G1	Box – Power Supply.....	1
9	00-428685-000G2	Box – Power Supply (120 V.).....	1
10	FE-024-28	Bushing – Electrical Snap.....	1
11	00-497125-00001	Relay (SPDT, 24 VAC).....	1
12	SD-036-03	Self-Tapping Screw 8-18 x 3/8 Hex Washer Hd., Type AB.....	2
13	00-419317	Lug – Terminal.....	1
14	SC-060-23	Mach. Screw 4-40 x 1/4 Slotted Rd. Hd. ....	2
15	00-428864-00001	Relay.....	1
16	SD-036-03	Self-Tapping Screw 8-18 x 3/8 Hex Washer Hd., Type AB.....	2
17	00-411500-00012	Transformer (40 Amp, 120 V.).....	1
18	SD-036-03	Self-Tapping Screw 8-18 x 3/8 Hex Washer Hd., Type AB.....	2
19	00-417856-00001	Lug – Ground.....	1
20	SD-032-07	Self-Tapping Screw 10-24 x 1/2 Hex Washer Hd., Type TT.....	1
21	00-419973-000G2	Receptacle – Female Power.....	1
22	00-419973-000G1	Receptacle – Male Power.....	1
*23	-	Module – Ignition (Machines With Electronic Ignition) (Units Built Before 8/16/06).....	1
24	SD-036-03	Self-Tapping Screw 8-18 x 3/8 Hex Washer Hd., Type AB (Units Built Before 8/16/06).....	2
25	00-428684-00001	Lid – Power Supply Box (Units Built Before 8/16/06).....	1
	00-419967-00005	Cord – Power Supply (84 In.).....	1
	00-419967-00003	Jumper – Extension (24 1/2 In.).....	1

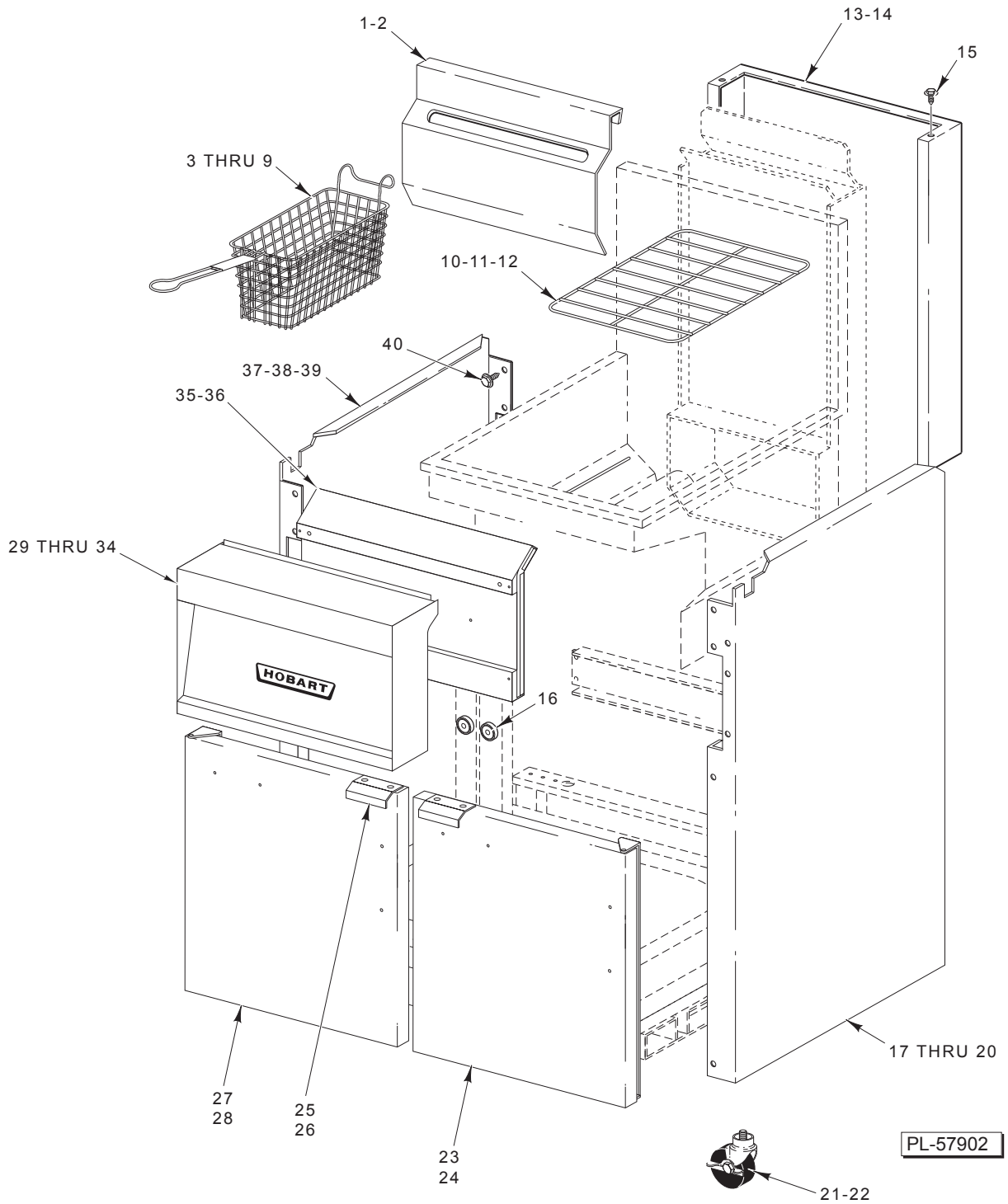
\* No longer available. To replace, order items 1, 2, & 3.



**BODY UNIT (HGCF & HGDF SERIES)**

**BODY UNIT (HGCF & HGDF SERIES)**

ILLUS.	PART NO.	NAME OF PART	AMT.
	PL-57901		
1	00-417056-00002	Hanger – Basket (HG45DF & HG45CF).....	2
2	00-418321-00002	Hanger – Basket (HG65/85DF & HG65/85CF).....	2
3	00-499223-00001	Basket – Twin (HG45DF & HG45CF).....	AR
4	00-499223-00009	Basket – Single (HG45DF & HG45CF).....	AR
5	00-499223-00010	Basket – Single (HG65DF & HG65CF).....	AR
6	00-499223-00002	Basket – Twin (HG65DF & HG65CF).....	AR
7	00-499223-00011	Basket – Single (HG85DF & HG85CF).....	AR
8	00-499223-00003	Basket – Twin (HG85DF & HG85CF).....	AR
9	00-499223-00006	Basket – Triple (HG65).....	AR
10	00-427883-00002	Screen – Basket Support (HG45DF & HG45CF).....	2
11	00-427883-00003	Screen – Basket Support (HG65DF & HG65CF).....	2
12	00-427883-00004	Screen – Basket Support (HG85DF & HG85CF).....	2
13	00-416959-00002	Flue – Wrap (SST) (HG45DF & HG45CF).....	2
14	00-418336-00002	Flue – Wrap (SST) (HG65/85DF & HG65/85CF).....	2
15	SD-032-07	Self-Tapping Screw 10-24 x 1/2 Hex Washer Hd., Type TT.....	AR
16	00-497296-000G1	Magnet Assy.....	2
17	00-419777-00003	Body – LH Side (SST) (HG85DF & HG85CF).....	1
18	00-417711-00001	Body – LH Side (SST) (HG45/65DF & HG45/65CF).....	1
19	00-419648-00001	Body – LH Side (SST) (HG45/65DF & HG45/65CF).....	1
20	00-420596-00003	Body – LH Side (SST) (NFR) (HG85DF & HG85CF).....	1
21	00-418907-00001	Caster – Swivel Assy. (Adjustable).....	2
22	00-418907-00003	Caster.....	2
23	00-499487-000G4	Door Assy. – With Hinge (RH) (HG45DF & HG45CF).....	1
24	00-499487-000G8	Door Assy. – With Hinge (RH) (HG65/85DF & HG65/85CF).....	1
25	00-419653	Handle.....	2
26	RS-033-09	Rivet – Pop (0.187).....	4
27	00-499487-000G3	Door Assy. With Hinge (LH) (HG45DF & HG45CF).....	1
28	00-499487-000G7	Door Assy. With Hinge (LH) (HG65/85DF & HG65/85CF).....	1
29	00-499487-000G1	Door Assy. (LH) (3HG45CF/DF).....	1
30	00-499487-000G5	Door Assy. (LH) (3HG65CF).....	1
31	00-427759-00001	Control – Interface.....	1
32	SD-024-40	Self-Tapping Screw 6-32 x 5/8 Phil. Pan Hd., Type TT.....	4
33	00-419317	Terminal – Stationary.....	1
34	SC-060-23	Mach. Screw 4-40 x 1/4 Slotted Rd. Hd.....	2
35	00-428541-00001	Plate – Control Mounting (HG45DF & HG45CF).....	1
36	00-428690-00001	Plate – Control Mounting (HG65/85DF & HG65/85CF).....	1
37	00-428700-000G1	Control Assy. – Box (HG45CF/DF & 2HG85CF/DF).....	1
38	00-428700-000G2	Control Assy. – Box (3HGDF, 3HG45CF, & 3HG65CF).....	1
39	00-428542-00001	Heat Shield (HG45DF & HG45CF).....	1
40	00-428689-00001	Heat Shield (HG65/85DF & HG65/85CF).....	1
41	00-419777-00004	Body – RH Side (SST) (HG85DF & HG85CF).....	1
42	00-417711-00002	Body – RH Side (SST) (HG45/65DF & HG45/65CF).....	1
43	00-419648-00002	Body – RH Side (SST) (HG45/65DF & HG45/65CF).....	1
44	SD-036-03	Self-Tapping Screw 8-18 x 3/8 Hex Washer Hd., Type AB.....	AR
45	00-419379-00001	Probe – Thermistor.....	1
46	00-419592-00001	Clip – Thermistor Probe.....	1
	00-428688-00001	Bracket – Power Supply.....	1

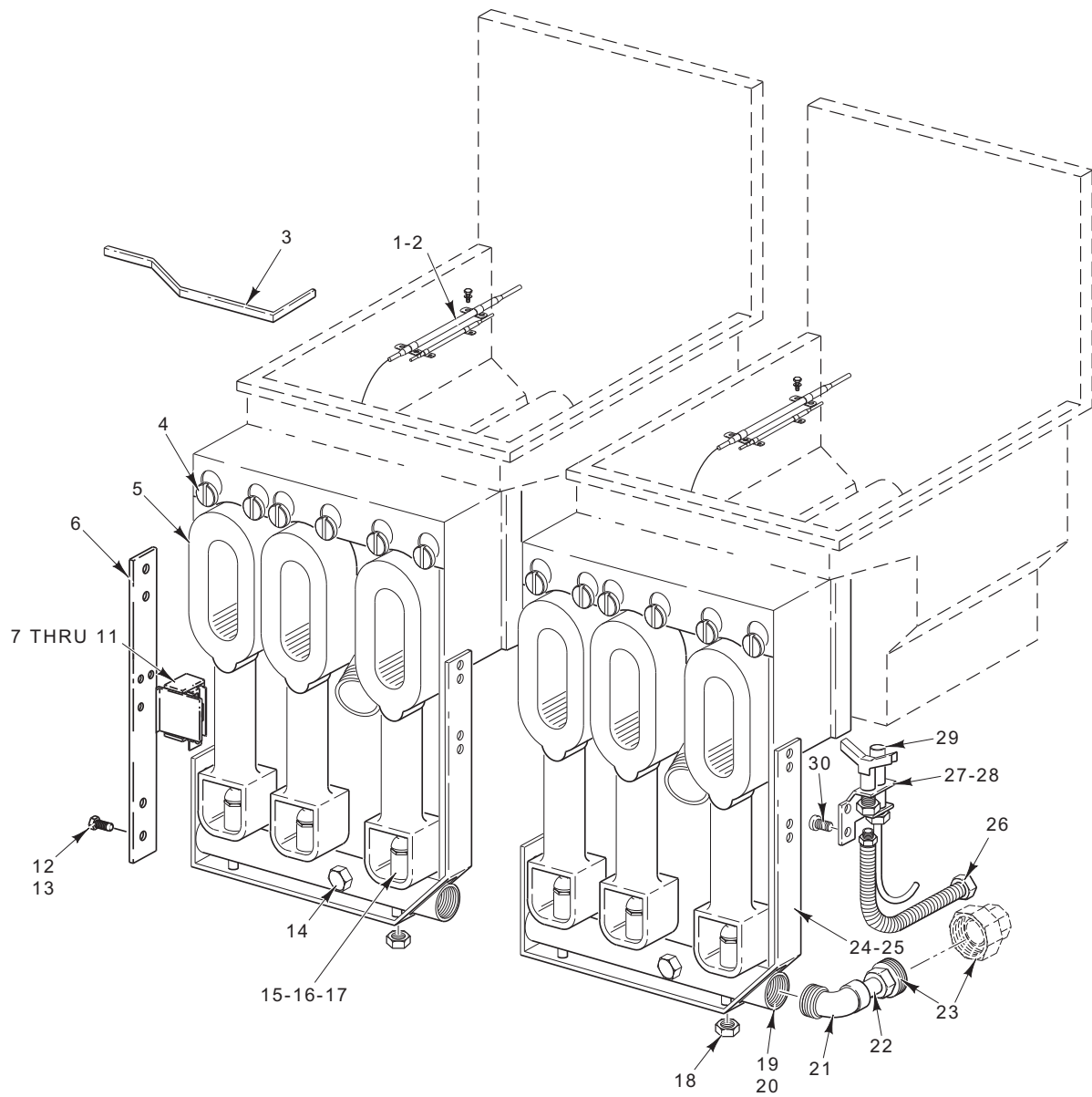


**BODY UNIT (HGMF SERIES)**



**BODY UNIT (HGMF SERIES)**

ILLUS. PL-57902	PART NO.	NAME OF PART	AMT.
1	00-417056-00002	Hanger – Basket (HG45MF).....	2
2	00-418321-00002	Hanger – Basket (HG65/85MF).....	2
3	00-499223-00001	Basket – Twin (HG45MF).....	AR
4	00-499223-00009	Basket – Large Single (HG45MF).....	AR
5	00-499223-00010	Basket – Single (HG65MF).....	AR
6	00-499223-00002	Basket – Twin (HG65MF).....	AR
7	00-499223-00011	Basket – Single (HG85MF).....	AR
8	00-499223-00003	Basket – Twin (HG85MF).....	AR
9	00-499223-00006	Basket – Triple (HG65MF).....	AR
10	00-427883-00002	Rack – Basket Support (HG45F).....	2
11	00-427883-00003	Rack – Basket Support (HG65F).....	2
12	00-427883-00004	Rack – Basket Support (HG85F).....	2
13	00-416959-00002	Flue – Wrap (SST) (HG45MF).....	2
14	00-418336-00002	Flue – Wrap (SST) (HG65/85MF).....	2
15	SD-032-07	Self-Tapping Screw 10-24 x 1/2 Hex Washer Hd., Type TT.....	AR
16	00-497296-000G1	Magnet Assy.....	2
17	00-419777-00003	Body – LH Side (SST) (HG85MF).....	1
18	00-417711-00001	Body – LH Side (SST) (HG45/65MF).....	1
19	00-420596-00003	Body – LH Side (SST) (NFR) (HG85MF).....	1
20	00-419648-00001	Body – LH Side (SST) (HG45/65MF).....	1
21	00-418907-00001	Caster – Swivel Assy. (Adjustable).....	2
22	00-418907-00003	Caster.....	2
23	00-499487-000G8	Door Assy. (RH) (HG65/85MF).....	1
24	00-499487-000G4	Door Assy. (RH) (HG45MF).....	1
25	00-419653	Handle.....	2
26	RS-033-09	Rivet – Pop (0.187).....	4
27	00-499487-000G7	Door Assy. (LH) (HG65/85MF).....	1
28	00-499487-000G3	Door Assy. (LH) (HG45MF).....	1
29	00-428116-000G3	Frame – Front Assy. (HG45MF) (2 Unit).....	1
30	00-428116-000G4	Frame – Front Assy. (HG65/85MF) (2 Unit).....	1
31	00-428116-000G5	Frame – Front Assy. (HG45MF) (3 Unit).....	1
32	00-428116-000G6	Frame – Front Assy. (HG65/85MF) (3 Unit).....	1
33	00-428116-000G7	Frame – Front Assy. (HG45MF) (4 Unit).....	1
34	00-427152-00001	Nameplate (Hobart).....	1
35	00-418379-000G1	Heat Shield (HG45MF).....	1
36	00-418324-000G1	Heat Shield (HG65/85MF).....	1
37	00-419777-00004	Body – RH Side (SST) (HG85MF).....	1
38	00-417711-00002	Body – RH Side (SST) (HG45/65MF).....	1
39	00-419648-00002	Body – RH Side (SST) (HG45/65MF).....	1
40	SD-036-03	Self-Tapping Screw 8-18 x 3/8 Hex Washer Hd., Type AB.....	AR

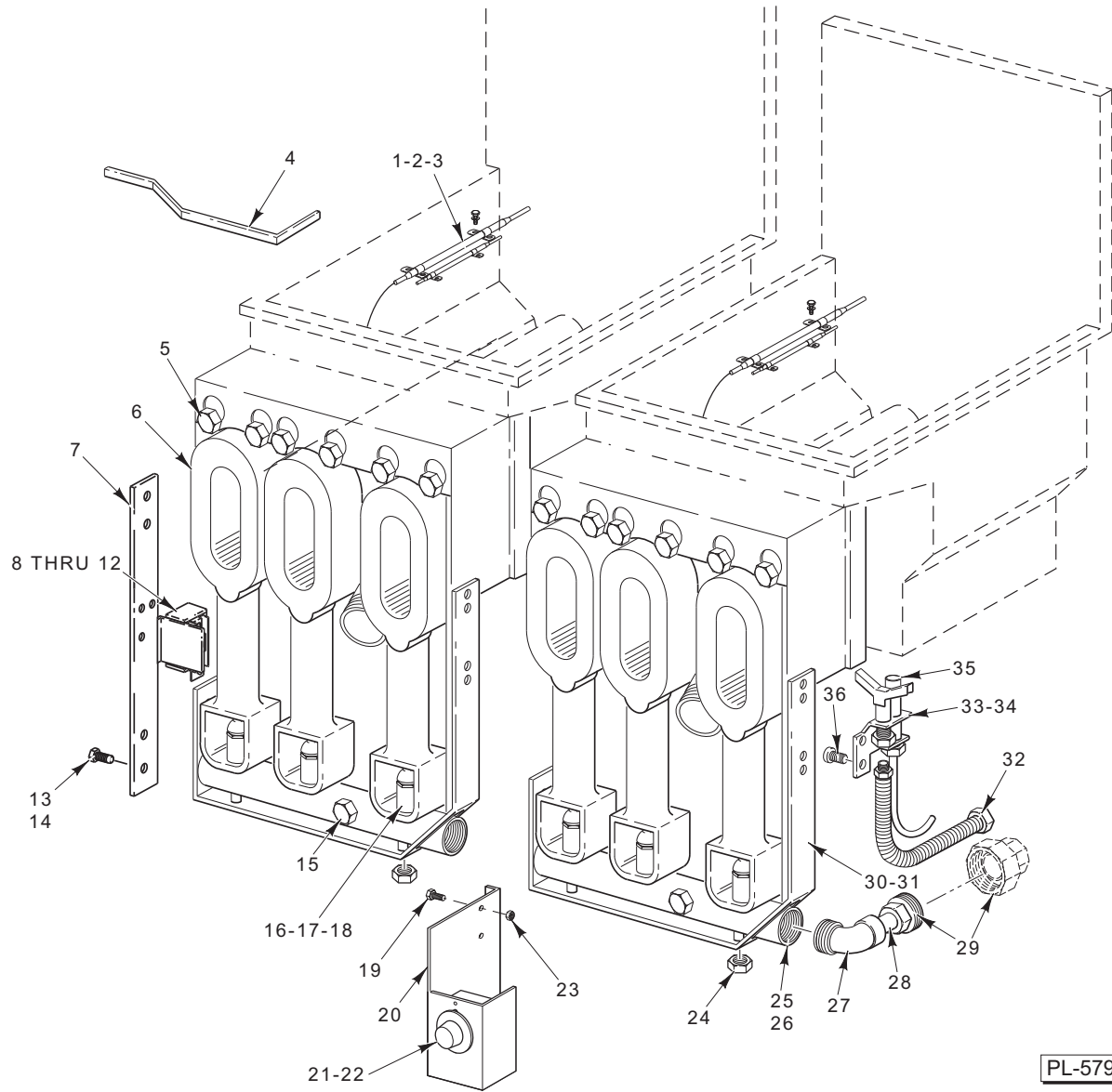


PL-57903

**BURNER COMPONENTS (HGCF & HGDF SERIES)**

**BURNER COMPONENTS (HGCF & HGDF SERIES)**

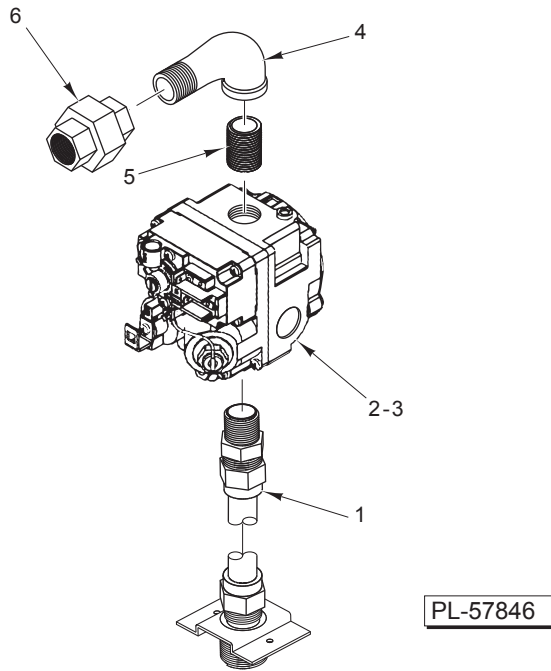
ILLUS. PL-57903	PART NO.	NAME OF PART	AMT.
1	00-417522-00001	Clip – Capillary.....	2
2	SD-035-02	Self-Tapping Screw 8-18 x 3/8 Hex Washer Hd., Type AB.....	4
3	00-409300-00005	Rod – Clean-Out.....	1
4	00-428035-00001	Bolt – Shoulder.....	AR
5	00-410681-00001	Burner.....	AR
6	00-417714-00001	Extension – Hanger.....	1
7	00-419548	Bracket – Hi-Limit.....	1
8	SD-037-70	Self-Tapping Screw 1/4-20 x 1/2 Hex Washer Hd., Type AB.....	4
9	NS-046-52	Nut – 1/4-20 Hex KEPS.....	4
10	SD-036-80	Self-Tapping Screw 8-32 x 3/8 Hex Washer Hd., Type TT.....	2
11	00-410840-00002	Box – Control With Stuffing.....	1
12	SD-015-24	Self-Tapping Screw 1/4-20 x 1/2 Hex Washer Hd., Type TT.....	AR
13	NS-044-14	Nut – 1/4-20 Hex KEPS.....	AR
14	FP-085-53	Pipe Plug 1/8.....	1
15	00-010901-00039	Orifice – Spud (NAT Gas) (Sea Level – 2000 Ft.).....	AR
16	00-010901-00052	Orifice – Spud (LP Gas) (Sea Level – 3499 Ft.).....	AR
17	00-410695-00001	Extension – Orifice.....	AR
18	NS-047-72	Lock Nut 1/4-20.....	2
19	00-418212-00001	Manifold – Burner (4 Tube).....	1
20	00-418318-00001	Manifold – Burner (5 Tube).....	1
21	FP-086-74	Elbow – Pipe 1/2 x 90 Deg.....	1
22	FP-035-94	Pipe 1/2 x 1 1/2 Lg. TBE.....	1
23	FP-022-11	Union – Pipe.....	AR
24	00-418211-00001	Hanger – Manifold (4 Tube).....	1
25	00-418317-00001	Hanger – Manifold (5 Tube).....	1
26	00-426505-00023	Tube – Flex 1/4 O.D. x 23 In. Lg. ....	1
27	00-419316-00001	Pilot (NAT Gas) (With Electronic Ignition).....	1
28	00-419316-00002	Pilot (LP Gas) (With Electronic Ignition).....	1
29	00-419359	Cable – Ignitor Wire (36 In.).....	2
30	SC-018-32	Mach. Screw 8-32 x 3/8 Pan Hd.....	2
	00-403965-00008	Spacer.....	2



**BURNER COMPONENTS (HGMF SERIES)**

**BURNER COMPONENTS (HGMF SERIES)**

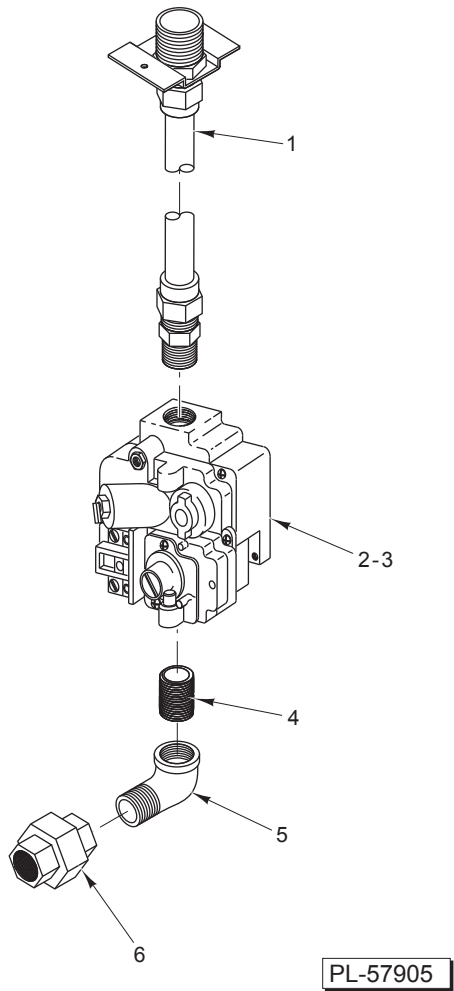
ILLUS. PL-57904	PART NO.	NAME OF PART	AMT.
1	00-402558-00006	Clip – Tubing.....	2
2	00-417522-00001	Clip – Capillary.....	2
3	SD-035-02	Self-Tapping Screw 8-18 x 3/8 Hex Washer Hd., Type AB.....	4
4	00-409300-00005	Rod – Clean-Out.....	1
5	SC-062-07	Cap Screw 5/16-18 x 1/2 Hex Hd. ....	AR
6	00-410681-00001	Burner .....	AR
7	00-417714-00001	Extension – Hanger .....	1
8	00-419548	Bracket – Hi-Limit .....	1
9	SD-037-70	Self-Tapping Screw 1/4-20 x 1/2 Hex Washer Hd., Type AB.....	4
10	NS-046-52	Nut – 1/4-20 Hex KEPS.....	4
11	SD-036-80	Self-Tapping Screw 8-32 x 3/8 Hex Washer Hd., Type TT .....	2
12	00-410840-00002	Box – Control With Stuffing.....	1
13	SD-015-24	Self-Tapping Screw 1/4-20 x 1/2 Hex Washer Hd., Type TT.....	AR
14	NS-044-14	Nut – 1/4-20 Hex KEPS.....	AR
15	FP-085-53	Pipe Plug 1/8 .....	1
16	00-010901-00039	Orifice – Spud (NAT Gas) (Sea Level – 2000 Ft.).....	AR
17	00-010901-00052	Orifice – Spud (LP Gas) (Sea Level – 3499 Ft.).....	AR
18	00-410695-00001	Extension – Orifice.....	AR
19	SD-037-70	Self-Tapping Screw 1/4-20 x 1/2 Hex Washer Hd., Type TT.....	2
20	00-497089-00001	Bracket – Control .....	1
21	00-408659-00005	Knob – Thermostat .....	1
22	00-411506-00013	Thermostat.....	1
23	NS-046-52	Nut 1/4-20 Hex .....	2
24	NS-047-72	Lock Nut 1/4-20 .....	2
25	00-418212-00001	Manifold – Burner (HG45MF) .....	1
26	00-418318-00001	Manifold – Burner (HG65/85MF) .....	1
27	FP-086-74	Elbow – Pipe 1/2 x 90 Deg. ....	1
28	FP-035-94	Pipe 1/2 x 1 1/2 Lg. TBE.....	1
29	FP-022-11	Union – Pipe .....	AR
30	00-418211-00001	Hanger – Manifold (HG45MF) .....	1
31	00-418317-00001	Hanger – Manifold (HG65/85MF) .....	1
32	00-426505-00023	Tube – Flex 1/4 O.D. x 23 In. Lg. ....	1
33	00-412212-00007	Pilot (NAT Gas).....	1
34	00-412212-00002	Pilot (LP Gas).....	1
35	00-410839-00004	Thermopile (750 MV).....	2
36	SC-018-32	Mach. Screw 8-32 x 3/8 Pan Hd.....	2



**GAS INLET MANIFOLD (HGCF & HGDF SERIES)**

**GAS INLET MANIFOLD (HGCF & HGDF SERIES)**

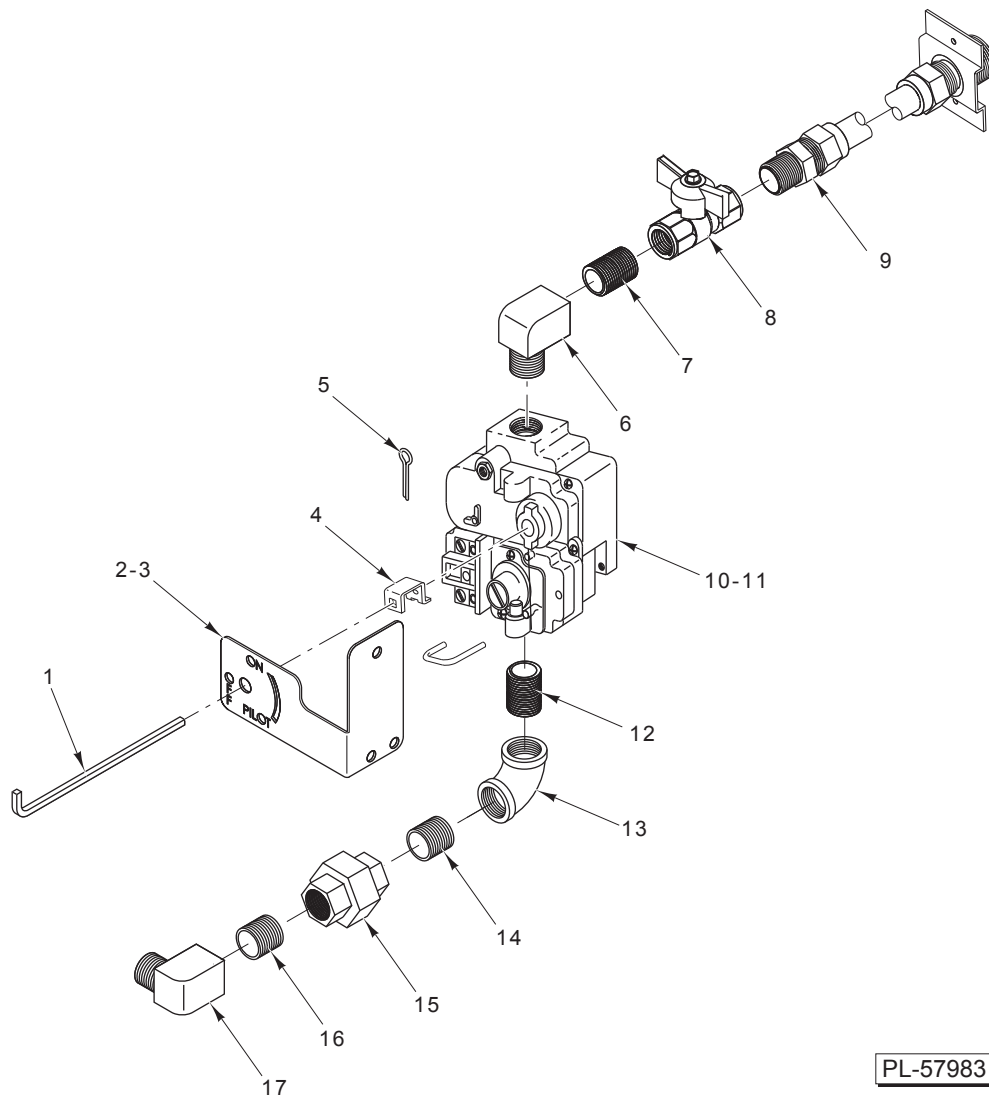
ILLUS.	PART NO.	NAME OF PART	AMT.
PL-57846			
1	00-427882-000G3	Gas Inlet (HG45/65/85CF & HG45/65/85DF) .....	1
2	00-410841-00028	Valve – Combination (NAT) (Electronic Ignition).....	1
3	00-410841-00029	Valve – Combination (LP) (Electronic Ignition) .....	1
4	FP-013-17	Elbow – Pipe 1/2 x 90 Deg. ....	1
5	FP-035-95	Pipe 1/2 x 2 TBE.....	1
6	FP-022-11	Union – Pipe .....	1



**GAS INLET MANIFOLD (HGMF SERIES)  
(CURRENT CONSTRUCTION)**

ILLUS. PL-57905	PART NO.	NAME OF PART	AMT.
1	00-427882-000G3	Gas Inlet (HG45/65/85MF) .....	1
2	00-410841-00022	Valve – Combination (NAT) (Manual Ignition).....	1
3	00-410841-00023	Valve – Combination (LP) (Manual Ignition) .....	1
4	FP-035-95	Pipe 1/2 x 2 TBE.....	1
5	FP-013-17	Elbow – Pipe 1/2 x 90 Deg. ....	1
6	FP-022-11	Union – Pipe .....	1

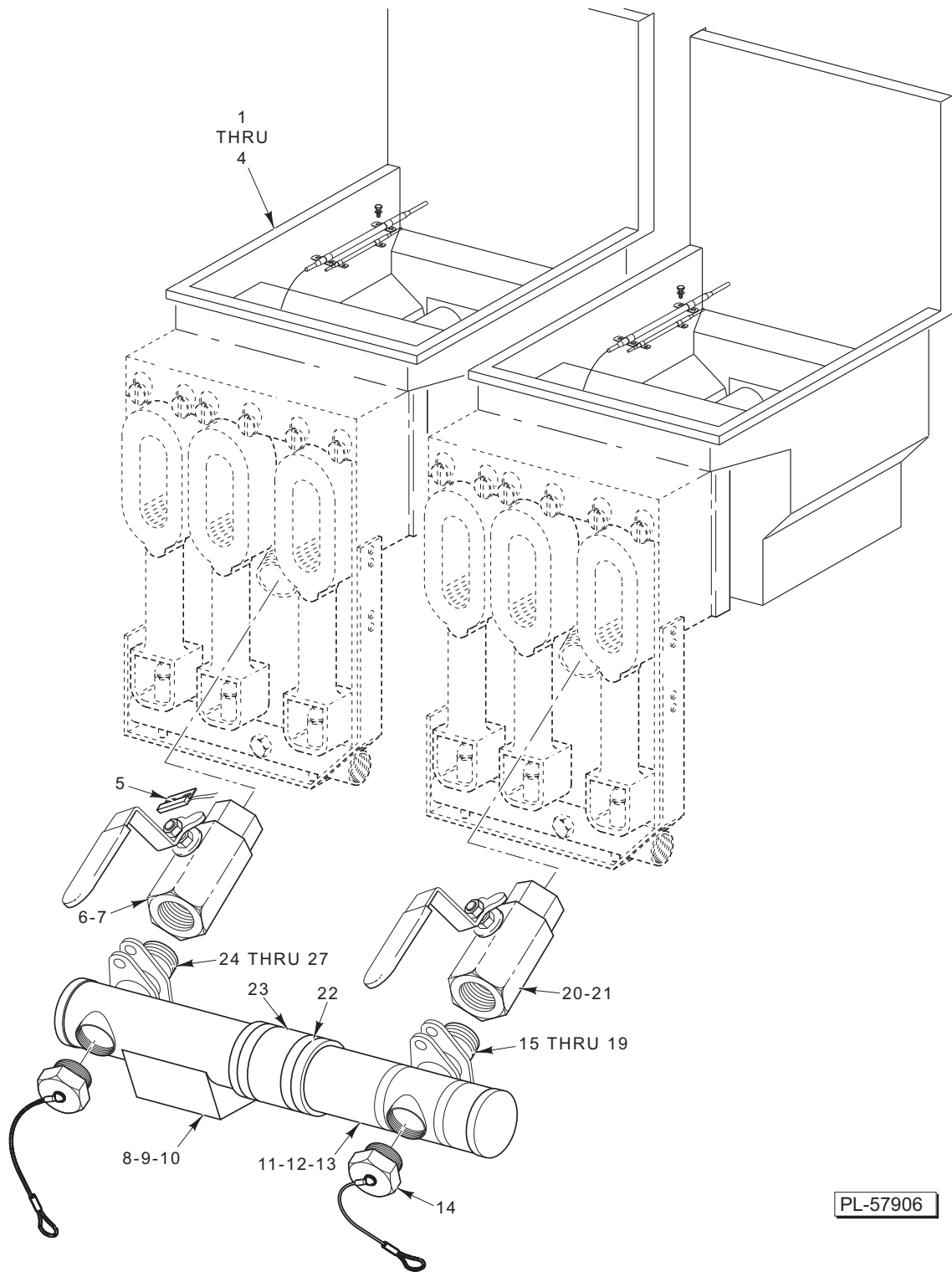




PL-57983

**GAS INLET MANIFOLD (HGMF SERIES)  
(PREVIOUS CONSTRUCTION)**

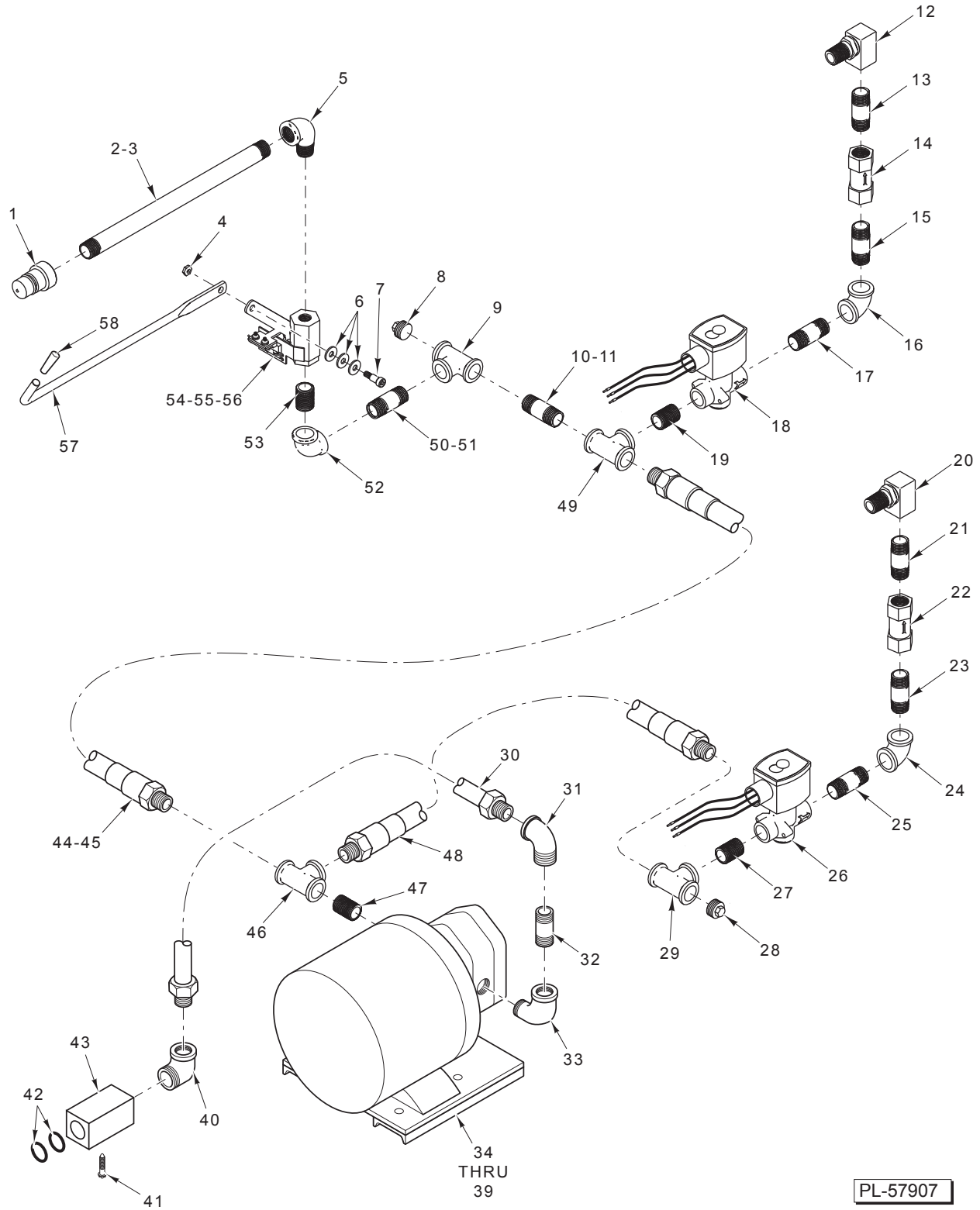
ILLUS.	PART NO.	NAME OF PART	AMT.
	PL-57983		
1	00-413433-00006	Lever – Valve .....	1
2	00-417896-00001	Plate – Control Valve .....	1
3	00-428755-00002	Bracket – Pilot Lever.....	1
4	00-412080-00001	Adapter – Knob (Use Existing Screw Provided With Knob).....	1
5	PC-003-38	Pin – Cotter.....	1
6	FP-086-74	Elbow – Street 1/2 x 90 Deg. (Brass).....	1
7	FP-035-91	Pipe 1/2 x 1 1/8 TBE.....	1
8	00-428472-00001	Valve – Ball .....	1
9	00-427882-000G3	Gas Inlet (HG45/65/85MF) .....	1
10	00-410841-00022	Valve – Combination (NAT) (Manual Ignition).....	1
11	00-410841-00023	Valve – Combination (LP) (Manual Ignition) .....	1
12	FP-035-95	Pipe 1/2 x 2 TBE.....	1
13	FP-077-68	Elbow – Pipe 1/2 x 90 Deg. ....	1
14	FP-035-94	Pipe 1/2 x 1 TBE.....	1
15	FP-022-11	Union – Pipe .....	1
16	FP-035-91	Pipe 1/2 x 1 1/8 TBE.....	1
17	FP-086-74	Elbow – Street 1/2 x 90 Deg. (Brass).....	1



**TANK AND DRAIN**

**TANK AND DRAIN**

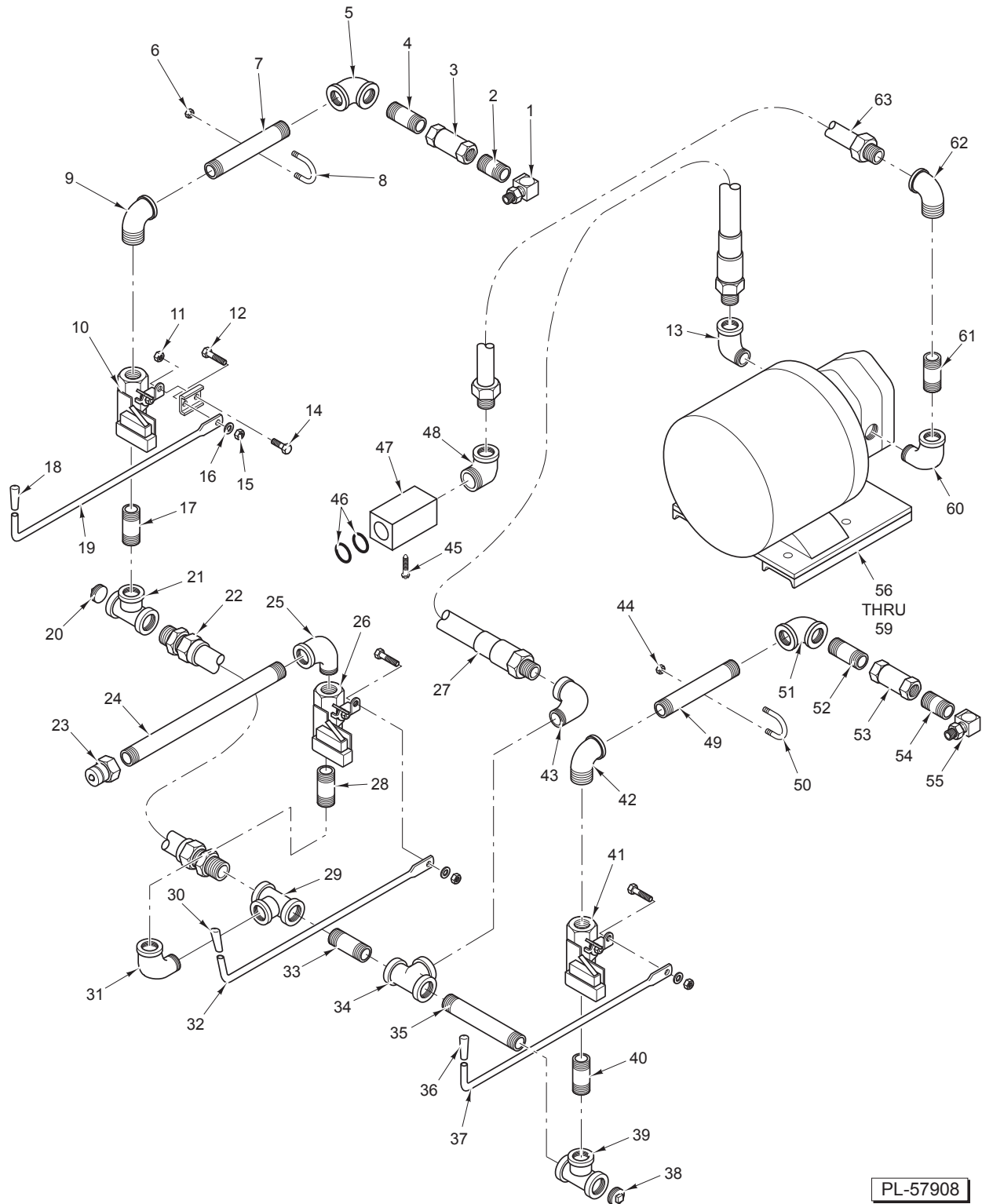
ILLUS.	PART NO.	NAME OF PART	AMT.
PL-57906			
1	00-499701-000G2	Tank Assy. (SST) (HG45 & HG85 Series).....	1
2	00-499702-000G2	Tank Assy. (SST) (HG65MF Series) .....	1
3	00-499702-000G2	Tank Assy. (SST) (2HG65DF, 2HG65CF, 3HG65DF, & 3HG65CF).....	1
4	00-499703-000G2	Tank – Fry (2HG85DF/CF).....	1
5	00-426805-000G1	Switch Assy. (Drain Valve Interlock) (HGCF & HGDF Series).....	1
6	00-426803-000G2	Valve – Ball (1 <sup>1</sup> / <sub>4</sub> In.).....	1
7	00-414212-00006	Valve – Ball (1 <sup>1</sup> / <sub>4</sub> In.) (45 Lbs.) .....	1
8	00-497567-000G1	Pipe – Drain (LH) With Spout .....	1
9	00-497567-000G2	Pipe – Drain (LH) With Spout (65/85 Lbs.) .....	1
10	00-497569-000G1	Pipe – Drain (Center) With Spout (45 Lbs.).....	1
11	00-497566-000G1	Pipe – Drain (End) (45 Lbs.).....	1
12	00-497566-000G3	Pipe – Drain (RH) (65/85 Lbs.) .....	1
13	00-497566-000G2	Pipe – End Section (LH) (5 Tube).....	1
14	00-497571-000G1	Plug – Drain .....	2
15	00-420726-00001	Flange – Pipe (1 <sup>1</sup> / <sub>4</sub> In.) .....	1
16	00-420553-00002	Gasket – Silicone.....	1
17	FP-085-96	Pipe 1 x 1 TBE .....	1
18	FP-087-96	Pipe 1 <sup>1</sup> / <sub>4</sub> x 1 <sup>3</sup> / <sub>8</sub> TBE.....	1
19	SC-036-13	Cap Screw <sup>1</sup> / <sub>4</sub> -20 x <sup>3</sup> / <sub>4</sub> Hex Hd.....	2
20	00-414212-00006	Valve – Ball (1 <sup>1</sup> / <sub>4</sub> In.) (HG85MF).....	1
21	00-426803-000G2	Valve – Ball (1 <sup>1</sup> / <sub>4</sub> In.) (HG85CF & HG85DF) .....	1
22	00-497409-00001	Clamp – Drain Tube.....	AR
23	00-419351-00001	Hose – Connect .....	AR
24	00-420553-00002	Gasket – Silicone.....	1
25	00-420726-00001	Flange – Pipe (1 <sup>1</sup> / <sub>4</sub> In.) .....	1
26	FP-087-96	Pipe 1 <sup>1</sup> / <sub>4</sub> x 1 <sup>3</sup> / <sub>8</sub> TBE.....	1
27	SC-036-13	Cap Screw <sup>1</sup> / <sub>4</sub> -20 x <sup>3</sup> / <sub>4</sub> Hex Hd.....	2



**OIL RETURN (HGCF & HGDF SERIES)**

**OIL RETURN (HGCF & HGDF SERIES)**

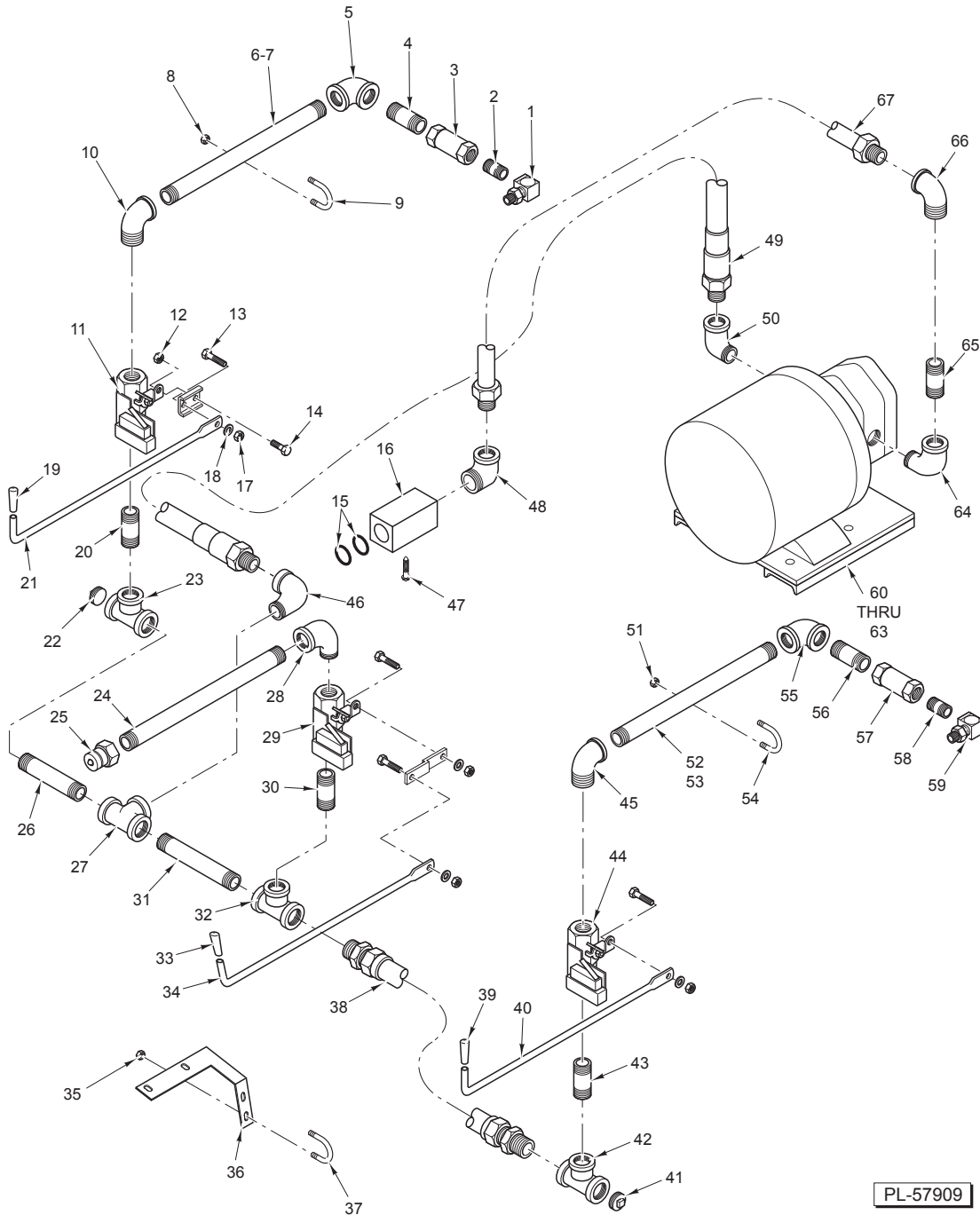
ILLUS.	PART NO.	NAME OF PART	AMT.
	PL-57907		
1	00-418781-00001	Quick Disconnect.....	1
2	FP-080-44	Pipe 1/2 x 12 TBE (HG45/65CF & HG45/65DF) .....	1
3	FP-080-92	Pipe 1/2 x 16 TBE (HG85CF & HG85DF) .....	1
4	NS-046-52	Nut Assy. 1/4-20 Hex KEPS .....	1
5	FP-013-17	Elbow – Street 1/2 x 90 Deg.....	1
6	WS-005-06	Washer.....	3
7	SC-113-34	Shoulder Screw 1/4-20 x 1/2 Hex Socket Hd.....	1
8	FP-028-14	Pipe – Plug 1/2 Sq. Hd. ....	1
9	FP-019-25	Tee 1/2 x 1/2 x 1/2 .....	1
10	FP-035-95	Pipe 1/2 x 2 TBE (HG45CF & HG45DF) .....	1
11	FP-059-85	Pipe 1/2 x 4 3/4 TBE (HG65/85CF & HG65/85DF) .....	1
12	00-419251-00001	Elbow – Swivel 1/2 NPTF .....	1
13	FP-035-95	Pipe 1/2 x 2 TBE.....	1
14	00-418786-00001	Check Valve.....	1
15	FP-035-95	Pipe 1/2 x 2 TBE.....	1
16	FP-077-68	Elbow – Pipe 1/2 x 90 Deg. ....	1
17	FP-035-95	Pipe 1/2 x 2 TBE.....	1
18	00-428691-00002	Valve – Solenoid .....	1
19	FP-035-91	Pipe 1/2 x 1 1/8 TBE.....	1
20	00-419251-00001	Elbow - Swivel 1/2 NPTF.....	1
21	FP-035-95	Pipe 1/2 x 2 TBE.....	1
22	00-418786-00001	Check Valve.....	1
23	FP-035-95	Pipe 1/2 x 2 TBE.....	1
24	FP-077-68	Elbow – Pipe 1/2 x 90 Deg. ....	1
25	FP-035-95	Pipe 1/2 x 2 TBE.....	1
26	00-428691-00002	Valve – Solenoid .....	1
27	FP-035-91	Pipe 1/2 x 1 1/8 TBE.....	1
28	FP-028-14	Pipe – Plug 1/2 Sq. Hd. ....	1
29	FP-019-25	Tee 1/2 x 1/2 x 1/2 .....	1
30	00-426602-00004	Tube – Flex (29 In.).....	1
31	FP-077-68	Elbow – Pipe 1/2 x 90 Deg. ....	1
32	FP-035-94	Pipe 1/2 x 1 1/2 TBE.....	1
33	FP-077-68	Elbow – Pipe 1/2 x 90 Deg. ....	1
34	00-417792-00001	Pump Motor Assy. (120 V., 60 Hz.) (Units Built Before 1/02/07).....	1
35	00-417792-00003	Pump Motor Assy. (208 V., 50/60 Hz.) (Units Built Before 1/02/07).....	1
36	00-417792-00004	Pump Motor Assy. (230 V., 50/60 Hz.) (Units Built Before 1/02/07).....	1
37	00-417792-00005	Pump Motor Assy (115 V., 50/60 Hz.) (Units Built On Or After 1/02/07) .....	1
38	00-417792-00006	Pump Motor Assy. (208 V., 50/60 Hz.) (Units Built On Or After 1/02/07) .....	1
39	00-417792-00007	Pump Motor Assy. (230 V., 50/60 HZ.) (Units Built On Or After 1/02/07).....	1
40	FP-013-17	Elbow – Street 1/2 x 90 Deg.....	1
41	SC-114-01	Mach. Screw 10-32 x 3/8 Hex Washer Hd. ....	1
42	00-426567-00002	O-Ring (Viton).....	2
43	00-426567-00003	Receptacle – Oil Suction .....	1
44	00-426602-00001	Tube – Flex (12 In.).....	1
45	00-426602-00004	Tube – Flex (19 In.).....	1
46	FP-019-25	Tee 1/2 x 1/2 x 1/2 .....	1
47	FP-035-91	Pipe 1/2 x 1 1/8 TBE.....	1
48	00-426602-00004	Tube – Flex (19 In.).....	1
49	FP-019-25	Tee 1/2 x 1/2 x 1/2 .....	1
50	FP-035-94	Pipe 1/2 x 1 1/2 TBE (HG45/65CF & HG45/65DF) .....	1
51	FP-035-95	Pipe 1/2 x 2 TBE (HG85CF & HG85DF) .....	1
52	FP-077-68	Elbow – Pipe 1/2 x 90 Deg. ....	1
53	FP-035-95	Pipe 1/2 x 2 TBE (HG45/65/85CF & HG45/65/85DF) .....	1
54	00-428694-000G1	Valve Assy. ....	1
55	00-426801-00002	Switch – Magnetic.....	1
56	00-426805-000G2	Switch – Magnetic (Wired).....	1
57	00-428693-00004	Rod – Pull .....	1
58	00-416435-00002	Grip (Yellow) .....	1



**OIL RETURN (HG45MF)**

OIL RETURN (HG45MF)

ILLUS.	PART NO.	NAME OF PART	AMT.
PL-57908			
1	00-419251-00001	Fitting – 90 Deg. Swivel.....	1
2	FP-035-91	Pipe 1/2 x 1 1/8 TBE.....	1
3	00-418786-00001	Valve – Check.....	1
4	FP-035-94	Pipe 1/2 x 1 1/2 TBE.....	1
5	FP-077-68	Elbow 1/2 x 90 Deg. ....	1
6	NS-046-52	Nut Assy. 1/4-20 Hex.....	2
7	FP-058-49	Pipe 1/2 x 3 1/2 TBE .....	1
8	00-521820	U-Bolt.....	1
9	FP-013-17	Elbow – Street 1/2 x 90 Deg.....	1
10	00-419291-000G1	Valve Assy.....	1
11	NS-044-14	Nut Assy. 1/4-20 Hex KEPS .....	1
12	SC-113-34	Shoulder Screw 1/4-20 x 1/2 Hex Socket Hd.....	3
13	FP-013-17	Elbow – Street 1/2 x 90 Deg.....	1
14	SC-110-12	Cap Screw 1/4-20 x 5/8 Hex Hd.....	1
15	NS-044-14	Nut Assy. 1/4-20 Hex KEPS .....	3
16	WS-005-06	Washer.....	9
17	FP-035-94	Pipe 1/2 x 1 1/2 TBE.....	1
18	00-416435-00001	Grip (Red).....	1
19	00-428693-00004	Rod – Refill .....	1
20	FP-028-14	Pipe – Plug 1/2 Sq. Hd. ....	1
21	FP-019-25	Tee 1/2 x 1/2 x 1/2 .....	1
22	00-426602-00001	Tube – Flex (12 In.).....	1
23	00-418781-00001	Quick Disconnect.....	1
24	FP-080-43	Pipe 1/2 x 15 .....	1
25	FP-013-17	Elbow – Street 1/2 x 90 Deg.....	1
26	00-419291-000G1	Valve Assy.....	1
27	00-426602-00001	Tube Flex (12 In.).....	1
28	FP-035-94	Pipe 1/2 x 1 1/2 TBE.....	1
29	FP-019-25	Tee 1/2 x 1/2 x 1/2 .....	1
30	00-416435-00002	Grip (Yellow) .....	1
31	FP-013-17	Elbow – Street 1/2 x 90 Deg.....	1
32	00-428693-00004	Rod – Discard.....	1
33	FP-035-94	Pipe 1/2 x 1 1/2 TBE.....	1
34	FP-019-25	Tee 1/2 x 1/2 x 1/2 .....	1
35	FP-035-95	Pipe 1/2 x 2 TBE.....	1
36	00-416435-00001	Grip (Red).....	1
37	00-428693-00004	Rod – Refill .....	1
38	FP-028-14	Pipe – Plug 1/2 Sq. Hd. ....	1
39	FP-019-25	Tee 1/2 x 1/2 x 1/2 .....	1
40	FP-035-94	Pipe 1/2 x 1 1/2 TBE.....	1
41	00-419291-000G1	Valve Assy.....	1
42	FP-013-17	Elbow – Street 1/2 x 90 Deg.....	1
43	FP-013-17	Elbow – Street 1/2 x 90 Deg.....	1
44	NS-046-52	Nut Assy. 1/4-20 Hex.....	2
45	SC-114-01	Mach. Screw 10-32 x 3/8 Hex Washer Hd. ....	1
46	00-426567-00002	O-Ring (Viton).....	2
47	00-426567-00003	Receptacle – Oil Suction .....	1
48	FP-013-17	Elbow – Street 1/2 x 90 Deg.....	1
49	FP-058-49	Pipe 1/2 x 3 1/2 .....	1
50	00-521820	U-Bolt.....	1
51	FP-077-68	Elbow 1/2 x 90 Deg. ....	1
52	FP-035-94	Pipe 1/2 x 1 1/2 TBE.....	1
53	00-418786-00001	Valve – Check.....	1
54	FP-035-91	Pipe 1/2 x 1 1/8 TBE .....	1
55	00-419251-00001	Fitting – 90 Deg. Swivel.....	1
56	00-417792-00001	Pump Motor Assy. (120 V., 60 Hz.) (Units Built Before 1/02/07).....	1
57	00-417792-00003	Pump Motor Assy. (208 V., 50/60 Hz.).....	1
58	00-417792-00004	Pump Motor Assy. (230 V., 50/60 Hz.).....	1
59	00-417792-00005	Pump Motor Assy. (115 V., 60 Hz.) (Units Built On Or After 1/02/07).....	1
60	FP-077-68	Elbow 1/2 x 90 Deg. ....	1
61	FP-035-94	Pipe 1/2 x 1 1/2 TBE.....	1
62	FP-077-68	Elbow 1/2 x 90 Deg. ....	1
63	00-426602-00002	Tube – Suction Flex (19 In.).....	1
	00-411496-000F7	Micro Switch (Included With Items 10, 26, & 41).....	1



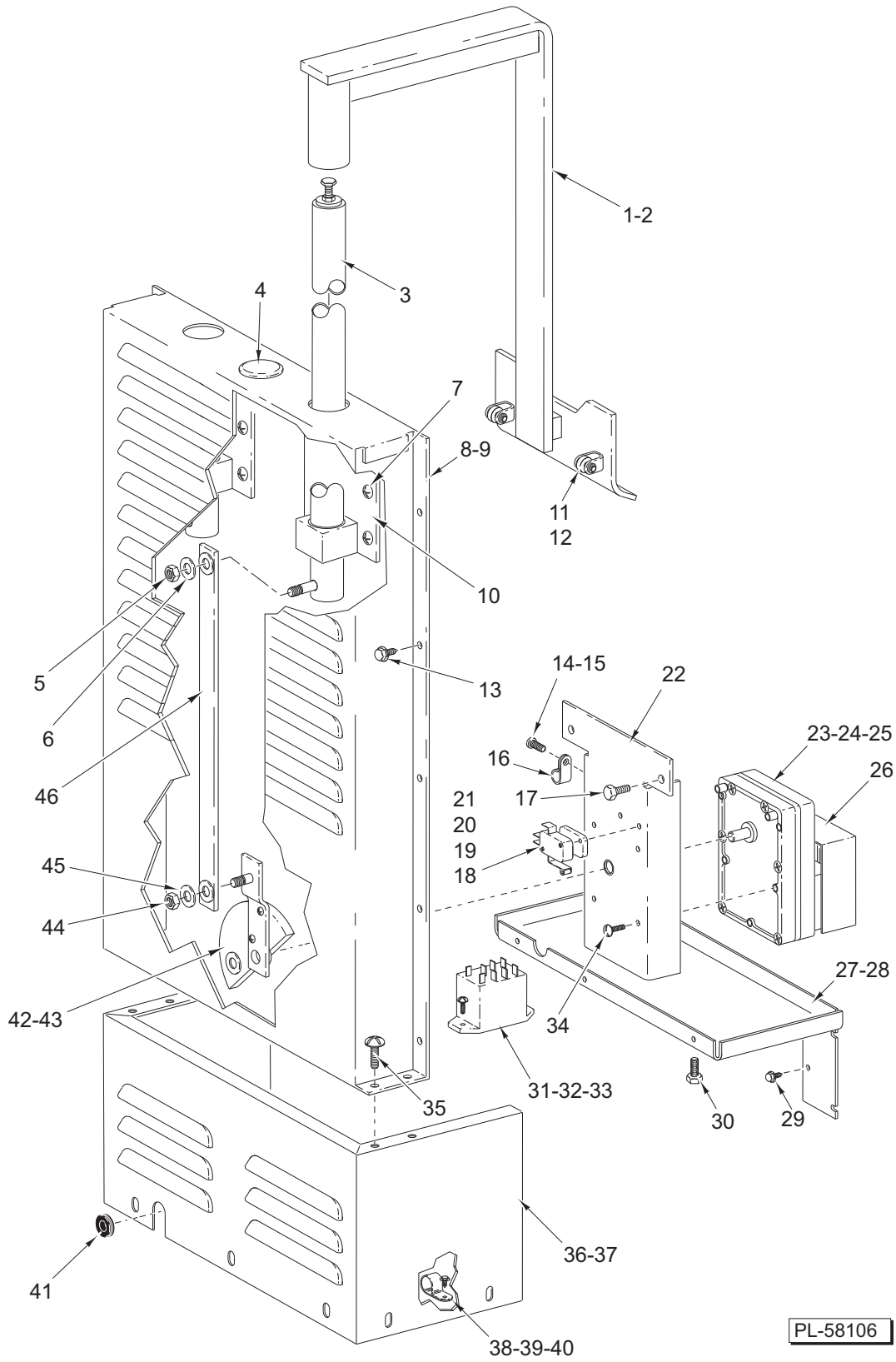
**OIL RETURN (HG65MF & HG85MF)**

ILLUS.	PART NO.	NAME OF PART	AMT.
	PL-57909		
1	00-419251-00001	Fitting – 90 Deg. Swivel .....	1
2	FP-086-28	Pipe 1/2 x 7/8 TBE .....	1
3	00-418786-00001	Valve – Check .....	1
4	FP-086-29	Pipe 1/2 x 4 1/2 TBE .....	1
5	FP-077-68	Elbow 1/2 x 90 Deg. ....	1
6	FP-059-86	Pipe 1/2 x 7 7/8 TBE (HG65MF) .....	1
7	FP-058-49	Pipe 1/2 x 3 1/2 TBE (HG85MF) .....	1
8	NS-046-52	Nut Assy. 1/4-20 Hex .....	2
9	00-521820	U-Bolt .....	1



OIL RETURN (HG65MF & HG85MF)

ILLUS. PL-57909	PART NO.	NAME OF PART	AMT.
10	FP-013-17	Elbow – Street 1/2 x 90 Deg.....	1
11	00-419291-000G1	Valve Assy.....	1
12	NS-044-14	Nut Assy. 1/4-20 Hex KEPS .....	1
13	SC-113-34	Shoulder Screw 1/4-20 x 1/2 Hex Socket Hd.....	4
14	SC-110-12	Cap Screw 1/4-20 x 5/8 Hex Hd.....	1
15	00-426567-00002	O-Ring (Viton).....	2
16	00-426567-00003	Receptacle – Oil Suction .....	1
17	NS-044-14	Nut Assy. 1/4-20 Hex KEPS .....	4
18	WS-005-06	Washer.....	12
19	00-416435-00001	Grip (Red).....	1
20	FP-035-94	Pipe 1/2 x 1 1/2 TBE.....	1
21	00-428693-00004	Rod – Refill .....	1
22	FP-028-14	Pipe – Plug 1/2 Sq. Hd.....	1
23	FP-019-25	Tee 1/2 x 1/2 x 1/2 .....	1
24	FP-080-92	Pipe 1/2 x 16 .....	1
25	00-418781-00001	Quick Disconnect.....	1
26	FP-086-29	Pipe 1/2 x 4 1/2 TBE .....	1
27	FP-019-25	Tee 1/2 x 1/2 x 1/2 .....	1
28	FP-013-17	Elbow 1/2 x 90 Deg.....	1
29	00-419291-000G1	Valve Assy.....	1
30	FP-035-94	Pipe 1/2 x 1 1/2 TBE.....	1
31	FP-058-51	Pipe 1/2 x 5 TBE.....	1
32	FP-019-25	Tee 1/2 x 1/2 x 1/2 .....	1
33	00-416435-00002	Grip (Yellow) .....	1
34	00-428693-00004	Rod – Pull .....	1
35	NS-046-52	Nut Assy. 1/4-20 Hex.....	2
36	00-497087-00001	Bracket – Quick Disconnect.....	1
37	00-521820	U-Bolt.....	1
38	00-426602-00001	Tube – Flex (12 In.).....	1
39	00-416435-00001	Grip (Red).....	1
40	00-428693-00004	Rod – Pull .....	1
41	FP-028-14	Pipe – Plug 1/2 Sq. Hd.....	1
42	FP-019-25	Tee 1/2 x 1/2 x 1/2 .....	1
43	FP-035-94	Pipe 1/2 x 1 1/2 TBE.....	1
44	00-419291-000G1	Valve Assy.....	1
45	FP-013-17	Elbow – Street 1/2 x 90 Deg.....	1
46	FP-013-17	Elbow – Street 1/2 x 90 Deg.....	1
47	SC-114-01	Mach. Screw 10-32 x 3/8 Hex Washer Hd.....	1
48	FP-013-17	Elbow – Street 1/2 x 90 Deg.....	1
49	00-426602-00001	Tube – Flex (12 In.).....	1
50	FP-083-73	Elbow – Street 1/2 x 90 Deg. (Brass).....	1
51	NS-046-52	Nut Assy. 1/4-20 Hex.....	2
52	FP-059-86	Pipe 1/2 x 7 5/8 TBE (HG65MF).....	1
53	FP-058-49	Pipe 1/2 x 3 1/2 TBE (HG85MF).....	1
54	00-521820	U-Bolt.....	1
55	FP-077-68	Elbow 1/2 x 90 Deg.....	1
56	FP-086-29	Pipe 1/2 x 4 1/2 TBE .....	1
57	00-418786-00001	Valve – Check.....	1
58	FP-035-94	Pipe 1/2 x 1 1/8 TBE .....	1
59	00-419251-00001	Fitting – 90 Deg. Swivel.....	1
60	00-417792-00001	Pump Motor Assy. (120 V., 60 Hz.) (Units Built Before 1/02/07).....	1
61	00-417792-00003	Pump Motor Assy. (208 V., 50/60 Hz.).....	1
62	00-417792-00004	Pump Motor Assy. (230 V., 50/60 Hz.).....	1
63	00-417792-00005	Pump Motor Assy. (115 V., 60 HZ.) (Units Built On Or After 1/02/07).....	1
64	FP-077-68	Elbow 1/2 x 90 Deg.....	1
65	FP-035-94	Pipe 1/2 x 1 1/2 TBE.....	1
66	FP-077-68	Elbow 1/2 x 90 Deg.....	1
67	00-426602-00004	Tube – Suction Flex (29 In.).....	1
	00-411496-000F7	Micro Switch (Included With Items 11, 29, & 44).....	1



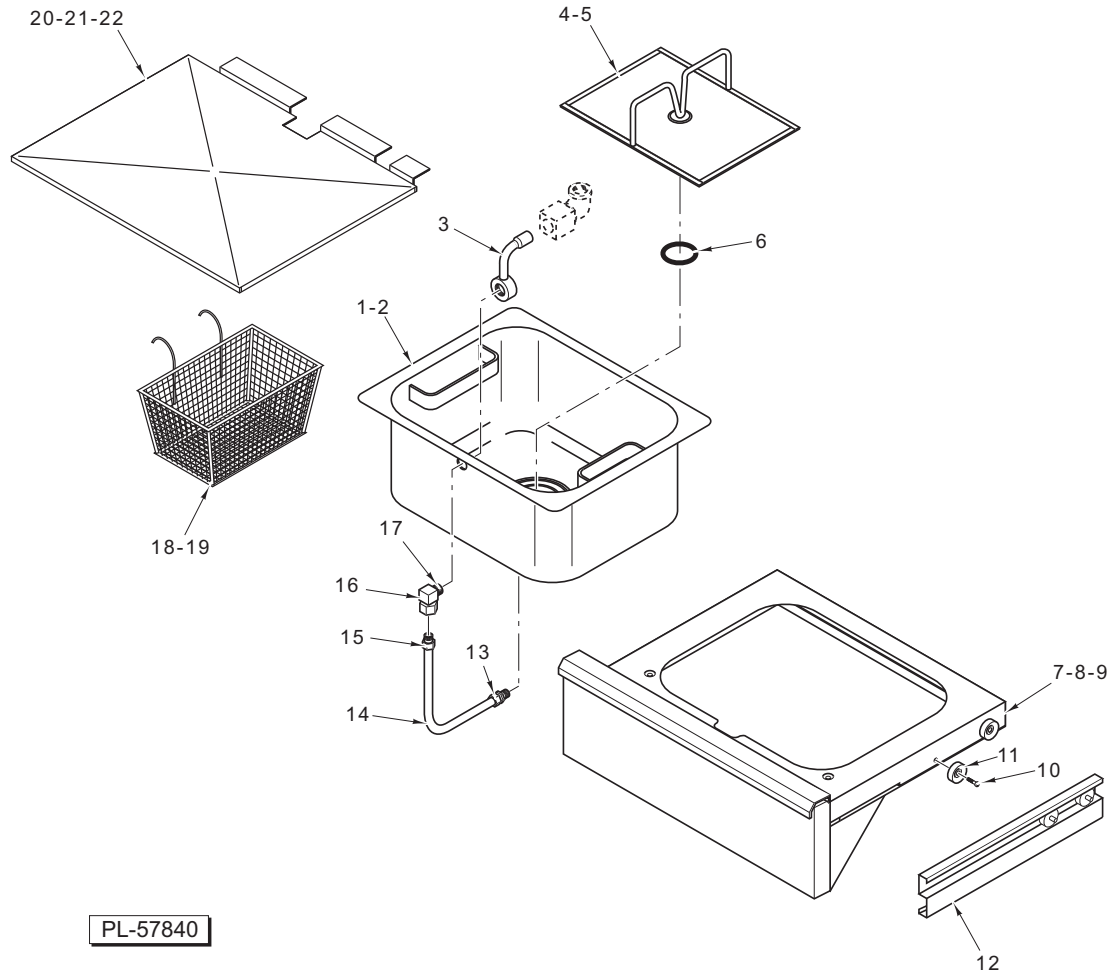
**BASKETLIFT COMPONENTS  
(HGDF & HGCF SERIES)**

PL-58106

**BASKETLIFT COMPONENTS  
(HGDF & HGCF SERIES)**

ILLUS.	PART NO.	NAME OF PART	AMT.
	PL-58106		
1	00-426006-000G2	Arm – Basket Assy. (Single Unit) (85 Lbs.).....	1
2	00-418486-000G1	Arm – Basket Assy. (Incls. Items 11 & 12) (Double).....	2
3	00-418503-00001	Tube – Basketlift.....	1
4	PB-004-04	Plug Button 1 <sup>1</sup> / <sub>4</sub> (Single Unit).....	2
*5	NS-047-73	Lock Nut 5 <sup>5</sup> / <sub>16</sub> -18 Hex.....	1
*6	WS-004-33	Washer.....	1
7	SD-032-07	Self-Tapping Screw 10-24 x 1 <sup>1</sup> / <sub>2</sub> Hex Washer Hd., Type TT.....	2
8	00-418481-00001	Wrap – Top (HG45CF/DF).....	1
9	00-418511-00001	Wrap – Top (HG65/85CF/DF).....	1
10	00-418478-000G1	Bearing Support Assy.....	1
11	00-418487-00002	Roller – Bearing.....	1
12	00-418488-00002	Pin – Roller.....	1
13	SD-036-03	Self-Tapping Screw 8-18 x 3 <sup>3</sup> / <sub>8</sub> Slotted Hex Washer Hd., Type AB.....	10
14	SC-109-10	Mach. Screw 6-32 x 3 <sup>3</sup> / <sub>8</sub> Slotted Pan Hd. (SST).....	1
15	NS-009-07	Mach. Nut 6-32 Hex.....	1
16	00-078752-00012	Clamp – Cable 3 <sup>3</sup> / <sub>8</sub> P.....	1
17	SC-037-80	Cap Screw 10-24 x 1 <sup>1</sup> / <sub>2</sub> Hex Hd.....	8
18	00-418159-00001	Block – Cam Switch.....	1
19	00-411496-000F3	Microswitch.....	1
20	SC-112-90	Mach. Screw 4-40 x 1 Slotted Pan Hd.....	2
21	NS-009-02	Mach. Nut 4-40 Hex.....	2
22	00-418123-000G1	Plate – Motor.....	1
*23	00-418156-00001	Gear – Motor (115 V., 60 Hz.).....	1
*25	00-418156-00003	Gear – Motor (230 V., 50/60 Hz.).....	1
26	00-418517-00001	Shroud – Motor.....	1
27	00-418484-00001	Base – Motor Mounting (HG45CF/DF).....	1
28	00-418513-00001	Base – Motor Mounting (HG65/85CF/DF).....	1
29	SD-032-07	Self-Tapping Screw 10-24 x 1 <sup>1</sup> / <sub>2</sub> Hex Washer Hd., Type TT.....	2
30	SC-037-80	Cap Screw 10-24 x 1 <sup>1</sup> / <sub>2</sub> Hex Hd.....	2
31	00-416535-00004	Switch – Relay SPDT 24 V. Coil (Electronic Ignition).....	1
32	SC-109-10	Mach. Screw 6-32 x 3 <sup>3</sup> / <sub>8</sub> Slotted Pan Hd. (SST).....	3
33	NS-009-07	Mach. Nut 6-32 Hex.....	3
34	SC-018-47	Mach. Screw 10-32 x 3 <sup>3</sup> / <sub>4</sub> Slotted Pan Hd.....	4
35	SD-036-03	Self-Tapping Screw 8-18 x 3 <sup>3</sup> / <sub>8</sub> Slotted Hex Washer Hd., Type AB.....	4
36	00-418480-00001	Wrap – Bottom (HG45CF/DF).....	1
37	00-418510-00001	Wrap – Bottom (HG65/85CF/DF).....	1
38	00-078752-00012	Clamp 3 <sup>3</sup> / <sub>8</sub> P.....	1
39	SC-109-10	Mach. Screw 6-32 x 3 <sup>3</sup> / <sub>8</sub> Slotted Pan Hd. (SST).....	1
40	NS-009-07	Mach. Nut Hex 6-32.....	1
41	00-418482-00001	Grommet.....	1
42	00-418475-000G1	Crank – Arm Assy. (Incls. Items 43 & 44).....	1
*43	SC-055-02	Set Screw 1 <sup>1</sup> / <sub>4</sub> -20 x 1 <sup>1</sup> / <sub>4</sub> Hdls., Cup Pt. (SST).....	2
*44	NS-047-73	Lock Nut 5 <sup>5</sup> / <sub>16</sub> -18 Hex.....	1
*45	WS-004-33	Washer.....	1
*46	00-418477-000G1	Coupler Assy.....	1

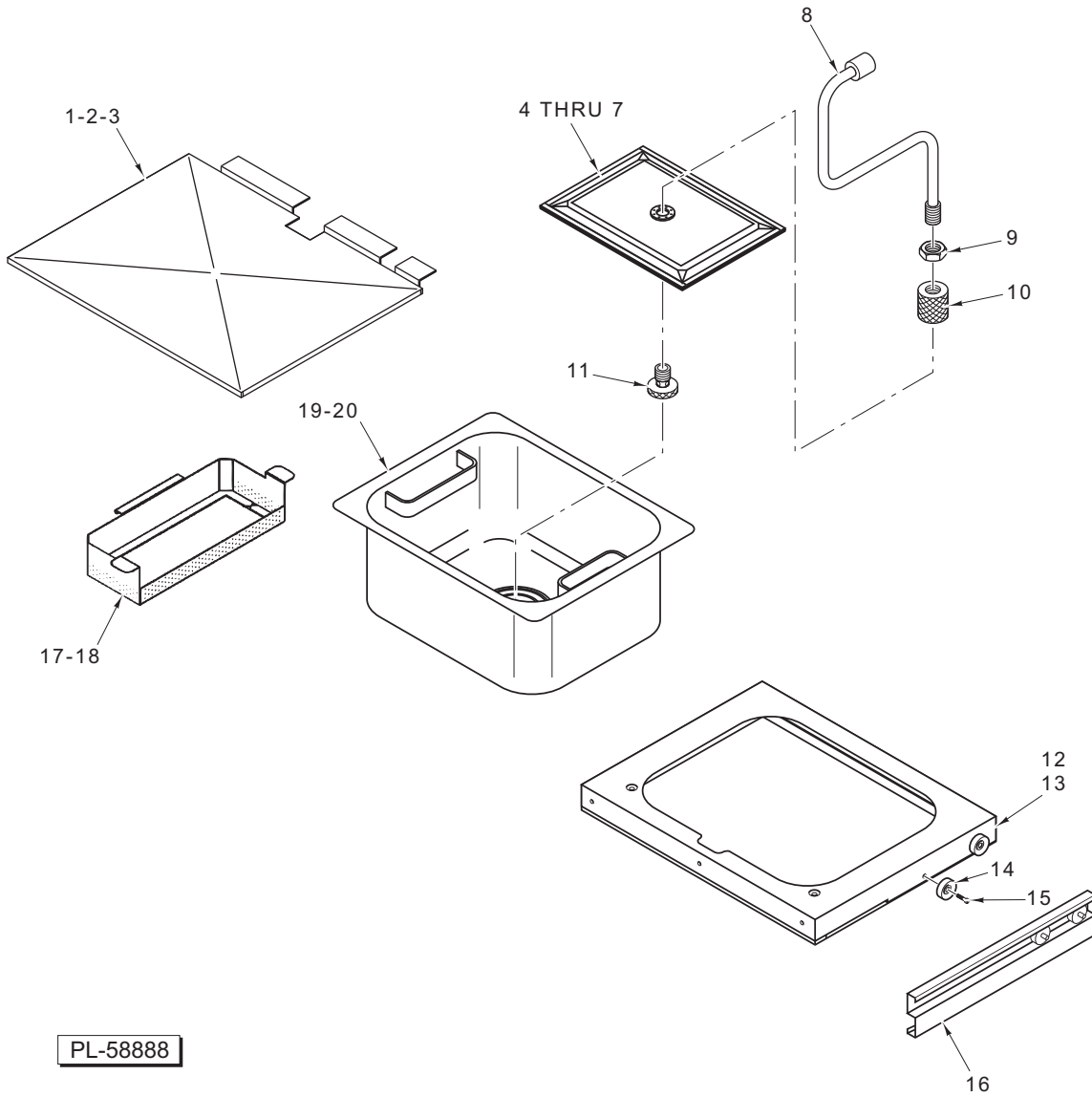
\*Quantities shown are for single basket lift.



**FILTER ASSEMBLY (PREVIOUS CONSTRUCTION)**

**FILTER ASSEMBLY (PREVIOUS CONSTRUCTION)**

ILLUS. PL-57840	PART NO.	NAME OF PART	AMT.
1	00-497374-000G1	Vessel Assy. (HG45 Series).....	1
2	00-497374-000G2	Vessel Assy. (HG65/85 Series).....	1
3	00-427672-000G2	Pipe – Oil Return Assy. ....	1
4	00-426711-000G1	Element – Filter Assy. (HG45/65 Series) .....	1
5	00-426711-000G2	Element – Filter Assy. (HG85 Series) .....	1
6	00-426630-00002	Seal – O-Ring .....	1
7	00-428180-000G4	Drawer Assy. (HG45 Series) (Incls. Item 12) .....	1
8	00-428180-000G5	Drawer Assy. (HG65 Series) (Incls. Items 10, 11, & 12) .....	1
9	00-428580-000G1	Drawer Assy. (HG85 Series) (Incls. Items 10, 11, & 12) .....	1
10	00-426600-00003	Screw 1/4-20 .....	2
11	00-426600-00002	Bearing – Roller .....	2
12	00-426600-000G1	Roller Guide Assy.....	1
13	00-426601-00002	Fitting 3/8 Compression.....	1
14	00-497375-00001	Tube – Oil Return (HG45/65 Series).....	1
15	00-426601-00001	Fitting 3/8 Compression.....	1
16	00-426568-00001	Elbow 3/8 NPT.....	1
17	FP-035-91	Pipe 1/2 x 1/8 TBE.....	1
18	00-426606-00001	Basket – Scrap (HG45/65 Series) .....	1
19	00-426606-00002	Basket – Scrap (HG85 Series) .....	1
20	00-428677-00001	Splash Guard (HG45 Series).....	1
21	00-428678-00001	Splash Guard (HG65 Series).....	1
22	00-428911-00001	Splash Guard (HG85 Series).....	1



**FILTER ASSEMBLY (CURRENT CONSTRUCTION)**

**FILTER ASSEMBLY (CURRENT CONSTRUCTION)**

ILLUS.	PART NO.	NAME OF PART	AMT.
PL-58888			
1	00-428677-00001	Splash Guard (HG45 Series).....	1
2	00-428678-00001	Splash Guard (HG65 Series).....	1
3	00-428911-00001	Splash Guard (HG85 Series).....	1
4	00-499087-00001	Screen – Fine Mesh Filter.....	1
5	00-499085-00001	Insert – Filter Screen .....	1
6	00-499086-00001	Filter – Kleenscreen Plus.....	1
7	00-499089-00001	Clip – Filter.....	1
8	00-499081-000G3	Tube – Suction.....	1
9	NS-017-049	Jam Nut .....	1
10	00-499083-00002	Coupling.....	1
11	00-499084-00002	Knob .....	1
12	00-428180-000G4	Drawer Assy. (HG45 Series) (Incls. Item 16).....	1
13	00-428180-000G5	Drawer Assy. (HG65 Series) (Incls. Items 14, 15, & 16).....	1
14	00-426600-00002	Bearing – Roller.....	2
15	00-426600-00003	Screw 1/4-20 .....	2
16	00-426600-000G1	Roller Guide Assy.....	1
17	00-426606-000G4	Basket – Scrap (HG45 Series) .....	1
18	00-426606-000G2	Basket – Scrap (HG85/65 Series) .....	1
19	00-497374-000G1	Vessel Assy. (HG45/65 Series).....	1
20	00-497374-000G2	Vessel Assy. (HG85 Series).....	1

