



**WELLS BLOOMFIELD, LLC**  
2 ERIK CIRCLE, P. O. Box 280 Verdi, NV 89439  
telephone: 888-492-2782  
fax: 888-492-2783  
[www.wellsbloomfield.com](http://www.wellsbloomfield.com)

# PARTS LIST

## PL302

### COUNTERTOP FRYERS WITH SAFETY TEST SYSTEM™ F-55 STS, F-85 F-101, F-1725

#### CONTENTS

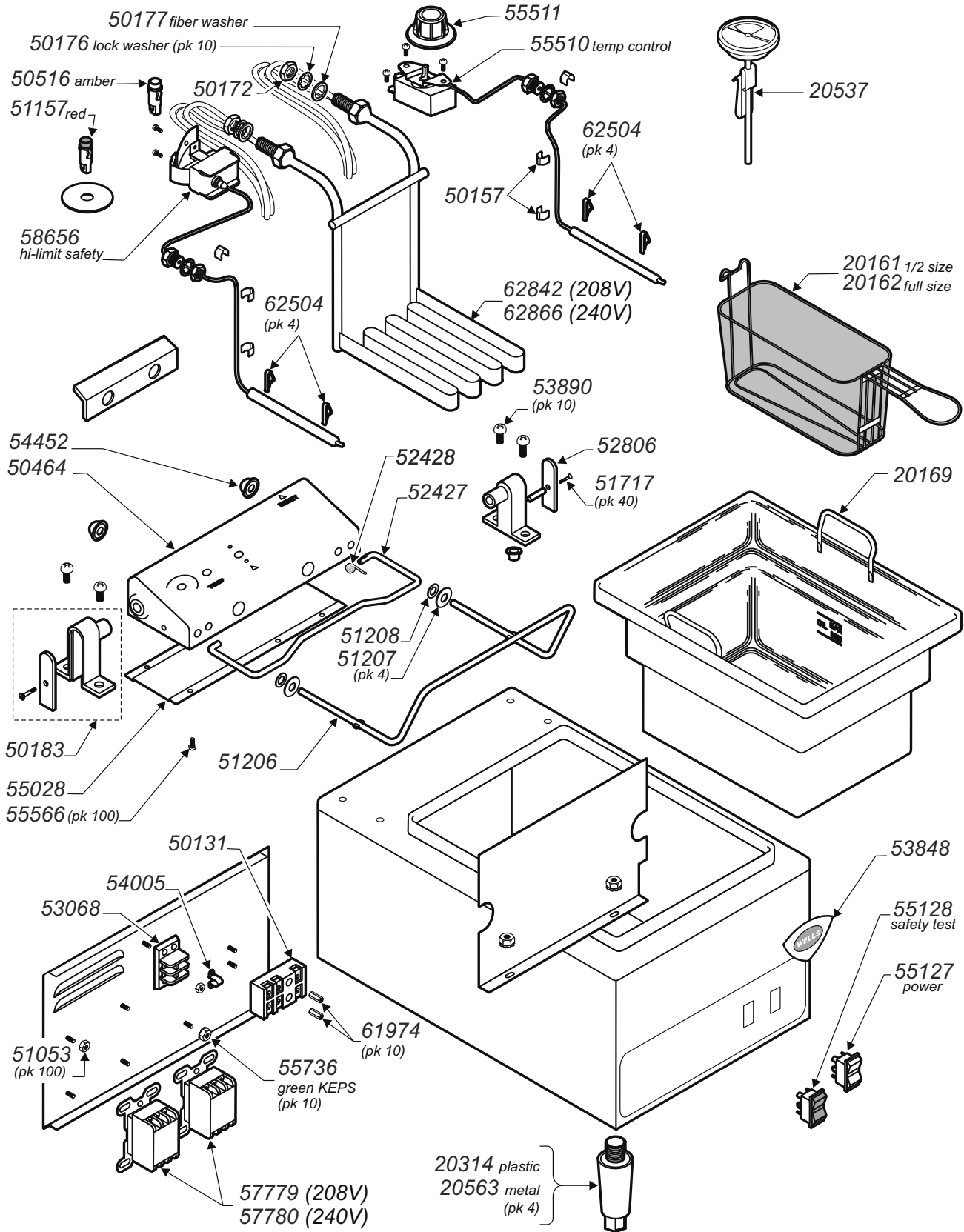
| Description      | page |
|------------------|------|
| Parts List ..... | 2    |
| F-55 STS .....   | 3    |
| F-85 .....       | 4    |
| F-101 .....      | 6    |
| F-1725 .....     | 8    |

PRINTED IN UNITED STATES OF AMERICA

| PART #                      | DESCRIPTION                    | PART #            | DESCRIPTION                     | PART #                | DESCRIPTION                     |
|-----------------------------|--------------------------------|-------------------|---------------------------------|-----------------------|---------------------------------|
| <b>OPTIONAL ACCESSORIES</b> |                                | <b>MECHANICAL</b> |                                 | <b>HARDWARE, etc.</b> |                                 |
| 20161                       | FRY BASKET, HALF-SIZE, F-55    | 50183             | BRACKET, PIVOT, F-55 85         | 50145                 | BLAMP, THERMOBULB F-101         |
| 20162                       | FRY BASKET, FULL-SIZE          | 50464             | CONTROL BOX, F-55 85            | 50157                 | CLAMP, CAPILLARY                |
| 20167                       | FRYPOT, F-101                  | 51206             | BASKET ROD, F-55 85             | 50172                 | NUT, FRYER ELEMENT              |
| 20169                       | FRYPOT, F-55 F-85              | 51423             | BASKET ROD, F-101               | 50176                 | LOCK WASHER, ELEMENT (pk 10)    |
| 20287                       | FRY BASKET, F-101              | 52427             | SUPPORT ROD, CTRL HEAD F-55 85  | 50177                 | FIBER WASHER, ELEMENT           |
| 20314                       | ADJUSTABLE LEG GRAY , SET OF 4 | 52428             | SPRING, SUPPORT ROD             | 51038                 | CLIP, TINNEMAN BLK (pk 10)      |
| 20519                       | FRYPOT, F-1725                 | 52429             | SUPPORT ROD, CTRL HEAD F-101    | 51053                 | NUTS, 8-32 KEPS (pk 100)        |
| 20537                       | THERMOMETER STS                | 52704             | BOX CONTACTOR, F-1725           | 51207                 | WASHER, SS BASKET ROD           |
| 20563                       | ADJUSTABLE LEG SS, SET OF 4    | 52806             | COVER, PIVOT BRACKET            | 51208                 | WASHER, NEOPRENE BASKET ROD     |
| 20690                       | CRUMB CRADLE 12"x8½"           | 53245             | COVER, PIVOT INTERMEDIATE, F-85 | 51717                 | SCREW 8-32 x 7/8 PH FL          |
| 20820                       | FRY BASKET, TWIN, F-1725       | 53526             | HANDLE, ELEM LIFT F-101         | 51718                 | SCREW 8-32 x 3/16 RD (pk 10)    |
| 21727                       | PAN WARMER LANDING STATION     | 53528             | CLAMP ELEM LIFT LEFT F-101      | 51728                 | TIE CABLE LG PANDUIT #42        |
| <b>ELECTRICAL</b>           |                                | 53529             | PIVOT ELEMENT LIFT F-101        | 53890                 | SCREW 12-24 x3/4 (pk 10)        |
| 50131                       | TERMINAL BLOCK 3P              | 53891             | CLAMP ELEM LIFT RIGHT F-101     | 53935                 | SCREW #6SMS x 1/4 (pk 100)      |
| 50147                       | SAFETY SWITCH F-1725           | 53848             | WELLS TRADE MARK CASTING        | 54284                 | RIVET POP 3/32ID x1/8           |
| 50516                       | INDICATOR LIGHT, AMBER         | 53860             | GASKET, CONTACTOR BOX F-1725    | 55566                 | SCREW #6SMS # 1/4 TH SS (pk100) |
| 50578                       | TERMINAL BLOCK 3P, F-101       | 54452             | RETAINER, BASKET ROD            | 55627                 | RING, WIRE SS .25" ID F-101     |
| 51157                       | INDICATOR LIGHT, RED           | 54662             | COVER, CONTROL BOX F-1725       | 55637                 | RING, WIRE SS .25" ID F-1725    |
| 53068                       | TERMINAL BLOCK 2P              | 54665             | SUPPORT ROD, CTRL HEAD F-1725   | 55736                 | NUT, 8-32 KEPS GREEN (pk 10)    |
| 54005                       | JUMPER, FLAME SENSOR, F-55     | 54666             | BASKET ROD F-1725               | 58751                 | RING WIRE SS .25" x .093"       |
| 54131                       | CONNECTOR WIRE 12-14 GA        | 54748             | COVER CONTACTOR BOX F-1725      | 61974                 | NUT 8-32 7/8" LG ALUM (pk 10)   |
| 55510                       | THERMOSTAT, F-55               | 55028             | COVER, CONTROL BOX, F-55 85     | 62504                 | CLIP, THERMOBULB (pk 4)         |
| 57779                       | CONTACTOR, 3P 208V             | 55034             | CONTROL BOX, F-101              | 63665                 | CLIP THERMOBULB (pk 10)         |
| 55127                       | SWITCH, POWER LIGHTED          | 55035             | COVER, CONTROL BOX, F-101       | 63738                 | BOOT, ROCKER SWITCH             |
| 55128                       | SWITCH, SAFETY TEST RED        | 55511             | KNOB, TEMP CONTROL              |                       |                                 |
| 57780                       | CONTACTOR, 3P 240V             | 58665             | CLAMP, THERMOBULB, F-1725       |                       |                                 |
| 58656                       | THERMO, HI-LIMIT SAFETY        | 58667             | CLAMP, CAPILLARY F-1725         |                       |                                 |
| 58661                       | ELEMENT, 208V, F-1725          | 58687             | CONTROL BOX, F-1725             |                       |                                 |
| 58662                       | ELEMENT, 240V, F-1725          | 58717             | ELEMENT CLAMP FRONT F-1725      |                       |                                 |
| 62842                       | ELEMENT, 208V, F-55 F-85       | 58718             | BRACKET, ELEM CLAMP F-1725      |                       |                                 |
| 62866                       | ELEMENT, 240V, F-55 F-85       | 58719             | ELEMENT CLAMP REAR, F-1725      |                       |                                 |
| 62869                       | ELEMENT, 208V, F-101           | 58729             | HANDLE, LIFT ASSY F-1725        |                       |                                 |
| 62870                       | ELEMENT, 240V, F-101           | 62504             | CLAMP, THERMOBULB, F-101        |                       |                                 |
| 62896                       | CONNECTOR WIRE 12-14 GA        | 64625             | ELEMENT LIFT ASSY, F-101        |                       |                                 |
| 58995                       | HEAD ASSY F-1725 (208V)        |                   |                                 |                       |                                 |
| 62905                       | HEAD ASSY F-55 (208V)          |                   |                                 |                       |                                 |
| 62906                       | HEAD ASSY F-55 (240V)          |                   |                                 |                       |                                 |
| 62922                       | HEAD ASSY F-85 (208V)          |                   |                                 |                       |                                 |
| 62923                       | HEAD ASSY F-85 (240V)          |                   |                                 |                       |                                 |
| 62932                       | HEAD ASSY F-101 (208V)         |                   |                                 |                       |                                 |
| 62933                       | HEAD ASSY F-101 (240V)         |                   |                                 |                       |                                 |

PL302 Service Parts List - Countertop Fryer w/ Safety Test System

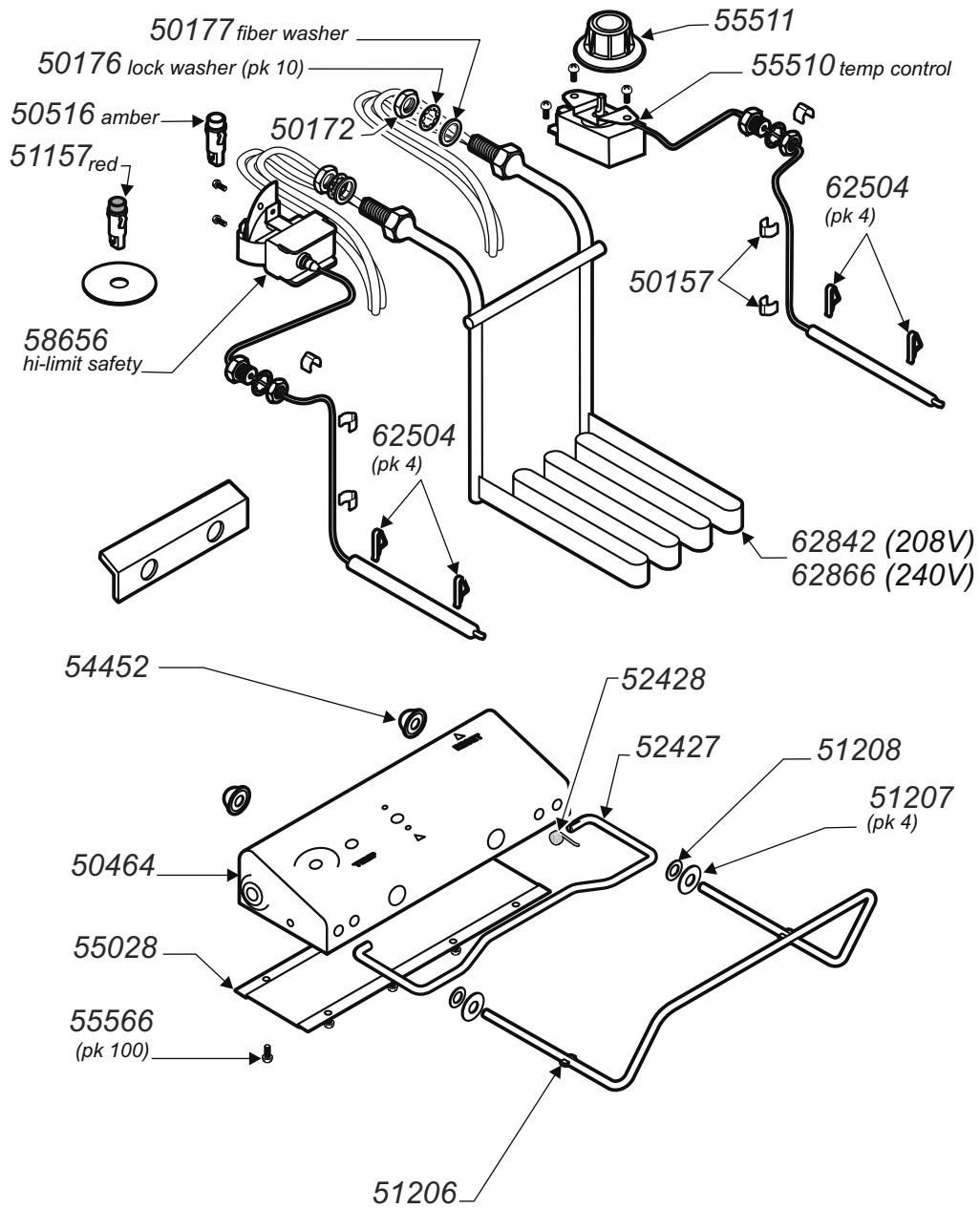
**F-55 STS - COUNTERTOP SINGLE-HEAD FRYER W/ SAFETY TEST SYSTEM™**



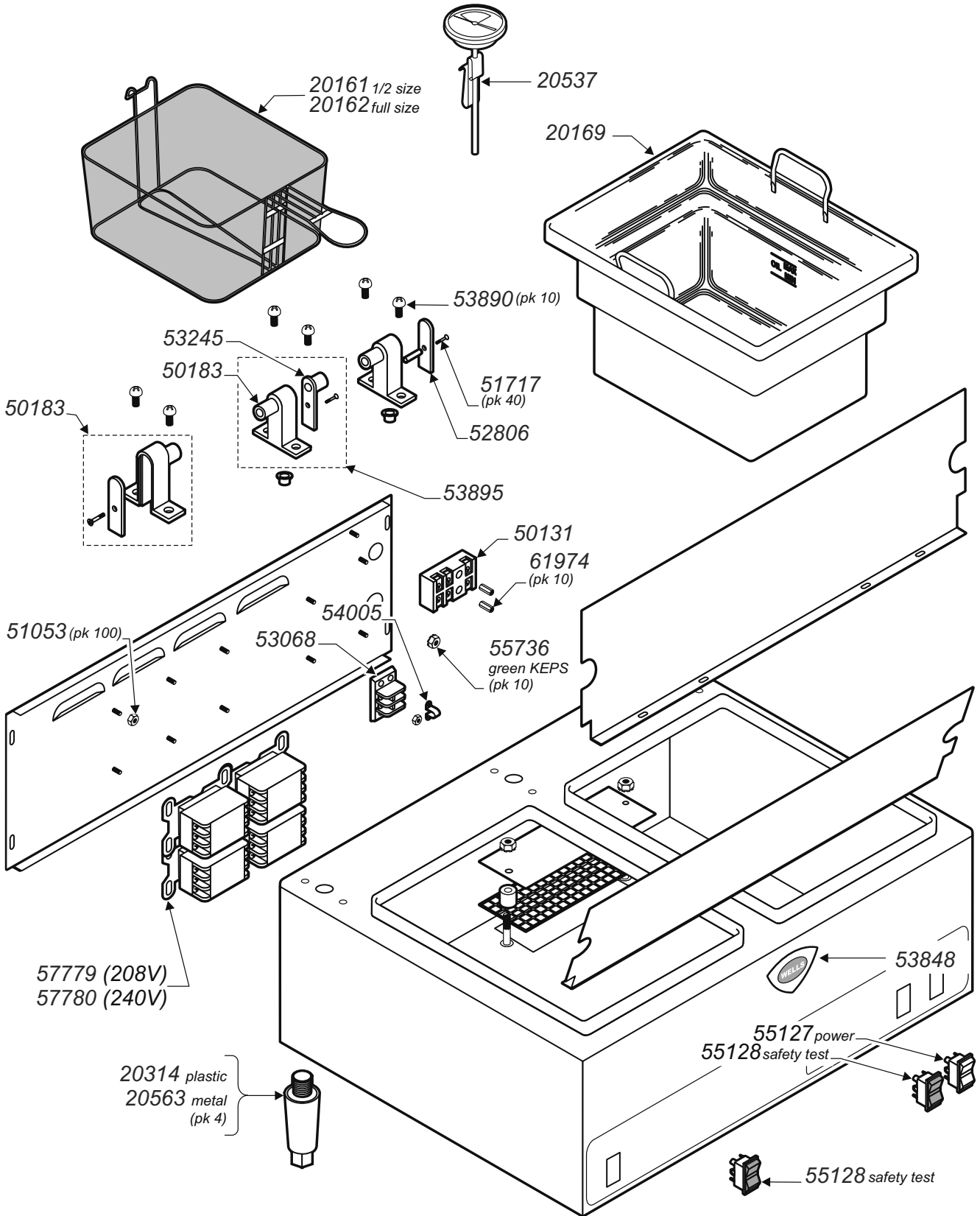
PL302 Service Parts List - Countertop Fryer w/ Safety Test System

**F-85 - COUNTERTOP DUAL-HEAD FRYER W/ SAFETY TEST SYSTEM™  
HEAD ASSEMBLY COMPONENTS**

*NOTE: Unit has two identical fryer heads. Only one is shown*

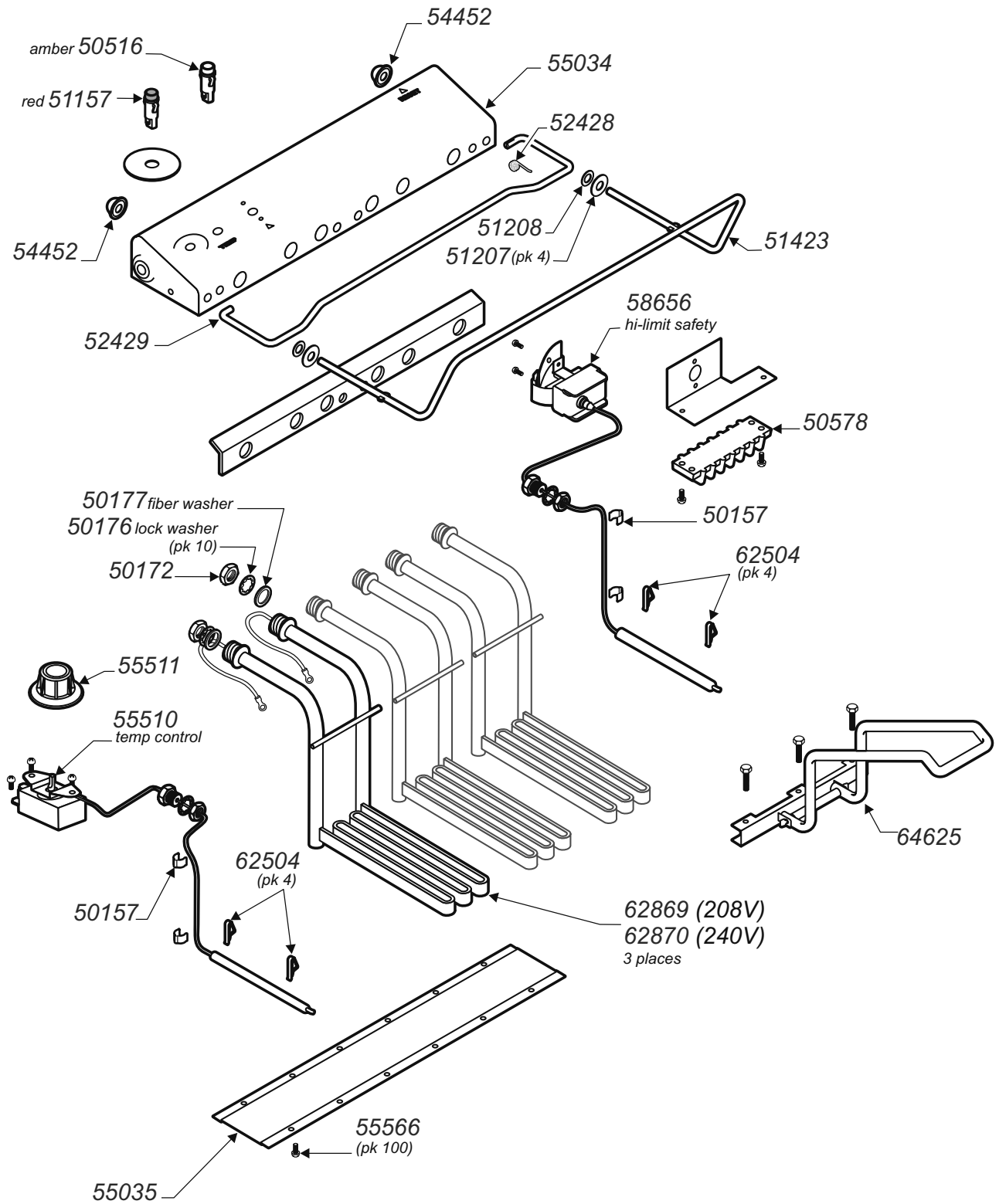


**F-85 - COUNTERTOP DUAL-HEAD FRYER W/ SAFETY TEST SYSTEM™  
CABINET COMPONENTS**



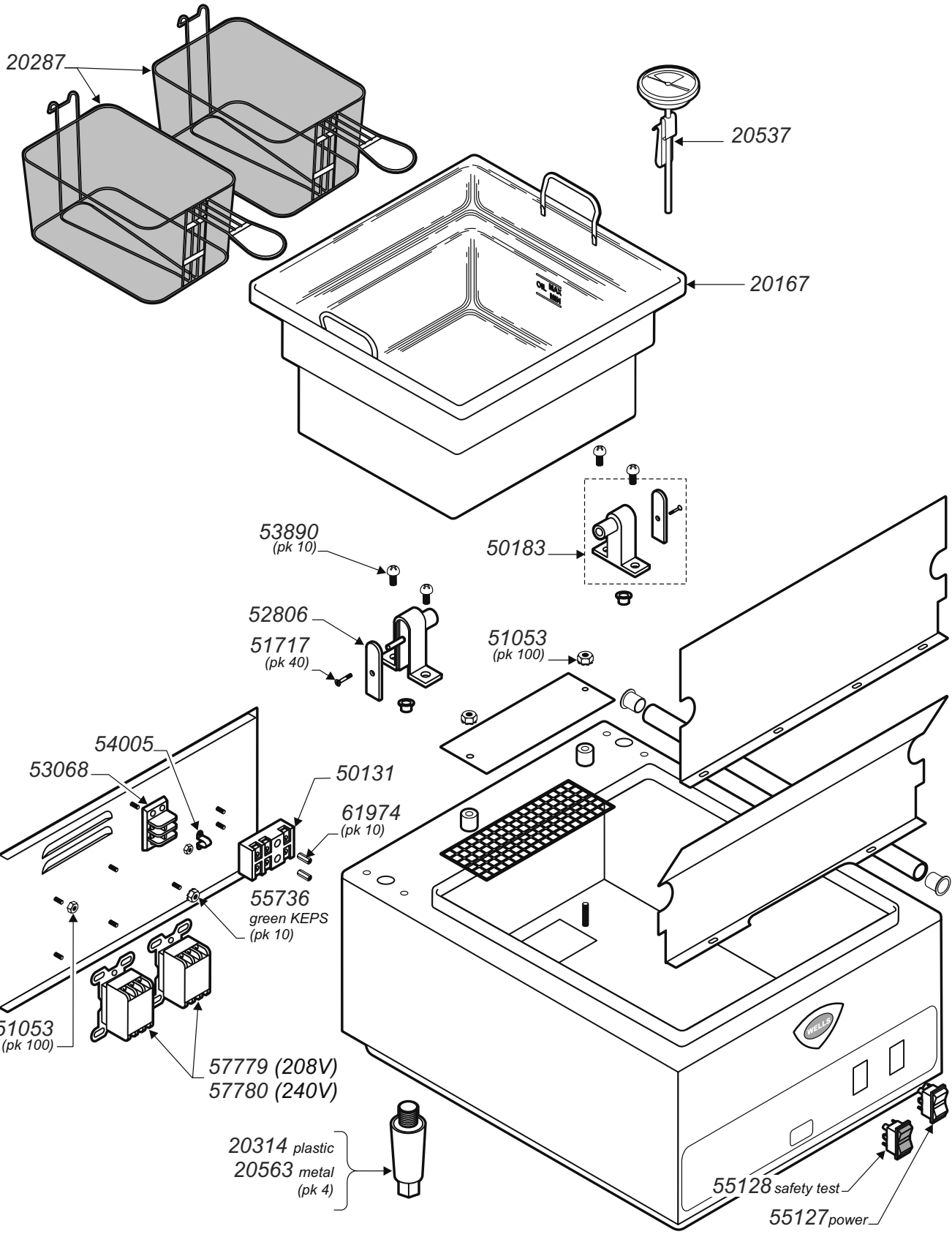
PL302 Service Parts List - Countertop Fryer w/ Safety Test System

**F-101 - COUNTERTOP MULTI-ELEMENT SINGLE-HEAD FRYER W/ SAFETY TEST SYSTEM™  
HEAD ASSEMBLY COMPONENTS**



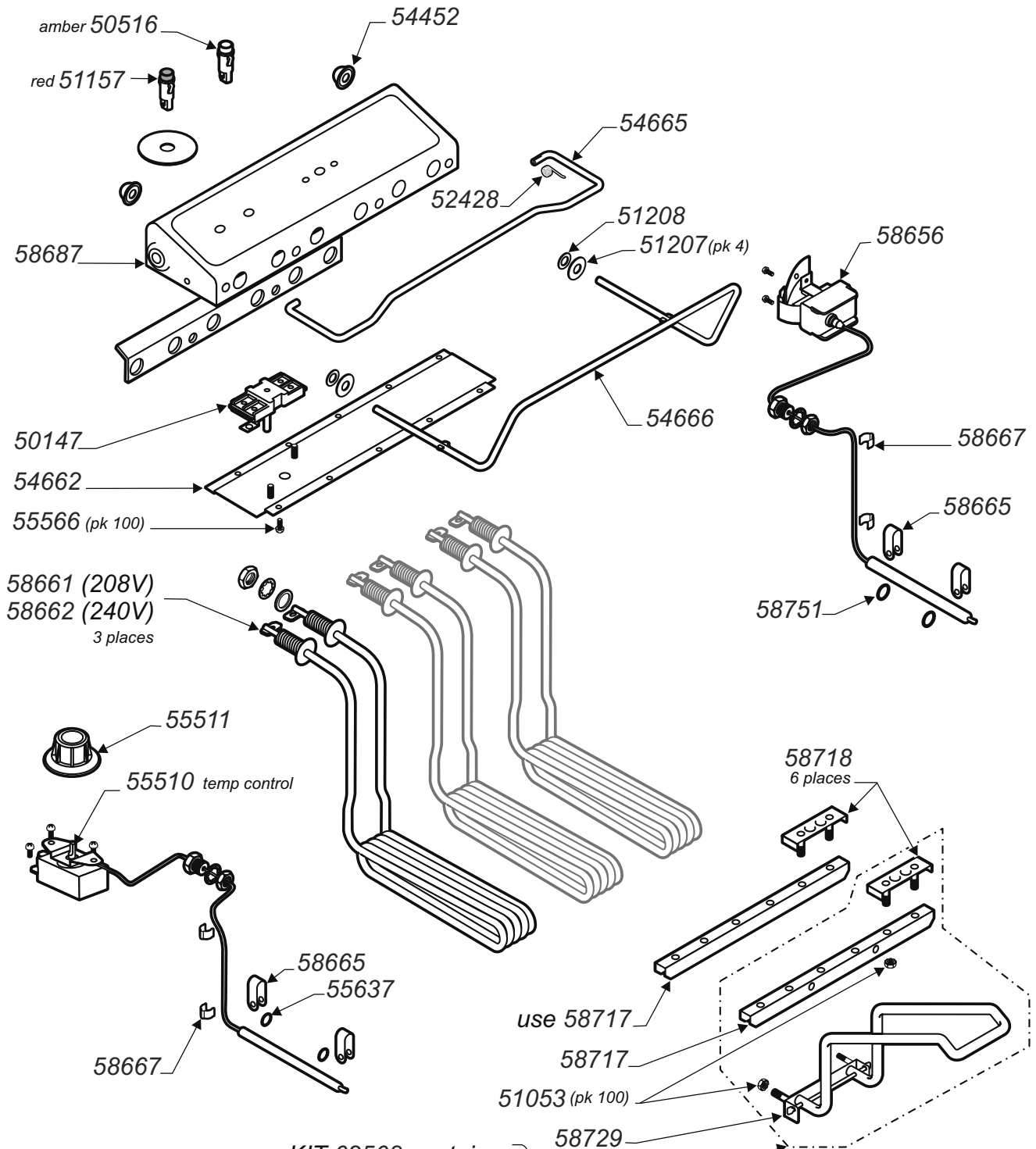
PL302 Service Parts List - Countertop Fryer w/ Safety Test System

**F-101 - COUNTERTOP MULTI-ELEMENT SINGLE-HEAD FRYER W/ SAFETY TEST SYSTEM™  
CABINET COMPONENTS**



PL302 Service Parts List - Countertop Fryer w/ Safety Test System

**F-101 - COUNTERTOP MULTI-ELEMENT SINGLE-HEAD FRYER W/ SAFETY TEST SYSTEM™  
HEAD ASSEMBLY COMPONENTS**

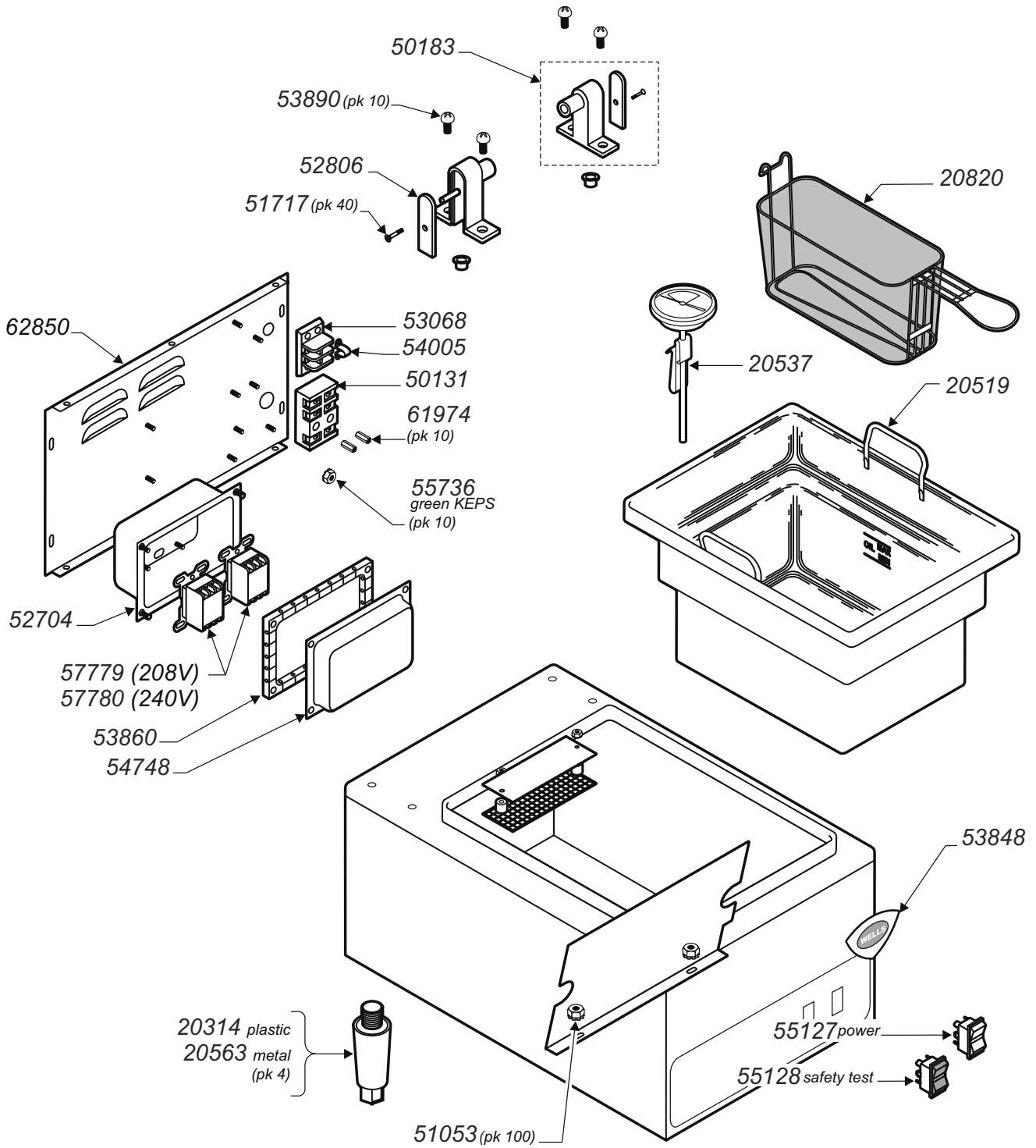


**KIT 62568 contains:**

- 8 ea 51053
- 1 ea 58729
- 1 ea 58717
- 3 ea 58718



**F-101 - COUNTERTOP MULTI-ELEMENT SINGLE-HEAD FRYER W/ SAFETY TEST SYSTEM™  
CABINET COMPONENTS**



PL302 Service Parts List - Countertop Fryer w/ Safety Test System



Commercial Food Equipment Service Association

Wells Bloomfield proudly supports CFESA  
Commercial Food Equipment Service Association

**SERVICE TRAINING - QUALITY SERVICE**



**CUSTOMER SATISFACTION**



**WELLS BLOOMFIELD, LLC**

2 ERIK CIRCLE, P. O. Box 280 Verdi, NV 89439

telephone: 888-492-2782

fax: 888-492-2783

[www.wellsbloomfield.com](http://www.wellsbloomfield.com)

PRINTED IN UNITED STATES OF AMERICA