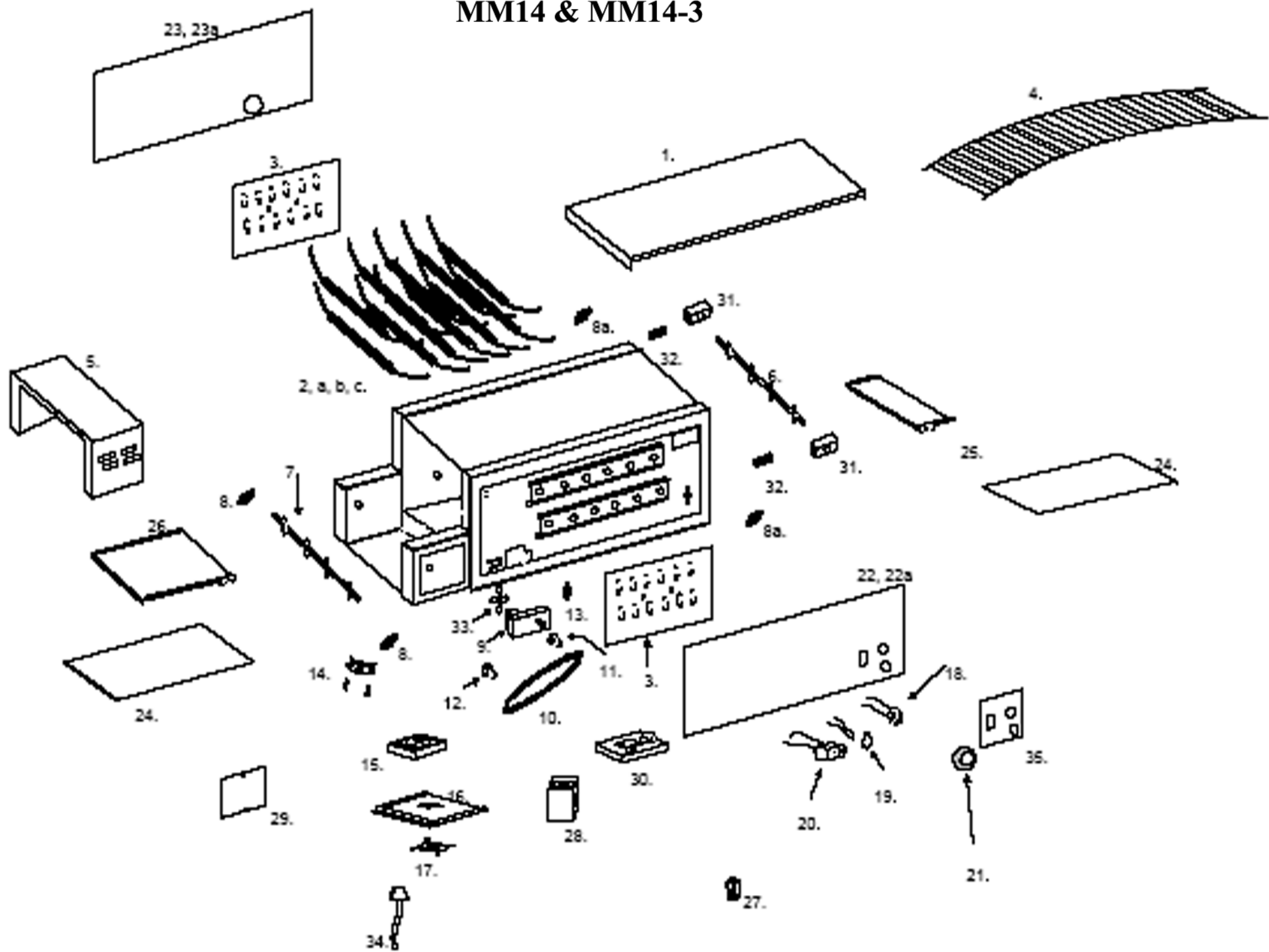


MM14 & MM14-3



MODEL: MM14 & MM14-3 Parts List

KEY	Serial Number Range	0801 to 0102		0999 to 0701		0998 to 0899	
	DESCRIPTION	PART #	QTY	PART #	QTY	PART #	QTY
1	COVER, TOP	GE-402163	1	GE-402163	1	GE-402224	1
3	RETAINER, HEATER TUBE	GE-402629	1	GE-402161	1	GE-402303	1
4	CONVEYOR BELT (14 x 82.5") <i>Longer than original</i>	GE-160031	1	GE-160031	1	GE-160031	1
NS	LINK, CONVEYOR BELT	2B-200618	EA	2B-200618	EA	2B-200618	EA
NS	LINK, MASTER, CONVEYOR BELT	2B-200620	3	2B-200620	3	2B-200620	3
5	TUNNEL EXTENDER	GE-100982	1	GE-100982	1	GE-100956	1
6	SHAFT, IDLER	GE-101257	1	GE-101257	1	GE-101257	1
7	SHAFT, DRIVE	GD-101252	1	GD-101252	1	GD-101252	1
8	BUSHING, REAR, <i>FIXED</i>	GB-112262	2	GB-112262	2	GB-112262	2
8a	BUSHING, FRONT, <i>Non-spring Load</i>	N/A	N/A	GB-112262	2	GB-112262	2
9	MOTOR, DRIVE (<i>L-R</i>)	2U-Z11871	1	2U-Z11871	1	2U-Z11871	1
9	MOTOR, DRIVE (<i>R-L</i>)	2U-Z11870	1	2U-Z11870	1	2U-Z11870	1
10	CHAIN, DRIVE (27")	GD-150023	1	GD-150023	1	GD-150023	1
11	SPROCKET, DRIVE (25B24 X 5/16")	2P-200650	1	2P-200650	1	2P-200650	1
12	SPROCKET, DRIVEN (25B11 X 3/8")	2P-115362	1	2P-115362	1	2P-115362	1
13	SWITCH, FAN MOTOR	2E-200574	2	2E-200574	2	2E-200574	2
14	SWITCH, HIGH LIMIT RESET	2E-200566	1	2E-200566	1	2E-200566	1
15	MOTOR, FAN	2U-200561	1	2U-200561	1	2U-200561	1
16	COVER, CONTROL BOX	GE-402635	1	GD-401636	1	GD-401636	1
17	GUARD, FAN MOTOR	2R-200562	1	2R-200562	1	2R-200562	1
18	SWITCH, SPEED CONTROL	2E-118066	1	GD-118060	1	GD-118060	1
19	LIGHT, PILOT	2J-200427	1	2J-200427	1	2J-200427	1
20	SWITCH, MASTER ON/OFF	2E-200552	1	2E-200552	1	2E-200552	1
21	KNOB, SPEED CONTROL	2R-200761	1	SP-115360	1	SP-115360	1
22	PANEL, CONTROL SIDE (<i>L-R</i>)	GE-402638	1	GE-402231	1	GE-402231	1
22a	PANEL, CONTROL SIDE (<i>R-L</i>)	GE-402639	1	GE-402230	1	GE-402230	1
23	PANEL, CORD SIDE (<i>L-R</i>)	GE-402156	1	GE-402156	1	GE-402156	1
23a	PANEL, CORD SIDE (<i>R-L</i>)	GE-402155	1	GE-402155	1	GE-402155	1
24	TRAY, CRUMB	GE-100955	2	GE-100955	2	GE-100955	2
25	TRAY, LOAD-UP	GE-402640	1	GE-100957	1	GE-100957	1
26	TRAY, UNLOAD	GE-100944	1	GE-100978	1	GE-100978	1
27	LEG, 2 1/2" METAL	2R-200716	4	2R-200716	4	2R-200716	4
28	CONTACTOR, 40 AMP	2E-302789	1	2E-302789	1	2E-302789	1
29	PANEL, CONVEYOR EXTENSION	GD-401206	2	GD-401206	2	GD-401206	2
30	* CONTROL, MOTOR BOARD ANACON	PS-Z7966	1	PS-Z7966	1	PS-Z7966	1
31	* BUSHING, FRONT, SPRING LOADED	* 2P-200765	2	N/A	N/A	N/A	N/A
32	* SPRING, CONVEYOR BUSHING	* 2P-200766	2	N/A	N/A	N/A	N/A
33	BLADE, FAN 3"	2R-200721	1	2R-200721	1	2R-200721	1
34	CORD, FAN MOTOR	2E-200387	1	2E-200387	1	2E-200387	1
35	LABEL, CONTROL PANEL	2M-200890	1	2M-200890	1	2M-200890	1
NS	CORD, 10/3, <i>NO PLUG</i>	GE-140062	1	GE-140062	1	GE-140062	1
NS	TERMINAL BLOCK, 12 POS., LARGE	2E-200554	4	2E-200554	4	2E-200554	3
NS	JUMPER, 12 POSITION, LARGE	2B-200557	3	2B-200557	3	2B-200557	3
NS	TERMINAL BLOCK, MAIN POWER	SP-115402	1	SP-115402	1	SP-115402	1
NS	MAGNET, BAKE AID	2M-200816	1	2M-200816	1	2M-200816	1
NS	BRACKET, BAKE AID MAGNET	GE-402525	1	GE-402525	1	GE-402525	1
NS	RACK, BELT SUPPORT	GE-100713	1	GE-100713	1	GE-100713	1

HEATER TUBES

KEY	Serial Number Range	0801 to 0102		0999 to 0701		0998 to 0899	
	DESCRIPTION	PART #	QTY	PART #	QTY	PART #	QTY
2	208V Top Quartz (<i>198010=450W, 104V, 22.5 ohm</i>)	GE-198010	6	GE-198010	6	GE-198002	6
2a	208V Bottom Quartz (<i>500W, 208V, 81.3 ohm</i>)	GE-198002	6	GE-198002	6	GE-198002	6
2b	208V Bottom Metal (cal-rod)	2N-209195	6	2N-209195	6	2N-209195	6
2c	240V Top Quartz (<i>198011=450W, 120V, 30.10 ohm</i>)	GE-198011	6	GE-198011	6	GE-198005	6
2d	240V Bottom Quartz (<i>500W, 240V, 108.3 ohm</i>)	GE-198005	6	GE-198005	6	GE-198005	6
2e	240V Bottom Metal (cal-rod)	2N-209196	6	2N-209196	6	2N-209196	6
2c	220V Top Quartz			ZZ-197884	6		
2d	220V Bottom Metal (cal-rod)			2N-209196	6		

* Part Specific to MM14-3