

WELLS MANUFACTURING
10 Sunnen Dr., St. Louis, MO 63143
telephone: 314-678-6314
fax: 314-781-2714
www.wellsbloomfield.com

211

OWNERS MANUAL

BELGIAN WAFFLE BAKER

MODEL BWB-1S BWB1SE

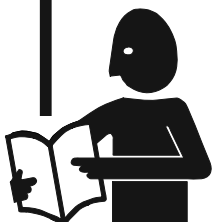


Model BWB-1S

Includes
**INSTALLATION
USE & CARE
EXPLODED VIEW
PARTS LIST
WIRING DIAGRAM**

IMPORTANT: DO NOT DISCARD THIS MANUAL

This manual is considered to be part of the appliance and is to be given to the OWNER or MANAGER of the restaurant, or to the person responsible for TRAINING OPERATORS of this appliance. Additional manuals are available from your WELLS DEALER.



THIS MANUAL MUST BE READ AND UNDERSTOOD BY ALL PERSONS USING OR INSTALLING THIS APPLIANCE. Contact your WELLS DEALER if you have any questions concerning installation, operation or maintenance of this equipment.

LIMITED WARRANTY STATEMENT

Unless otherwise specified, all commercial cooking equipment manufactured by Wells Manufacturing is warranted against defects in materials and workmanship for a period of one year from the date of original installation or 18 months from the date of shipment from our factory, whichever comes first, and is for the benefit of the original purchaser only.

THIS WARRANTY IS THE COMPLETE AND ONLY WARRANTY, EXPRESSED OR IMPLIED IN LAW OR IN FACT, INCLUDING BUT NOT LIMITED TO, WARRANTIES OF MERCHANTABILITY OR FITNESS FOR ANY PARTICULAR PURPOSE, AND/OR FOR DIRECT, INDIRECT OR CONSEQUENTIAL DAMAGES IN CONNECTION WITH WELLS BLOOMFIELD PRODUCTS. This warranty is void if it is determined that, upon inspection by an authorized service agency, the equipment has been modified, misused, misapplied, improperly installed, or damaged in transit or by fire, flood or act of God. It also does not apply if the serial nameplate has been removed, or if service is performed by unauthorized personnel. The prices charged by Wells Manufacturing for its products are based upon the limitations

in this warranty. Seller's obligation under this warranty is limited to the repair of defects without charge by a Wells Manufacturing factory authorized service agency or one of its sub-service agencies. This service will be provided on customer's premises for non-portable models. Portable models (a device with a cord and plug) must be taken or shipped to the closest authorized service agency, transportation charges prepaid, for service. In addition to restrictions contained in this warranty, specific limitations are shown in the Service Policy and Procedure Guide. Wells Manufacturing authorized service agencies are located in principal cities. This warranty is valid in the United States and Canada and void elsewhere. Please consult your classified telephone directory, your foodservice equipment dealer or contact:

Wells Manufacturing
10 Sunnen Dr., St. Louis MO 63143 USA
phone (314) 678-6314 or fax (314) 781-2714

for information and other details concerning warranty.

SERVICE POLICY AND PROCEDURE GUIDE and ADDITIONAL WARRANTY EXCLUSIONS

1. Resetting of safety thermostats, circuit breakers, over load protectors, and/or fuse replacements are not covered by this warranty unless warranted conditions are the cause.
2. All problems due to operation at voltages or phase other than specified on equipment nameplates are not covered by this warranty. Conversion to correct voltage and/or phase must be the customer's responsibility.
3. All problems due to electrical connections not made in accordance with electrical code requirements and wiring diagrams supplied with the equipment are not covered by this warranty.
4. Replacement of items subject to normal wear, to include such items as knobs, light bulbs; and, normal maintenance functions including adjustments of thermostats, adjustment of micro switches and replacement of fuses and indicating lights are not covered by warranty.
5. Damage to electrical cords and/or plug due to exposure to excessive heat are not covered by this warranty.
6. Full use, care, and maintenance instructions supplied with each machine. Noted maintenance and preventative maintenance items, such as servicing and cleaning schedules, are customer responsibility. Those miscellaneous adjustments noted are customer responsibility. Proper attention to preventative maintenance and scheduled maintenance procedures will prolong the life of the appliance.
7. Travel mileage is limited to sixty (60) miles from an Authorized Service Agency or one of its sub-service agencies.
8. All labor shall be performed during regular working hours. Overtime premium will be charged to the buyer.
9. All genuine Wells replacement parts are warranted for ninety (90) days from date of purchase on non-warranty equipment. This parts warranty is limited only to replacement of the defective part(s). Any use of non-genuine Wells parts completely voids any warranty.
10. Installation, labor, and job check-outs are not considered warranty and are thus not covered by this warranty.
11. Charges incurred by delays, waiting time or operating restrictions that hinder the service technician's ability to perform service are not covered by warranty. This includes institutional and correctional facilities.

SHIPPING DAMAGE CLAIM PROCEDURE

NOTE: For your protection, please note that equipment in this shipment was carefully inspected and packaged by skilled personnel before leaving the factory. Upon acceptance of this shipment, the transportation company assumes full responsibility for its safe delivery.

IF SHIPMENT ARRIVES DAMAGED:

1. **VISIBLE LOSS OR DAMAGE:** Be certain that any visible loss or damage is noted on the freight bill or express receipt, and that the note of loss or damage is signed by the delivery person.
2. **FILE CLAIM FOR DAMAGE IMMEDIATELY:** Regardless of the extent of the damage.
3. **CONCEALED LOSS OR DAMAGE:** if damage is unnoticed until the merchandise is unpacked, notify the transportation company or carrier immediately, and file "CONCEALED DAMAGE" claim with them. This should be done within fifteen (15) days from the date the delivery was made to you. Be sure to retain the container for inspection.

Wells Manufacturing cannot assume liability for damage or loss incurred in transit. We will, however, at your request, supply you with the necessary documents to support your claim.

TABLE OF CONTENTS

WARRANTY	xi
SPECIFICATIONS	1
FEATURES & OPERATING CONTROLS	2
PRECAUTIONS & GENERAL INFORMATION	3
AGENCY LISTING INFORMATION	3
INSTALLATION	4
OPERATION	5
OPERATION - ELECTRONIC UNITS	6
CLEANING INSTRUCTIONS	7
TIMER ADJUSTMENT	9
TROUBLESHOOTING SUGGESTIONS	9
EXPLODED VIEW & PARTS LIST	10 - 15
WIRING DIAGRAM	16
PARTS & SERVICE	17
CUSTOMER SERVICE DATA	17

INTRODUCTION

Thank You for purchasing this Wells Manufacturing appliance.

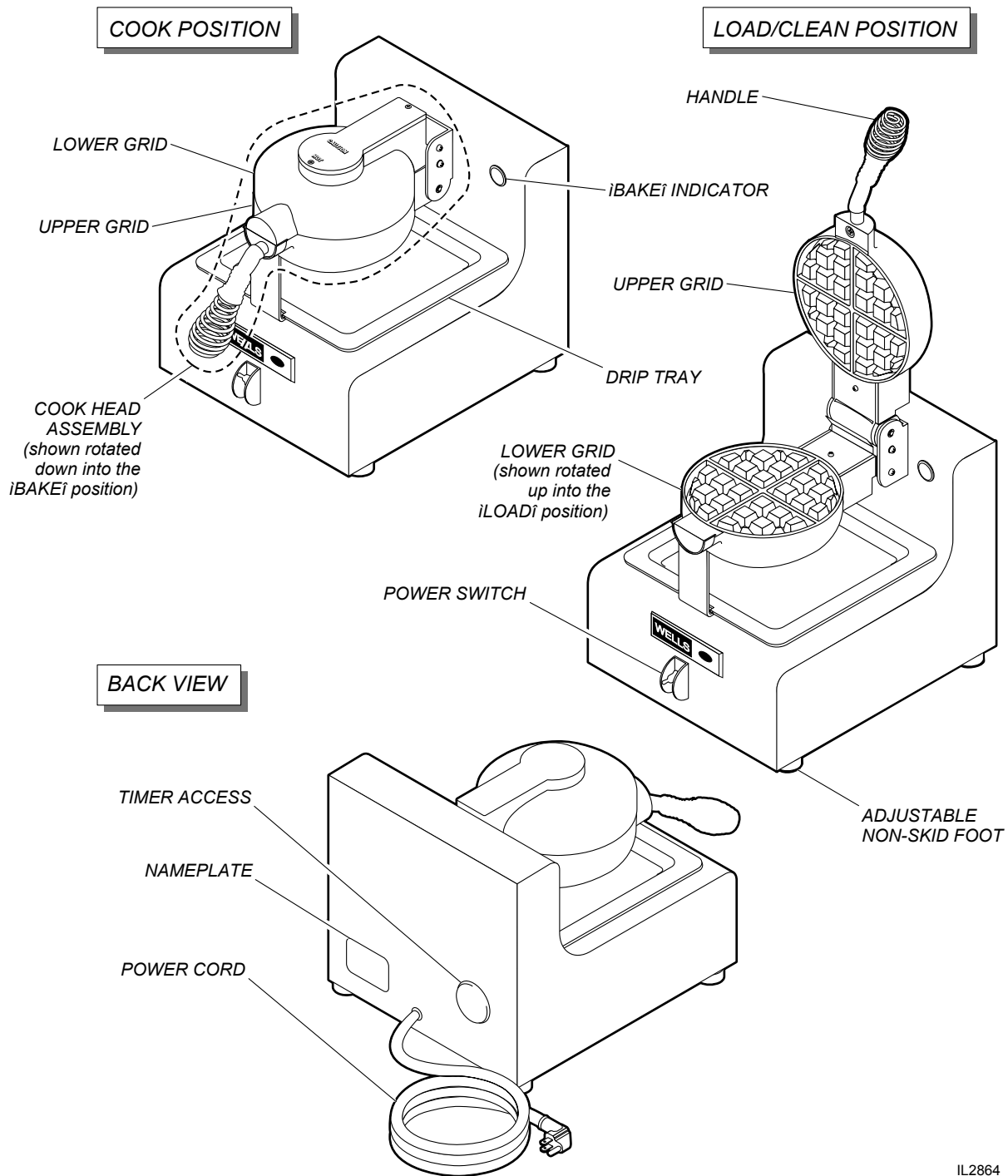
Proper installation, professional operation and consistent maintenance of this appliance will ensure that it gives you the very best performance and a long, economical service life.

This manual contains the information needed to properly install this appliance, and to use and care for the appliance in a manner which will ensure its optimum performance.

SPECIFICATIONS

MODEL	STYLE	VOLTAGE 1 ϕ	WATTS	AMPS	POWER SUPPLY CORD
BWB1S	Single Belgian Waffle Baker	120 VAC	900W	7.5 A	NEMA 5-15P
BWB1SE-KOR		220/240V	792/912	3.6/3.8	CEE7/VII

FEATURES & OPERATING CONTROLS



IL2864

M211 2M-307154 Owners Manual for BWB-1S Belgian Waffle Baker

Fig. 1 Belgian Waffle Baker - Features & Operating Controls

PRECAUTIONS AND GENERAL INFORMATION



DANGER: BURN HAZARD

Contact with cooking grid surface will cause severe burns. Use the handle to lift the grid or rotate the cook head. Avoid contact with grid surfaces.



WARNING: ELECTRIC SHOCK HAZARD

All servicing requiring access to non-insulated components must be performed by qualified service personnel. DO NOT open any access panel that requires the use of tools. Failure to heed this warning may result in severe electric shock.

This appliance is intended for use in commercial establishments only.

This appliance is intended to prepare food for human consumption.

No other use is recommended or authorized by the manufacturer or its agents.

Operators of this appliance must be familiar with the appliance use, limitations and associated restrictions. Operating instructions must be read and understood by all persons using or installing this appliance.

Cleanliness of this appliance is essential to good sanitation. Read and follow all included cleaning instructions and schedules to ensure the safety of the food product.

Disconnect this appliance from electrical power before performing any maintenance or servicing.

DO NOT submerge this appliance in water. This appliance is not jet stream approved. Do not direct water jet or steam jet at this appliance, or at any control panel or wiring. Do not splash or pour water on, in or over any controls, control panel or wiring.

Exposed surfaces of this appliance can be hot to the touch and may cause burns.

The technical content of this manual, including any wiring diagrams, schematics, parts breakdown illustrations and/or adjustment procedures, is intended for use by qualified technical personnel. Any procedure which requires the use of tools must be performed by a qualified technician.

This manual is considered to be a permanent part of the appliance. This manual and all supplied instructions, diagrams, schematics, parts breakdown illustrations, notices and labels must remain with the appliance if it is sold or moved to another location.

This appliance is made in the USA. Unless otherwise noted, this appliance has American sizes on all hardware.



CAUTION: RISK OF DAMAGE

DO NOT connect or energize this appliance until all installation instructions are read and followed. Damage to the appliance will result if these instructions are not followed.



CAUTION: HOT SURFACE

Exposed surfaces can be hot to the touch and may cause burns.

AGENCY LISTING INFORMATION

This appliance conforms to NSF Standard 4 for sanitation only if installed in accordance with the supplied *Installation Instructions* and maintained according to the instructions in this manual.

This appliance is  Listed under UL File E6070 for 120V.



STD 4



E6070

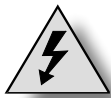
INSTALLATION

NOTE: DO NOT discard the carton or other packing materials until you have inspected the appliance for hidden damage and tested it for proper operation. Refer to *SHIPPING DAMAGE CLAIM PROCEDURE* on the inside front cover of this manual.



CAUTION: RISK OF DAMAGE

DO NOT connect or energize this appliance until all installation instructions are read and followed. Damage to the appliance will result if these instructions are not followed.



CAUTION: ELECTRICAL SHOCK HAZARD

The ground prong of the power cord is part of a system designed to protect you from electric shock in the event of internal damage to the appliance.

NEVER CUT OFF THE GROUND PRONG (large round prong). NEVER TWIST A PRONG TO FIT AN EXISTING RECEPTACLE.

Contact a licensed electrician to install an electrical receptacle appropriate to the voltage and amperage requirements of the waffle baker.

IMPORTANT:

Damage due to being connected to the wrong voltage or phase is NOT covered by warranty.

UNPACKING & INSPECTION

Carefully remove the appliance from the carton. Remove all protective plastic film, packing materials and accessories from the appliance before connecting performing any installation procedure.

Carefully read all instructions in this manual and the Installation Instruction Sheet packed with the appliance before starting any installation.

Read and understand all labels and diagrams attached to the appliance.

Carefully account for all components and accessories before discarding packing materials. Store all accessories in a convenient place for later use.

COMPONENTS

- 1 ea. DRIP TRAY
- 4 ea. ADJUSTABLE FEET

SETUP

Setup the appliance only on a firm, level, non-combustible surface. Verify local codes for requirements. Concrete, tile, terrazzo or metal surfaces are recommended.

Install the provided adjustable feet, one on each corner of the appliance, in the holes provided. Verify that the unit sits firmly on ALL FOUR FEET. Adjust as required to level the appliance. All four feet must be adjusted to firmly contact the countertop in order to prevent tipping.

ELECTRICAL INSTALLATION

Refer to the nameplate. Verify the electrical service power. Voltage and phase must match the nameplate specifications. Connecting the waffle baker to the wrong voltage can severely damage the unit or cause noticeably decreased performance.

This appliance requires a minimum of a 120V single phase 15 amp circuit with a properly installed and grounded NEMA5-15P receptacle.

IMPORTANT: Damage due to being connected to the wrong voltage is NOT covered by warranty.

SEASONING THE GRIDS

Lightly spray commercial waffle baker spray on both upper and lower grid.

Carefully close the upper grid. Turn the power switch on, then allow the waffle baker to pre-heat for at least 20 minutes.

Using the handle, lift the upper grid and lightly re-coat both upper and lower grid. Lower the upper grid.

The appliance is now ready for use.

OPERATION

GENERAL OPERATIONAL NOTES

Carefully read the description of the waffle baker operation on the specification sheet.

DO NOT attempt to perform any maintenance or service unless the waffle baker is disconnected from electrical power.

DO unplug the waffle baker before cleaning, servicing or performing any maintenance.

DO NOT use sharp objects or metal implements to clean the grids.

DO use a plastic spatula or plastic scouring pad to remove burned-on food product.

OPERATION

Turn power switch to the ON position.

With the grids in the "load" position and the upper grid closed, allow unit to preheat. Bake timer indicator light will flash until unit is up to temperature (20 - 30 minutes). Note that a soft clicking can be heard during pre-heat.

Using the handle, lift the upper grid. Spray a light coat of commercial waffle baker spray on the grids. Pour desired amount of Belgian Waffle Batter onto the lower grid.

Using the handle, carefully close the upper grid. Rotate the head assembly 180° clockwise until the detent is engaged. Rotating the head automatically activates the bake timer. The bake timer indicator light will glow. Allow waffle to bake in this inverted position.

At the end of the cook cycle, the buzzer sounds and the indicator light goes out. Rotate the head assembly 180° counter-clockwise. Raise the upper grid and remove the waffle.

Baking Recommendations:

Keep the grids closed when not in use to maintain temperature.

Use a soft bristle brush to lightly brush and clean baking debris from the grids between waffles.

Reseason grids every 3 - 4 waffles to guard against waffles sticking. This may be extended by adding oil or butter to the waffle batter.

Always use fresh batter that contains sufficient shortening. Add shortening as necessary, and do not store batter for extended periods.

Ensure a perfect, great-tasting Belgian waffle by cleaning and re-seasoning frequently. After every third waffle, and anytime the waffle baker has been left idle for over one-half hour, lightly spray grids with commercial waffle baker spray.

Never apply beeswax, paraffin or other such materials to the grids. Use only a quality commercial waffle baker spray.

Never use sharp implements (i.e. knives, forks, metal tongs) to remove waffles from the grid. Use a plastic spatula or plastic tongs.



CAUTION: HOT SURFACE

Exposed surfaces can be hot to the touch and may cause burns.

NOTE: The bake timer is factory set for 3 minutes. It is adjustable for .1 to 6 minutes.

See page 8 for timer adjustment procedure.

IMPORTANT:

At the end of the bake time the buzzer will sound briefly, and the bake timer light will go out. The buzzer is only a signal that the waffle is done. It does not turn the heating element on or off.

Remove the waffle promptly when the buzzer sounds.

OPERATION (ELECTRONIC UNITS) BWB1SE



CAUTION: HOT SURFACE

Exposed surfaces can be hot to the touch and may cause burns.

MAKING WAFFLES

Turn the unit on and allow to pre-heat for 15 minutes with the grids closed. Once the baker has reached proper temperature you can proceed as follows:

1. Brush on releasing agent, if needed
2. Lift the lid, pour in mix and close.
3. Start timer by pressing the start/stop pad.
4. When timer beeps, depress the start/ stop pad.
5. Remove waffle.
6. For next waffle repeat steps 1 through 5.

Setting the Time:

If necessary, the factory pre-set timer can be adjusted to satisfy individual preferences.



To increase time, depress and hold the “up” button. The start/ stop button can now be used to increase baking time.



To decrease time, depress and hold the “down” button. The “start/stop” button can now be used to decrease baking time.

IMPORTANT:

The timer bell will ring at the end of the cooking time. The timer bell is only a signal that the waffle is done. It does not turn the heating element on or off.

Remove the waffle promptly when the bell rings.

SETTING THE TEMPERATURE

If necessary, the factory pre-set temperature can be changed: To view the temperature, depress and hold “TEMP” button and press “START/STOP” button. Hold both buttons for 3 seconds for the pre-set temperature to be displayed.

To increase the temperature press “+” button; to decrease press “-” button.

To lock the temperature press the “START/STOP” button.

Changing the displayed temperature from “F” (Fahrenheit) to “C” (Celsius) -

Hold “TEMP” button and turn “OFF” and then “ON” the lighted switch on the front panel. To change back from “C” to “F”, repeat the same procedure. Setting the temperature is available in both modes “F” and “C”.

CLEANING INSTRUCTIONS



CAUTION: BURN HAZARD

Allow waffle baker to cool completely before cleaning.

IMPORTANT: DO NOT spill or pour water into controls.

DO NOT submerge appliance in water. This will damage internal components. Damage to internal components from water is NOT covered by warranty.

DO NOT use steel wool or metal scouring pads to clean appliance or drip tray.

Good sanitation is vital to the quality of the final food product. Be sure to clean in all corners and crevices where grease and other cooking debris can accumulate.

PREPARATION

Unplug appliance from electric power
Allow appliance to cool completely.

FREQUENCY

Daily

TOOLS

Plastic Scouring Pad, Soft-Bristled Fiber Brush
Mild Detergent, Non-Abrasive Cleanser
Clean Soft Cloth / Sponge

CLEANING

1. Allow the waffle baker to cool to room temperature.
2. Clean grids by using a soft-bristle brush to remove any remaining cooking residue.
3. Clean the outside of the Waffle Baker by wiping it with a soft, clean cloth dampened with warm water and a mild detergent.
NEVER USE AN ABRASIVE CLEANSER.
4. Rinse by wiping with a soft, clean cloth dampened with clean water. Allow to air dry.
5. Re-season the grids after cleaning by spraying with a commercial waffle baker spray.

Procedure complete

CLEANING INSTRUCTIONS (continued)

PREPARATION

Unplug appliance from electric power
Allow appliance to cool completely.

FREQUENCY

As needed

TOOLS

Commercial Carbon Cleaner
1" Bristle Brush, Stiff Fiber Brush
Clean Soft Cloth / Sponge

REMOVE CARBONIZATION FROM GRIDS

1. Allow the waffle baker to cool to room temperature.
2. Liberally apply a commercial carbon cleaning solution to the grids with a new 1" bristle brush. Be extremely careful when applying carbon cleaning solution to the grid surfaces. DO NOT spill any carbon cleaning solution or other caustic cleaning product on yourself or adjacent work surfaces.
IMPORTANT: Read and follow all manufacturer's instructions when using commercial carbon cleaners. Carbon cleaner can be hazardous. It is the operator's responsibility to use the product safely, in the manner directed by the carbon cleaner manufacturer.
3. Close the upper grid and allow the appliance to stand for several hours, or overnight, depending upon the extent of the carbonization.
4. Thoroughly remove the carbon cleaning solution and black residue using a fiber brush. Wipe down the grid surfaces carefully and thoroughly with water so that no carbon cleaning solution remains on the grids.
IMPORTANT: Make certain water and cleaner are not allowed to get into internal parts. The waffle baker will be damaged if internal components are allowed to get wet.

5. Clean the outside of the Waffle Baker by wiping it with a soft, clean cloth dampened with warm water and a mild detergent. NEVER USE AN ABRASIVE CLEANSER.
6. Rinse by wiping with a soft, clean cloth dampened with clean water. Allow to air dry.
7. Re-season the grids after cleaning by spraying with a commercial waffle baker spray.

Procedure complete

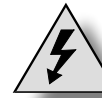


CAUTION: CHEMICAL BURN HAZARD

Waffle baker cleaner may cause serious burns on contact.

Wear protective clothing and safety glasses when using waffle baker cleaner.

Carefully read and follow directions and warnings on the label.



CAUTION: ELECTRIC SHOCK HAZARD

DO NOT submerge the waffle baker in water. If internal components become wet, the operator may suffer electrical shock, and the waffle baker will be damaged.

Use this procedure to clean any black residue (carbonization) remaining on the grids after the daily cleaning. Grids must be cleaned to remove the black residue, then re-seasoned, to ensure optimal performance.

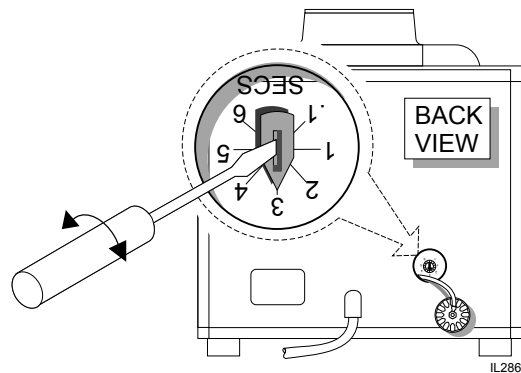
MAINTENANCE INSTRUCTIONS

NOTE: The necessity to increase baking time may be due to carbon build-up on the grids. Always clean and de-carbonize the grids prior to adjusting the timer.

TIMER ADJUSTMENT (NON-ELECTRONICALLY CONTROLLED UNITS)

TOOLS REQUIRED: Small Flat Blade Screwdriver

1. Remove the hole plug from the rear panel of the Waffle Baker.
DO NOT remove the hole plug from the attached grounding wire.
2. Using the screwdriver, rotate the adjusting knob: clockwise to increase time, or counter-clockwise to decrease time.
Time is adjustable from 0.1 minutes to 6.0 minutes.
3. Replace hole plug.



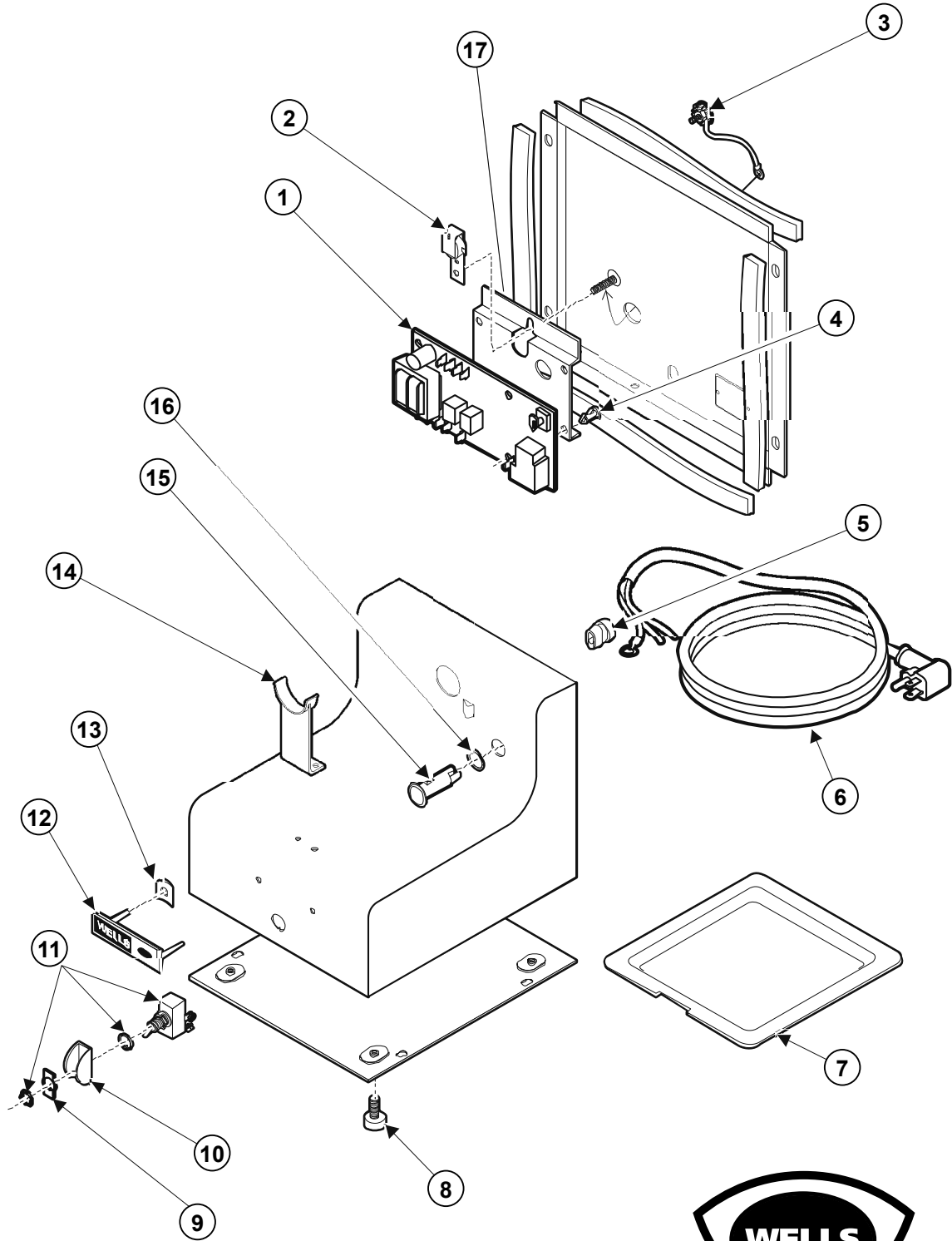
TROUBLESHOOTING

SYMPTOM	POSSIBLE CAUSE	SUGGESTED REMEDY
Will not heat	Power cord not plugged in, or circuit breaker tripped	Establish main power, Be sure appliance is plugged in
	Power switch off	Turn power switch on
	Internal component damage	Contact an authorized Wells Service Agency for repairs.
Does not maintain temperature	Excessive carbonization of grids	Decarbonize grids
	Internal component damage	Contact an authorized Wells Service Agency for repairs.
Buzzer pulses	Internal component damage (open temp probe)	Contact an authorized Wells Service Agency for repairs.

NOTE: There are no user serviceable components in the cabinet or cooking grids. In all cases of damage or malfunction, contact your Authorized Wells Service Agency for repairs.

EXPLODED VIEW: BWB-1S

BWB-1S CABINET



Model: BWB-1S
BELGIN WAFFLE BAKER

PL221



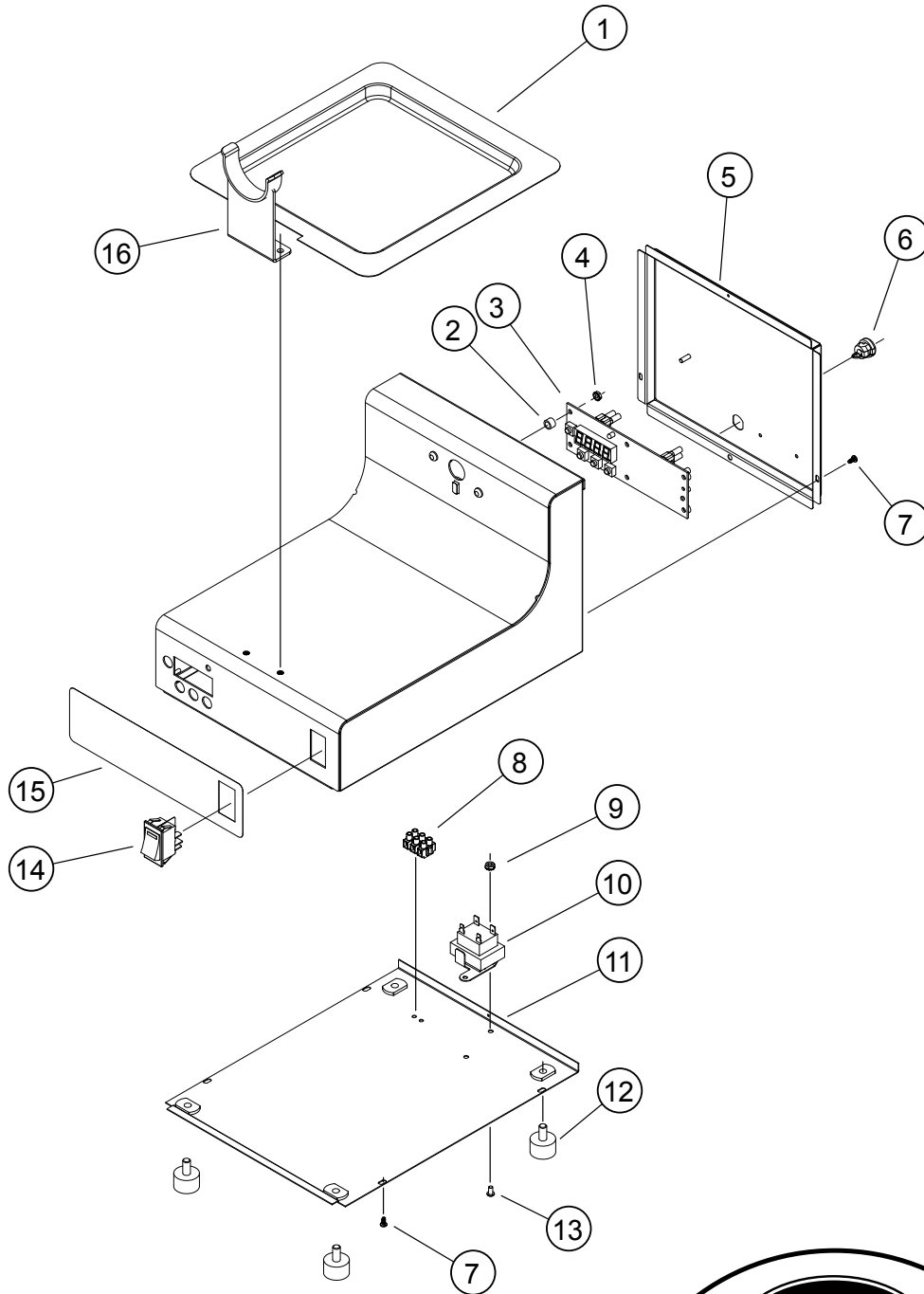
IL1796 Rev. B 5/10/12

M211 2M-307154 Owners Manual for BWB-1S Belgian Waffle Baker

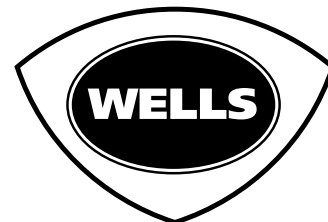
PARTS LIST: BWB-1S

BWB-1S BELGIAN WAFFLE BAKER CABINET			
Fig No	Part No	Qty	Description
1	2P-306682	1	TIME/TEMP CONTROL BWB-1S
2	2J-40529	1	BUZZER HMP
3	B8-41064	1	ASSY HOLE PLUG
4	67-43565	4	STAND OFF PCB 1/2 HGT BWB
5	2K-31217	1	STRAIN RELIEF 90DEG HEYCO
6	2E-35539	1	CORD SET 120V 15A 16GA 4F
7	B8-42555	1	TRAY DRIP BWB-1
8	2A-40564	4	FOOT RUBBER 5/16-18X5/8
9	2E-33192	1	PANEL ON & OFF SWITCH
10	Z1-70-07-0343	1	GUARD SWITCH TOGGLE BWB-1
11	2E-44904	1	SWITCH TOGGLE W/SEAL 125
12	2M-31239	1	LOGO WELLS DIECAST RECTAN
13	2C-31038	2	RETAINER CLIP TINNEMAN
14	B8-42028	1	BRKT ASSY SUPPORT BWB-1
15	2J-40758	1	LIGHT SIGNAL RED 120V MDB
16	2I-44890	1	SEAL O-RING 9/16IN OD
17	B8-43563	1	BRKT TIMER BWB1S ROHS

EXPLODED VIEW: BWB-1SE



Model: BWB1SE - Body Assembly
Electronic Belgian Waffle Baker



SK2807 Rev. - 8/26/14

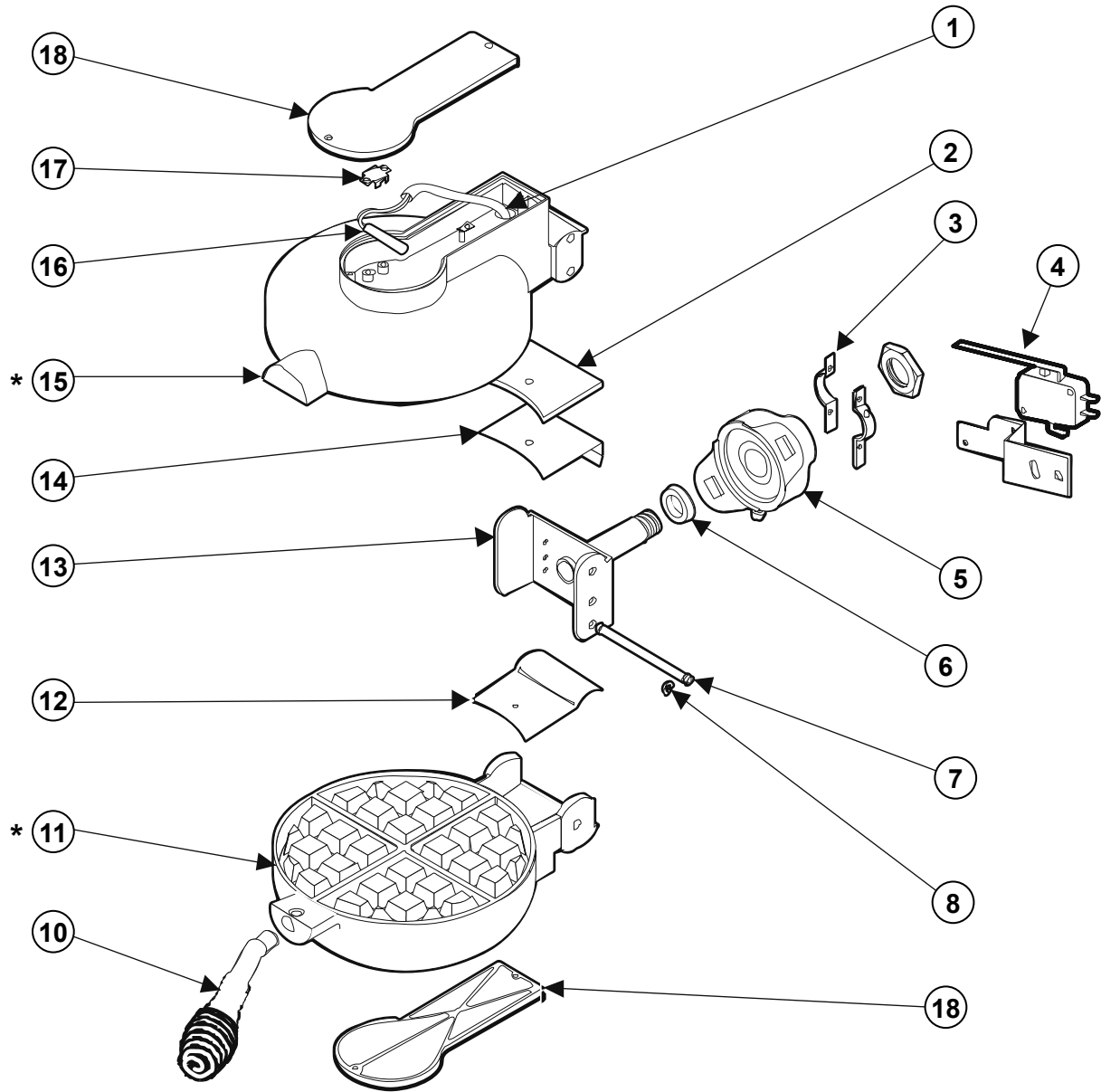
M211 2M-307154 Owners Manual for BWB-1S Belgian Waffle Baker

PARTS LIST: BWB-1SE

BWB-1SE BELGIAN WAFFLE BAKER CABINET				
Fig No.	Part Number	Qty	Description	Application
1	B8-42555	1	TRAY DRIP BWB-1	
2	2K-Z1971	6	SPACER .257X.75X.25 NYLON	
3	2J-Z7497	1	TIMER/TEMP CONTROL	
4	2C-200200	6	NUT, 6-32 HEX	
5	B8-Z18949	1	PANEL-REAR BWB1SE	
6	2K-70648	1	STRAIN RELIER SMALL	230EU, 230UK, KOR
	2K-7889		BUSHING HEYCO SR-11-2	
7	2C-33935	9	SCREW 6ABX5/16 PH PAN SMS	
8	2E-Z5375	1	TERMINAL BLOCK-3 POLE	
9	2C-31053	2	NUT 8-32 KEPS MS NICKEL	
10	2E-05-07-0350	1	TRANSFORMER 230V/10V 6VA	240V, 230EU, 230UK, KOR
	2E-05-07-0351		TRANSFORMER 115/10V 6VA	120V
11	B8-42003	1	COVER BOTTOM BWB-1 ROHS	
12	2A-40564	4	FOOT RUBBER 5/16-18X5/8 M	
13	2C-31715	2	SCREW 8-32X5/16 PH RD HD	
14	2E-35127	1	SWITCH RKR PLSTC,AMBER LT	
15	2M-Z19018	1	OVERLAY,TIME/TEMP BWB1SE	
16	B8-42028	1	BRKT ASSY SUPPORT BWB-1	
NI	2E-35539	1	CORD SET 120V 15A 16GA 4F	120V
	2E-35540		CORD SET 6-15P 16/3W 4FT	240V
	2E-72920		CORD & CAP EURO 3 COND CE	230EU, KOR
	K3-WL0401		CORD ASSY UK 48" #8RNG	230UK
NI	2M-Z18938	1	LABEL-WIRE DIA BWB1SE-120	120V
	2M-Z18939		LABEL-WIRE DIA BWB1SE-240	240V, 230EU, 230UK, KOR

EXPLODED VIEW: BWB-1S

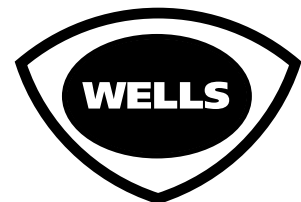
BWB-1S GRIDS



** If elements are shorten / open, replace grid assy*

Model: BWB-1S
BELGIN WAFFLE BAKER GRIDS

PL221



IL1797 Rev. D 9/02/15

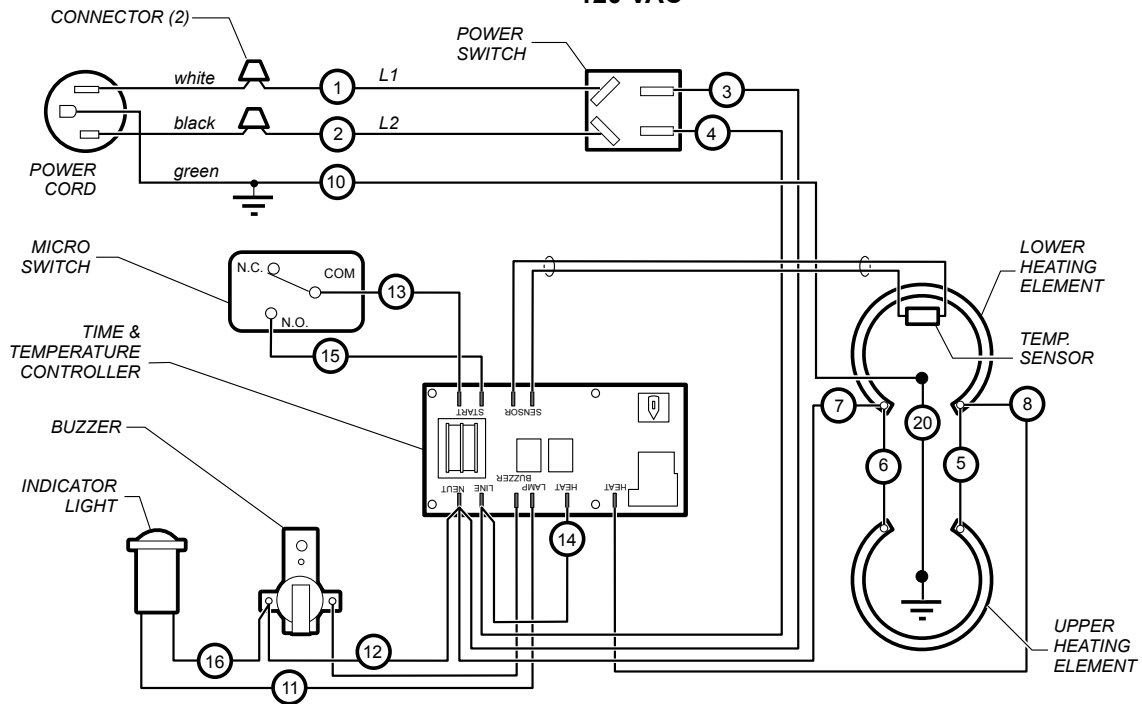
M211 2M-307154 Owners Manual for BWB-1S Belgian Waffle Baker

PARTS LIST: BWB-1S

BWB-1S/E BELGIAN WAFFLE BAKER GRID				
Fig No	Part No	Qty	Description	Application
1	B8-44201	1	SLEEVING 8.5IN BWB-1P	
2	2A-303523	1	DRIP GUIDE BWB-1	
3	B8-44901	2	ACTUATOR TIMER SWITCH	BWB1S-120V
4	2E-44887	1	SWITCH MICRO 120V 15A	BWB1S-120V
5	2P-42232	1	BEARING BWB-1	
6	2A-46177	1	SPACER BRONZE BWB-1	
7	2A-42018	1	SHAFT PIVOT BWB-1	
8	2C-30222	2	RETAINER E-RING .179 ID	
10	B8-42257	1	HANDLE ASSY BWB-1	
11	2F-42008UL	1	GRID UPPER BWB-1 TUMBLED	
	2F-Z19079		GRID UPPER NONSTICK BWB-1	BWB1SE-KOR
12	B8-42023	1	COVER WIRING UPPER PLATE	
13	WS-62006	1	HOUSING ASSY PIVOT BWB-1	
14	B8-42031	1	COVER WIRING LOWER BWB-1	
15	2F-42007UL	1	GRID LOWER BWB-1 TUMBLED	
	2F-Z19078		GRID LOWER NONSTICK BWB-1	BWB1SE-KOR
16	2J-306681	1	PROBE TEMP BWB-1S	BWB1S-120V
	2J-Z16743		PROBE-TEMP-RTD-2D	BWB1SE
17	DD-64885	1	HOLDER PROBE BWB-1S	
18	2L-42029	1	COVER LOWER BWB-1	

WIRING DIAGRAM

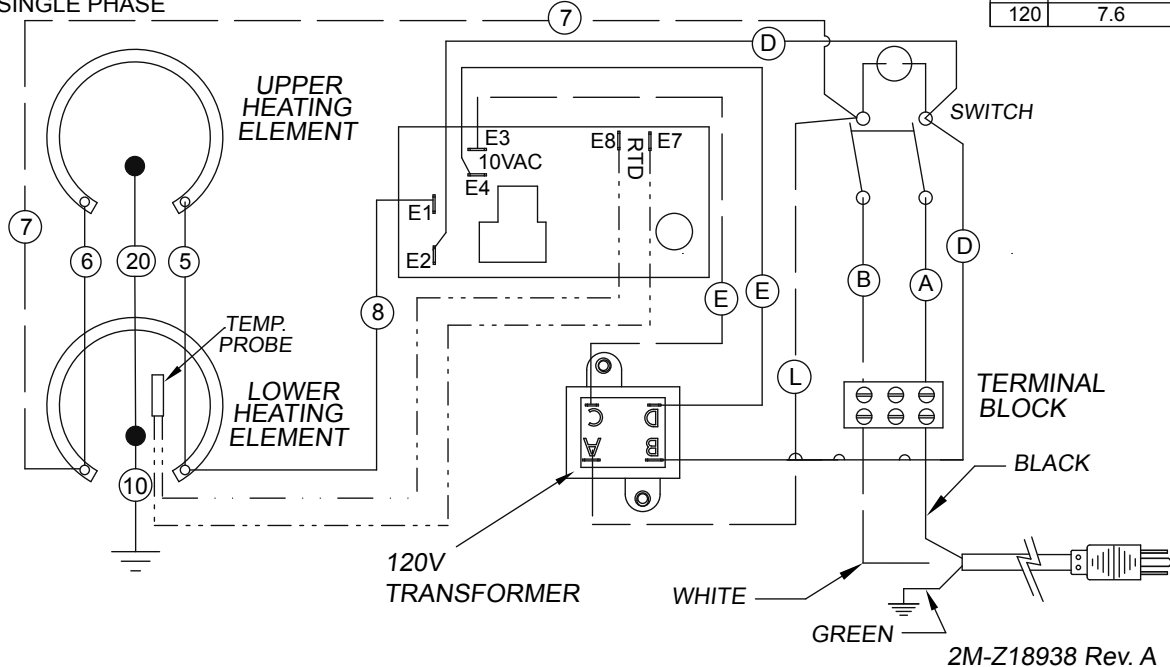
WIRING DIAGRAM FOR BWB-1S 120 VAC



VOLTS	AMPS 1ph	
120	7.5	50/60 Hz

p/n 2M-306655 Rev.(-)

120V MODEL BWB-1SE, BELGIAN WAFFLE BAKER SINGLE PHASE



VOLTS	NOMINAL AMPS
120	BWB-1SE 7.6

2M-Z18938 Rev. A

PARTS & SERVICE

DESCRIPTION

PART NO.

DRIP TRAY, BWB-1S

B8-42555

RUBBER FEET (pk 4)

WS-21657

IMPORTANT: Use only factory authorized service parts and replacement filters.

For factory authorized service, or to order factory authorized replacement parts, contact your Wells authorized service agency, or call:

Wells Manufacturing
10 Sunnen Dr.
St. Louis MO 63143 USA

Service Dept.
phone: (314) 678-6314
fax: (314) 781-2714

Service Parts Department can supply you with the name and telephone number of the WELLS AUTHORIZED SERVICE AGENCY nearest you.

CUSTOMER SERVICE DATA

please have this information available if calling for service

RESTAURANT _____ LOCATION _____

INSTALLATION DATE _____ TECHNICIAN _____

SERVICE COMPANY _____

ADDRESS _____ STATE _____ ZIP _____

TELEPHONE NUMBER (____)____-_____

EQUIPMENT MODEL NO. _____

EQUIPMENT SERIAL NO. _____

VOLTAGE (check one) 120VAC



Wells Bloomfield proudly supports CFESA
Commercial Food Equipment Service Association

SERVICE TRAINING - QUALITY SERVICE



CUSTOMER SATISFACTION



WELLS BLOOMFIELD, LLC
10 Sunnen Dr., St. Louis, MO 63143
telephone: 314-678-6314
fax: 314-781-2714
www.wellsbloomfield.com