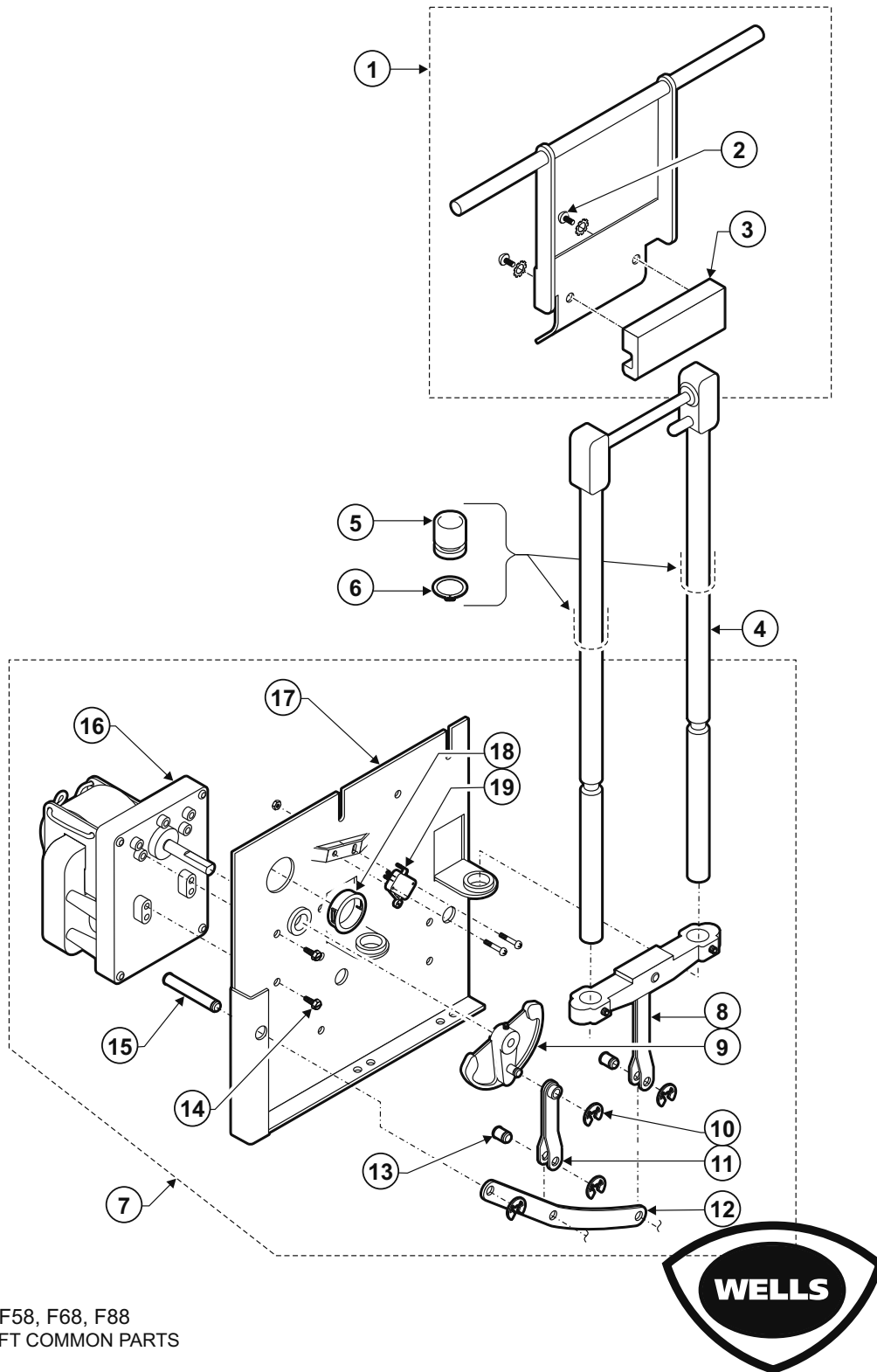


EXPLODED VIEW: AUTOLIFT COMMON PARTS

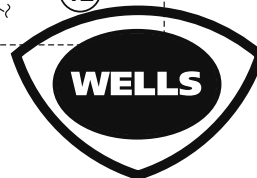
AUTOLIFT COMMON PARTS



Model: F58, F68, F88
AUTOLIFT COMMON PARTS

PL302

IL1778 Rev. A 5/19/09



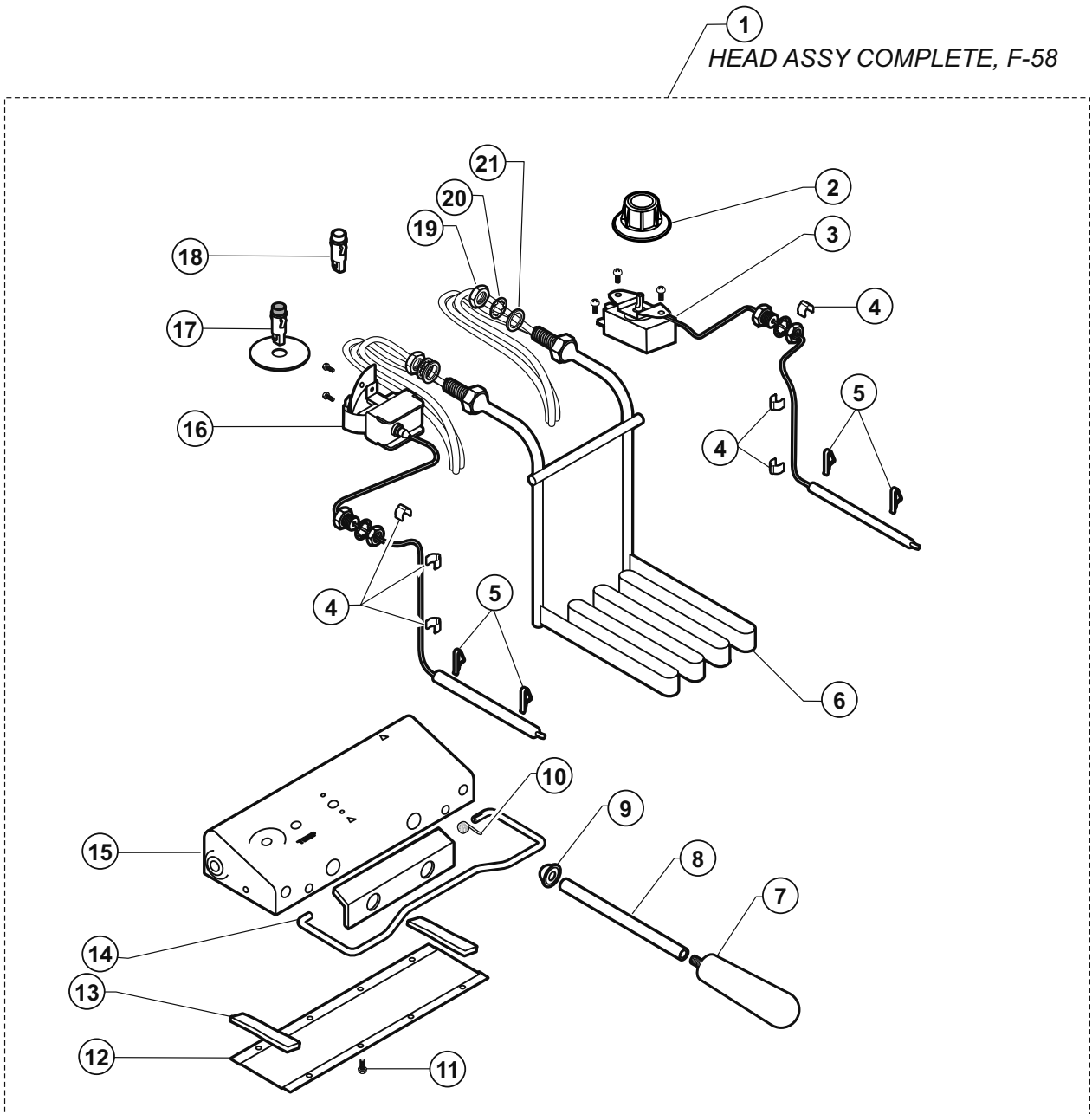
M302 p/n 2M-307589 Owners Manual Electric Countertop Autolift Fryers

PARTS LIST: AUTOLIFT COMMON PARTS

| F58 F68 F88 ELECTRIC FRYER\ AUTOLIFT COMMON PARTS | | | |
|--|----------------|------------|--------------------------|
| Fig No | Part No | Qty | Description |
| 1 | E7-WL0035 | 1/2 | LIFT BRACKET ASSEMBLY |
| 2 | 2C-35487 | AR | SCREW 8-32X5/16 PH TR HD |
| 3 | DD-505658 | 1/2 | BLOCK PIVOT SS F-58 |
| 4 | 2A-31146 | 1/2 | ROD LIFT BSKT ASSY |
| 5 | 2I-30231 | 2 | SEAL OIL PTFE LARGE |
| 6 | 2I-31145 | 2 | RETAINER OIL SEAL |
| 7 | WS-50850 | 1/2 | MOTOR LIFT ASSY |
| 8 | E7-30543 | 1/2 | ARM CROSS ASSY |
| 9 | 2A-30207 | 1/2 | CRANK CASTING SHORT |
| 10 | 2C-30222 | 4/8 | RETAINER E-RING .179ID |
| 11 | E7-30878 | 1/2 | ARM CRANK LEVER ASSY |
| 12 | 2D-30215 | 1/2 | BEARING LEVER - FRYER |
| 13 | 2A-30876 | 2/4 | PIN LEVER MOTOR ASSY. |
| 14 | 2C-35530 | 4/8 | SCREW 8-32X3/8PH RD |
| 15 | 2A-30205 | 1/2 | PIN PIVOT |
| 16 | 2U-30233 | 1/2 | MOTOR LIFT ELECT FRYER |
| 17 | E7-31259 | 1/2 | BRKT AUTOLIFT ROHS |
| 18 | 2K-31040 | 1/2 | BUSHING HEYCO 7/8 OD |
| 19 | 2E-30198 | 1/2 | SWITCH UNIMAX |

EXPLODED VIEW : F58 FRY HEAD COMPONENTS

F58 COUNTERTOP SINGLE-HEAD AUTOLIFT FRYER - FRY HEAD COMPONENTS



Model: F58 COUNTERTOP SINGLE-HEAD AUTOLIFT FRYER
 FRY HEAD COMPONENTS

PL302



IL1779 Rev. A 5/19/09

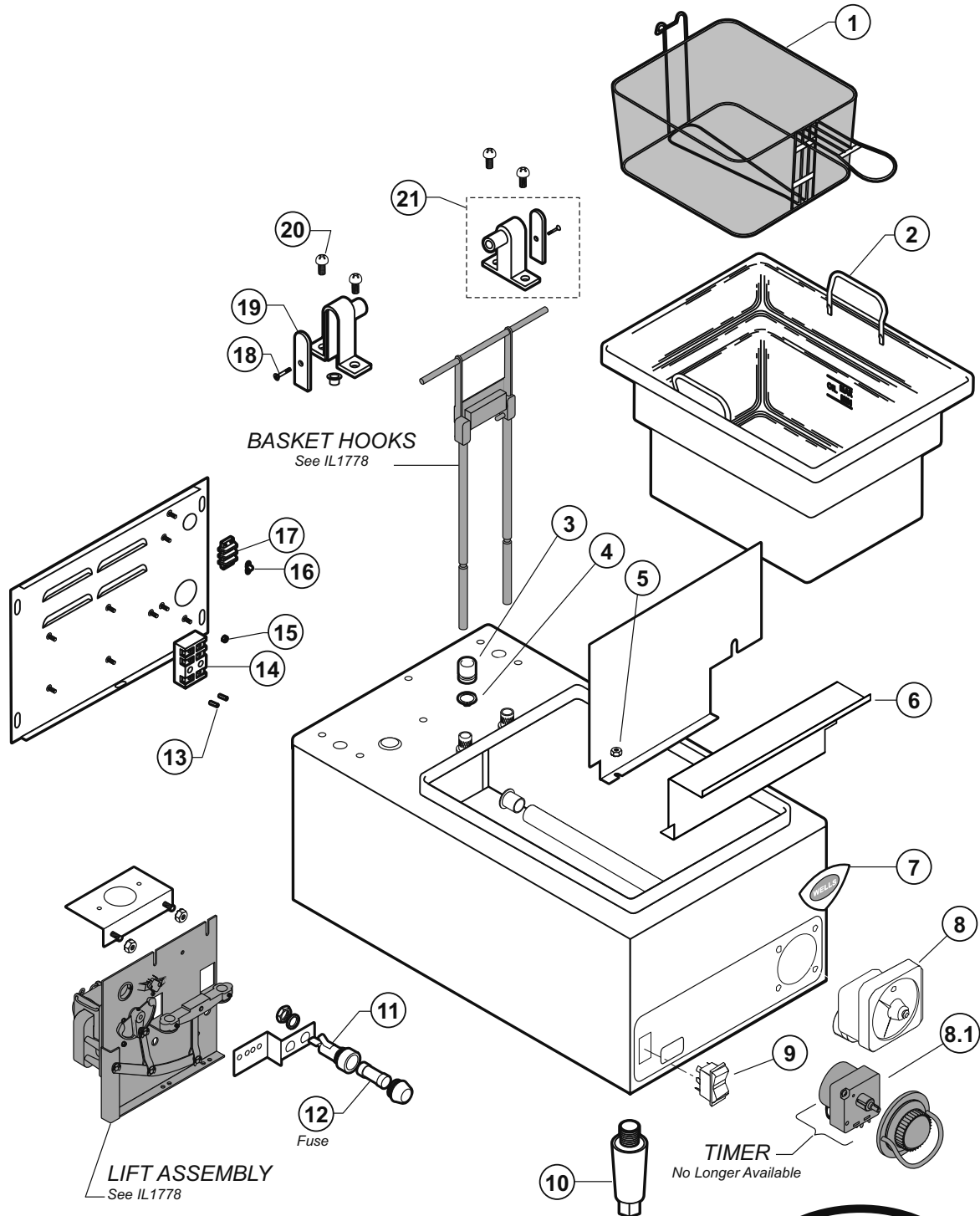
M302 p/n 2M-307589 Owners Manual Electric Countertop Autolift Fryers

PARTS LIST: F58 FRY HEAD COMPONENTS

| F58 COUNTERTOP SINGLE-HEAD ELECTRIC FRYER\ FRY HEAD COMPONENTS | | | |
|---|----------------|------------|---------------------------|
| Fig No | Part No | Qty | Description |
| 1 | WS-506902 | 1 | KIT RETRO HEAD ASSY 208V |
| | WS-506903 | | KIT RETRO HEAD ASSY 240V |
| 2 | 2R-37882 | 1 | KNOB CONTROL ASSY AUTOFRY |
| 3 | WS-55510 | 1 | THERMO CONTROL FRYER |
| 4 | 2C-30157 | 6 | CLIP CAPILLARY |
| 5 | 2C-49689 | 4 | CLAMP BULB SS |
| 6 | 2N-42842UL | 1 | ELEM 208V 5750W |
| | 2N-42866UL | | ELEM 240V 5750W |
| 7 | 2R-30211 | 1 | HANDLE LIFT GRAY |
| 8 | 2K-33358 | 1 | ADAPTER HANDLE F58 |
| 9 | 2P-34452 | 1 | CAP PUSH ON TYPE BASKET |
| 10 | 2P-32428 | 1 | SPRING SUPPORT ROD |
| 11 | 2C-35566 | 10 | SCREW 6-32X1/4 PH TR HD |
| 12 | DD-31202 | 1 | COVER CONTROL BOX S/SAF |
| 13 | 2I-35747 | 2 | GASKET FRYER HEAD 3/8X3 |
| 14 | 2A-32427 | 1 | ROD SUPPORT SHORT HEAD |
| 15 | E7-30464 | 1 | BOX CONTROL ASSY |
| 16 | WS-58656 | 1 | THERMO HI-LIMIT MAN RESET |
| 17 | 2J-31157 | 1 | LIGHT SIGNAL RED |
| 18 | 2J-30516 | 1 | LIGHT SIGNAL AMBER |
| 19 | 2C-30172 | 2 | NUT 7/8-14 HEX |
| 20 | 2I-Z12311 | 2 | GASKET -FIBER WASHER |
| 21 | 2C-30176 | 2 | WASHER LOCK FTG TUBE FRAM |
| NI | WS-Z21128 | 1 | RELAY SERVICE KIT |

EXPLODED VIEW: F58 CABINET COMPONENTS

F58 COUNTERTOP SINGLE-HEAD AUTOLIFT FRYER - CABINET COMPONENTS



Model: F58 Countertop Single Head Autolift Fryer
Cabinet Components

PL302



IL1780 Rev. B 11/03/10

M302 p/n 2M-307589 Owners Manual Electric Countertop Autolift Fryers

PARTS LIST: F58 CABINET COMPONENTS

| F58 COUNTERTOP SINGLE-HEAD ELECTRIC FRYER\ CABINET COMPONENTS | | | |
|--|----------------|------------|--------------------------------|
| Fig No | Part No | Qty | Description |
| 1 | 2B-43688 | 2 | BASKET WIRE TWIN F58 F88 |
| | 2B-43689 | 1 | BASKET WIRE F55, SINGLE |
| 2 | 2D-301344 | 1 | FRY POT "F" SERIES FRYERS |
| 3 | 2I-30231 | 2 | SEAL OIL PTFE LARGE |
| 4 | 2I-31145 | 2 | RETAINER OIL SEAL |
| 5 | 2C-31053 | 4 | NUT 8-32 KEPS MS NICKEL |
| 6 | E7-WL0144 | 1 | BAFFLE ASSY F58 |
| 7 | 2M-300534 | 1 | TRADEMARK DOMED LABEL |
| 8 | 2P-Z13854 | 1 | TIMER 40MIN 240V DPST |
| | PS-WL0154 | 1 | TIMER RETROFIT KIT 48469 |
| 8.1 | PS-WL0149 | 1 | TIMER RETROFIT KIT 30227 |
| 9 | 2E-74098 | 1 | SWITCH 2 POLE 50A 50/60HZ |
| 10 | 2R-Y5092 | 4 | FEET ADJ 4GRAY 3/8-16, PLASTIC |
| | 2A-35483 | | FEET ADJ METAL 4IN |
| 11 | 2E-34769 | 1 | FUSEHLDR HPG-EE 10A 240V |
| 12 | 2E-34768 | 1 | FUSE SC-10 A0A 300V |
| 13 | 2C-41974 | 2 | NUT 8-32 HEX 7/8 LONG ALU |
| 14 | 2E-33068 | 1 | TERM BLOCK FLAME SENSOR |
| 15 | 2C-35736 | 1 | NUT 8-32 HEX KEPS MS GREEN |
| 16 | 2E-34005 | 1 | JUMPER FLAME SENSOR TERM |
| 17 | 2E-33068 | 1 | TERM BLOCK FLAME SENSOR |
| 18 | 2C-31717 | 2 | SCREW 8-32X7/8 PH FL ROLO |
| 19 | 2A-32806 | 2 | COVER PIVOT BRKT TUMBLED |
| 20 | 2C-33890 | 4 | SCREW 12-24X3/4PH PAN ROL |
| 21 | WS-50183 | 2 | HINGE BRACKET END |