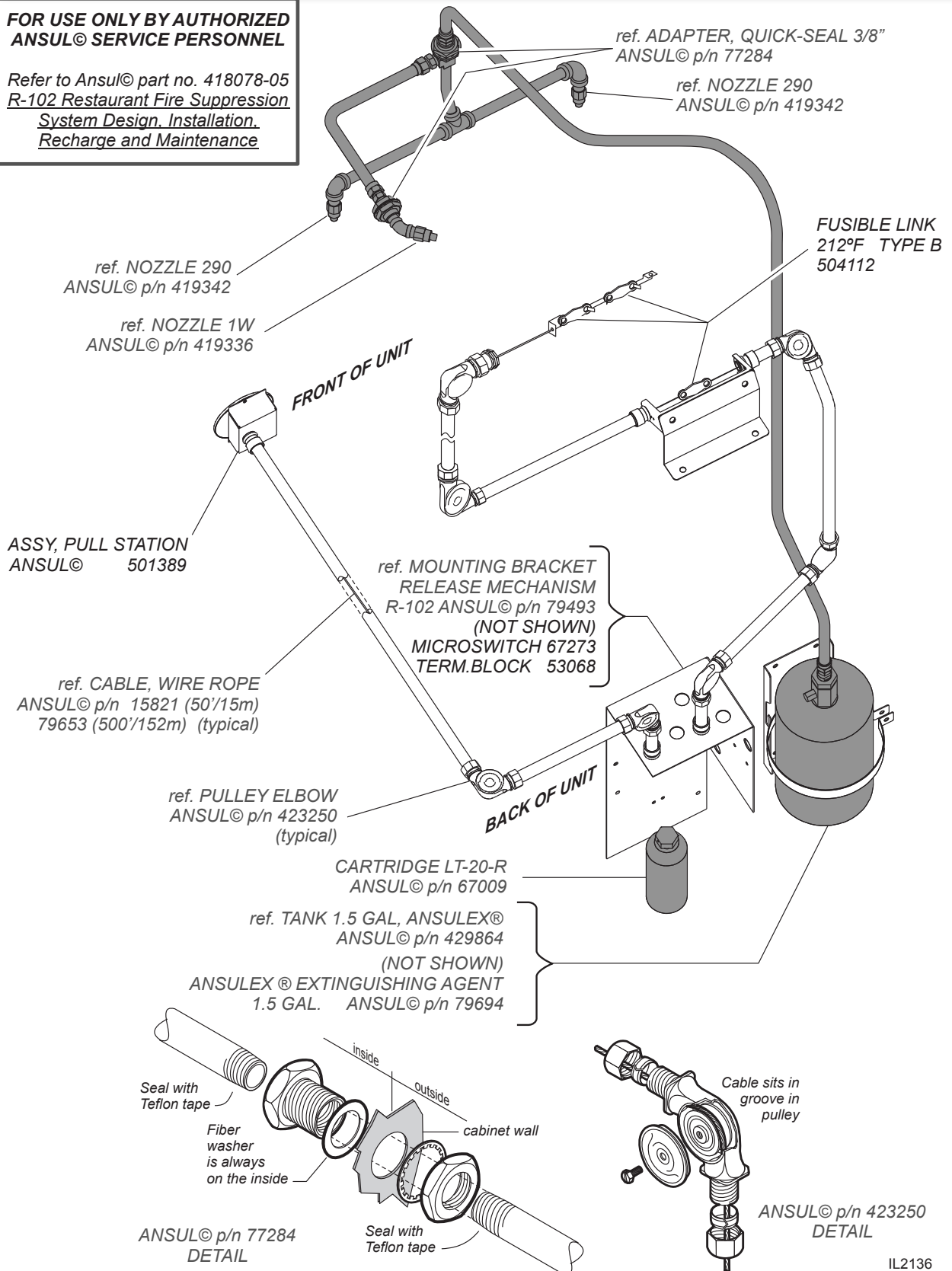


ANSUL® SYSTEM COMPONENTS

**FOR USE ONLY BY AUTHORIZED
ANSUL® SERVICE PERSONNEL**

Refer to Ansul® part no. 418078-05
R-102 Restaurant Fire Suppression
System Design, Installation,
Recharge and Maintenance

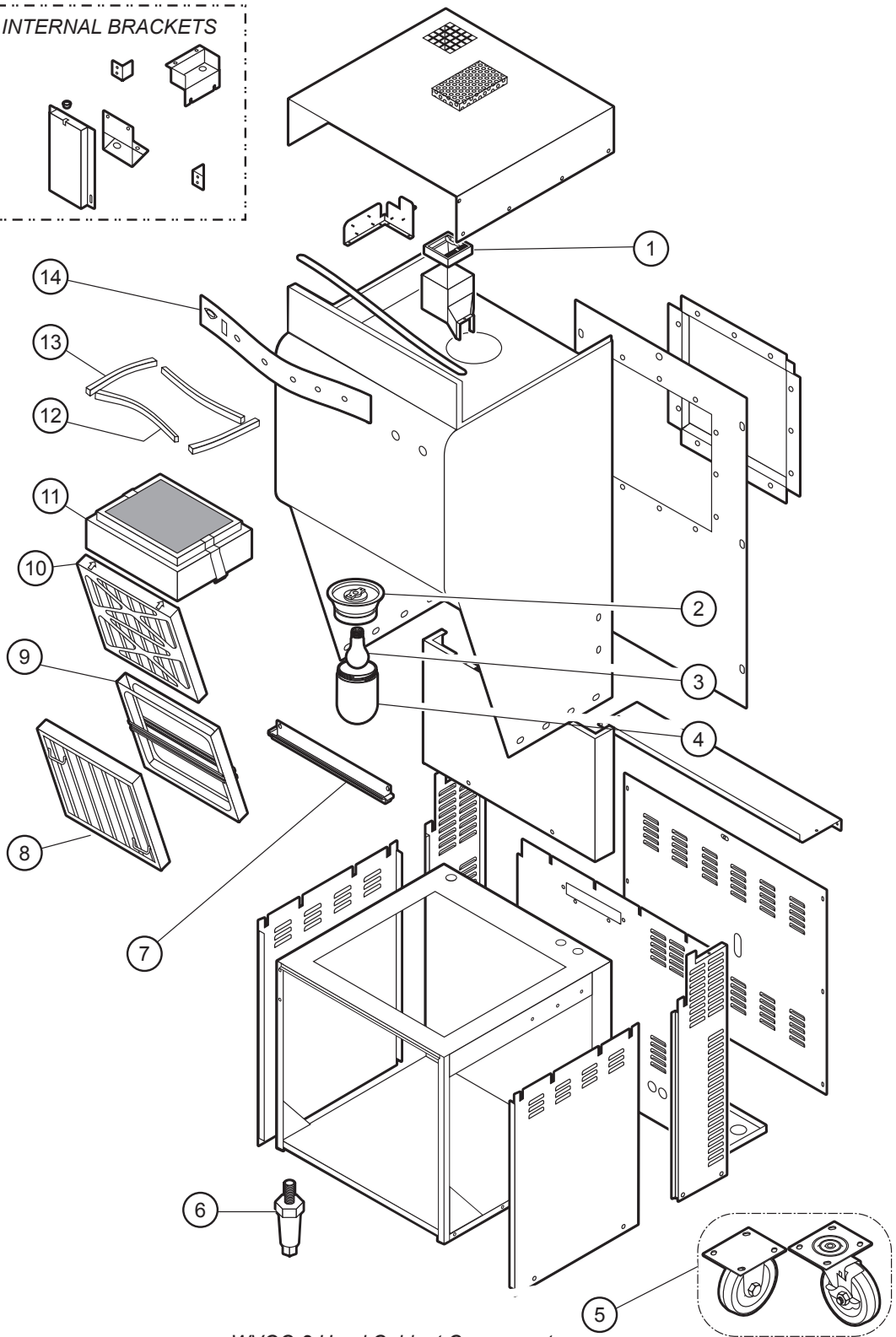
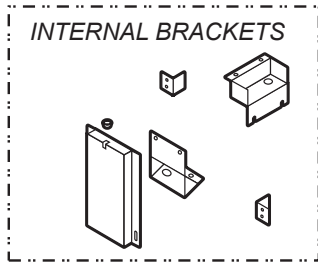


505 p/n 2M-304963 Owners Manual WVOC-2 Combination Cook Center

IL2136

EXPLODED VIEW & PARTS LIST

HOOD CABINET COMPONENTS



WVOC-2 Hood Cabinet Components

IL1963a, PL505

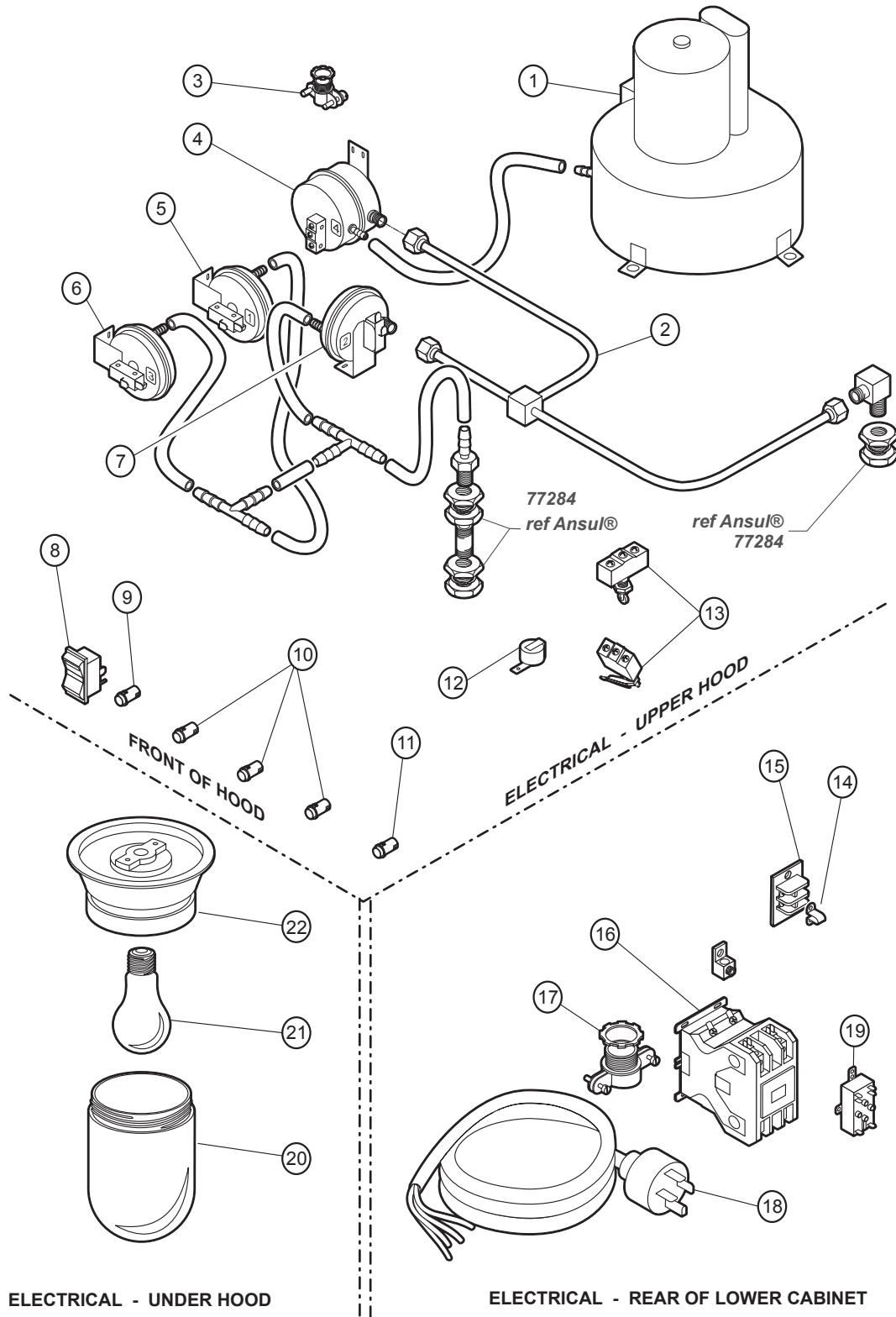
EXPLODED VIEW & PARTS LIST

HOOD CABINET COMPONENTS

Model: WVOC2 Hood Cabinet Components			
Fig No.	Part No	Description	Application
1	2V-301187	DAMPER 280°F	
2	2E-305098	LIGHT HOUSIGN VCS HOOD	
3	2S-305100	LIGHT BULB / 100W-230V FROSTED	
4	2Q-30509	GLASS GLOBE VCS HOOD	
5	5E-20804	CASTER ASSY 2FIX, 2 SWVL	
6	2A-45598	LEG ADJUST 6 IN SS	
7	M3-304405	TRAY GREASE DRIP HOOD	
8	2I-302580	FILTER BAFFLE	
9	M3-302688	PREFILTER CAGE	
10	2I-302579	FILTER PRE HOOD UNIVERSAL	
11	M3-302775	FILTERPACK ASSY UNIV HOOD	
12	WS-502773	GASKET SILICONE .25X.5X18.5	
13	1P-302749	TAPE SILICONE GRAY VCS	Sold By The Foot
14	2M-302782	FACEPLATE FRONT PANEL UNIVERSAL	

EXPLODED VIEW & PARTS LIST

HOOD ELECTRICAL & VACUUM COMPONENTS



IL1964a, PL505

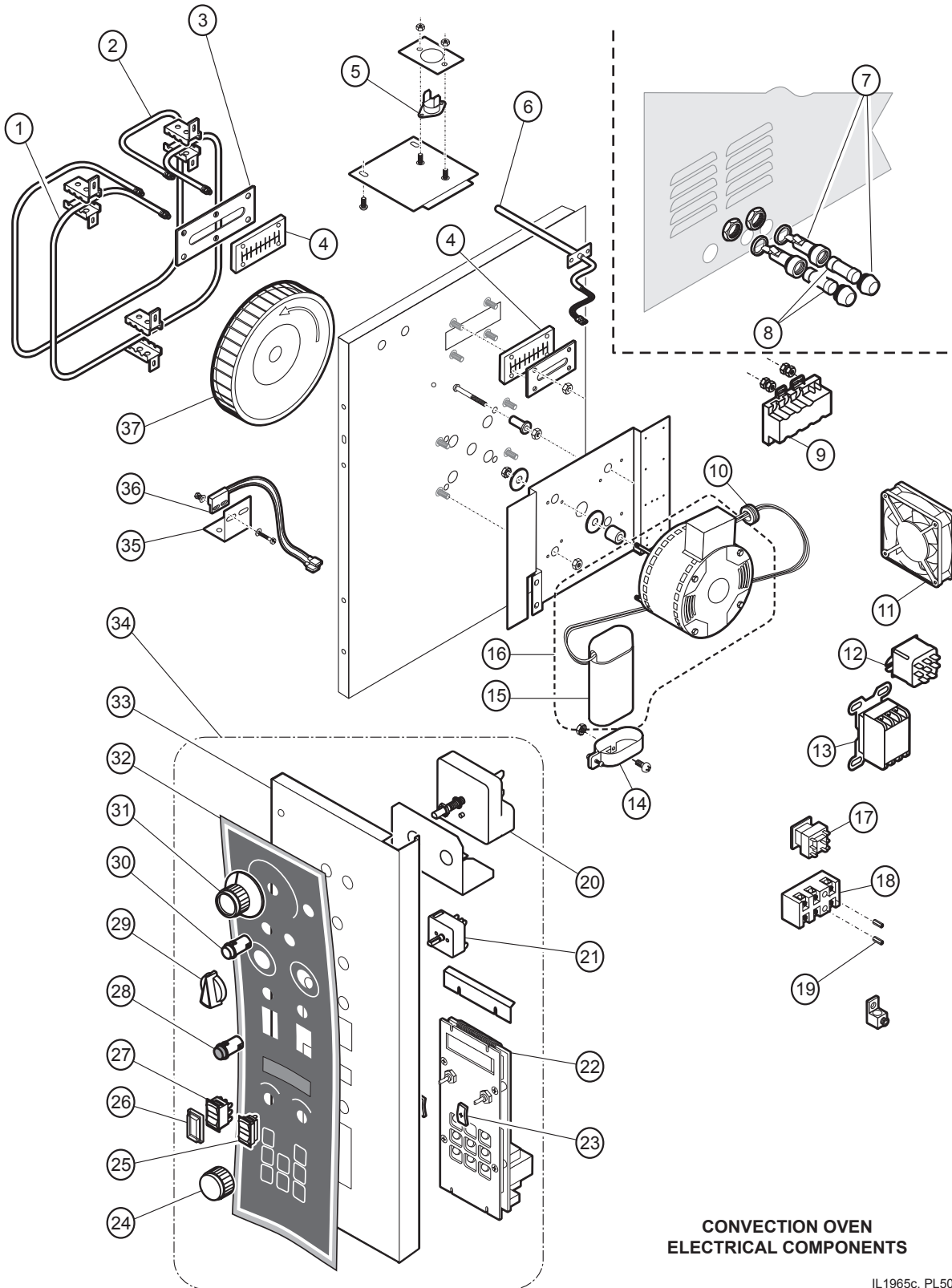
EXPLODED VIEW & PARTS LIST

HOOD ELECTRICAL & VACUUM COMPONENTS

Model: WVOC2 Hood Electric & Vacuum Components		
Fig No.	Part No	Description
1	2U-302584	BLOWER ASSY UNIVERSAL
2	N1-307594	TUBING ASY VACUUM UNIV
3	2K-37748X	FTG CONDUIT STRAIGHT 3/8
4	2E-302593	SWITCH VACUUM #4
5	2E-302590	SWITCH VACUUM #1
6	2E-302592	SWITCH VACUUM #3
7	2E-302591	SWITCH VACUUM #2
8	2E-70395	SWITCH ROCKER 240V 20A
9	2J-35697	PILOT LT GREEN 250V
10	2J-30516	LIGHT SIGNAL AMBER
11	2J-31157	LIGHT SIGNAL RED
12	2J-44834	BUZZER 220V ROHS
13	2E-300407	SWITCH MANUAL ADVANCE ROT
14	2E-34005	JUMPER FLAME SENSOR
15	2E-33068	TERM BLOCK FLAME SENSOR
16	2E-Z15704	CONTACTOR 75A 3 POLE 208/240V
17	2K-304420	STRAIN RELIEF 1 1/4NPT
18	M3-303130	CORD SET 60AMP 3 PHASE W/STRAIN RELIEF
19	2E-44514	RELAY 208-240V COIL
20	2Q-305099	GLASS GLOBE VCS HOOD
21	2S-305100	LIGHT BULB/100W-230V, FROSTED
22	2E-305098	LIGHT HOUSING VCS HOOD

EXPLODED VIEW & PARTS LIST

CONVECTION OVEN ELECTRICAL COMPONENTS



**CONVECTION OVEN
ELECTRICAL COMPONENTS**

IL1965c, PL505

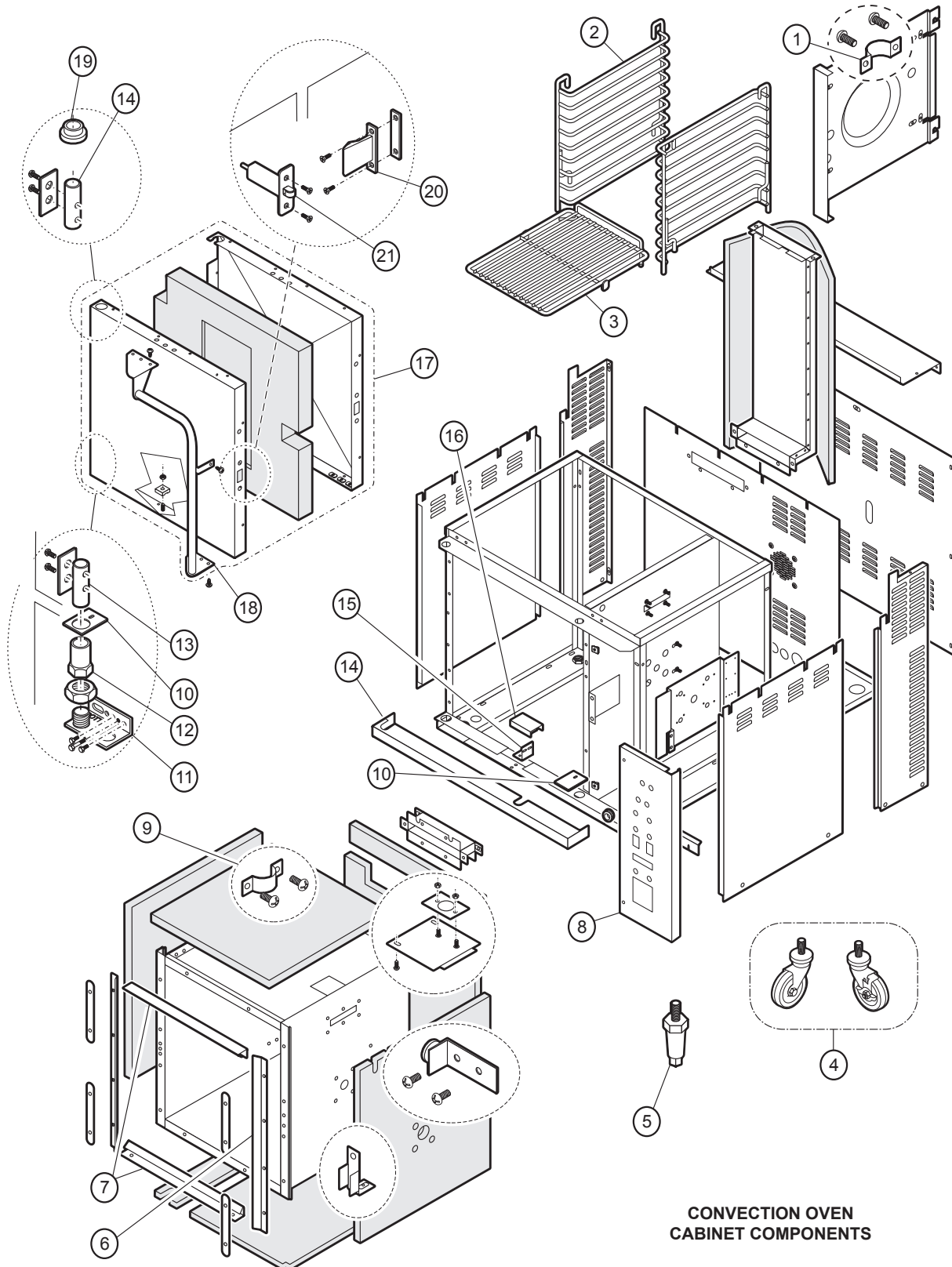
EXPLODED VIEW & PARTS LIST

CONVECTION OVEN ELECTRICAL COMPONENTS

Model: WVOC2 Convection Oven Electrical Components			
Fig No.	Part No	Description	Applications
1	2N-43872UL	ELEM 208V 2500W 4" GAP	208V
	2N-43783UL	ELEM 240V 2800W 4" GAP	240V
2	2N-43866UL	ELEM 208V 2500W 2.5" GAP	208V
	2N-43800UL	ELEM 240V 2800W 2.5" GAP	240V
3	F6-43836	COVER GASKET ELEM INNER	
4	2I-43834	GASKET ELEM M4200	
5	2T-45180	THRMO SNAP DISC M4200/OC1	
6	2J-304712	PROBE TEMP OC-1	
7	2E-34769	FUSEHLDR 10A, 240V	
8	2E-34768	FUSE, SC-10/10A@E300V	
9	2E-306967B	RLY ESAFE, I/O 24/240V-LV	208/240V
	2E-306967A	RELAY ESAFE II I/O 24V/240V	380-415V
10	2K-31040	BUSHING 7/8" O.D.	
11	2U-44687	FAN COOLING M4200	
12	2E-307328	RELAY -3PST, I/O 240/30A	
13	2E-302789	CONTACTOR 50A 3 PHASE 208/240V	
14	2V-300933	BRKT CAPACITOR HOLDING	
15	WS-69823	CAPACITOR MTR 440V@6mFD	
16	WS-63932	MOTOR 2SP 1/4HP 208/240V	
17	2E-43880	RLY 208/240 DPDT M4200	
18	WS-50131	TERM BLK KIT 3 POLE 85AMP	
19	2C-41974	NUT 8-32 HEX 7/8 LONG ALU	
20	WS-65846	CNTRLLR	w/MERC Relay
	2J-307348	CONTROLLER 400F,	w/E-SAFE RELAY
21	2E-30562	SWITCH INFINITE 240V A	
22	WS-504713	CONTROLLER BOARD TIME/TEMP	
23	M3-303252	GASKET CLOSE CELL OVEN POTEN	
24	2R-47439	KNOB	
25	2E-45657	SWITCH SPDT	
26	2E-43738	BOOT ROCKER SWITCH WB-2B	
27	2E-45651	SWITCH DPDT BLACK 250V	
28	2J-31157	LIGHT SIGNAL RED	
29	2R-300356	KNOB 150-550 DEG °F	
30	2J-40877	LIGHT SIGNAL WHITE 250V	
31	2R-45653	KNOB CONTROL 2.25 OD	
32	2M-304724	DECAL OC2HG CTRL PNL ZYTR	
33	M3-304688	PANEL CONTROL	
34	M3-49655	PANEL CONTROL ASSY OC-2HG	
35	F6-43787	BRKT SWITCH PROXIMITY	
36	F6-45239	PROXIMITY SWITCH ASSY	
37	2U-43797	WHEEL BLOWER M4200	

EXPLODED VIEW & PARTS LIST

CONVECTION OVEN ELECTRICAL COMPONENTS



CONVECTION OVEN CABINET COMPONENTS

505 p/n 2M-304963 Owners Manual WVOC-2 Combination Cook Center

IL1966, PL505

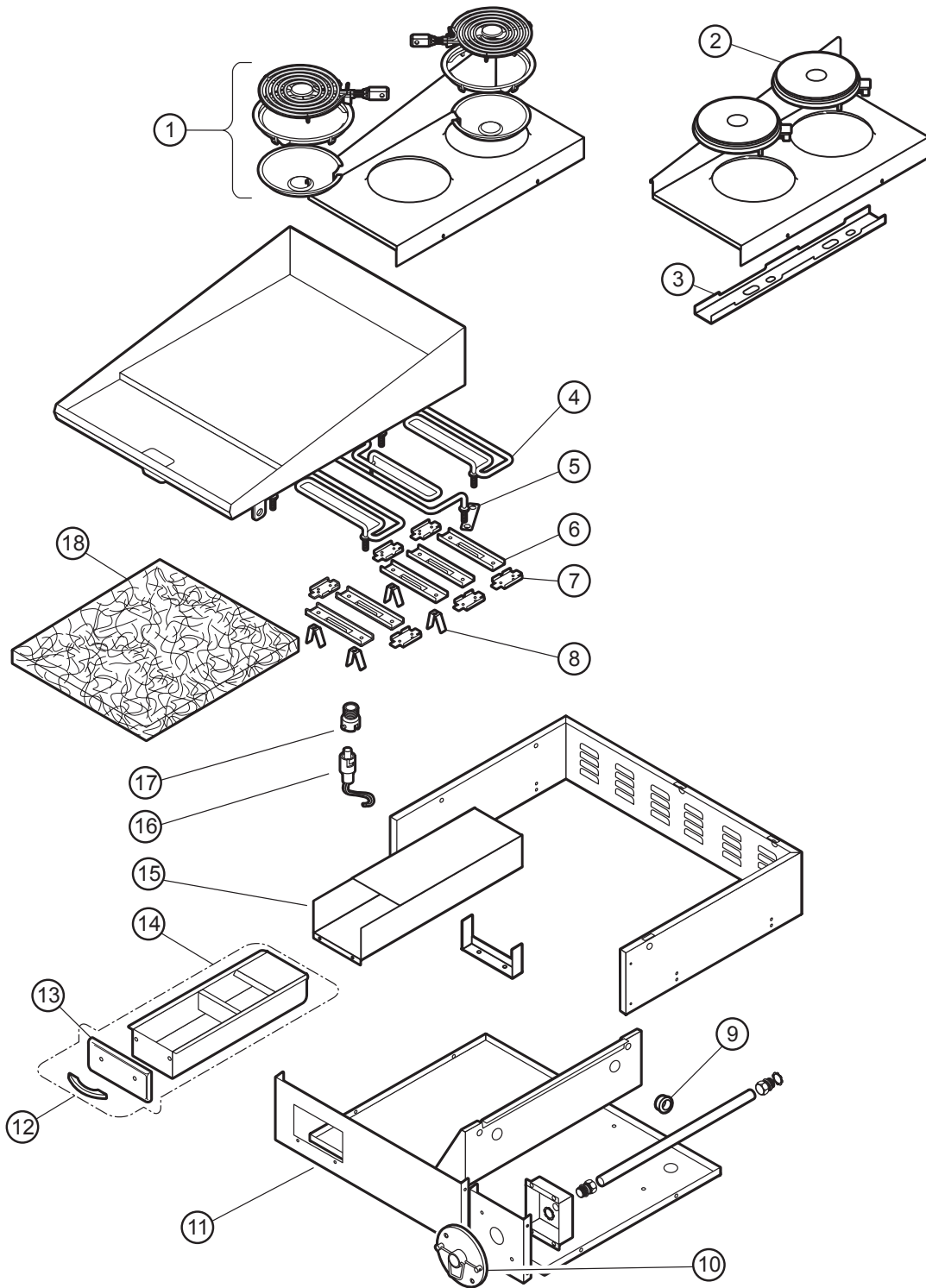
EXPLODED VIEW & PARTS LIST

CONVECTION OVEN ELECTRICAL COMPONENTS

Model: WVOC2 Convection Oven Cabinet Components		
Fig No.	Part No	Description
1	F6-43889	CLIP SUPPORT RACK M4200
2	2B-43785	SUPPORT RACK OVEN M4200
3	2B-50200-34	RACK HALF SIZE OVENS
4	WS-21372	CASTER SWVL W/BRAKE M4200 (SET OF 2)
	WS-21330	CASTER SET OF 4, 2-SWVL, 2-SWVL w/BRK
5	2A-45598	LEG ADJUST 6IN SS OC-1
6	F6-46313	GASKET DOOR SIDE M4200
7	F6-46314	GASKET DOOR TOP BTM
8	NLA	
9	F6-43889	CLIP SUPPORT RACK M4200
10	F6-43899	PLATE DOOR PIVOT M4200
11	F6-43896	HINGE BOT ASSY DOOR M4200
12	2A-43900	SLEEVE HINGE DOOR M4200
13	2A-305610	PIN HINGE DOOR OVENS
14	F6-43804	TRIM FR LOWER M4200
15	F6-43787	BRKT SWITCH PROXIMITY M4200
16	F6-45647	SHIELD PROX SWITCH ASSY
17	F6-504444	DOOR ASSY M4200 3SV
18	2R-305612	HANDLE ASSY M4200-3SV
19	2K-305619	BUSHING UPPER DOOR HINGE
20	2C-305616	STRIKER LATCH M4200-3SV
21	2C-305615	LATCH ASSY M4200-3S

EXPLODED VIEW & PARTS LIST

COOKTOP CABINET & ELECTRICAL COMPONENTS



COOKTOP CABINET &
ELECTRICAL COMPONENTS

IL1967b, PL505

WIRING DIAGRAM

COOKTOP CABINET & ELECTRICAL COMPONENTS

Model: WVOC2 Cooktop Components		
Fig No.	Part No	Description
1	WS-50293	ELEMENT ASSY KIT 240V @ 2600W
2	WS-503973	ELM HPLT, UPGRADE-FUSED WIRE
3	DD-501451	BRKT SOLID ELEM HOLD DOWN
4	2N-30496UL	ELEMENT 240V 2250W
5	2E-32054	JUMPER, ELEMENT MEDIUM
6	G7-31968	CLAMP ELEM CTR SMALL GRD
7	G7-31969	CLAMP ELEM END SMALL GRID
8	G7-33474	CLIP TIE DOWN INSUL GRID
9	2K-31040	BUSHING 7/8" O.D.
10	2O-308131	REMOTE PULL STATION RED
11	M3-302730	PANEL FRONT RANGE
12	2R-38668	HANDLE GREASE DRWR GRIDDLE
13	G7-Z12047	PANEL FRONT - GREASE DRW
14	WS-501774	GREASE CAND ASSY OC2HG
15	G7-WL0622	GREASE TRAY ASSY.
16	WS-69623	PROBE W/ 1/4 ST
17	2K-48746	ADAPTER BAYONET 3/8-24
18	WS-57407	8SF INSULATION-OVERSIZED