

# Winston CVAP Holding/Proofing Cabinet *(Non surface-mounted controls)* Parts Identification Manual



2345 Carton Drive  
Louisville, KY 40299 USA  
(800) 234-5286  
(502) 495-5400

# WINSTON CVAP BRAND HOLDING/PROOFING CABINET

## Parts Identification

Photo Reference .....	1 - 5
Parts Descriptions & Order Numbers .....	6 - 8
Wiring Schematic .....	9

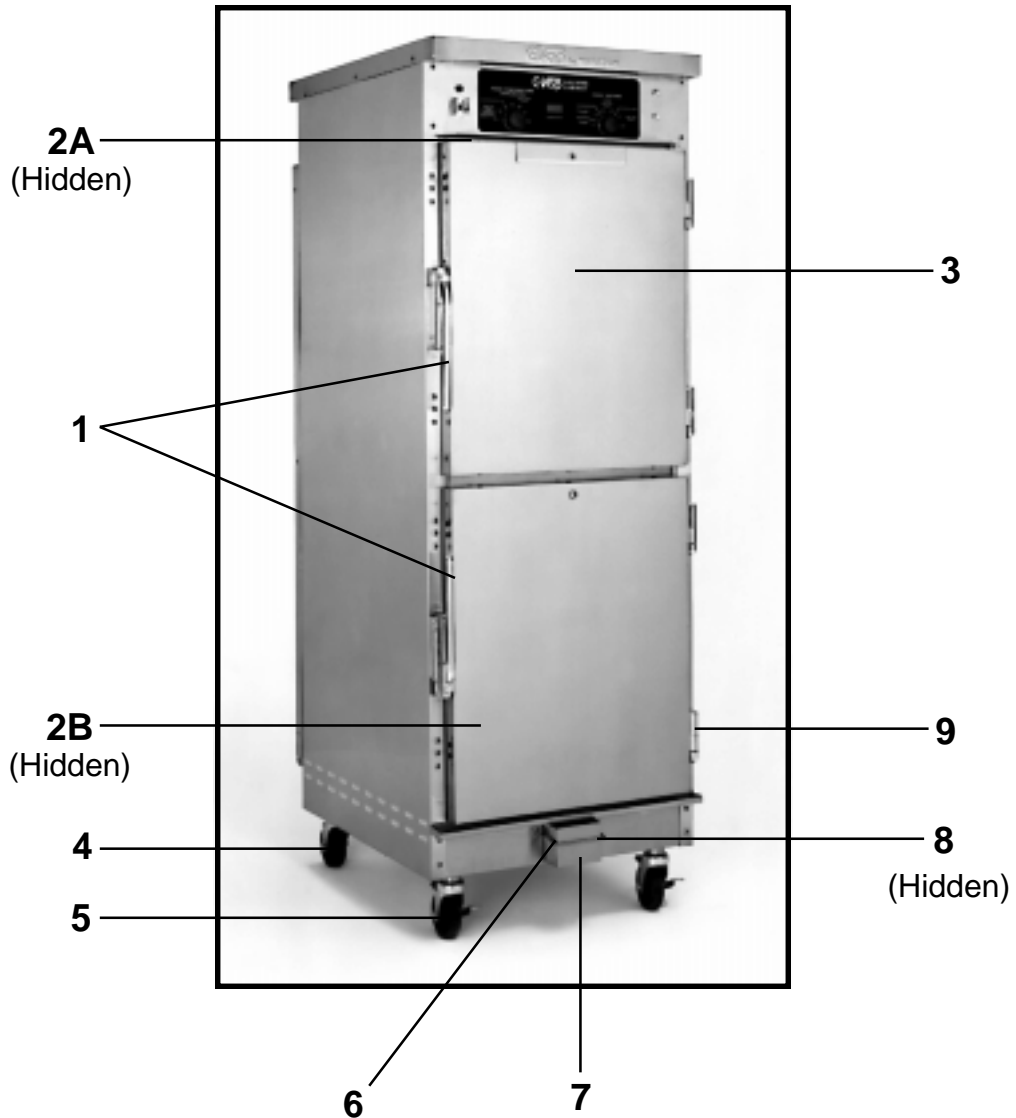
### How To Use This Manual

Use Photo Reference (pages 1 - 5) to identify parts. Match Photo Reference numbers with Parts Descriptions and Order Numbers (pages 6 - 8). To use Wiring Diagrams (Appendixes A - B), match CVAP Model Number to corresponding Appendix (page 9).

# WINSTON CVAP BRAND HOLDING/PROOFING CABINET

## Parts Identification

**NOTE:** See page 6 - 7  
for Parts Descriptions  
and Order Numbers

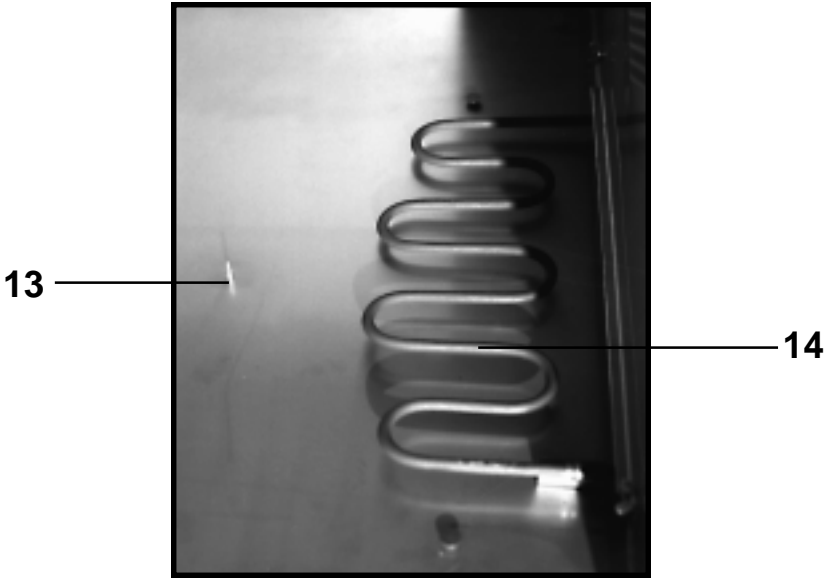
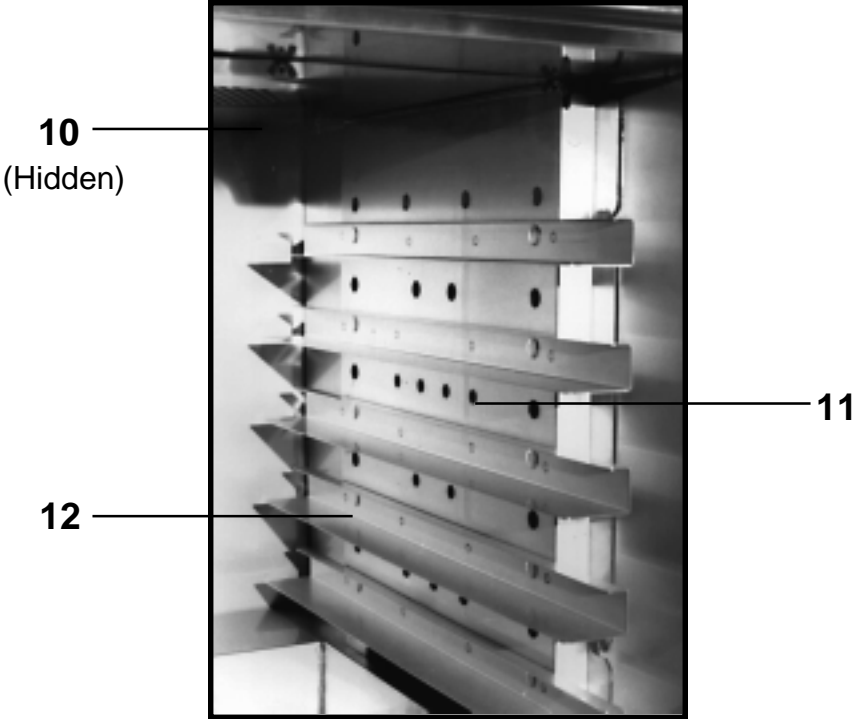


To order parts, contact your Winston representative or call the International office:  
**Winston Products Co.**  
**(800) 234-5286 USA & Canada/USA TEL: (502) 495-5400/USA FAX: (502) 495-5458**

# WINSTON CVAP BRAND HOLDING/PROOFING CABINET

## Parts Identification

**NOTE:** See page 5  
for Parts Descriptions  
and Order Numbers

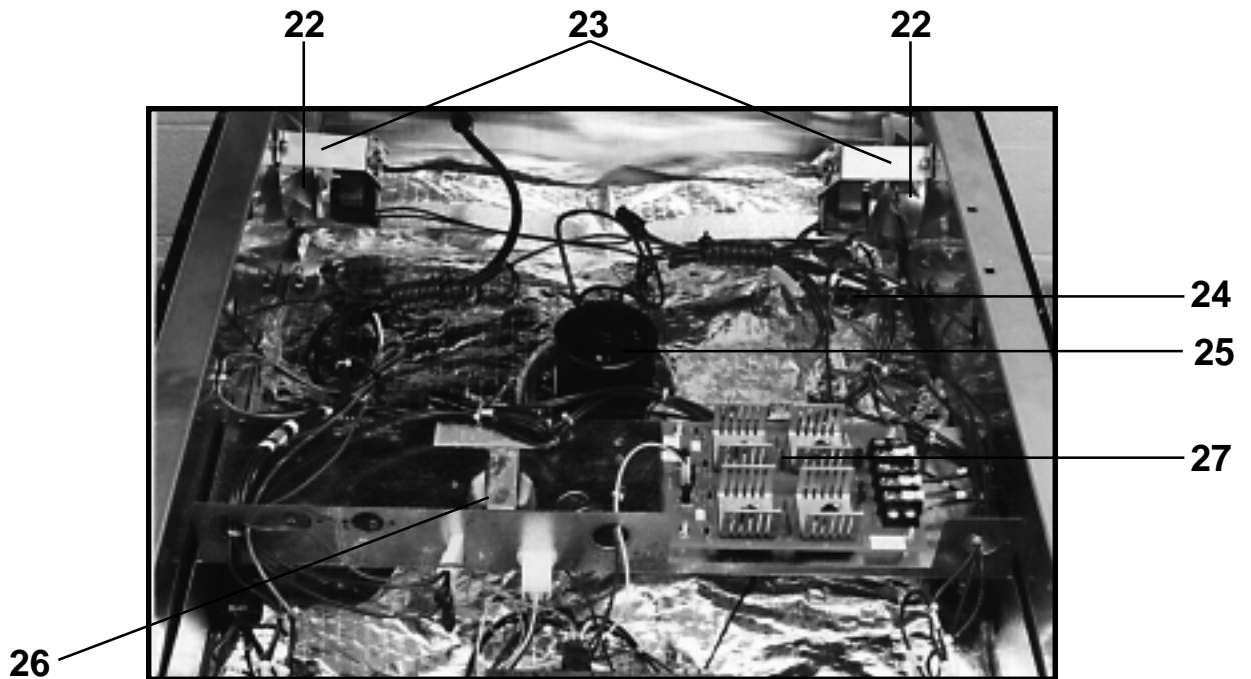
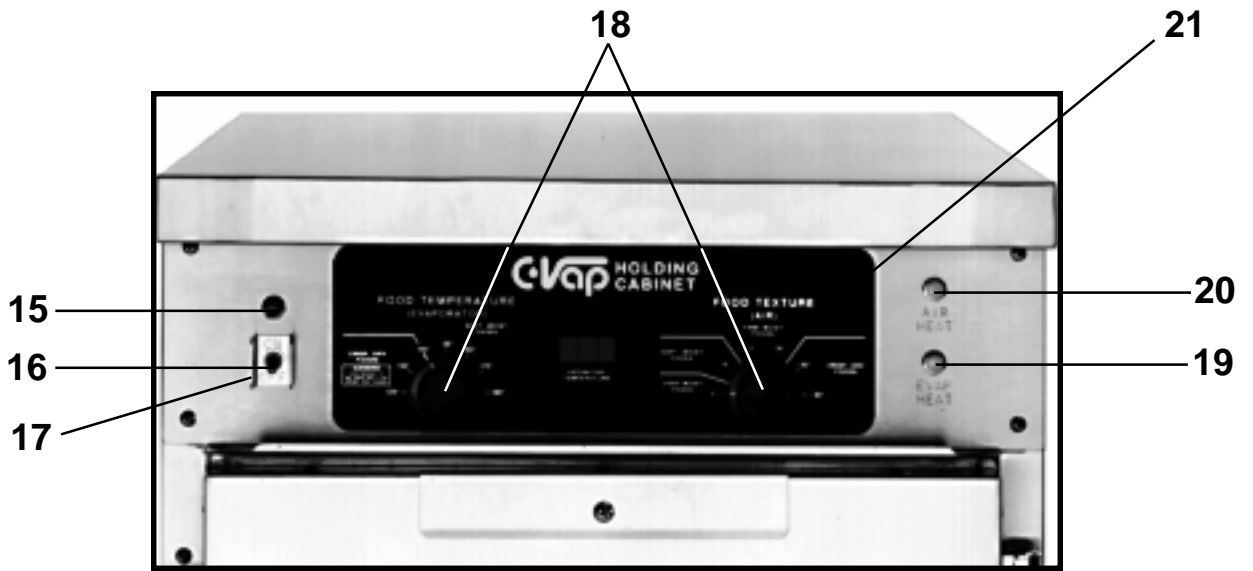


To order parts, contact your Winston representative or call the International office:  
**Winston Products Co.**  
**(800) 234-5286 USA & Canada/USA TEL: (502) 495-5400/USA FAX: (502) 495-5458**

# WINSTON CVAP BRAND HOLDING/PROOFING CABINET

## Parts Identification

**NOTE:** See page 6 - 7  
for Parts Descriptions  
and Order Numbers

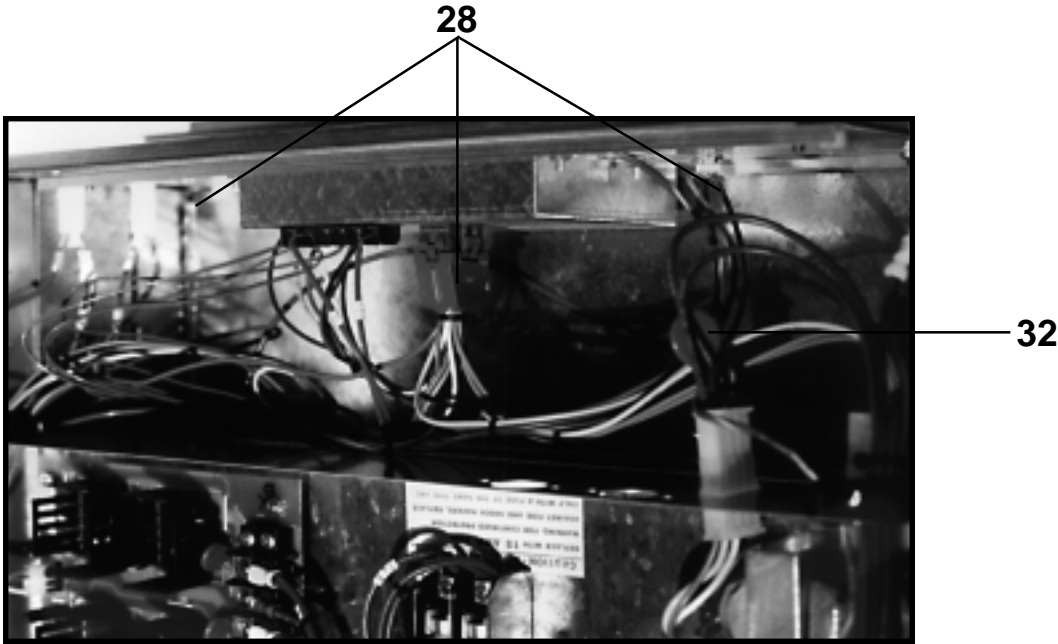


To order parts, contact your Winston representative or call the International office:  
**Winston Products Co.**  
**(800) 234-5286 USA & Canada/USA TEL: (502) 495-5400/USA FAX: (502) 495-5458**

# WINSTON CVAP BRAND HOLDING/PROOFING CABINET

## Parts Identification

**NOTE:** See page 6 - 7  
for Parts Descriptions  
and Order Numbers



To order parts, contact your Winston representative or call the International office:  
**Winston Products Co.**  
**(800) 234-5286 USA & Canada/USA TEL: (502) 495-5400/USA FAX: (502) 495-5458**

# WINSTON CVAP BRAND HOLDING/PROOFING CABINET

## Parts Identification

**NOTE:** See page 6 - 7  
for Parts Descriptions  
and Order Numbers

33



34  
(Hidden)



35

36

To order parts, contact your Winston representative or call the International office:  
**Winston Products Co.**  
**(800) 234-5286 USA & Canada/USA TEL: (502) 495-5400/USA FAX: (502) 495-5458**

# WINSTON CVAP BRAND HOLDING/PROOFING CABINET

## Parts Identification

Photo Reference Number	Part Description	Order Number
1	<b>Door Handle - Black Lexan</b> <b>Door Handle - Stainless Steel</b>	<b>PS2117</b> <b>PS1774</b>
2A	<b>Door Gasket - Top (HA4019 &amp; HA4519)</b> <b>Door Gasket - Top (HA4522)</b>	<b>PS1442</b> <b>PS2151</b>
2B	<b>Door Gasket - Bottom (HA4019 &amp; HA4519)</b> <b>Door Gasket - Bottom (HA4522)</b> <b>Door Gasket - (HA4008 &amp; HA4508)</b> <b>Door Gasket - (HA4003 &amp; HA4503)</b> <b>Door Gasket - (HA4509)</b>	<b>PS1446</b> <b>PS2150</b> <b>PS1446</b> <b>PS1440</b> <b>PS2127</b>
3	<b>Door Assembly</b>	<i>Ref. Only</i>
4	<b>Caster - Rear, Non-Locking</b> <i>(For all units except Under Counter Model)</i>	<b>PS2147</b>
5	<b>Caster - Front, Locking</b> <i>(For all units except Under Counter Model)</i>	<b>PS2146</b>
6	<b>Drip Cup Bail</b>	<b>PS2054</b>
7	<b>Drip Cup</b>	<b>PS2182</b>
8	<b>Drip Cup O-ring</b>	<b>PS1280/3</b>
9	<b>Door Hinge (Kit accommodates one door)</b>	<b>PS2116</b>
10	<b>Circulating Fan Blade</b>	<b>PS2148</b>
11	<b>Flue Assembly/Shelf Rack Assembly</b>	<i>Ref. Only</i>

To order parts, contact your Winston representative or call the International office:

**Winston Products Co.**

**(800) 234-5286 USA & Canada/USA TEL: (502) 495-5400/USA FAX: (502) 495-5458**



# WINSTON CVAP BRAND HOLDING/PROOFING CABINET

## Parts Identification

Photo Reference Number	Part Description	Order Number
12	Rail	<i>Ref. Only</i>
13	Air Thermocouple Probe	PS1643
14	Air Heater (120 Volt) Air Heater (240 Volt)	PS2067 PS2099
15	Power On Lamp (120 Volt) Power On Lamp (240 Volt)	PS1103/3 PS1012/3
16	On/Off Switch	PS1529
17	On/Off Switch Guard	PS1086
18	Control Knobs	PS1250
19	Evaporator Heat Lamp (120 Volt) Evaporator Heat Lamp (240 Volt)	PS1103/3 PS1012/3
20	Air Heat Lamp (120 Volt) Air Heat Lamp (240 Volt)	PS1103/3 PS1012/3
21	Overlay Panel	<i>Ref. Only</i>
22	Cooling Fan Blades	PS2083
23	Cooling Fans Motor (120 Volt) Cooling Fans Motor (240 Volt)	PS2066 PS2098
24	Hi Limit Thermostat	PS2199

To order parts, contact your Winston representative or call the International office:

**Winston Products Co.**

(800) 234-5286 USA & Canada/USA TEL: (502) 495-5400/USA FAX: (502) 495-5458

# WINSTON CVAP BRAND HOLDING/PROOFING CABINET

## Parts Identification

Photo Reference Number	Part Description	Order Number
25	Circulating Fan Motor (120 Volt) Circulating Fan Motor (240 Volt)	PS2051 PS2100
26	Transformer (120 Volt) Transformer (240 Volt)	PS1644 PS1687
27	Power Board	PS1639
28	Wiring Sub Harness with Potentiometer	PS1958
29	Differential Control	PS2001
30	Air Thermocouple	PS1643
31	Water Thermocouple	PS1642
32	Varistor (150 Volt) Varistor (275 Volt)	PS1234/3 PS1267
33	Cabinet Bottom Panel	<i>Ref. Only</i>
34	Water Thermocouple	PS1642
35	Water Heater (120 Volt) Water Heater (240 Volt)	PS2068 PS1711
36	Drain Pipe (HA4003 & HA4503) Drain Pipe (All other HA models)	PS1630 PS1629
<div style="border: 1px solid black; padding: 5px; width: fit-content; margin: 0 auto;"> <p><b>NOTE:</b> See pages 1 - 5 for Photo Reference</p> </div>		

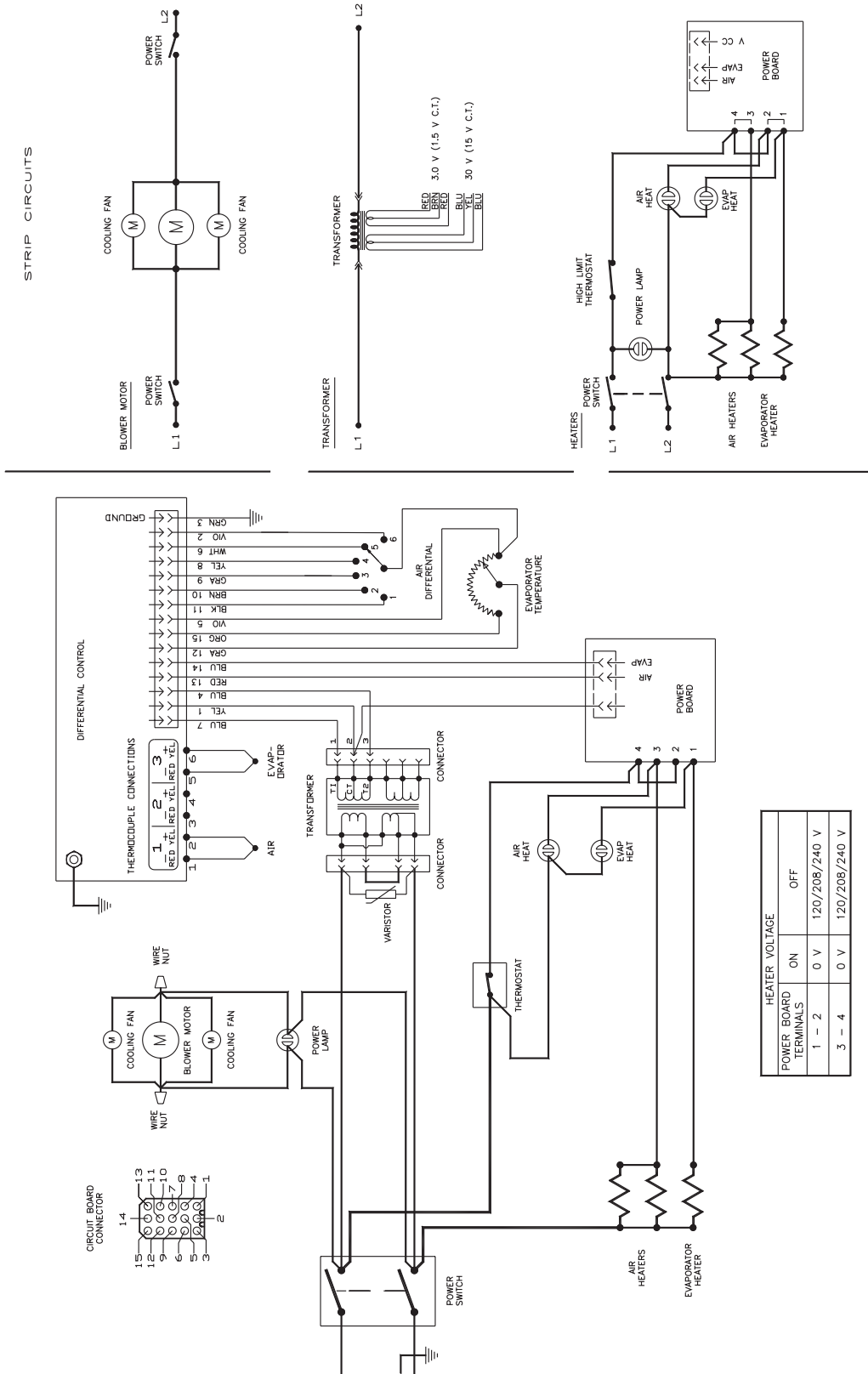
To order parts, contact your Winston representative or call the International office:

**Winston Products Co.**

**(800) 234-5286 USA & Canada/USA TEL: (502) 495-5400/USA FAX: (502) 495-5458**

# WINSTON CVAP BRAND HOLDING/PROOFING CABINET

## Wiring Schematic



To order parts, contact your Winston representative or call the International office:

**Winston Products Co.**

**(800) 234-5286 USA & Canada/USA TEL: (502) 495-5400/USA FAX: (502) 495-5458**